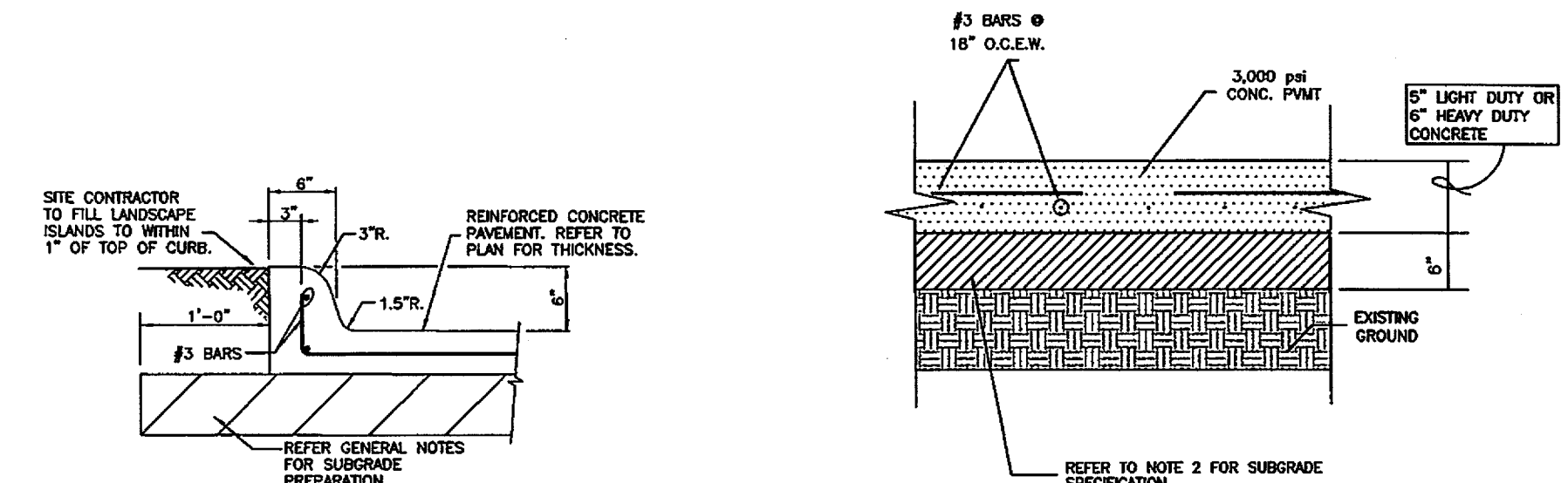
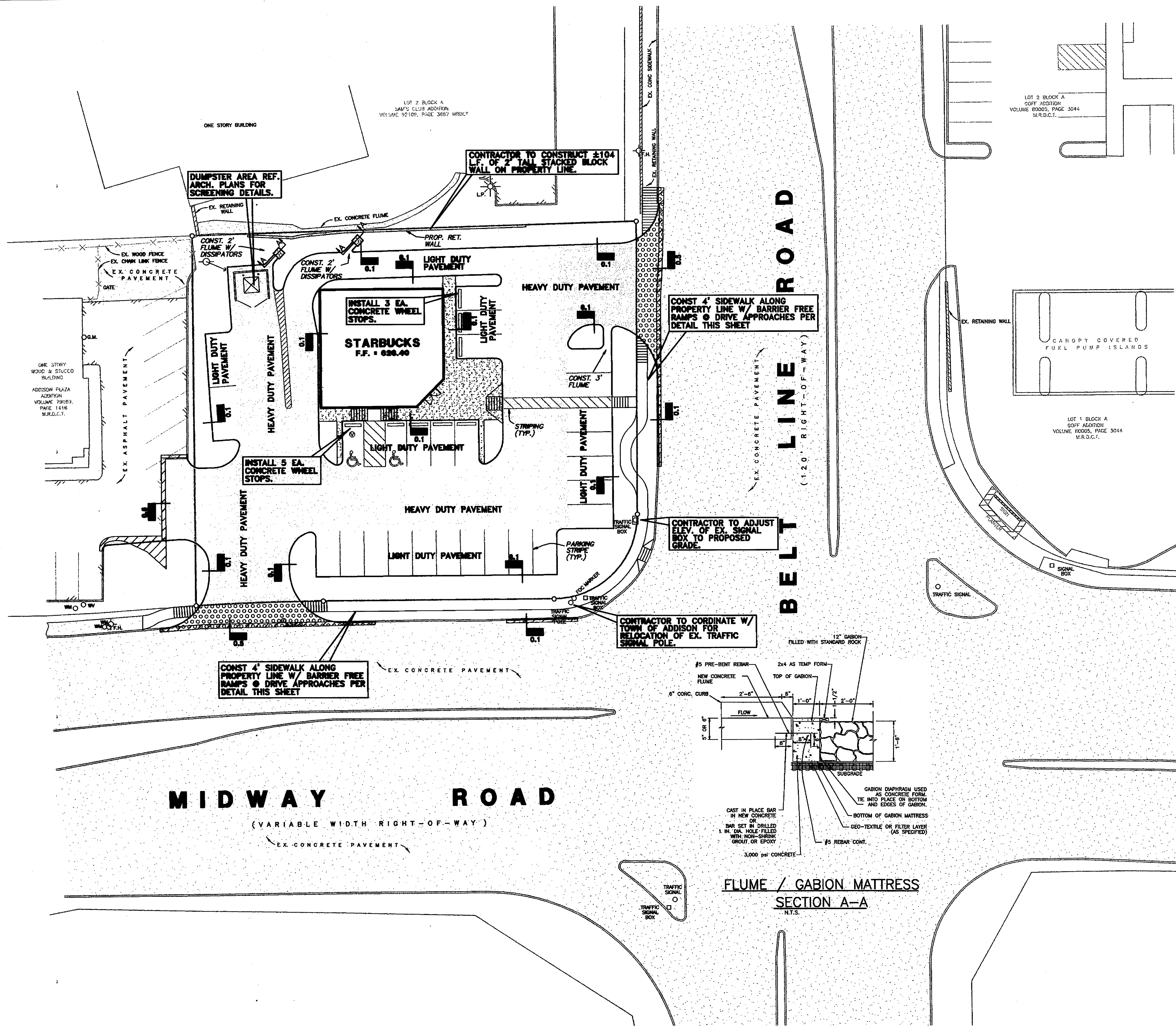
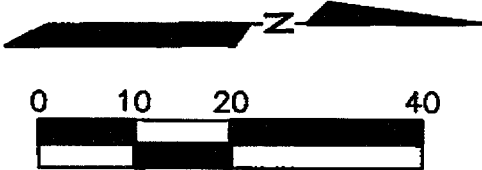


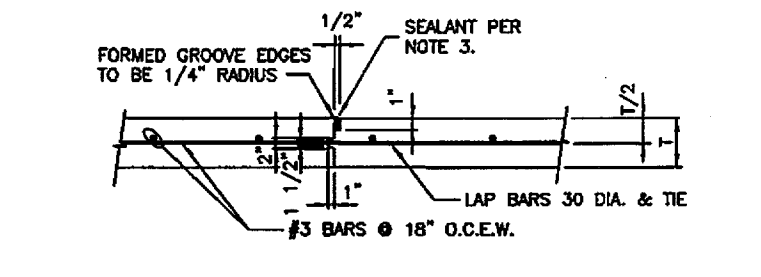
PAVING GENERAL NOTES:

- ALL ON SITE CONCRETE PAVING SHALL BE OF THE THICKNESS SHOWN ON THE PLAN AT 28 DAYS AND HAVING A ONE INCH (1") TO FOUR INCH (4") SLUMP AND REINFORCED WITH #3 BARS @ 18" O.C.E.W. REINFORCING SHALL BE SUPPORTED BY CHAIRS AND SPACED AT 16 S.F. MAXIMUM INTERVAL. USE OF FLY ASH IS PROHIBITED.
- SUBGRADE SHALL BE SCARIFIED TO A DEPTH OF 6" AND UNIFORMLY COMPACTED TO A MINIMUM OF 95 PERCENT (95%) STANDARD PROCTOR AT OR ABOVE OPTIMUM MOISTURE. REFER TO REPORT BY REED ENGINEERING GROUP DATED JUNE 2005, PROJECT NUMBER 12248.
- SEALANT MATERIAL TO BE TWO PART SELF LEVELING POLYURETHANE SEALANT (SONOBORN SL-2). SPECIFICATIONS TO BE SUBMITTED TO THE ENGINEER PRIOR TO INSTALLATION.
- BREAKOUTS FOR REMOVAL OF EXISTING PAVEMENT AND CURBS SHALL BE MADE BY FULL DEPTH SAW CUT WHEN ADJACENT TO PROPOSED PAVING AND/OR CURBS.
- PROPOSED CONCRETE CURBS SHALL MATCH ELEVATIONS OF EXISTING CURB.
- CONCRETE TO BE BROOM FINISHED AND CURED FOR A MINIMUM OF 72 HOURS.
- ALL PARKING SPACES SHOWN ON PROPOSED CONSTRUCTION SHALL BE MARKED WITH 4 INCH (4") WIDE YELLOW PAINTED PAVEMENT STRIPING. PAINT SHALL BE SHERWIN WILLIAMS SERIES OR APPROVED ALTERNATE.
- ALL WORKMANSHIP AND MATERIAL SHALL BE IN ACCORDANCE WITH TOWN OF ADDISON STANDARD SPECIFICATIONS AND/OR SPECIFICATIONS ESTABLISHED BY THIS PROJECT. THE MOST STRINGENT SHALL APPLY.
- CONTRACTOR SHALL SUBMIT A JOINT SPACING PLAN TO THE ENGINEER PRIOR TO PLACEMENT OF CONCRETE PAVEMENT. CONTROL JOINTS SHALL BE INSTALLED AT A MAXIMUM SPACING OF 12' O.C.E.W. EXPANSION JOINTS SHALL BE INSTALLED AT A MAXIMUM SPACING OF NINETY FEET (90'). CONCRETE SHALL BE PLACED IN STRIPS NOT TO EXCEED 30 FEET (30') IN WIDTH OR PUMPED. LEVEL UP SAND COURSE WILL NOT BE ALLOWED.
- CONTRACTOR WILL PROVIDE A TWO (2) YEAR UNCONDITIONAL MAINTENANCE FREE WARRANTY ON PORTLAND CEMENT CONCRETE PAVEMENT.
- ALL ACCESSIBLE RAMPS TO BE CONSTRUCTED PER ADA STANDARDS.
- ALL FIRE LANES SHALL BE STRIPED IN ACCORDANCE WITH CITY STANDARDS AND SPECIFICATIONS.
- CONTRACTOR SHALL PROVIDE A DETAIL OF STACKED BLOCK WALL TO ENGINEER PRIOR TO PLACEMENT FOR APPROVAL.

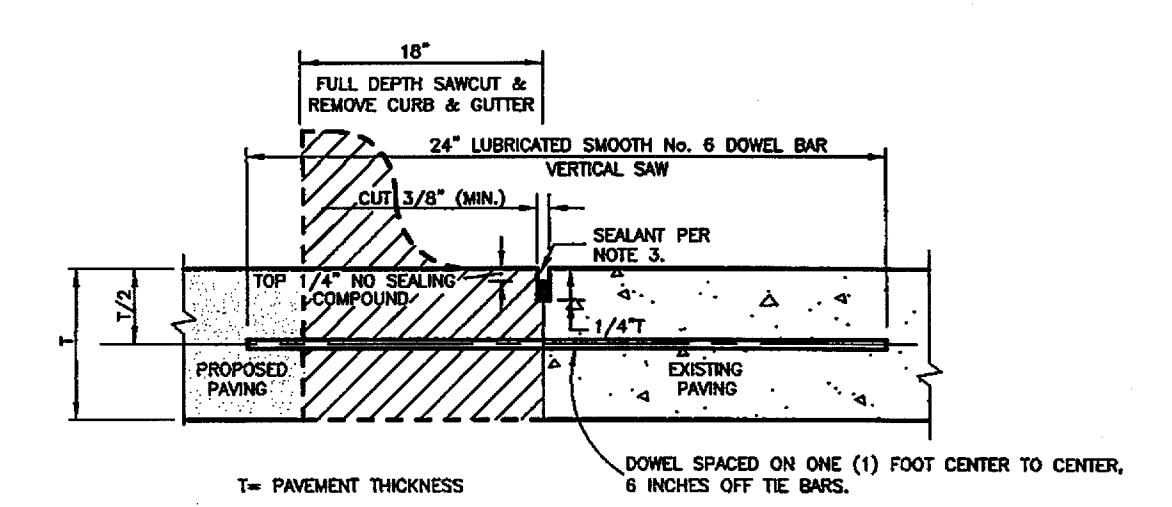


0.1 INTEGRAL CURB DETAIL
N.T.S.

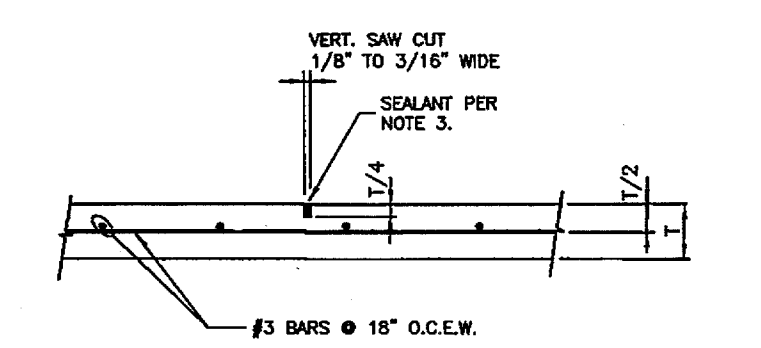
ON SITE LIGHT/HEAVY DUTY CONCRETE PAVEMENT SECTION
N.T.S.



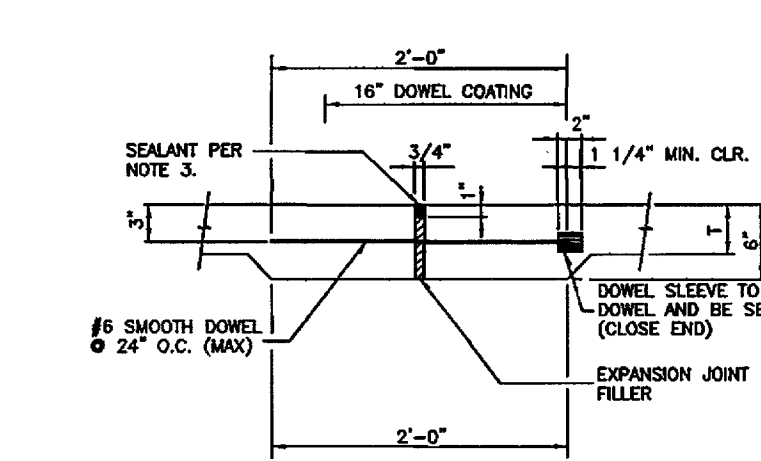
0.2 CONSTRUCTION JOINT
N.T.S.



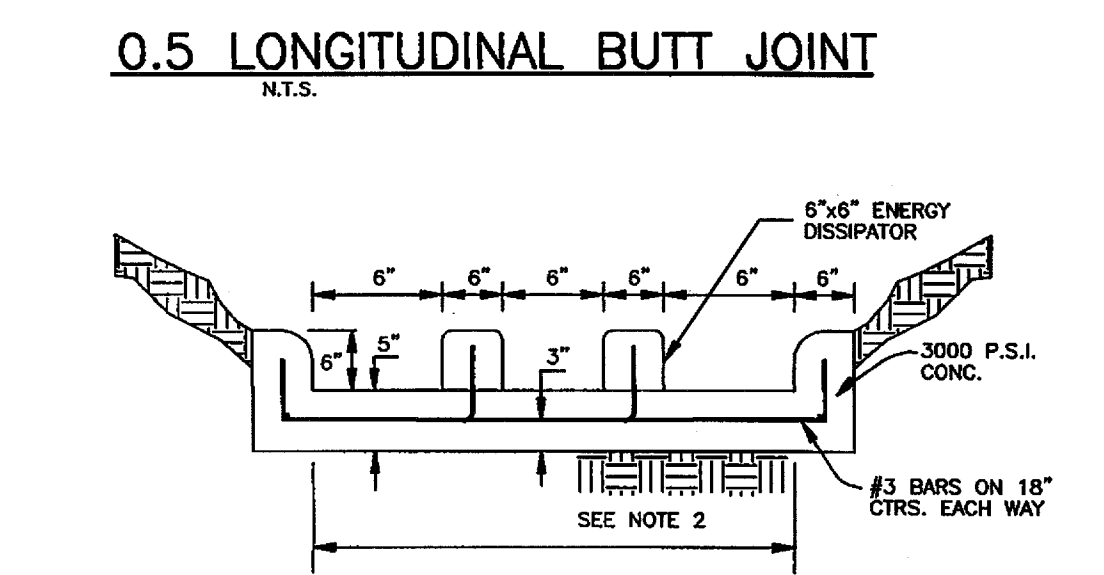
0.5 LONGITUDINAL BUTT JOINT
N.T.S.



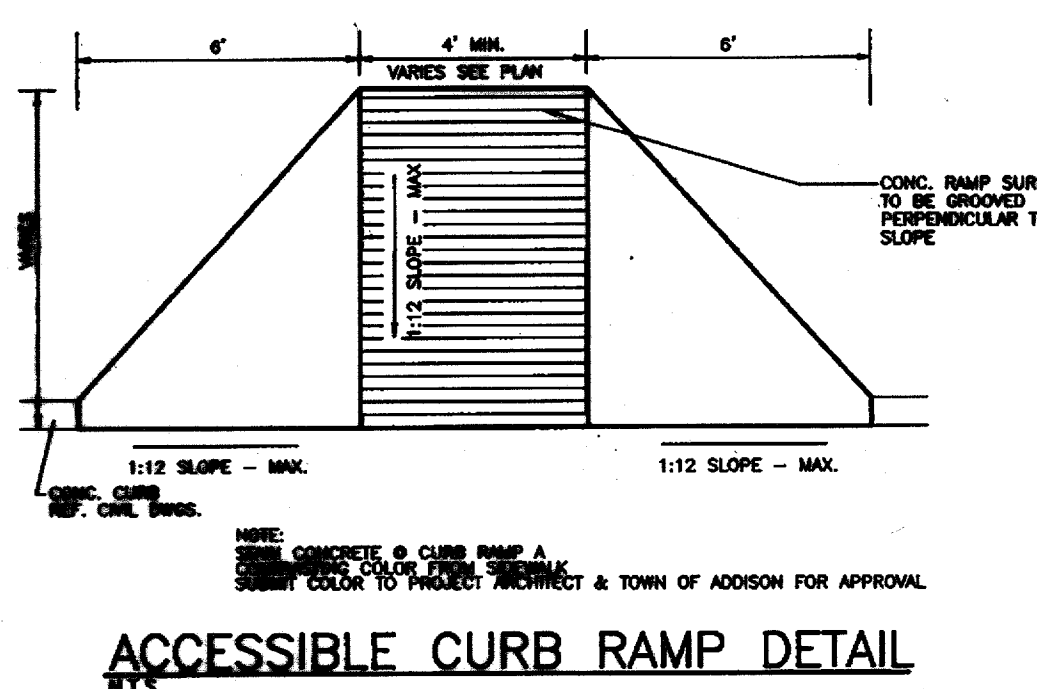
0.3 CONTROL JOINT
N.T.S.



0.4 EXPANSION JOINT DETAIL
N.T.S.



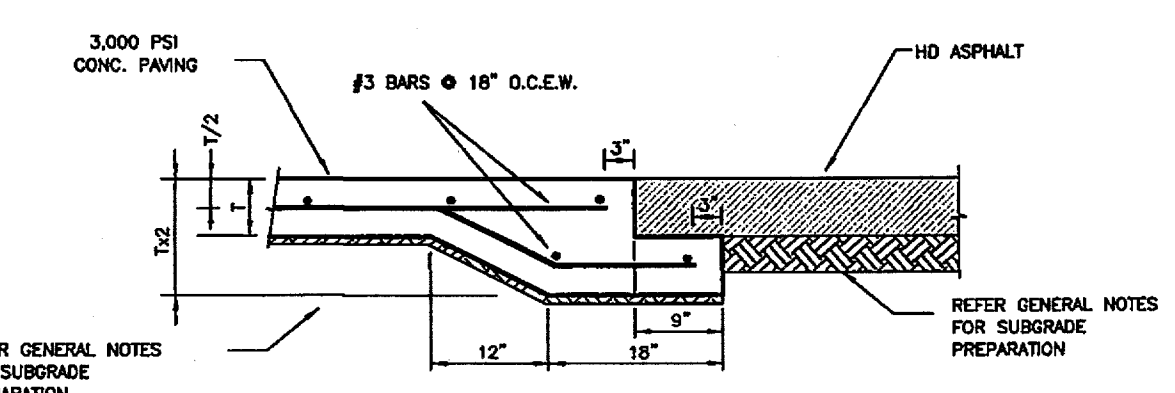
CONCRETE FLUME W/ DISSIPATORS
N.T.S.



ACCESSIBLE CURB RAMP DETAIL
N.T.S.

- LEGEND**
- F.H. FIRE HYDRANT
 - CHS ELED "X" SET
 - F.X. CHS ELED "X" FOUND
 - F.I.R. IRON ROD FOUND (SIZE AS NOTED)
 - S.I.R. IRON ROD SET (SIZE AS NOTED)
 - U.P. OVERHEAD UTILITY POLE W/ GUY
 - U.E. UNDERGROUND ELECTRIC OR TELEPHONE
 - L.P. LIGHT POLE (EX)
 - S.M. SANITARY SEWER MANHOLE (EX)
 - S.W. SAN. SWR. CLEAN OUT (EX)
 - G.V. GAS VALVE (EX)
 - W.V. WATER VALVE (EX)
 - T. TREE
 - C.I. PROP. CURB INLET
 - P.H. PAINTED HANDICAP SYMBOL
 - P.S. PAINTED STRIPING & ACCESS ROUTES
 - F.L. FIRE LANE

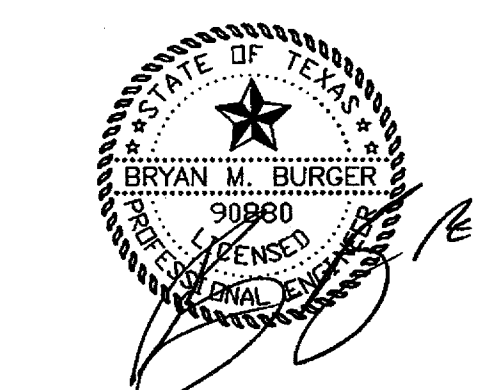
- LEGEND**
- 5"- 3,000 P.S.I. REINFORCED CONCRETE LIGHT DUTY PAVT
 - 6"- 3,000 P.S.I. REINFORCED CONCRETE HEAVY DUTY PAVT.
 - 8"- 3,000 P.S.I. REINFORCED CONCRETE W/ #4 BARS @ 18" O.C.E.W.
 - FULL DEPTH SAW CUT REMOVE EXIST. CURB



0.6 UNDERCUT HEADER DETAIL
N.T.S.

AS BUILT
DATE 3.17.06

THE SEAL APPEARING ON THIS DOCUMENT WAS AUTHORIZED BY BRYAN M. BURGER, P.E. 90880 ON 7/22/05



| REV. | DATE | REMARKS |
|------|------|---------|
| | | |
| | | |

PAVING PLAN

STARBUCKS -- ADDISON PLAZA ADDITION
S.W.C. BELT LINE RD. & MIDWAY RD.
THE TOWN OF ADDISON, TEXAS

LAWRENCE A. CATES & ASSOC., LLP CONSULTING ENGINEERS
14800 QUORUM DRIVE, SUITE 200 (972) 385-2272 DALLAS, TEXAS

| DESIGN | DRAWN | DATE | SCALE | NOTES | FILE | NO. |
|--------|-------|------|--------|-------|--------------|-----|
| BMB | JAL | 6/04 | 1"=20' | D.P. | 23113 PAVING | C-5 |