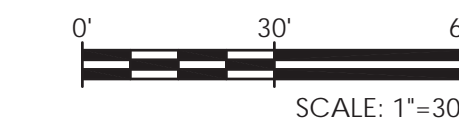
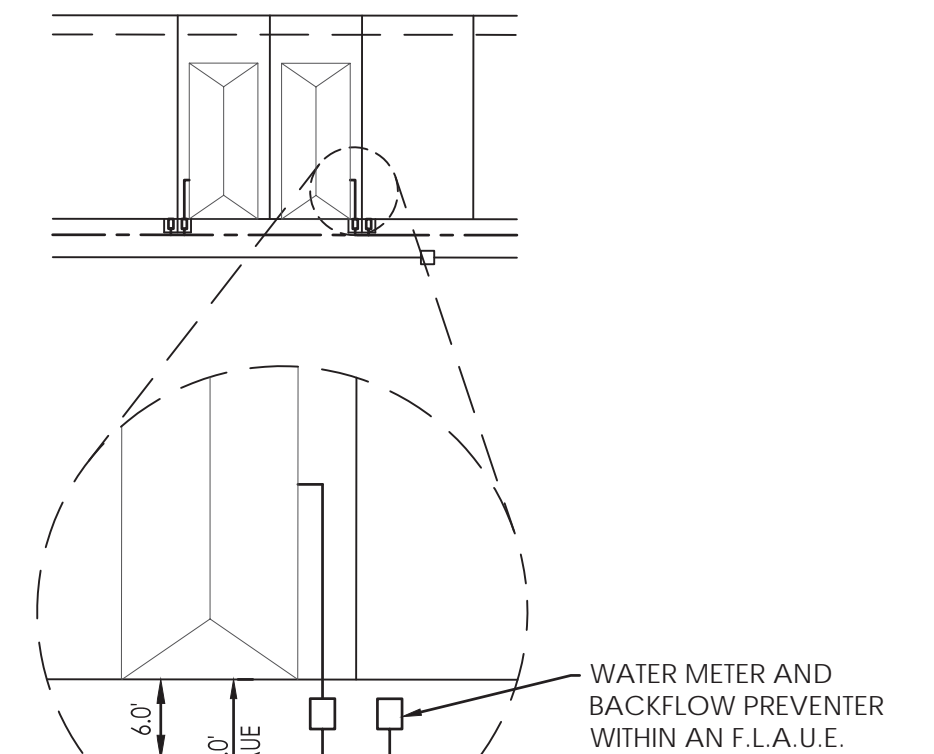


4180 BELTLINE RD
TRITON ADDISON BELTLINE LLC.
SAM'S CLUB
BLOCK A, LOT 2
COMMERCIAL IMPROVEMENTS PLANNED DEVELOPMENT
SUITE A: SNUFFERS RESTAURANT & BAR
SUITE B: TAQUERIA LA VENTANA

BUILDING CONNECT MUST BE TO
SANITARY SEWER LATERAL AND
NOT THE CLEANOUT RISER

SANITARY LATERAL
SLOPE VARIES
(MIN 2 FPS, MAX 10 FPS)
(MIN 1.04%, MAX 20%)

TYP. SANITARY SEWER LATERAL DETAIL
SCALE: N.T.S.



TYP. WATER METER DETAIL
SCALE: N.T.S.

- METER BOX TO BE PLACED OUTSIDE OF WHEEL PATH AND NOT CENTERED IN DRIVEWAYS.
- WATER METERS SHALL BE MUELLER SYSTEMS MODEL RFM 1-1/2" RESIDENTIAL FIRE METER INSTALLED WITHIN THE 5'X5' W.M.E. IN AN OLDCASTLE B1017 TRAFFIC RATED METER BOX.
- BACKFLOW PREVENTERS SHALL BE AMES SERIES LF2000B 1-1/2" DOUBLE CHECK VALVE ASSEMBLY INSTALLED A MINIMUM OF 18" DOWNSTREAM OF THE WATER METER WITHIN THE 5'X5' W.M.E. IN A OLDCASTLE B1324 TRAFFIC RATED BOX.

UTILITY LEGEND

- PUBLIC SANITARY SEWER AND MANHOLE
- SANITARY SEWER AND MANHOLE
- SANITARY SEWER AND CLEANOUT
- EXISTING SANITARY SEWER AND MANHOLE
- PROPOSED FIRE HYDRANT ASSEMBLY
- PROPOSED WATERLINE WITH GATE VALVE AND BOX WITH 10' W.L.E.
- EXISTING WATERLINE WITH GATE VALVE AND BOX
- PUBLIC STORM SEWER WITH MANHOLE AND INLETS
- PROPOSED PRIVATE STORM SEWER
- EXISTING STORM SEWER AND MANHOLE
- EXISTING INLET
- PROPOSED TREE WELL
- PUBLIC R.O.W. FIRE LANE ACCESS
- CONCRETE PRIVATE DRIVE-24.00' FIRE LANE ACCESS AND UTILITY EASEMENT
- 2x6' TRUNCATED DOME PANEL
- F.L.A.U.E. 24" (MIN.) VARIABLE WIDTH FIRE LANE AND UTILITY EASEMENT



SAWYER ENGINEERING, LLC
TXPE FIRM NUMBER F-9171

NO.	REVISION	BY	DATE

ADDISON
TOWN OF ADDISON
DALLAS COUNTY, TEXAS

IMPROVEMENT PLANS
ADDISON GROVE

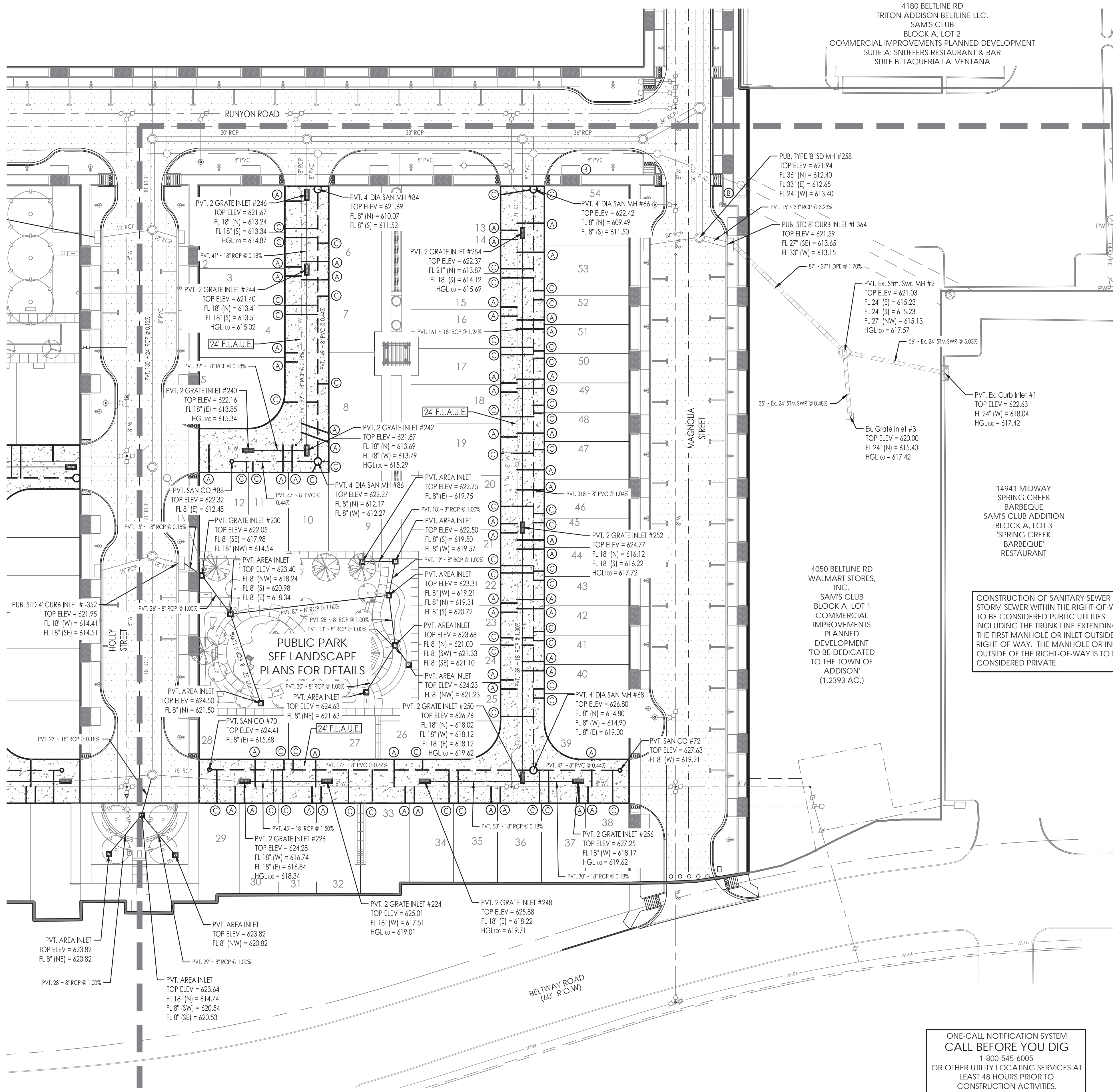
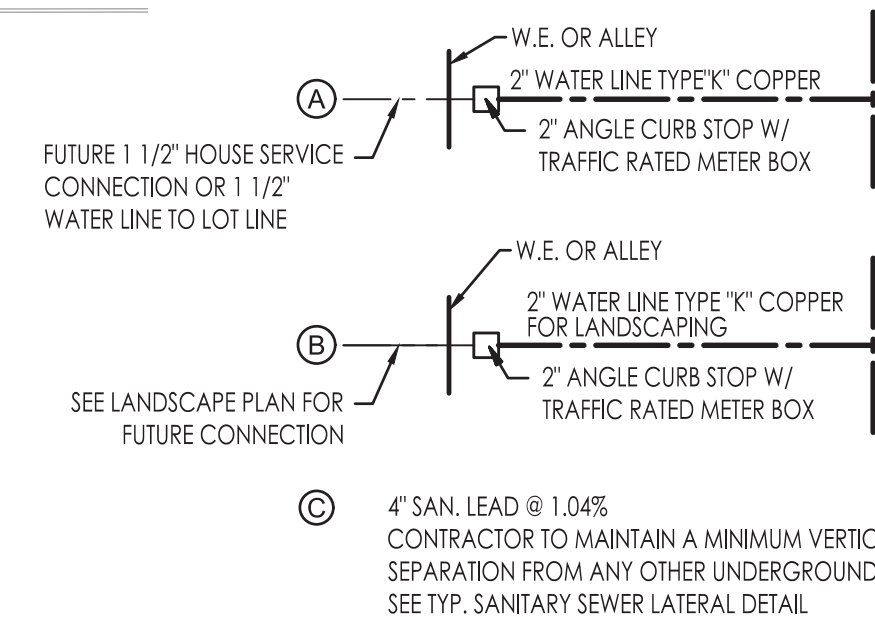
PRIVATE UTILITY LAYOUT BLOCK D

SAWYER ENGINEERING, LLC TXPE: F-9171	1520 OLIVER STREET HOUSTON, TEXAS 77007 (832) 553-5948				
PROJECT	DESIGN	DRAWN	DATE	FILE	SHEET
	CDP	JDS	MAY 2017		53

ONE-CALL NOTIFICATION SYSTEM
CALL BEFORE YOU DIG
1-800-545-6005
OR OTHER UTILITY LOCATING SERVICES AT
LEAST 48 HOURS PRIOR TO
CONSTRUCTION ACTIVITIES.

CONSTRUCTION OF SANITARY SEWER AND STORM SEWER WITHIN THE RIGHT-OF-WAY TO BE CONSIDERED PUBLIC UTILITIES INCLUDING THE TRUNK LINE EXTENDING TO THE FIRST MANHOLE OR INLET OUTSIDE THE RIGHT-OF-WAY. THE MANHOLE OR INLET OUTSIDE OF THE RIGHT-OF-WAY IS TO BE CONSIDERED PRIVATE.

4050 BELTLINE RD
WALMART STORES, INC.
SAM'S CLUB
BLOCK A, LOT 1
COMMERCIAL IMPROVEMENTS PLANNED DEVELOPMENT TO BE DEDICATED TO THE TOWN OF ADDISON (1.2393 AC.)



PUBLIC PARK
SEE LANDSCAPE PLANS FOR DETAILS