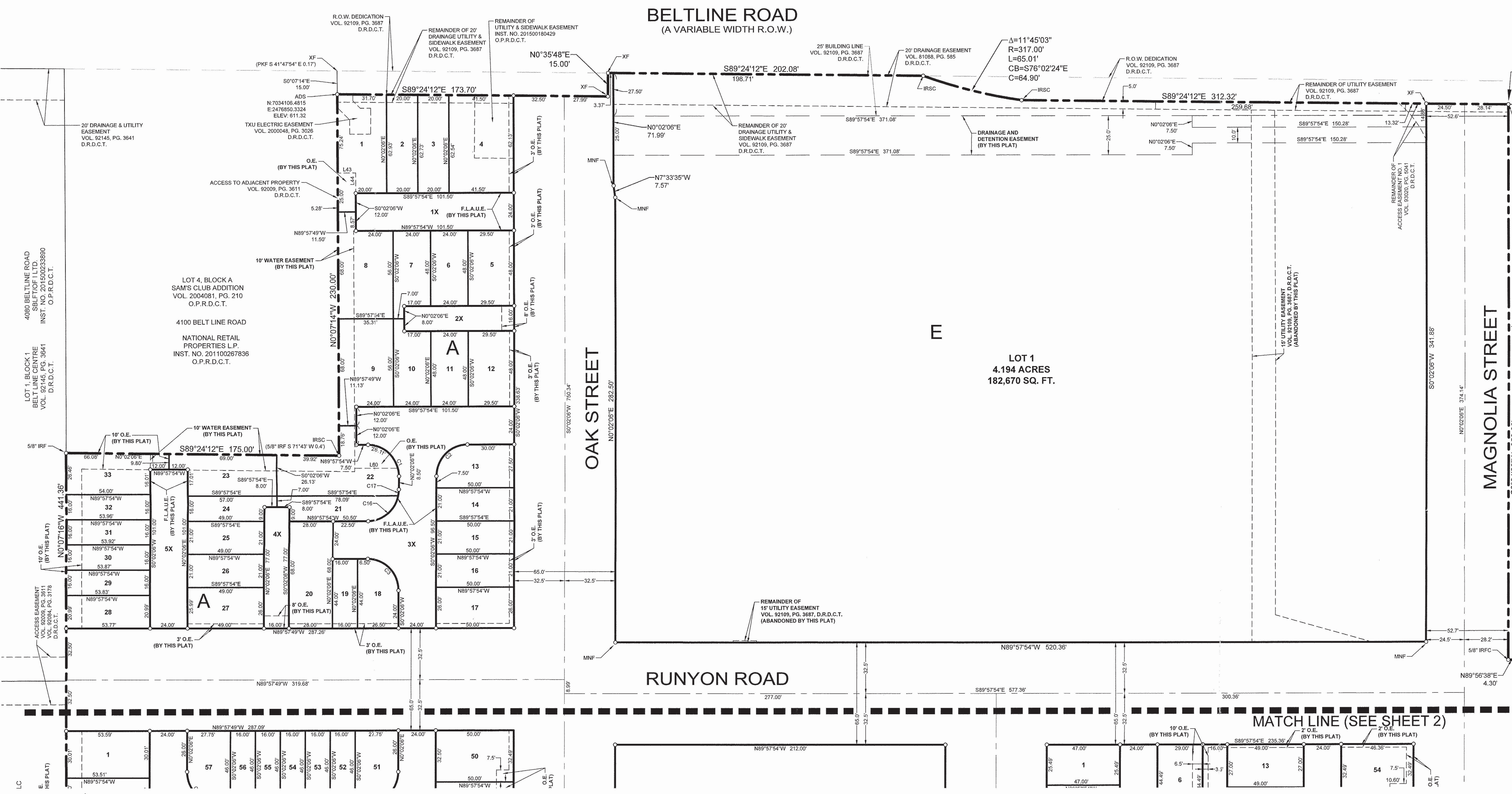


BELTLINE ROAD
(A VARIABLE WIDTH R.O.W.)

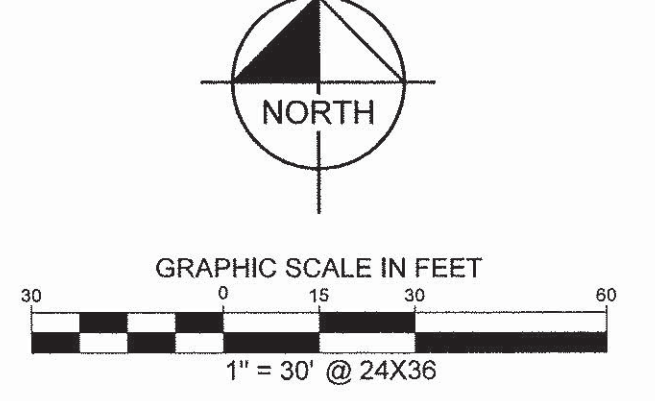
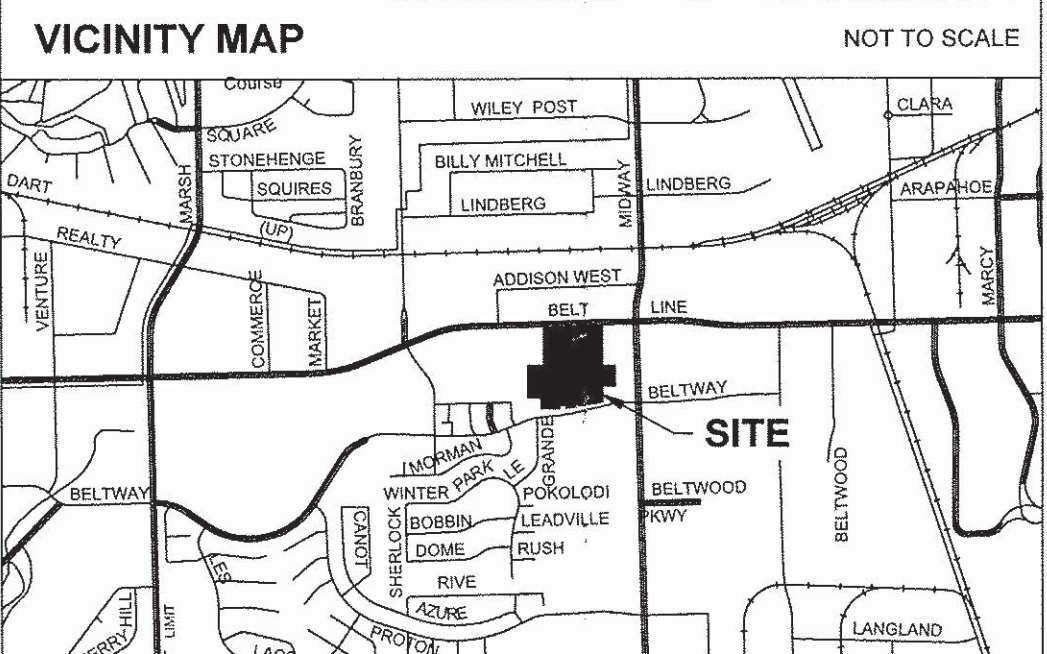


LOT 1
4.194 ACRES
182,670 SQ. FT.

- LEGEND:**
- Δ = DELTA ANGLE OR CENTRAL ANGLE
 - P.O.B. = POINT OF BEGINNING
 - D.R.D.C.T. = DEED RECORDS OF DALLAS COUNTY, TEXAS
 - O.P.R.D.C.T. = OFFICIAL PUBLIC RECORDS, DALLAS COUNTY, TEXAS
 - VOL. = VOLUME
 - PG. = PAGE
 - R.O.W. = RIGHT-OF-WAY
 - INST. NO. = INSTRUMENT NUMBER
 - XF = "X" IN CONCRETE FOUND
 - IRSC = 5/8" IRON ROD WITH PLASTIC CAP STAMPED "KHA" SET
 - U.E. = UTILITY EASEMENT
 - A.E. = ACCESS EASEMENT
 - A.U.E. = ACCESS AND UTILITY EASEMENT
 - F.L.A.U.E. = FIRE LANE, ACCESS AND UTILITY EASEMENT
 - O.E. = ONCOR ELECTRIC DELIVERY COMPANY LLC EASEMENT

THE PURPOSE OF THIS REPLAT IS TO CREATE 258 LOTS, 17 COMMON AREAS AND DEDICATE RIGHT-OF-WAY.

REPLAT
ADDISON GROVE ADDITION
BLOCK A, LOTS 1-33, BLOCK B, LOTS 1-57
BLOCK C, LOTS 1-34, BLOCK D, LOTS 1-54
BLOCK E, LOT 1, BLOCK F, LOT 18X
OPEN SPACE LOTS 1X-17X
BEING A REPLAT OF LOT 1, BLOCK A



Kimley»Horn

13455 Noel Road, Two Galleria Office
Tower, Suite 700, Dallas, Texas 75240 FIRM # 10115500 Tel. No. (972) 241-1111 Fax No. (972) 241-1112

| | | | | |
|----------|----------|------------|-----------|-------------|
| Scale | Drawn by | Checked by | Date | Project No. |
| 1" = 30' | SRD | DAB | Dec. 2017 | 064488001 |