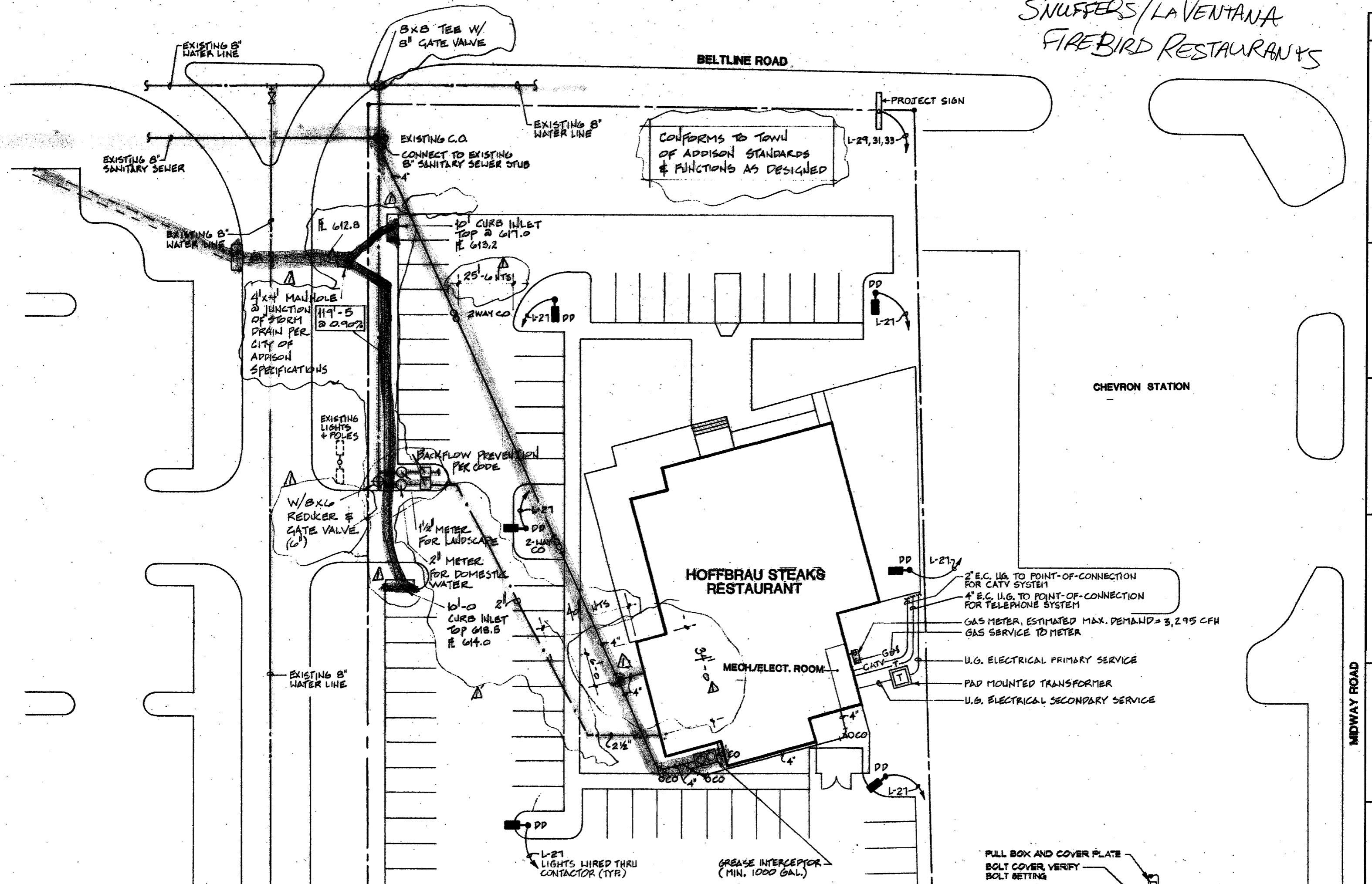


SNUFFERS/LA VENTANA
FIREBIRD RESTAURANTS



CONFORMS TO TOWN OF ADDISON STANDARDS & FUNCTIONS AS DESIGNED

4"x4" MANHOLE @ JUNCTION OF STORM DRAIN PER CITY OF ADDISON SPECIFICATIONS

2" E.C. U.G. TO POINT-OF-CONNECTION FOR CATV SYSTEM
4" E.C. U.G. TO POINT-OF-CONNECTION FOR TELEPHONE SYSTEM
GAS METER, ESTIMATED MAX. DEMAND = 3,295 CFH
GAS SERVICE TO METER

U.G. ELECTRICAL PRIMARY SERVICE
PAD MOUNTED TRANSFORMER
U.G. ELECTRICAL SECONDARY SERVICE

FULL BOX AND COVER PLATE
BOLT COVER, VERIFY BOLT SETTING
CHAMFER

EL
GE
TE
GE
CA
GE
NS
GE
SA
GE
PB
GE