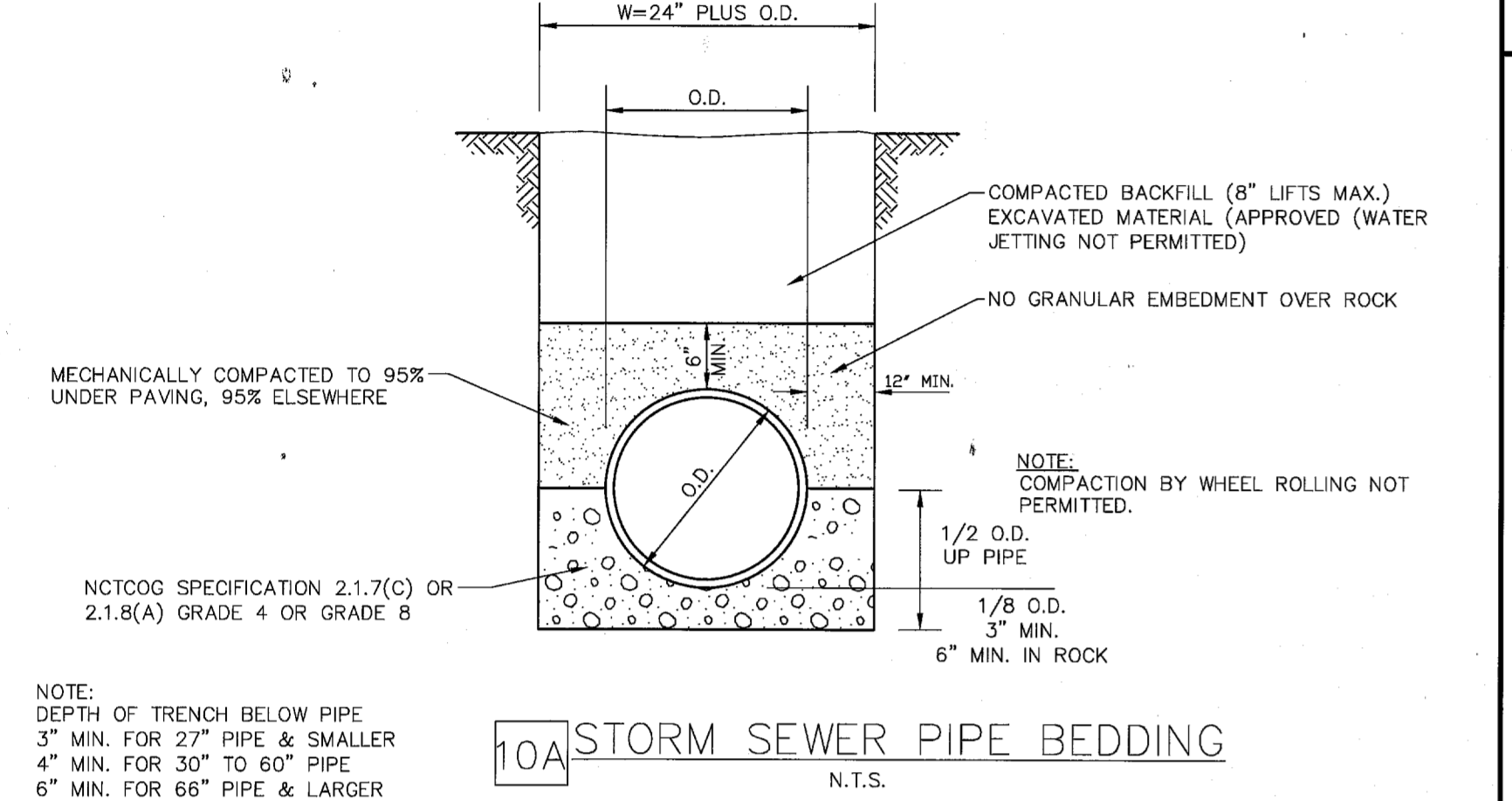
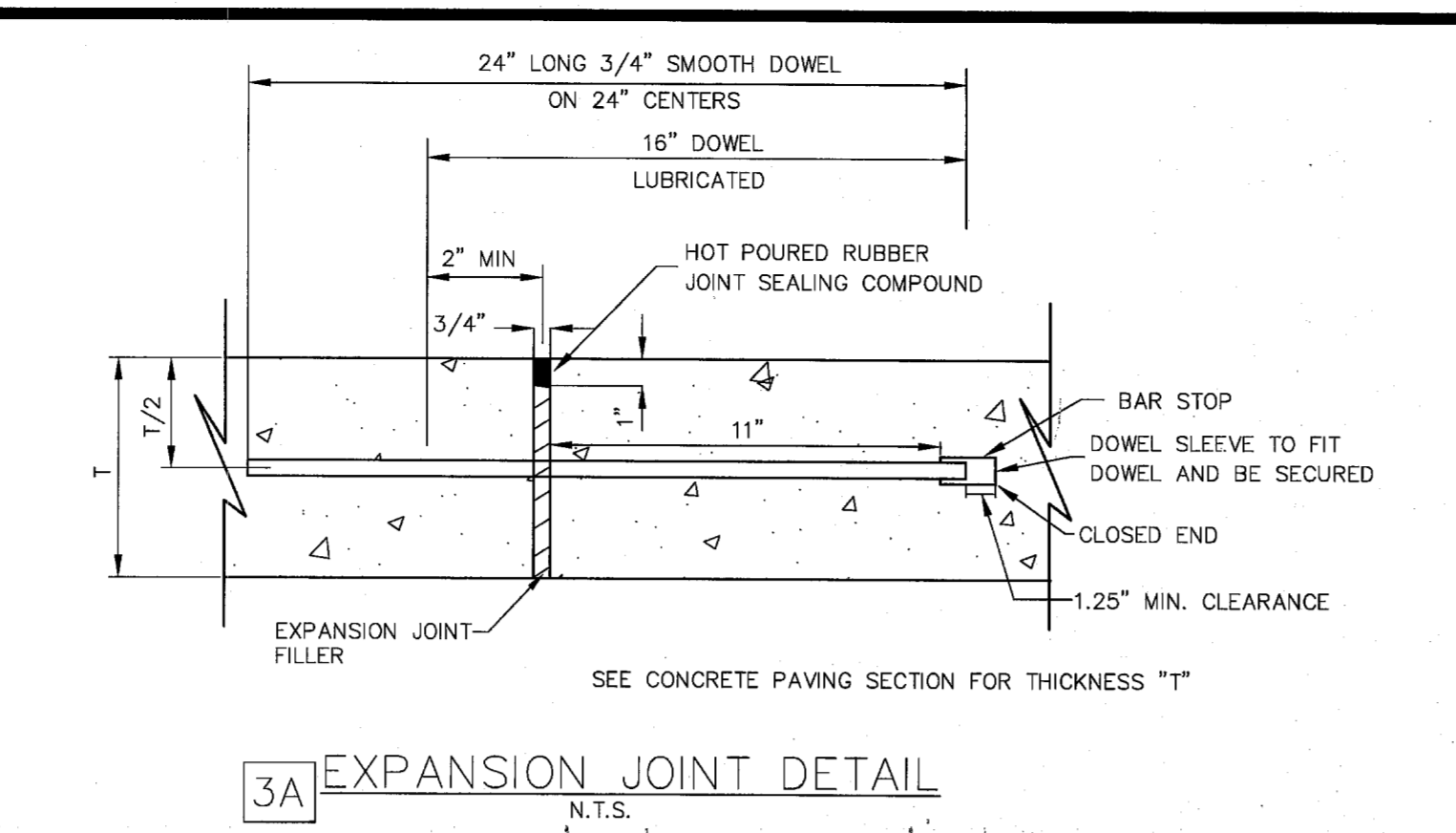


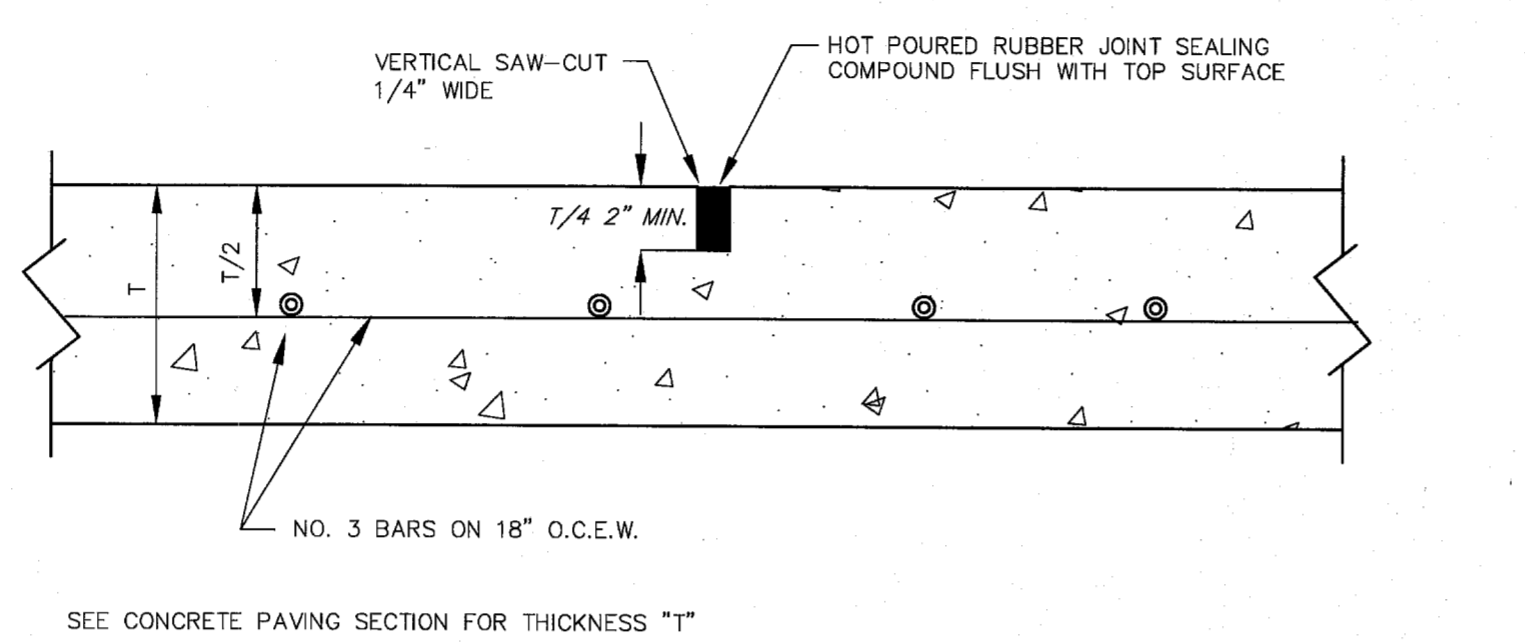
CONCRETE STREET OR DRIVEWAY REPAIR
ASPHALT STREET OR DRIVEWAY REPAIR



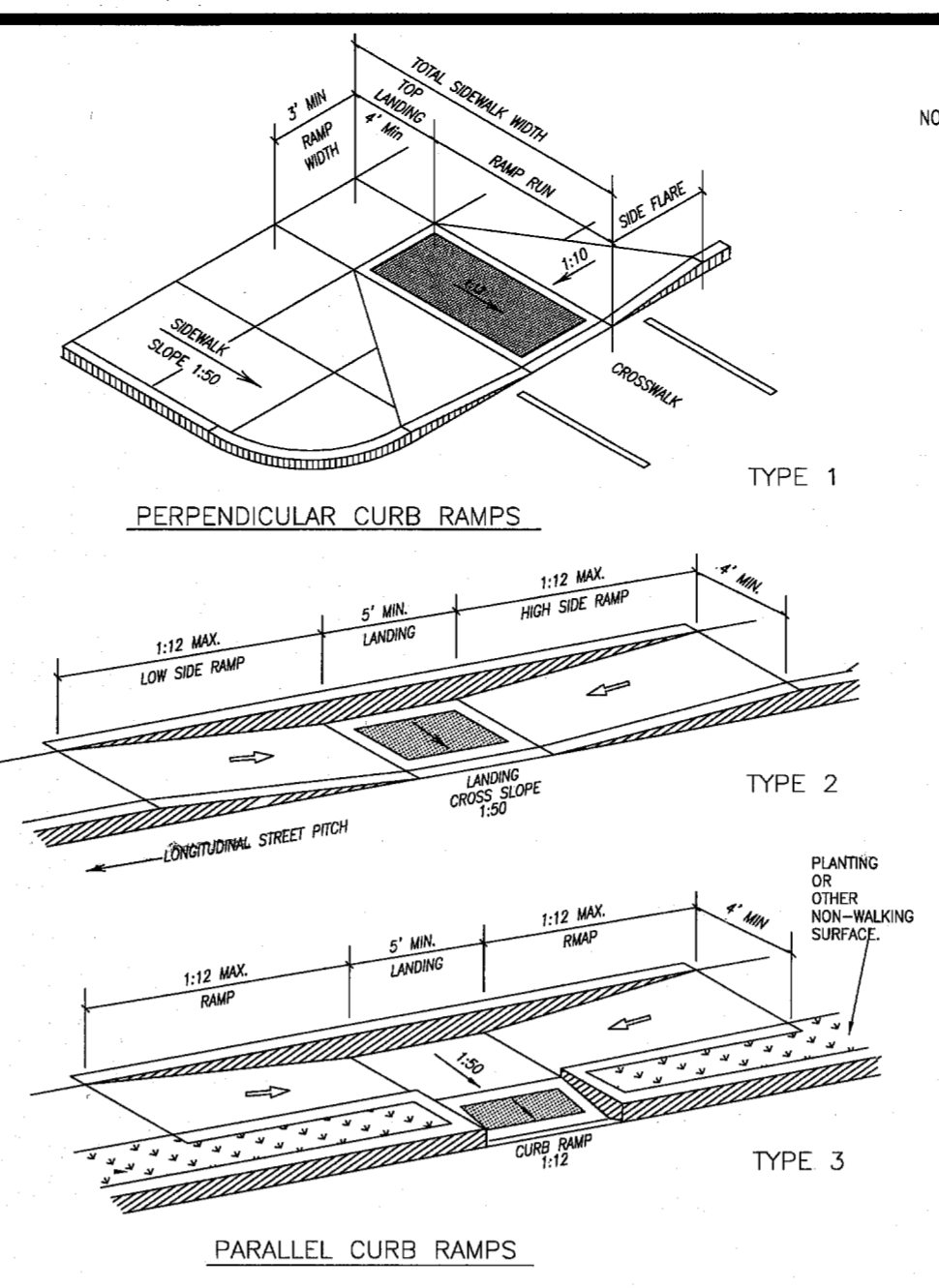
10A STORM SEWER PIPE BEDDING
N.T.S.



3A EXPANSION JOINT DETAIL
N.T.S.

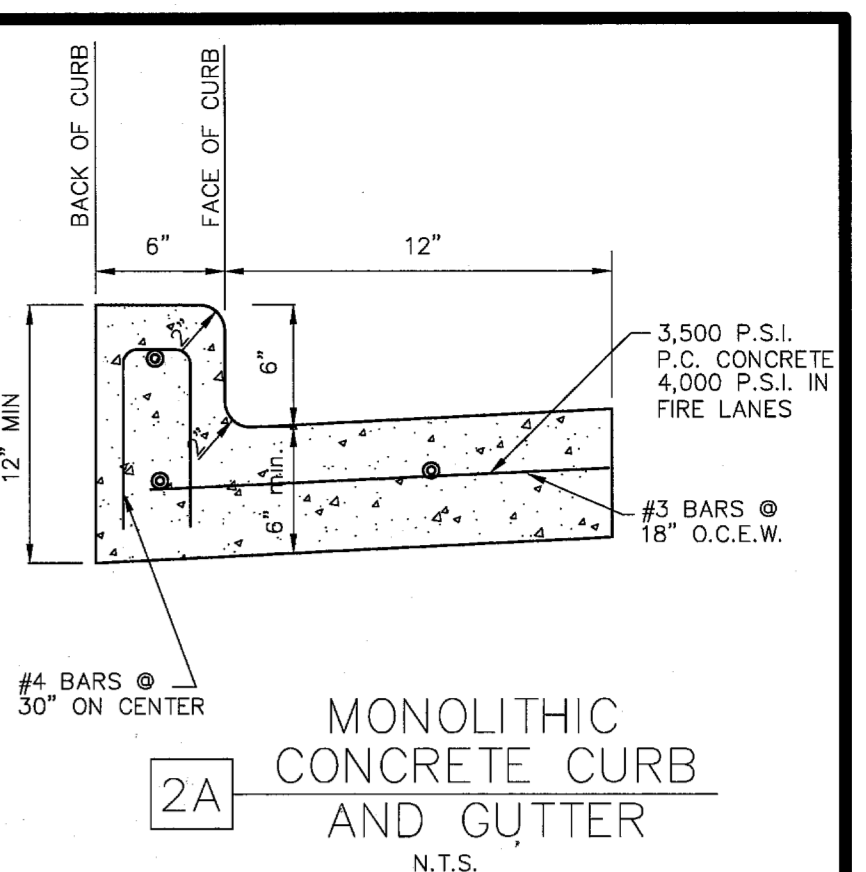


3B CONTROL JOINT
N.T.S.

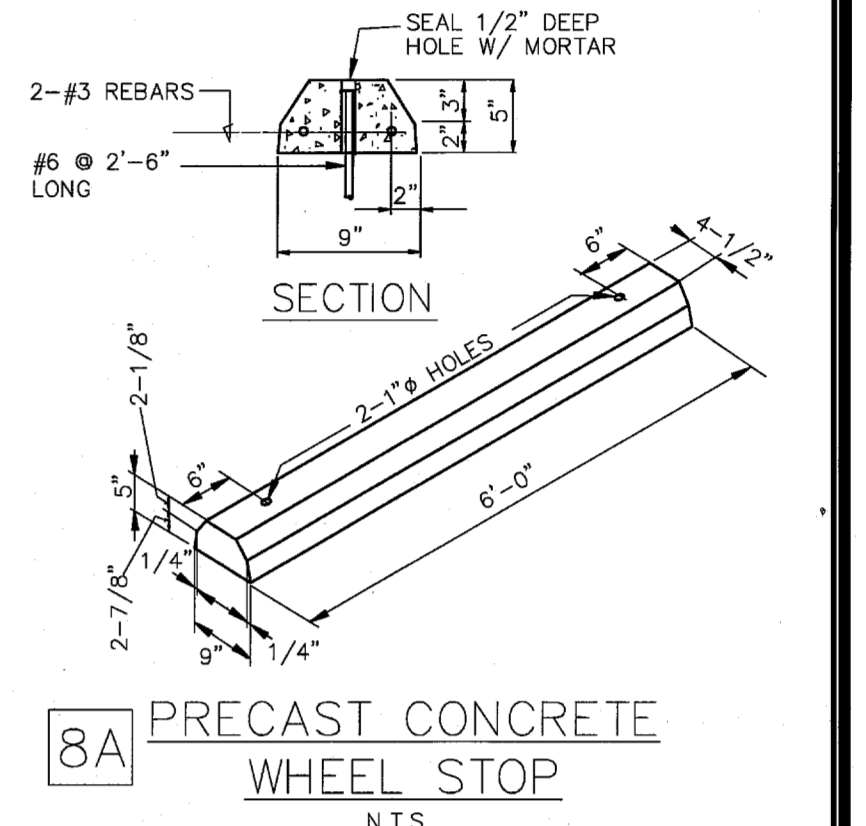


7C WHEELCHAIR RAMP IN SIDEWALK (AT OR NEAR BUILDING SIDEWALK)
N.T.S.

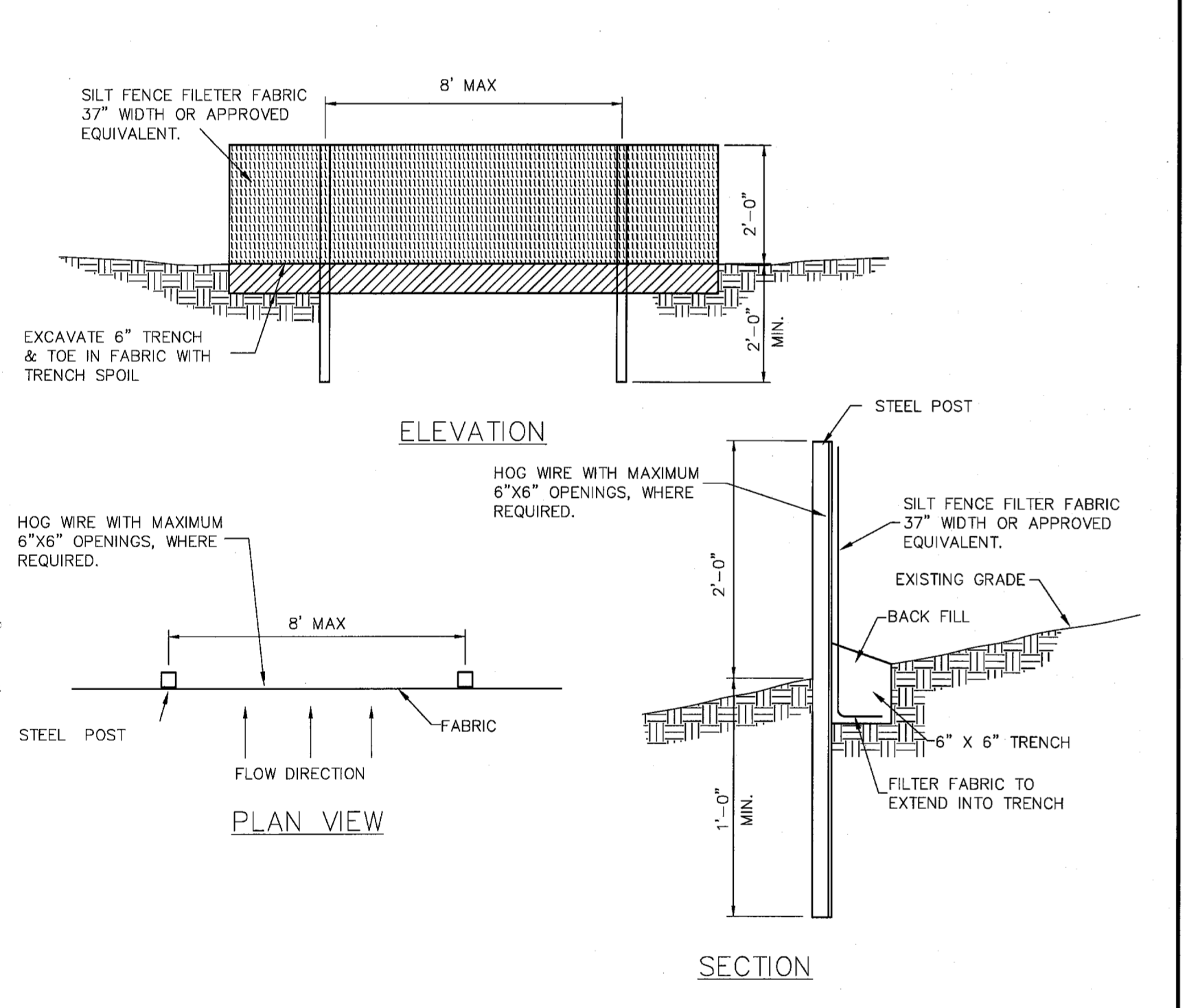
- NOTES:
1. ALL SLOPES ARE MAXIMUM ALLOWABLE. FLATTER SLOPES THAT WILL STILL DRAIN PROPERLY ARE ENCOURAGED.
 2. ALL CONCRETE SURFACES SHALL RECEIVE A LIGHT BROOM FINISH UNLESS NOTED OTHERWISE IN THE PLANS.
 3. FOR PURPOSES OF WARNING, THE CURB RAMPS SHALL HAVE A LIGHT REFLECTIVE VALUE AND TEXTURE THAT SIGNIFICANTLY CONTRASTS WITH THAT OF ADJOINING PEDESTRIAN ROUTES.
 4. TEXTURES MAY CONSIST OF PAVERS WITH TRUNCATED DOMED SURFACES. TEXTURES ARE REQUIRED TO BE DETECTABLE UNDERFOOT. SURFACES THAT WOULD ACCUMULATE ALL WATER TO ACCUMULATE ARE PROHIBITED.
 5. COLOR CONTRAST, FOR EXAMPLE, CAN BE ACCOMPLISHED WITH COLORED CONCRETE PAVERS THAT HAVE TRUNCATED DOMES, WHICH WOULD PROVIDE A CONTRAST WITH TYPICALLY LIGHT COLORED CONCRETE.
 6. ADDITIONAL INFORMATION ON CURB RAMP LOCATION, DESIGN, VISIBILITY AND TEXTURE MAY BE FOUND IN THE CURRENT EDITION OF THE TEXAS ACCESSIBILITY STANDARDS (TAS) PREPARED AND ADMINISTERED BY THE TEXAS DEPARTMENT OF LICENSING AND REGULATION (TDLR).
 7. ANY PART OF THE ACCESSIBLE ROUTE WITH A SLOPE GREATER THAN 1:20 (5%) SHALL BE CONSIDERED A RAMP. IF A RAMP HAS A RISE GREATER THAN 6 INCHES OR A HORIZONTAL PROJECTION GREATER THAN 72 INCHES, THEN IT SHALL HAVE HANDRAILS ON BOTH SIDES. THE ONLY EXCEPTION IS AT CURB RAMPS. HANDRAILS ARE NOT REQUIRED ON CURB RAMPS. CURB RAMPS SHALL BE PROVIDED WHERE EVER AN ACCESSIBLE ROUTE CROSSES (PENETRATES) A CURB. CURB RAMPS ARE GENERALLY INTERPRETED AS ONLY THE PORTION TYING DIRECTLY INTO THE ROADWAY.
 8. TRAFFIC SIGNAL OR ILLUMINATION POLES, GROUND BOXES, CONTROLLER BOXES, SIGNS, DRAINAGE FACILITIES AND OTHER ITEMS SHALL BE PLACED SO NOT TO OBSTRUCT THE ACCESSIBLE ROUTE.
 9. ALL SIDEWALKS WILL BE DOWELED INTO EXISTING SIDEWALKS, DRIVEWALKS, DRIVEWAYS, INLET BOXES, RETAINING WALLS, ETC.
 10. ALL SIDEWALK CROSS-SLOPES SHALL NOT EXCEED 1:50 (2%).



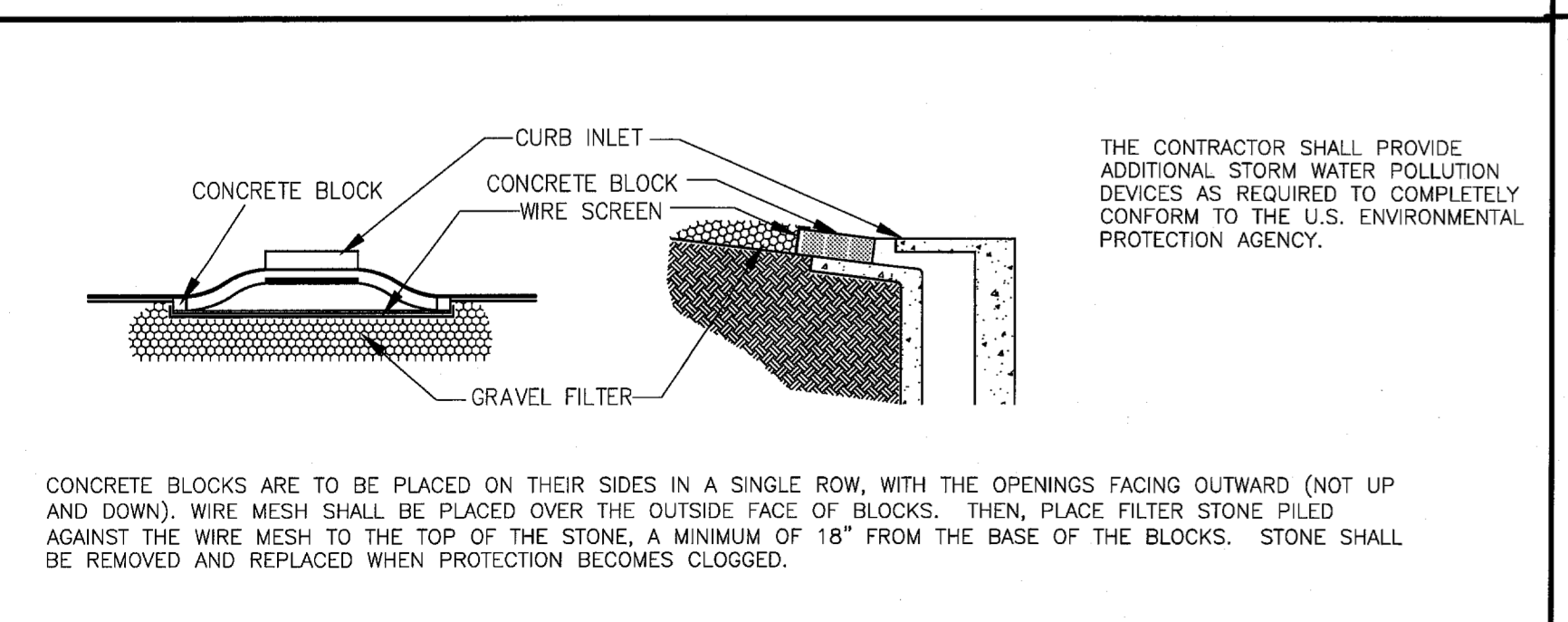
2A MONOLITHIC CONCRETE CURB AND GUTTER
N.T.S.



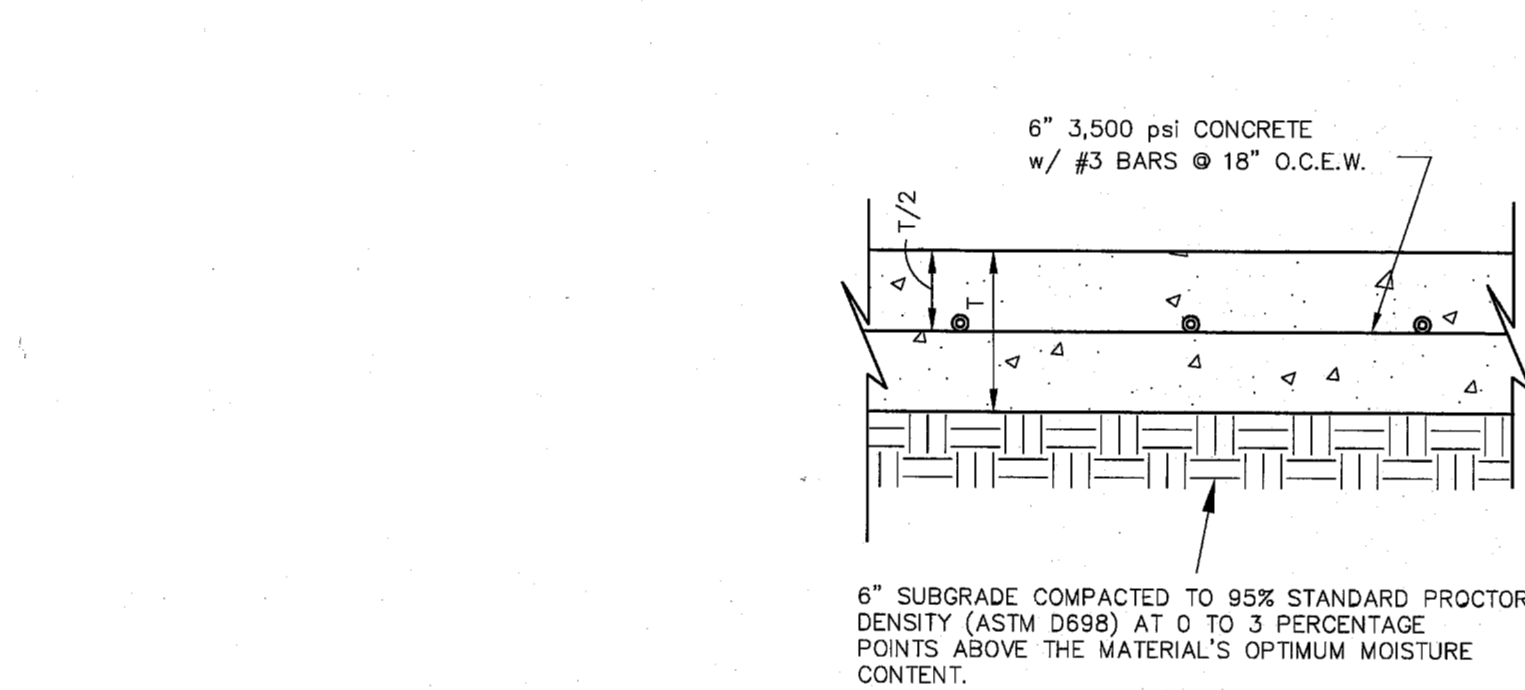
8A PRECAST CONCRETE WHEEL STOP
N.T.S.



31A SILT FENCE DETAIL
N.T.S.



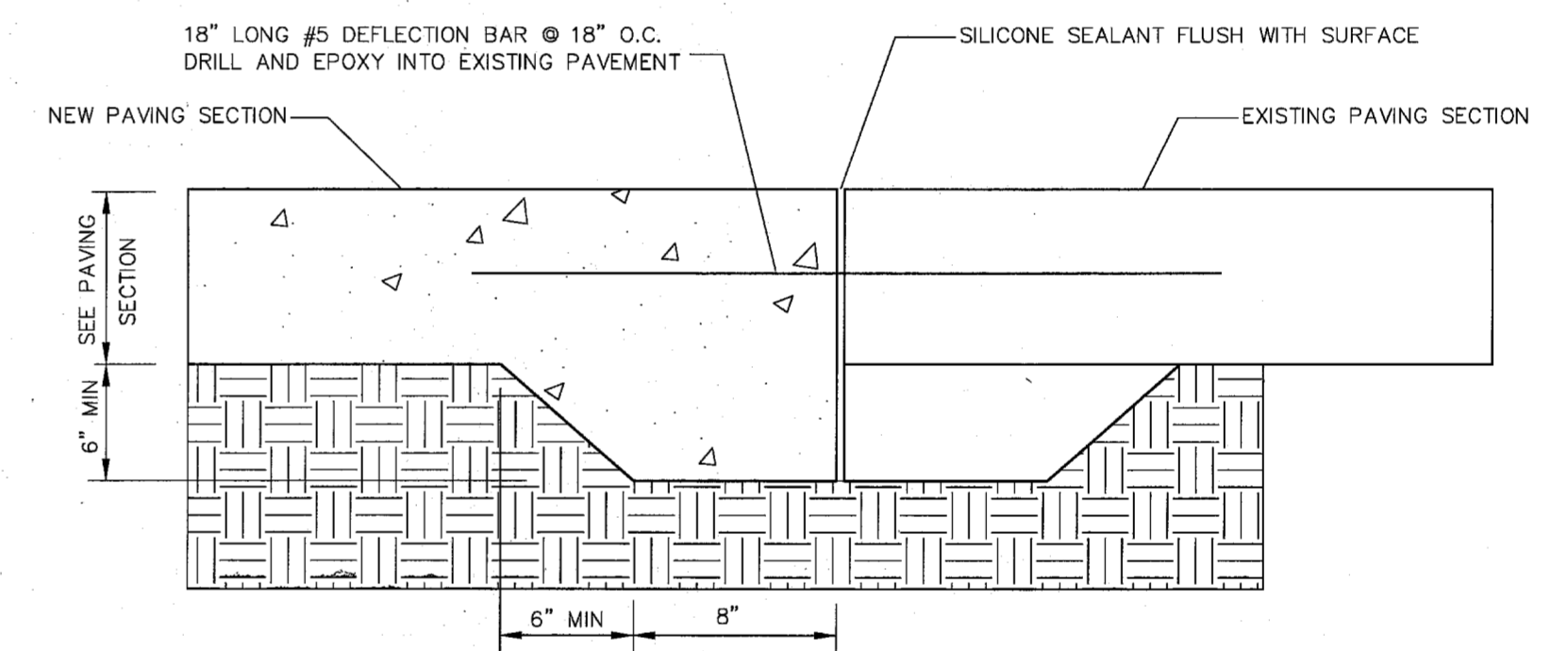
33E CURB INLET PROTECTION
N.T.S.



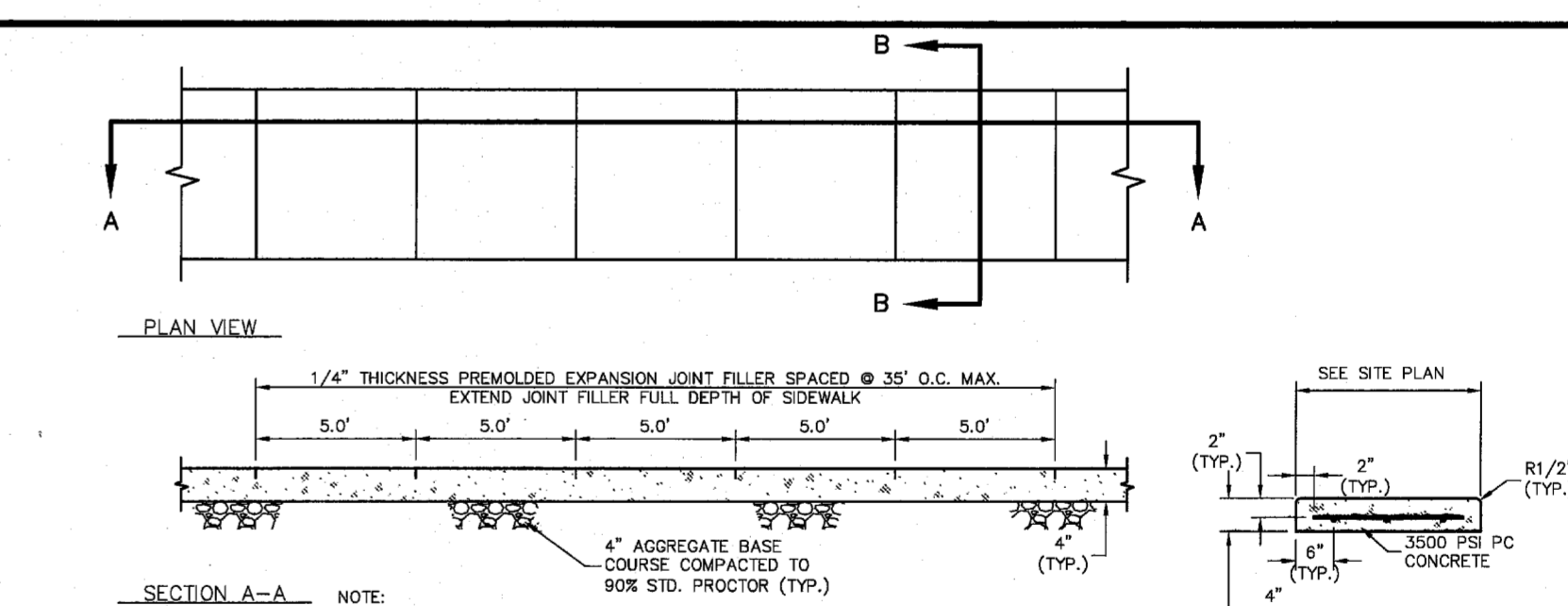
1C REINF. MEDIUM DUTY CONCRETE PAVING
N.T.S.

- PAVING NOTES:
1. REFER TO GEOTECHNICAL REPORT FOR ADDITIONAL RECOMMENDATIONS AND REQUIREMENTS. IF ANY CONFLICTS WITH THIS REPORT AND THESE DETAILS, THE MORE STRINGENT SPECIFICATION SHALL APPLY.
 2. CONCRETE TO HAVE 5% (+/- 1%) AIR ENTRAINMENT.
 3. AREAS OF CONCRETE IN THE FIRELANE SHALL MEET OR EXCEED THE MINIMUM REQUIREMENTS OF THE GOVERNING JURISDICTION.
 4. NO SAND IS ALLOWED UNDER PAVEMENT.

CONCRETE PAVING SECTIONS



3D CONNECTION TO EXIST. CONCRETE PAVING
N.T.S.



7A CONCRETE SIDEWALK (PRIVATE)
N.T.S.

Engineer Information:
The Bousquet Group, Inc.
501 S. Carroll Blvd.
Ste. 201
Denton, TX. 76201
940.566.0088
940.566.0088 fax

Texas Firm No. F-8942
Professional of Record:
TRAWS J. BOUSQUET
86084
02/13/2015

FIREBIRD RESTAURANTS
 4180 BELT LINE RD.
 ADDISON, TX 75001

Revisions:

#	Date Issued	Description
1	01/08/2015	1st City Submittal
1	02/13/2015	2nd City Submittal

Sheet Title:
DETAIL SHEET 1
Date: Jan 07, 2015
Project Number: 14019
Drawn By: JNM
Scale:
Sheet Number:
C-7.0