



FOR ADDISON USE ONLY  
 Permit Number: 1496  
 Location: 14911 Quorum

**APPLICATION**  
**Right of Way Work Permit-FRANCHISE**

(For Franchise Utility/CTP - Street Cut/Excavation/Lane Closure)

**PLEASE PRINT LEGIBLY**

Date of Application: 08/01/2018  
 Facility Owner Company: MClmetro Access Transmission Services Corp. Company Phone #: (214) 237-7746  
 Utility/CTP Representative: Bill Kitralv Cell Phone #: (972) 207-0253  
 Utility/CTP Representative E-mail: bill.kitralv@ventzon.com  
 General Contractor: Future Telecom Company Phone # (972) 329-6400  
 Site Supervisor Name: Jeromie Cagle 24-hour Phone # (469) 265-8727  
 Contractor E-mail: ricky@futuretelco.com Site Foreman E-mail: jeromie@futuretelco.com  
 Work Site Address and Location: 14911 Quorum Dr  
 Purpose and general description of work: Placing new hand hole, installing approx. 200 LF of 2.5" HDPE by directional bore and pulling new cable through existing and new conduit, and removing/replacing approx. 36 SF of concrete sidewalk.  
 Proposed Start Work Date: August 6, 2018 Estimated Completion Date: October 31, 2018  
 Pavement Cut?  Yes  No Directional Bore/Boring?  Yes  No Excavation?  Yes  No  
 Lane Closure?  Yes  No Other: \_\_\_\_\_  
 Ricky Riggs \_\_\_\_\_ Position with Company \_\_\_\_\_  
 Applicant's Printed Name \_\_\_\_\_ Signature \_\_\_\_\_  
 Applicant's E-mail: ricky@futuretelco.com Applicant's Phone #: (972) 877-9408  
 Don Riggs \_\_\_\_\_ Phone Number \_\_\_\_\_  
 Direct Supervisor's Name \_\_\_\_\_  
 Supervisor's E-mail: don@futuretelco.com Company Name \_\_\_\_\_

**FOR ADDISON USE ONLY**

Received By: Michael S Entered?  Yes  No Received Date: 8-2-18  
 Approved By: David L... Inspector: JFW Issue Date: 8/3/18  
 Plans Submitted?  Yes  No  N/A Traffic Control Plan submitted?  Yes  No  N/A Expiration Date: 8/17/18  
 Insurance Provided?  Yes  No  On File Performance/Maintenance Bond?  Yes  No  On File  N/A  
 Fee Paid: NA Receipt #: CTP Processed By: \_\_\_\_\_  
 Picked Up By: Michael D... Company: Clayton Date & Time: 8-6-18  
 TOWN OF ADDISON INFRASTRUCTURE AND DEVELOPMENT SERVICES DEPARTMENT  
 ATTN.: RIGHT OF WAY PERMIT - DAVE WILDE 972-450-2847  
 16801 WESTGROVE RD. ADDISON, TX 75001-9010  
 PHONE: 972-450-2871 FAX: 972-450-2837

**RIGHT OF WAY, EXCAVATION &  
LANE CLOSURE PERMIT**

**W-1496**

PERMIT NUMBER

**8/06/18**

START DATE

**10/31/18**

EST. COMPLETION DATE

**FUTURE TELECOM MCIMETRO**

CONTRACTOR

FOR

**14911 QUORUM DR**

LOCATION (ADDRESS)

**WEST ROW IN FRONT OF BUILDING**

LOCATION (ACTUAL)

**INSTALL 202' OF 2.5" HDPE CONDUIT AND CABLE**

TYPE OF WORK

THIS CARD MUST BE DISPLAYED ON THE JOB SITE AT ALL TIMES



**INFRASTRUCTURE &  
DEVELOPMENT SERVICES**

16801 WESTGROVE DRIVE  
ADDISON, TEXAS 75001  
972.450.2871

MCImetro  
ACCESS TRANSMISSION SERVICES LLC.

OUTSIDE PLANT CONSTRUCTION

FIBER OPTIC CABLE ROUTE

# SOUTHERN GLAZERS WINE AND SPIRITS

14911 QUORUM DR  
ADDISON, TX 75254  
DALLAS COUNTY

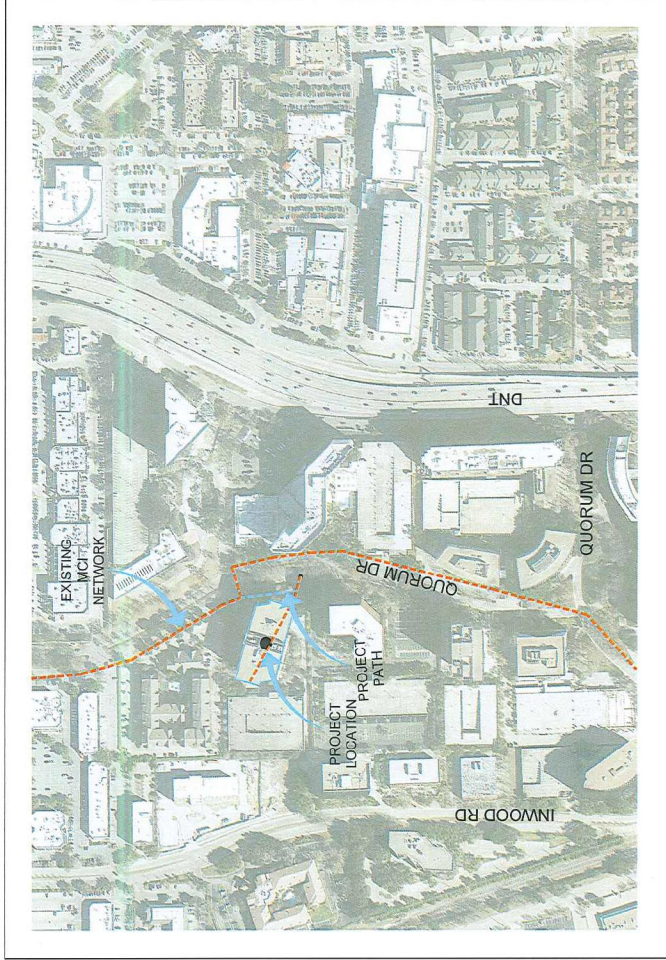
PROJECT STATUS: CONSTRUCTION

DATE: 7/26/2018

SHEET #	SHEET TITLE
01	COVER
02	PROJECT MAP
03	CONTACT
04	GENERAL NOTES
05	MCI GENERAL NOTES
06	CLARIFICATION SUMMARY SHEET
07	SYMBOLS KEY
08	CONSTRUCTION DETAILS
09	HANDHOLE DETAILS
10	CURB MARKER DETAIL
11	MANHOLE DETAILS
12	CONDUIT DETAILS
13	PIPE PRODUCT DETAILS
14	CONDUIT SPECIFICATION
15	TOP LAYOUT
16	TCP 2-5
17	OVERALL SITE PLAN
18-23	DETAILS

# LOCATION MAP

ADDISON, TX  
DALLAS COUNTY



## PROJECT MAP



SOUTHERN GLAZERS  
WINE AND SPIRITS

CLARIFICATION NO. QUANTITY

Mclmerto  
ACCESS TRANSMISSION SERVICES  
CORPORATION  
OUTSIDE PLANT CONSTRUCTION  
TITLE: FIBER OPTIC CABLE ROUTE  
VERIZON BUSINESS  
14911 QUORUM DR ADDISON, TX 75254

DATE: 7/29/2018  
ENGINEER: CORBFENDEY  
CHECKED BY: MD  
DRAWN BY: PN

REVISIONS		
NO.	DATE	DESCRIPTION

EXCEPT AS MAY BE OTHERWISE PROVIDED BY THE TERMS OF ANY APPLICABLE CONTRACT, THIS DRAWING AND THE INFORMATION CONTAINED HEREIN SHALL REMAIN THE PROPERTY OF MCLMERTO COMMUNICATIONS SERVICE AND NOT BE REPRODUCED, COPIED, OR USED FOR ANY PURPOSE WITHOUT THE WRITTEN PERMISSION OF MCLMERTO COMMUNICATIONS SERVICE.

SCALE: NA  
HORIZONTAL: NA  
VERTICAL: NA  
SHEET 02 OF 23  
14911 QUORUM DR.DWG



SOUTHERN GLAZERS  
WINE AND SPIRITS

CLARIFICATION NO.	QUANTITY

No.	DATE	DESCRIPTION	BY

EXCEPT AS MAY BE OTHERWISE PROVIDED BY THE TERMS AND CONDITIONS OF A CONTRACT, THIS SHALL REMAIN THE PROPERTY OF MOORE COMMUNICATIONS SERVICES, INC. AND IT IS NOT TO BE REPRODUCED, COPIED, OR USED FOR ANY PURPOSES WITHOUT THE WRITTEN PERMISSION OF MOORE COMMUNICATIONS SERVICES, INC.

SCALE: NA  
 HORIZONTAL: NA  
 VERTICAL: NA  
 SHEET 03 OF 23

## CONTACT SHEET

CITY GOVERNMENT  
 TOWN OF ADDISON, TX  
 INSPECTOR - DAVID WILDE  
 (972) 456-2847  
 DWILDE@ADDISONTX.GOV

COUNTY GOVERNMENT  
 N/A

STATE GOVERNMENT  
 N/A

FEDERAL GOVERNMENT  
 N/A

OTHER  
 N/A

RAILROADS  
 N/A

UTILITIES  
 MCI UTILITY LOCATE  
 TEXAS ONE CALL SYSTEM (UTILITY LOCATES)  
 1-800-624-3675  
 811

VERIZON BUSINESS  
 JEFF BUEHLER  
 CELL: (214) 965-2518  
 E-MAIL: JEFF.BUEHLER@VERIZON.COM

OUTSIDE PLANT ENGINEERING

OUTSIDE PLANT CONSTRUCTION  
 PAUL BOWLES  
 E-MAIL: PAUL.BOWLES@VERIZON.COM

RIGHT-OF-WAY  
 AGENT:  
 MANAGER:

CONTRACTS  
 COORDINATOR:  
 MANAGER:

OTHERS  
 PROGRAM MANAGER:  
 LIGHTWAVE ENGINEER:  
 CIVIL ENGINEER:  
 TERMINAL CONST. REP.:  
 SPLICING MANAGER:  
 TSO MANAGER:

ENGINEERING CONTRACTOR  
 ENGINEERING FIRM:  
 COBB, FENDLEY & ASSOCIATES, INC.  
 13480 NORTHWEST FREEWAY, SUITE 1100  
 HOUSTON, TX 77040  
 OFFICE: (713) 462-3242  
 FAX: (713) 462-3262

ENGINEERING CONTACT:  
 VICE PRESIDENT  
 VINEETA JAYARAM, P.E.  
 PROJECT MANAGER  
 BETH BOWDEN  
 UTILITY DESIGN GROUP LEAD  
 MICHAEL DUVAL, P.E.

CONSTRUCTION CONTRACTOR  
 NAME OF FIRM:  
 FUTURE TELECOM, LLC  
 1800 BRUTON ROAD  
 BALCH SPRINGS, TX 75160  
 CONSTRUCTION CONTACT:  
 RICKY RIGGS  
 JEROMIE CAGLE  
 E-MAIL: RICKY@FUTURETELECO.COM  
 PHONE: (469) 265-8727

McMetro  
 ACCESS TRANSMISSION SERVICES CORPORATION  
 OUTSIDE PLANT CONSTRUCTION  
 TITLE: FIBER OPTIC CABLE ROUTE  
 VERIZON BUSINESS  
 14911 QUORUM DR. ADDISON, TX 75254

DATE: 7/20/2018  
 ENGINEER: COBBFENDLEY  
 CHECKED BY: MD  
 DRAWN BY: PN

REVISIONS

19311 QUORUM DR. DWG

# GENERAL NOTES / CLARIFICATION NOTES



### CLARIFICATION NOTES (CONTINUED)

CLARIFICATION NO.	QUANTITY	
100	200	JACK AND DRY BORE CONDUIT(S)
210		PLACE CONDUIT
212		PLACE HIGH DENSITY POLYETHYLENE (HDPE)
213		ROCK ADDER
214		SLURRY BACKFILL ADDER
215		EXPOSE CONDUIT
216		EXPOSE CONDUIT AND RELOCATE
217		EXPOSE CONDUIT AND REPLACE/SUBSTITUTE
218		EXPOSE AND REMOVE CONDUIT
219		EXPOSE AND REMOVE CONDUIT (ABANDONED)
220		CONCRETE ENCASE
221		REMOVE CONCRETE ENCASEMENT
222		REMOVE CONCRETE CAP
240		PLACE HANDHOLE
244		REMOVE EXISTING HANDHOLE
245		RELOCATE HANDHOLE
246		REPLACE/SUBSTITUTE HANDHOLE
247		SWAMP PLOW
248		PLACE MANHOLE
252		REMOVE EXISTING MANHOLE
255		RELOCATE PRECAST MANHOLE
256		REPLACE/SUBSTITUTE PRECAST MANHOLE
180		CONSTRUCT WALL
270		REMOVE AND RESTORE ASPHALT
280		REMOVE AND RESTORE CONCRETE
281		REMOVE AND RESTORE SIDEWALK
282		REMOVE AND RESTORE CURBING
310		ATTACH CONDUIT TO WALL OR STRUCTURE
315		DETACH CONDUIT FROM WALL OR STRUCTURE
320		CORE BORE
330		ATTACH PULL/SPLICE BOX TO WALL OR STRUCTURE
410		PULL CABLE
411		PULL THROUGH DUCT (INNERDUCT)
415		REMOVE CABLE FROM CONDUIT
420		REPOSITION ACTIVE CABLE SLACK
510		DIRECT BURY CABLE
515		EXPOSE DIRECT BURIED CABLE
516		EXPOSE DIRECT BURIED CABLE AND RELOCATE
517		REMOVE AND DISPOSE OF CABLE
520		PLACE AERIAL CABLE
525		RELOCATE AERIAL CABLE
518		RELASH AERIAL CABLE
527		REMOVE AERIAL CABLE
528		PLACE POLE/PUSH BRACE
530		REMOVE POLE/PUSH BRACE
535		JETTING CONDUIT
610		EMBEDMENT PLOW
620		DIRECTIONAL BORE
630		
710		PLACE BURIED CABLE MARKERS AND SIGNSM/WCOM
711		WATER CROSSING SIGNS
713		PLACE ISOLATOR/PROTECTION SYSTEM AT EXISTING HANDHOLES/MANHOLE
712		REMOVE BURIED CABLE MARKER POST/HARDWARE
714		REMOVE CONCRETE BURIED CABLE MARKER POST

### CLARIFICATION NOTES

- VERIZON BUSINESS COMPRESSES THE FOLLOWING OPERATING ENTITIES:
  - MCI COMMUNICATIONS SERVICES, INC.
  - MCI METRO ACCESS TRANSMISSION SERVICES CORPORATION
  - MCI METRO ACCESS TRANSMISSION SERVICES OF VIRGINIA, INC.
  - METRO POLYMER SYSTEMS OF MASSACHUSETTS, INC.
  - METRO POLYMER SYSTEMS OF NEW YORK, INC.
- ALL WORK TO BE PERFORMED IN STRICT ACCORDANCE WITH THE APPLICABLE CODES OR REQUIREMENTS OF ANY REGULATING GOVERNMENTAL AGENCY, VERIZON BUSINESS AND THE RIGHT-OF-WAY GRANTOR.
- LOCATIONS OF SOME OF THE PHYSICAL FEATURES WERE OBTAINED FROM DATED RAILROAD EVALUATION MAPS OR OTHER DRAWINGS AND MAY NOT BE AS SHOWN OR DEPICTED ON THESE DRAWINGS.
- UNDERGROUND UTILITIES HAVE BEEN PLOTTED FROM AVAILABLE RECORDS AND FIELD OBSERVATIONS BUT ARE NOT NECESSARILY EXACT. THEREFORE, UTILITY LOCATIONS WILL BE VERIFIED AT LEAST 100 FEET IN ADVANCE OF TRENCHING OR PLOWING, SO THAT CHANGES IN CABLE PLACEMENT CAN BE MADE IN THE EVENT OF CONFLICT.
- ALL KNOWN BURIED OBSTRUCTIONS ARE SHOWN ON THE CONSTRUCTION DRAWINGS. ANY AND ALL OTHERS ENCOUNTERED ARE ALSO THE RESPONSIBILITY OF THE CONTRACTOR TO LOCATE, PROTECT AND REPAIR IF DAMAGED.
- ANY AND ALL IMPROVEMENTS, SUCH AS ASPHALT OR CONCRETE PAVEMENT, CURBS, GUTTERS, WALKS, DRAINAGE DITCHES, EMBANKMENTS, SHRUBS, TREES, GRASS SOD, ETC., IF DAMAGED, SHALL BE RESTORED TO ORIGINAL CONDITION.
- EQUIPMENT TYPES SPECIFIED HEREIN (IE "BACKHOE", "SWAMP PLOW" ETC) ARE SUGGESTIONS ONLY AND ARE NOT INTENDED AS REQUIREMENTS. CONTRACTOR WILL BE NOTIFIED AS TO EXPECTATIONS.
- SHORING OF BORE PITS AND TRENCHES IN ACCORDANCE WITH OSHA REGULATIONS IS MANDATORY.
- BURIED CABLE MARKERS WILL BE PLACED AT ALL UNDERGROUND UTILITY LOCATIONS AND ALL OTHER LOCATIONS IN ACCORDANCE WITH THE CONSTRUCTION DRAWINGS AND THE OUTSIDE PLANT HANDBOOK.
- ALL 4" ID CONDUIT WILL BE SCHEDULE 40 (EG. PVC OR GSPRSP), OR AS SPECIFIED.
- UNDERGROUND CONDUIT WILL BE PLACED AT 48" MINIMUM COVER UNLESS OTHERWISE SPECIFIED ON THE CONSTRUCTION DRAWINGS.

### ADDENDUM NOTES: 48 HOUR NOTICE

- CONTRACTOR SHALL NOTIFY ADDISON (48 HOURS) PRIOR TO COMMENCING CONSTRUCTION AND/OR BACKFILLING ANY UTILITIES.
- CONTRACTOR(S) ARE TO CONTACT ADDISON PUBLIC WORKS DEPARTMENT BY PHONE OR EMAIL. ADDISON: DALLAS: (972) 450-2847. DWILDE@ADDISONTX.GOV

DATE: 7/28/2018

ENGINEER: COIBFENDLEY

CHECKED BY: MD

DRAWN BY: PN

REVISIONS

No.	DATE	DESCRIPTION

McMetro

ACCESS TRANSMISSION SERVICES CORPORATION

OUTSIDE PLANT CONSTRUCTION

TITLE: FIBER OPTIC CABLE ROUTE

VERIZON BUSINESS

14911 QUORUM DR ADDISON, TX 75254

HORIZONTAL: NA

VERTICAL: NA

SHEET 04 OF 23

19911 QUORUM DR.DWG

EXCEPT AS MAY BE OTHERWISE PROVIDED BY GOVERNMENT REGULATIONS OR ANY OF THE COMMUNICATIONS SERVICES INC. BOTH FIELD AND OFFICE DRAWINGS ARE TO BE USED FOR ANY REPRODUCTION, COPY, OR USED FOR ANY PURPOSES WITHOUT THE WRITTEN PERMISSION.

# MCI OUTSIDE PLANT FOCUS

## FIBER OPTIC CABLE UNCOVERING SYSTEM

1. THE TITLE OF THIS PROGRAM, **F.O.C.U.S.**, AN ACRONYM FOR "**FIBER OPTIC CABLE UNCOVERING SYSTEM**", WAS SELECTED TO REMIND EVERYONE INVOLVED WITH WORKING NEAR MCI'S ACTIVE FIBER OPTIC SYSTEMS TO FOCUS ON PROTECTING THE FACILITIES. IF, DURING THE COURSE OF THE PROJECT, YOU NOTICE ANY ACTIVITY WHICH MAY JEOPARDIZE THE MCI OSP FACILITIES, IT IS YOUR DUTY TO STOP THE WORK AND RE-F.O.C.U.S.
2. **F.O.C.U.S.** RULES MUST BE FOLLOWED ON ALL MCI PROJECTS INVOLVING WORK ON OR NEAR MCI OSP FACILITIES. SAFETY IS MCI'S NUMBER ONE PRIORITY; EVERYONE MUST REFRAIN FROM UNSAFE AND IMPROPER PRACTICES.
3. REVIEW OF **F.O.C.U.S.** IS MANDATORY AT EVERY PRE-BID, PRE-CONSTRUCTION SITE MEETING AND DAILY TAILGATE MEETING. **F.O.C.U.S.** DISCUSSION MUST INCLUDE SITE-SPECIFIC HISTORY, UNIQUE PROBLEMS, FACILITY CONFIGURATIONS THAT MAY BE ENCOUNTERED, AND PAST ERRORS. "THOSE WHO DO NOT LEARN FROM HISTORY ARE DOOMED TO REPEAT IT;" DO NOT LET THIS HAPPEN TO YOU.
4. ANY WORK NEAR OR REQUIRING HANDLING OF MCI OUTSIDE PLANT FACILITIES CAN ONLY BE PERFORMED WITH AN MCI EMPLOYEE OR CONTRACT REPRESENTATIVE PRESENT – **THIS MEANS OUT OF HIS OR HER VEHICLE AND DIRECTLY MONITORING THE WORK.** THE REPRESENTATIVE MUST HAVE A PROPERLY OPERATING CABLE LOCATOR CHECKED FOR ACCURACY EVERY DAY PRIOR TO COMMENCEMENT OF WORK (COMPARISON OF LINE AND DEPTH READINGS TO ACTUAL LINE AND DEPTH OF THE CABLE).
5. LOCATE AND POT HOLE REQUIREMENTS:
  - PRIOR TO ANY EXCAVATION, THE MCI EMPLOYEE OR CONTRACT REPRESENTATIVE MUST VERIFY THE INITIAL LOCATE MARKS COMPLETED BY MCI OPERATIONS. **DO NOT TRUST LOCATE RESULTS COMPLETED BY OTHERS** THE MCI OR CONTRACT REPRESENTATIVE MUST LOCATE THE CABLE RUNNING LINE BY MAKING AT LEAST ONE PASS IN EACH DIRECTION. LOCATE RESULTS MUST THEN BE COMPARED WITH PREVIOUS MARKS AND THE AS-BUILTS.
  - IF THE PROPOSED WORK INVOLVES DIGGING OR EXCAVATING WITHIN 3 FEET OF THE CABLE, THE CABLE ROUTE WILL BE MARKED CONTINUALLY WITH ORANGE PAINT AND SUPPLEMENTED BY MARKER FLAGS PLACED EVERY 10 FT. THE EXCAVATION CONTRACTOR MUST POT HOLE (ALL POT HOLES MUST BE COMPLETED BY HAND DIGGING OR VACUUM EXCAVATION) A MINIMUM OF EVERY 15 FT., THEN EXPOSE THE ENTIRE LENGTH OF THE CABLE BY HAND DIGGING OR VACUUM EXCAVATION.
  - IF THE PROPOSED WORK INVOLVES DIGGING OR EXCAVATING WITHIN 5 FEET (BUT NOT CLOSER THAN 3 FEET) OF THE CABLE, THE CABLE ROUTE WILL BE MARKED CONTINUALLY WITH ORANGE PAINT AND SUPPLEMENTED BY MARKER FLAGS PLACED EVERY 10 FT. THE EXCAVATION CONTRACTOR MUST POT HOLE THE CABLE A MINIMUM OF EVERY 15 FT.
  - IF THE PROPOSED WORK INVOLVES DIGGING OR EXCAVATING WITHIN 8 FEET (BUT NOT CLOSER THAN 3 FEET) OF THE CABLE, THE CABLE ROUTE WILL BE MARKED CONTINUALLY WITH ORANGE PAINT AND SUPPLEMENTED BY MARKER FLAGS PLACED EVERY 10 FT. THE EXCAVATION CONTRACTOR MUST POT HOLE THE CABLE A MINIMUM OF EVERY 15 FT.
  - THE CABLE WILL ALSO BE POT HOLED AT ANY CHANGE IN THE RUNNING LINE OF MORE THAN 1 FT. IN ANY DIRECTION, ANYTIME THE ACCURACY OF THE ELECTRONIC LOCATE IS QUESTIONED, OR THE MARKED RUNNING LINE DOES NOT MATCH THE AS-BUILTS.
6. EXPOSING REQUIREMENTS:
  - NO MECHANICAL EXCAVATION WITHIN 3 FT. OF OSP FACILITIES WILL BE ALLOWED UNLESS THE FACILITIES HAVE FIRST BEEN PROPERLY LOCATED, POT HOLED, POSITIVELY IDENTIFIED, CONTINUOUSLY EXPOSED BY HAND DIGGING OR VACUUM EXCAVATION, AND THE FACILITIES ARE CLEARLY VISIBLE.
  - IN ADDITION, MECHANICAL EXCAVATION WITHIN 3 FT. OF OSP FACILITIES REQUIRES ON-SITE PRIOR APPROVAL FROM MCI'S EMPLOYEE OR CONTRACT REPRESENTATIVE.
7. PLEASE REFER TO THE LATEST EDITION OF THE MCI OSP HANDBOOK FOR ADDITIONAL DETAILS. KNOW IT AND FOLLOW IT.

## MCI OUTSIDE PLANT CONSTRUCTION GENERAL REQUIREMENTS

- ALL FEDERAL, STATE AND LOCAL SAFETY REGULATIONS MUST BE FOLLOWED WITHOUT EXCEPTION.
- PERSONAL PROTECTIVE EQUIPMENT APPROPRIATE FOR THE SPECIFIC WORK SITE SHALL BE USED AT ALL TIMES. AT A MINIMUM, HARD HAT, SAFETY SHOES/STEEL-TOED BOOTS, AND FLORESCENT ORANGE OR GREEN WORK VEST ARE REQUIRED UPON ENTERING ANY MCI WORK SITE.
- USE OF INTOXICANTS, DRUGS, INHALANTS OR ANY OTHER SUBSTANCES THAT MAY IMPAIR ALERTNESS ARE STRICTLY PROHIBITED.
- CONTRACTORS ARE NOT ALLOWED TO CUT ANY CABLE. CABLES SCHEDULED FOR REMOVAL WILL BE CUT BY MCI OPERATIONS PERSONNEL, AND ONLY AFTER VERIFICATION THAT ALL TRAFFIC HAS BEEN OFF-LOADED.
- EXTREME CAUTION MUST BE USED AT ALL TIMES WHEN WORKING ON OR NEAR ACTIVE CABLES. AN MCI EMPLOYEE OR CONTRACT REPRESENTATIVE MUST APPROVE AND BE PRESENT PRIOR TO AND DURING ALL CABLE HANDLING ACTIVITIES.
- TOOLS AND EQUIPMENT SPECIFICALLY DESIGNED FOR THE JOB AT HAND ARE REQUIRED. USE THE PROPER TOOL FOR THE JOB.
- CONDUIT WORK INVOLVING ACTIVE CABLES REQUIRES SPECIALIZED TOOLS SPECIFICALLY DESIGNED TO ACCESS DUCTS WITH ACTIVE CABLES.
- PROTECTING MCI FACILITIES IS EXTREMELY IMPORTANT; HOWEVER, SAFETY REGARDING YOURSELF AND OTHERS IS THE MOST IMPORTANT PART OF ANY PROJECT.



SOUTHERN GLAZERS  
WINE AND SPIRITS

CLARIFICATION NO. QUANTITY

McIntere  
ACCESS TRANSMISSION SERVICES  
OUTSIDE PLANT CONSTRUCTION  
TITLE: FIBER OPTIC CABLE ROUTE  
VERIZON BUSINESS  
14911 QUORUM DR ADDISON, TX 75254

DATE: 7/28/2018  
ENGINEER: CORBFENDLEY  
CHECKED BY: MO  
DRAWN BY: PN

REVISIONS

No.	DATE	DESCRIPTION	BY

EXCEPT AS MAY BE OTHERWISE PROVIDED BY THE CONTRACT DOCUMENTS, THIS DRAWING SHALL REMAIN THE PROPERTY OF MCI COMMUNICATIONS SERVICES INC. BOTH BEFORE AND AFTER THE COMPLETION OF THE PROJECT. IT IS NOT TO BE REPRODUCED, COPIED, OR USED FOR ANY PURPOSE WITHOUT THE EXPRESS WRITTEN PERMISSION OF MCI COMMUNICATIONS SERVICES INC.

SCALE NA NA

HORIZONTAL: NA NA

VERTICAL: NA NA

SHEET 05 OF 23

19111 QUORUM DR LMS










# 30" x 60" x 30" STANDARD HANDHOLE DETAILS



SOUTHERN GLAZERS  
WINE AND SPIRITS

CLARIFICATION NO. QUANTITY

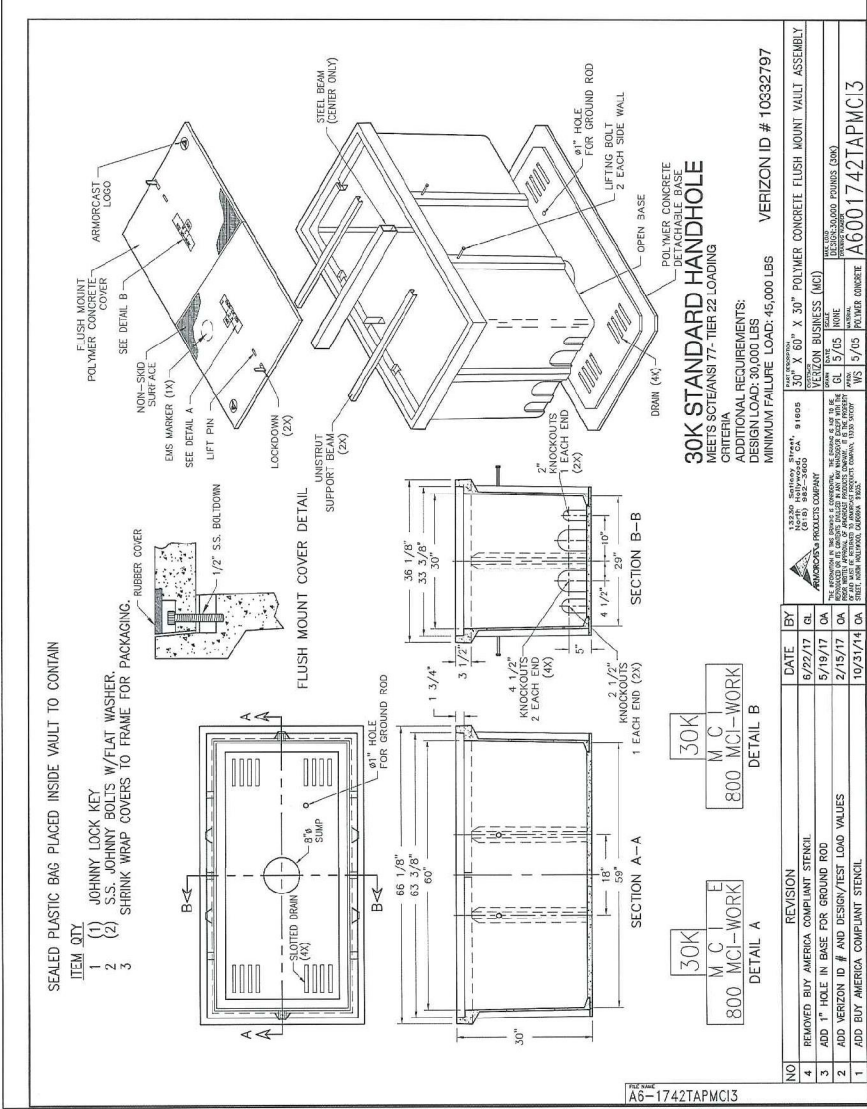
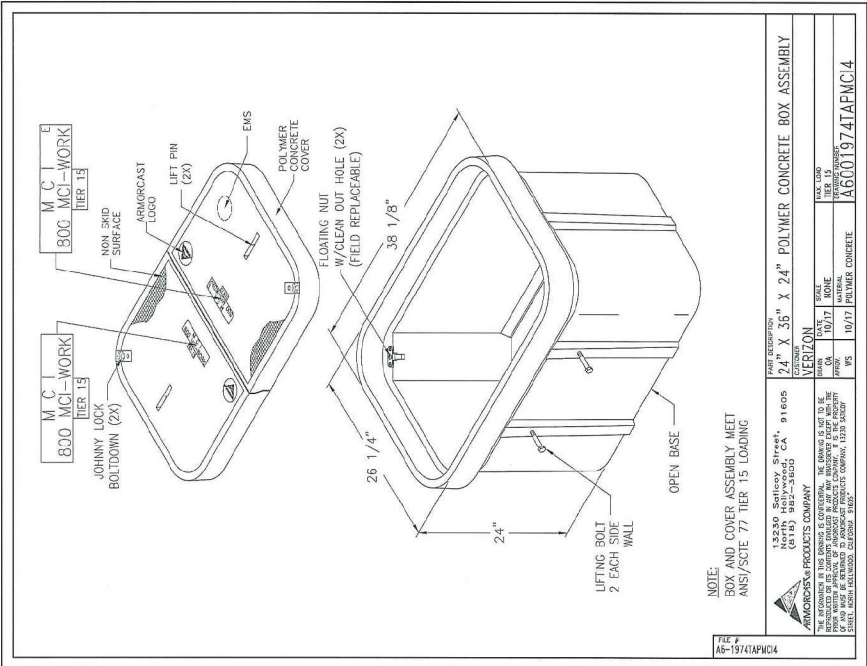
McMetro  
ACCESS TRANSMISSION SERVICES CORPORATION  
OUTSIDE PLANT CONSTRUCTION  
TITLE: FIBER OPTIC CABLE ROUTE  
VERIZON BUSINESS  
14911 QUORUM DR ADDISON, TX 75254

DATE: 7/26/2018  
ENGINEER: COBBFENDLEY  
CHECKED BY: MD  
DRAWN BY: PN

REVISIONS

BY DATE DESCRIPTION

SCALE NA  
HORIZONTAL: NA  
VERTICAL: NA  
SHEET 09 OF 23  
1911 QUORUM DR DWS

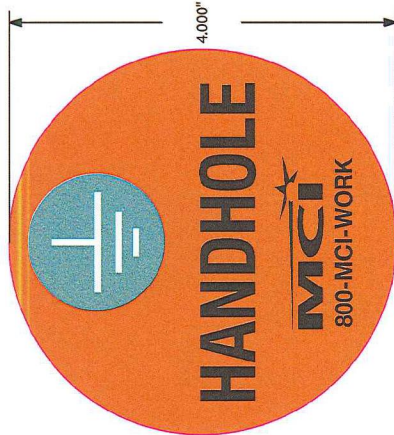


NO	REVISION	DATE	BY
4	REMOVED BUY AMERICA COMPLIANT STENCIL	6/22/17	CL
3	ADD 1" HOLE IN BASE FOR GROUND ROD	5/18/17	DA
2	ADD VERIZON ID # AND DESIGN/TEST LOAD VALUES	2/15/17	DA
1	ADD BUY AMERICA COMPLIANT STENCIL	10/23/14	DA

NO	REVISION	DATE	BY
1	REMOVED BUY AMERICA COMPLIANT STENCIL	10/23/14	DA

NO	REVISION	DATE	BY
4	REMOVED BUY AMERICA COMPLIANT STENCIL	6/22/17	CL
3	ADD 1" HOLE IN BASE FOR GROUND ROD	5/18/17	DA
2	ADD VERIZON ID # AND DESIGN/TEST LOAD VALUES	2/15/17	DA
1	ADD BUY AMERICA COMPLIANT STENCIL	10/23/14	DA

# CURB MARKER DETAILS



magenta = die line does not print.

**Part #:** VB-MCI-HANDHOLE-GREEN-ORANGE  
**File:** VER-VB-MCI-HANDHOLE-GREEN-ORANGE-A.ai  
**Date:** 04/13/18  
**Proof:** A  
**Colors:** PMS 152 ORANGE, BLACK AND PMS 3415 GREEN  
**Size:** 4" Circle  
**Scale:** 100%  
**Const.:** 15 Mil PVC base, with Durable Dorring  
**Quote #:**  
**Artist:** SCL  
**QC:**

**FRICK & COMPANY**  
 W J L L A M  
 Innovations in Identification  
 (847) 916-3700 • frick@ac (847) 918-2701

For Plate or Die Ordering  
 APPROVED AS IS  
 APPROVED WITH CORRECTIONS  
 CORRECTED PROOF REQUESTED

Signature: \_\_\_\_\_ Date: \_\_\_\_\_

**NOTE:** This is a proof of your artwork. Please review the text size, color, spelling, and location for errors. Your receipt of your approval, your order will be printed according to this proof. Your order cannot be processed further until approval is received. No credit will be given for product which conforms to this proof.

### Applications

Utility Labeling, Non-critical Safety/ Warning decals, Harsh Environments, Outdoor Use, Ground Level Marking, Utility Markers and Signs

### Material Description

Engineering Grade UV-Stable Plastic

Choice of reflective or non-reflective materials. Custom colors are available upon request.

Standard Size	2.5, 3, 4 or 6 inch diameter dome
Thickness	10-30 mil base plastic with 60 mil urethane
Expected Outdoor Durability	Up to 30 years with minimum fading
Service Temperature Range	-40°F to 185°F
Available Colors	Blue, Green, Red, Purple, Yellow, Orange or Custom
INK Colors	Standard is UV-stable Black
Water Resistance	Excellent
Solvents Resistance	Excellent
UV Resistance	Excellent
Abrasion Resistance	Excellent

### Adhesive

PS-800/ SB-12 Permanent Adhesive

Adhesive sold separately

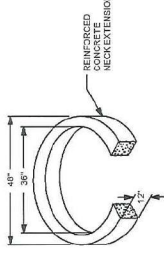
Type	All-Purpose Permanent Adhesive
Thickness	Apply to back at 0.125 inch thickness
Application Temperature	0 to 100°F
Service Temperature	-40°F to 120°F
Permanently bonds to	Wood, plywood, concrete, metals, brick, gypsum, plaster

### Shelf life

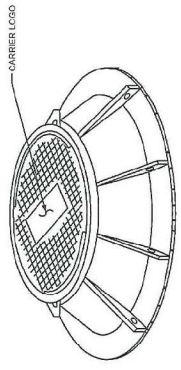
Stored at 70°F/55% Relative Humidity  
 The William Frick Curb Marker is completely stable at room temperature.

# 4'X4'X4' OR 4'X4'X2' MANHOLE DETAILS

TYPICAL DETAIL "A"  
TYPICAL NECK EXTENSION DETAIL

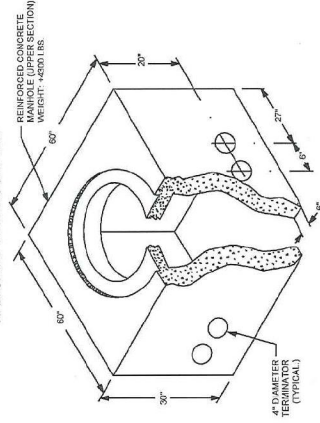


TYPICAL DETAIL "B"  
MANHOLE COVER IRONWORKS #B-30

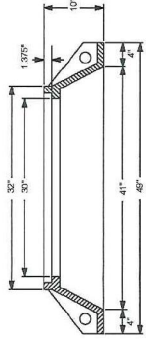


- NOTES:
- EACH COVER TO HAVE (4) 1/2" STAMP CARRIER'S ID IN COVER.
  - ACCESS HOLE: 3"

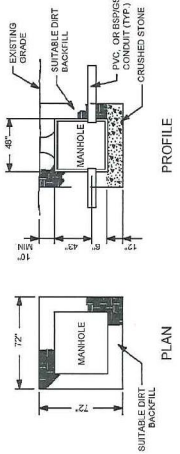
TYPICAL DETAIL "D"  
DALWORTH QUICKSET MANHOLE  
WALLS: 8in. HEADROOM: 48in.



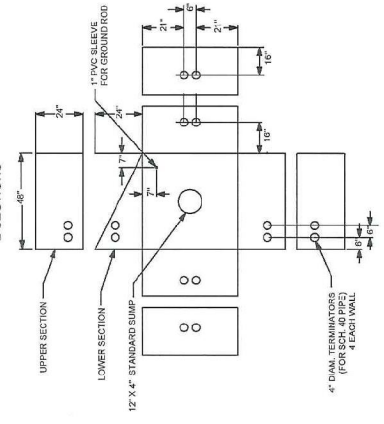
TYPICAL DETAIL "E"  
RING AND COVER DETAIL  
RING: 300lbs. COVER: 300lbs.



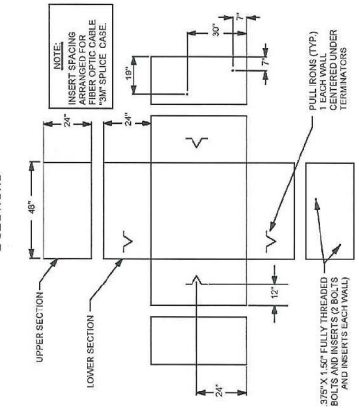
TYPICAL DETAIL "G"  
TYPICAL MANHOLE EXCAVATION PIT



TYPICAL DETAIL "C"  
TERMINATORS, SUMP, & GROUND ROD SLEEVE  
2 SECTIONS



TYPICAL DETAIL "F"  
BOLT INSERTS AND PULL IRONS  
2 SECTIONS



- NOTES:
- VOID IN EXCAVATED AREAS TO BE BACKFILLED WITH SELECT MATERIAL.
  - VOID IN UNEXCAVATED PIT TO BE BACKFILLED WITH 1/2" OF CRUSHED STONE (3/4" GRADE).
  - SHORING SHALL BE REQUIRED.
  - ALL IRONWORKS SHALL BE PLACED WITH COVER FLUSH WITH EXISTING GRADE.

SOUTHERN GLAZERS  
WINE AND SPIRITS

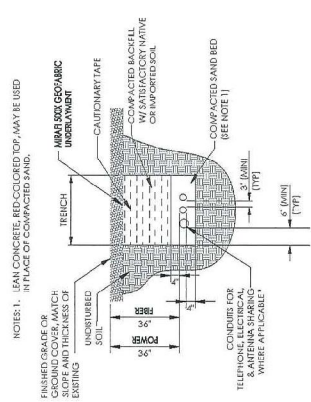
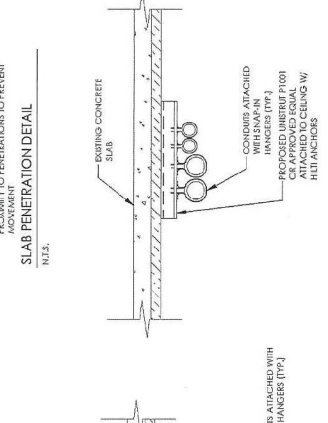
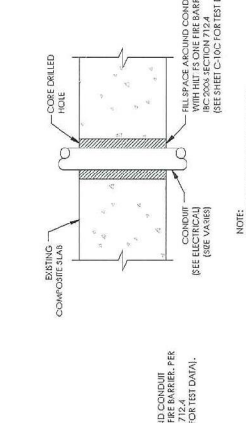
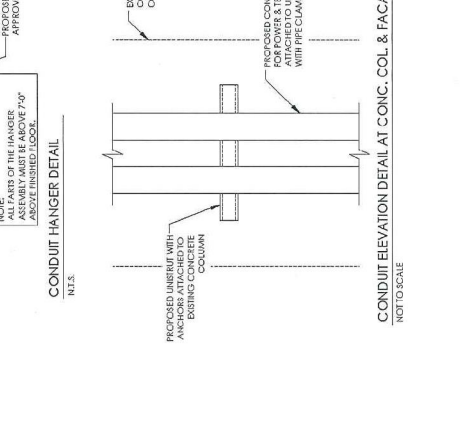
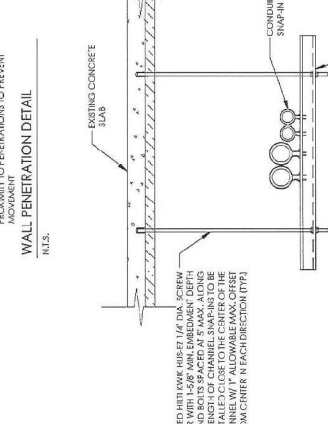
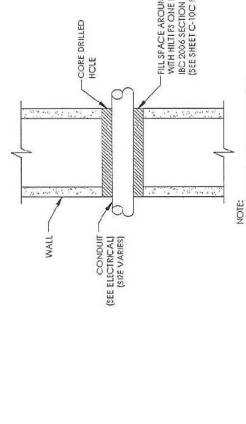
**CLARIFICATION NO.** QUANTITY

McMetro  
ACCESS TRANSMISSION SERVICES CORPORATION  
OUTSIDE PLANT CONSTRUCTION  
TITLE: FIBER OPTIC CABLE ROUTE  
14911 QUORUM DR ADDISON, TX 75254

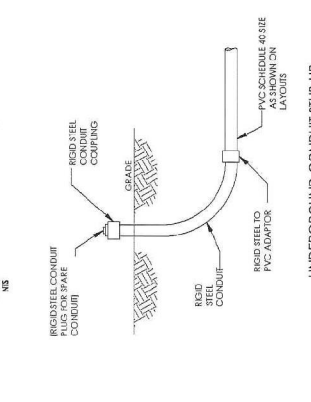
DATE: 7/30/2018  
ENGINEER: CORBFENDLEY  
CHECKED BY: MD  
DRAWN BY: PN  
REVISIONS

SCALE NA  
HORIZONTAL: NA  
VERTICAL: NA  
SHEET 12 OF 23  
1911 QUORUM DR DWG

# CONDUIT DETAILS



\* CONDUIT SIZE, TYPE, QUANTITY AND SEPARATION SHALL BE DETERMINED WITH LOCAL UTILITY COMPANY REQUIREMENTS.



EXCEPT AS MAY BE OTHERWISE PROVIDED BY CONTRACT, THESE DRAWINGS ARE THE PROPERTY OF VERIZON COMMUNICATIONS SERVICES INC. BOTH BEFORE AND AFTER THE MAKING HEREOF. ANY REPRODUCTION, COPIED, OR USED FOR ANY PURPOSES WITHOUT THE WRITTEN PERMISSION OF VERIZON COMMUNICATIONS SERVICES INC. SHALL BE SUBJECT TO THE PROPERTIES OF THIS FIRM.

# HILTI FIRE FS-ONE HIGH PERFORMANCE PRODUCT DETAILS

**verizonbusiness**

SOUTHERN GLAZERS  
WINE AND SPIRITS

CLARIFICATION NO. QUANTITY

ACCESS TRANSMISSION SERVICES CORPORATION  
McIntire  
OUTSIDE PLANT CONSTRUCTION  
TITLE: FIBER OPTIC CABLE ROUTE  
VERIZON BUSINESS  
14911 QUORUM DR ADDISON, TX 75254

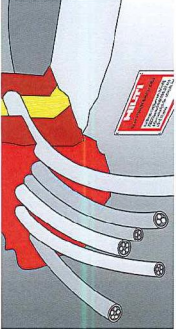
DATE: 7/30/2018  
ENGINEER: COBBFENDLEY  
CHECKED BY: MD  
DRAWN BY: PN

REVISIONS

No. | DATE | DESCRIPTION | BY

SCALE: NA  
HORIZONTAL: NA  
VERTICAL: NA  
SHEET 13 OF 23  
19111 QUORUM DR DWS

**HILTI** **Product Information**



**FS-ONE High Performance Intumescent Firestop Sealant**

**Product description**

- Intumescent (expands when exposed to fire) firestop sealant that helps protect combustible and non-combustible penetrations for up to 4 hours fire rating

**Product features**

- Smoke, gas and water resistant after material has cured
- Contains no isocyanate, solvents or asbestos
- High strength and high modulus
- Water based, 100% solids
- Protects most typical firestop penetration applications
- Painable
- Single component systems available
- Meets LEED™ requirements for indoor environmental quality credit 4.1 Low Emitting Materials, Sealants and Adhesives and 4.2 Paints and Coatings

**Areas of application**

- Steel, copper and EMT pipes
- Insulated steel and copper pipes
- Cable bundles
- Chased or vented plastic pipes
- RVC penetrations

**For use with**

- Concrete, masonry, drywall and wood floor assemblies
- Wall and floor assemblies rated up to 4 hours

**Examples**

- Sealing around combustible pipe penetrations in fire rated construction
- Sealing around non-combustible penetrations in fire rated construction

**Installation instructions for FS-ONE**

- Before handling, read Material Safety Data Sheet and product label for safe usage and health information.
- Before use, always pre-heat FS-ONE to 80°F (27°C) to allow for optimal application. Always refer to the applicable drawing in the UL Fire Resistance Directory or Hilti Firestop Systems Guide for complete installation information.
- Preparation: Surfaces to which FS-ONE will be applied should be cleaned of loose debris, dirt, oil, moisture, frost and wax. Structures supporting penetrations should be supported in accordance with local building and electrical codes.
- Application of firestop sealant:
  - Install the prescribed backfilling material type and depth to obtain the desired rating (if required). Leave sufficient depth for applying FS-ONE.
  - Apply FS-ONE to the required depth in order to obtain the desired fire rating.

Make sure FS-ONE contains all additives to provide proper consistency. FS-ONE is available in standard troweling gun, tall back gun, bulk loader and bulk gun. With FS-ONE bulk loader, Genco type sealant pump may be used. Contact pump manufacturer for proper assembly.

**Not for use**

- For permanent expansion joints
- Underwater

**Storage**

- For maximum shelf life, store in original packaging in a cool, dry location protected from moisture at temperatures between 40°F (5°C) and 80°F (20°C)
- Observe expiration date on the packing

**On-site handling and application:**

- On-site, use a smooth spatula, trowel, or other tool to apply FS-ONE to the penetration.
- Apply FS-ONE to the penetration, ensuring a smooth surface.
- Apply FS-ONE to the penetration, ensuring a smooth surface.
- Apply FS-ONE to the penetration, ensuring a smooth surface.
- Apply FS-ONE to the penetration, ensuring a smooth surface.
- Apply FS-ONE to the penetration, ensuring a smooth surface.

**Technical Data\***

Chemical basis: Water-based, solvent acrylic emulsion

Color: Red

Application temperature: 40°F to 104°F (5°C to 40°C)  
Approx. 20-30 min.

Skin forming time: Approx. 2 mm / 3 days

Curing time: 24.1%

Average volume shrinkage: Approx. 5%

Expansion rate (unrestricted): Up to 2-5 times original volume

Temperature resistance (cured): -40°F to 212°F (-40°C to 100°C)

Surface burning characteristics: Flame Spread 0  
Smoke Development 5  
(ASTM E 84-08)

UL classification: 90 (relative to specific construction)  
(ASTM E 813-08)

Treated in accordance with:  
• UL 1479 • ASTM E 84 • ASTM G21  
\*At 73°F (23°C) and 50% relative humidity

**UL LISTED** FOR USE IN THROUGH-PENETRATION APPLICATIONS TO MEET A FIRE RESISTANCE RATING

**FM APPROVED** FULLY COMPLIANT MATERIAL FOR USE IN THROUGH-PENETRATION APPLICATIONS TO MEET A FIRE RESISTANCE RATING

**FBC APPROVED** FOR THROUGH-PENETRATION APPLICATIONS TO MEET A FIRE RESISTANCE RATING

**REVISIONS**

No. | DATE | DESCRIPTION | BY

**Hilti. Outperform. Outlast.**  
Hilti, Inc. (U.S.) 1-800-979-5000 • www.us.hilti.com • en español 1-800-679-5000 • Hilti Firestop Systems Guide

# CONDUIT SPECIFICATIONS



SOUTHERN GLAZERS  
WINE AND SPIRITS

CLARIFICATION NO. QUANTITY


Mcmetro  
ACCESS TRANSMISSION SERVICES  
CORPORATION  
OUTSIDE PLANT CONSTRUCTION  
TITLE: FIBER OPTIC CABLE ROUTE  
VERIZON BUSINESS  
14911 QUORUM DR ADDISON, TX 75254

DATE: 7/30/2018  
ENGINEER: COBBFENDLEY  
CHECKED BY: MD  
DRAWN BY: PN

No.	DATE	DESCRIPTION	BY

EXCEPT AS MAY BE OTHERWISE PROVIDED BY CONTRACT, THESE DRAWINGS OR ANY PART THEREOF SHALL BE VOID WITHOUT THE SIGNATURE AND SEAL OF THE COMMUNICATIONS SERVICES INC. BOTH ORIGINAL AND COPIES. THESE DRAWINGS SHALL BE USED ONLY FOR THE REPRODUCTION, COPYING, OR USED FOR ANY PURPOSE THROUGHOUT THE UNITED STATES.

SCALE: NA  
HORIZONTAL: NA  
VERTICAL: NA  
SHEET 14 OF 23  
14911 QUORUM DR DWS

**EMT Factory Elbows - 45°**

**Calconduit™**  
Rigid Conduit, Rigid & EMT Fittings

**Application:**  
EMT elbows are to be installed on conduit raceways for the interconnection of conduit runs and other fittings.

**Features:**  
Fabricated from UL Listed Electrical Metallic Tubing (EMT)

**Certifications and Compliances:**

- UL & CUL Listed
- UL File Number E315441
- UL797 with statements of conformance
- ANSI C803
- National Electrical Code® 2008 - Article 358
- A.R.P.A. Available
- Federal Specification WW-C-593\*

**Options:**  
Available in any degree of bend from 5° to 90°, and special radius

EMT SPECIAL RADIUS 45° SWEEP DETAIL  
NFS

**EMT Factory Elbows - 90°**

**Calconduit™**  
Rigid Conduit, Rigid & EMT Fittings

**Application:**  
EMT elbows are to be installed on conduit raceways for the interconnection of conduit runs and other fittings.

**Features:**  
Fabricated from UL Listed Electrical Metallic Tubing (EMT)

**Certifications and Compliances:**

- UL & CUL Listed
- UL File Number E315441
- UL797 with statements of conformance
- ANSI C803
- National Electrical Code® 2008 - Article 358
- A.R.P.A. Available
- Federal Specification WW-C-593\*

**Options:**  
Available in any degree of bend from 5° to 90°, and special radius

EMT SPECIAL RADIUS 90° SWEEP DETAIL  
NFS



# TRAFFIC CONTROL LAYOUT



SOUTHERN GLAZERS  
WINE AND SPIRITS

CLARIFICATION NO.	QUANTITY

Metro  
ACCESS TRANSMISSION SERVICES CORPORATION

OUTSIDE PLANT CONSTRUCTION

TITLE: FIBER OPTIC CABLE ROUTE  
VERIZON BUSINESS  
14911 QUORUM DR ADDISON, TX 75254

DATE: 7/30/2018  
ENGINEER: COBBENDELY  
CHECKED BY: MD  
DRAWN BY: PN

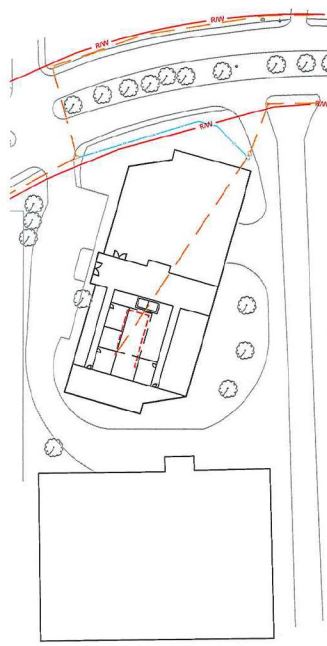
REVISIONS

No.	DATE	DESCRIPTION	BY

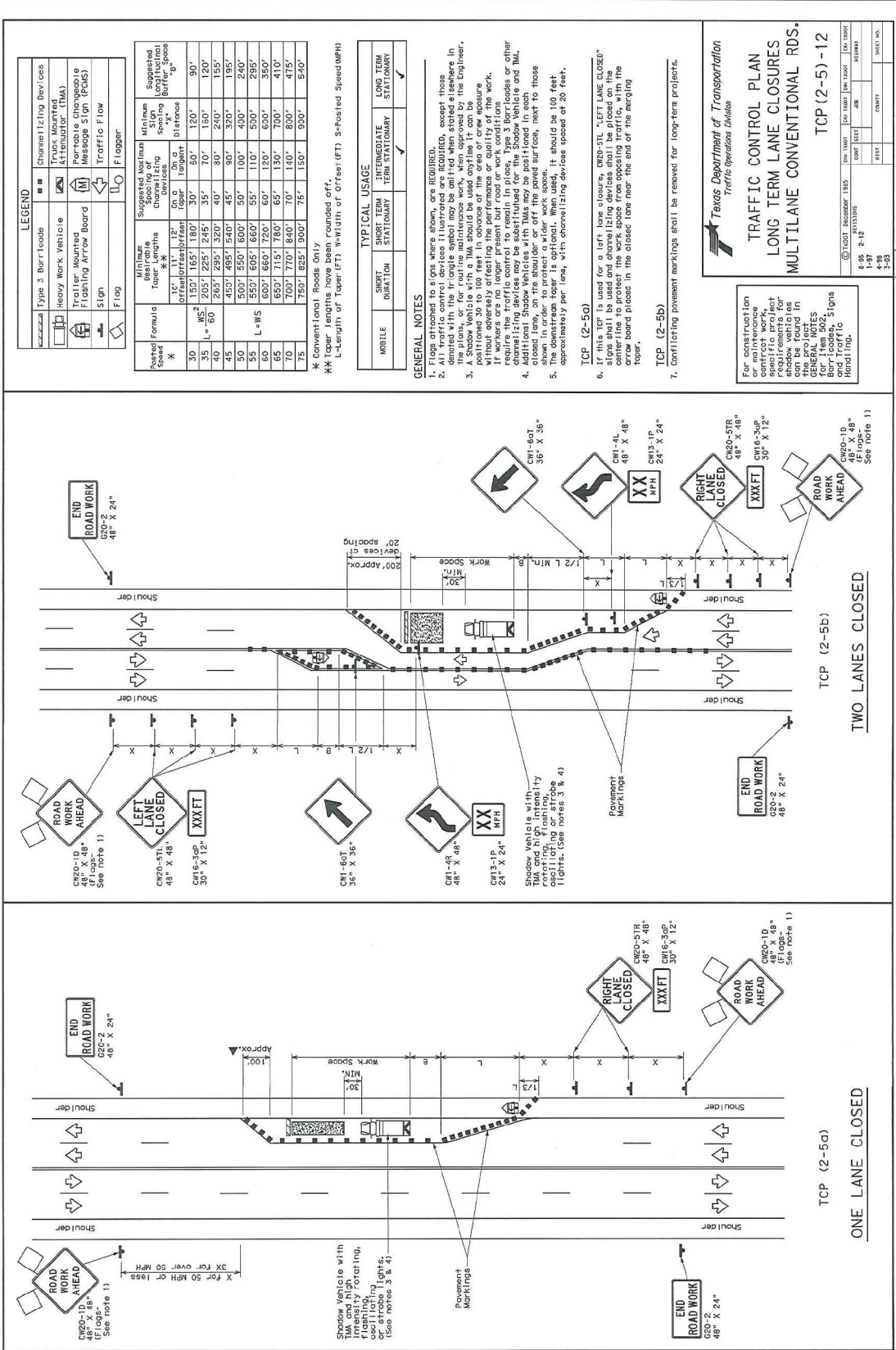
EXCEPT AS MAY BE OTHERWISE PROVIDED BY CONTRACT, THESE DRAWINGS AND SPECIFICATIONS ARE THE PROPERTY OF VERIZON BUSINESS AND SHALL REMAIN THE PROPERTY OF VERIZON BUSINESS. COMMUNICATIONS SERVICES AND BOTH BEING REPRODUCED, COPIED, OR USED FOR ANY PURPOSE WITHOUT THE WRITTEN PERMISSION OF VERIZON BUSINESS.

SCALE: NA  
HORIZONTAL: NA  
VERTICAL: NA  
SHEET 15 OF 23

14911 QUORUM DR DWS



ROADWAY	TCP	POSTED SPEED	LANE OFFSET	MIN. TAPER LENGTH	SPACING CHANNELIZING DEVICES		MIN. SIGN SPACING	BUFFER SPACE
					ON TAPER	ON TANGENT		
QUORUM DR	TCP (2-5)	30 MPH	12'	180'	30'	60'	120'	90'



DATE: FILE:  
DISCLAIMER:  
The use of this standard is governed by the Texas Engineering Practice Act, and no liability is assumed by the provider of this standard for its use.

LEGEND

Type 3 Burr Toes	Channelizing Devices
Heavy Work Vehicle	Truck Mounted Attenuator (TMA)
Trailer Mounted Attenuator (TMA)	Message Sign (MSS)
Flashing Arrow Board	Message Sign (MSS)
Sign	Traffic Flow
Flag	Flagger

Requester	Formula	Minimum Taper Lengths (ft)	Suggested Minimum Channelizing Spacing (ft)	Minimum Spacing (ft)	Suggested Functional Spacing (ft)
X	$1.1 \sqrt{L}$	12'	On 0'	0'	100'
50	$1.1 \sqrt{L}$	12'	On 0'	0'	100'
35	$1.1 \sqrt{L}$	12'	On 0'	0'	100'
40	$1.1 \sqrt{L}$	12'	On 0'	0'	100'
45	$1.1 \sqrt{L}$	12'	On 0'	0'	100'
50	$1.1 \sqrt{L}$	12'	On 0'	0'	100'
55	$1.1 \sqrt{L}$	12'	On 0'	0'	100'
60	$1.1 \sqrt{L}$	12'	On 0'	0'	100'
65	$1.1 \sqrt{L}$	12'	On 0'	0'	100'
70	$1.1 \sqrt{L}$	12'	On 0'	0'	100'
75	$1.1 \sqrt{L}$	12'	On 0'	0'	100'

\* Conventional Roads Only  
\*\* Taper lengths have been rounded off.  
L=Length of Taper (FT) W=Width of Officer (FT) S=Posted Speed (MPH)

MOBILE	STATIONARY	STATIONARY	STATIONARY
✓	✓	✓	✓

- GENERAL NOTES
- Flags attached to signs where shown, are REQUIRED.
  - Signs for right-of-way maintenance work, when approved by the Engineer, shall be placed on the work zone in accordance with the specifications of the contract.
  - Signs shall be placed on the work zone in accordance with the specifications of the contract.
  - Additional Shadow Vehicles with TMA may be substituted for the Shadow Vehicle and TMA. Shadow Vehicle with TMA shall be placed in each lane approximately 20 feet in advance of the Shadow Vehicle and TMA. The downstream taper is optional. When used, it should be 100 feet approximately per lane, with channelizing devices spaced at 20 feet.
  - Shadow Vehicle with TMA and high intensity flashing lights shall be placed in each lane approximately 20 feet in advance of the Shadow Vehicle and TMA. The downstream taper is optional. When used, it should be 100 feet approximately per lane, with channelizing devices spaced at 20 feet.

TCP (2-5a)  
TCP (2-5b)

For construction on highway, use the following signs and pavement markings as shown on this plan. The signs shall be placed on the work zone in accordance with the specifications of the contract. The signs shall be placed on the work zone in accordance with the specifications of the contract.

GENERAL NOTES:  
For construction on highway, use the following signs and pavement markings as shown on this plan. The signs shall be placed on the work zone in accordance with the specifications of the contract.

Texas Department of Transportation  
Traffic Operations Division

TRAFFIC CONTROL PLAN  
LONG TERM LANE CLOSURES  
MULTILANE CONVENTIONAL RDS.  
TCP (2-5)-12

6-95	2-12	1-87	4-98	1-87	1-87	1-87
DATE	REVISION	DATE	REVISION	DATE	REVISION	DATE



verizonbusiness

SOUTHERN GLAZERS  
WINE AND SPIRITS

CLARIFICATION NO.	QUANTITY
1	
240	802'
410	600'
600'	202'
281	36" SF

McMetro  
ACCESS TRANSMISSION SERVICES CORPORATION  
OUTSIDE PLANT CONSTRUCTION  
TITLE: FIBER OPTIC CABLE ROUTE  
VERIZON BUSINESS  
14911 QUORUM DR ADDISON, TX 75254

DATE: 7/20/2015  
ENGINEER: COBBFENDELY  
CHECKED BY: MD  
DRAWN BY: PN

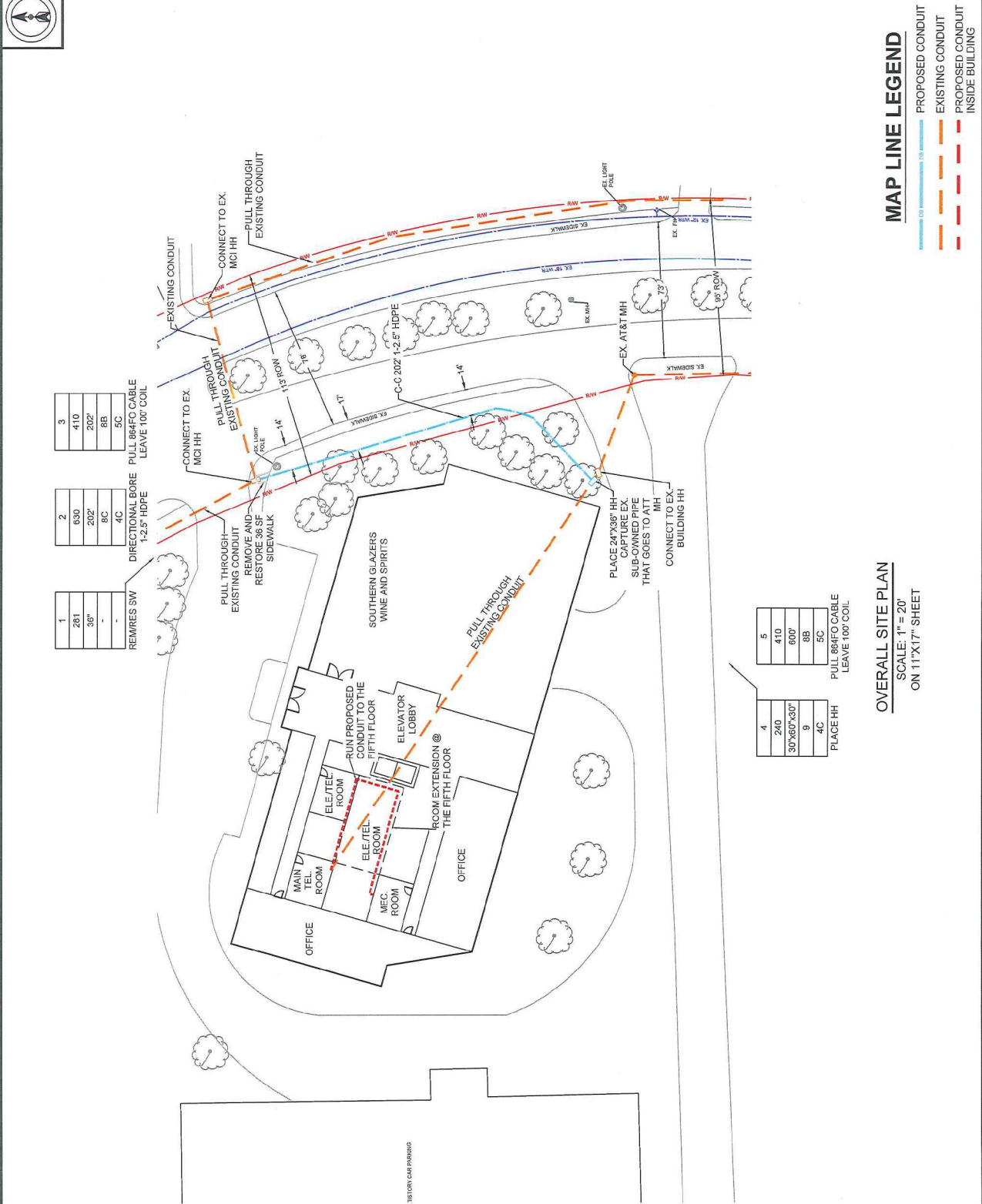
NO.	DATE	DESCRIPTION	BY

REVISIONS

SCALE: 20'

HORIZONTAL: NA  
VERTICAL: NA  
SHEET 17 OF 23  
14911 QUORUM DR.DWG

EXCEPT AS MAY BE OTHERWISE PROVIDED BY CONTRACT, THESE DRAWINGS AND SPECIFICATIONS ARE THE PROPERTY OF VERIZON BUSINESS COMMUNICATIONS SERVICES AND NO PART HEREOF IS TO BE REPRODUCED, COPIED, OR USED FOR ANY PURPOSE WITHOUT EXPRESS WRITTEN PERMISSION.



**MAP LINE LEGEND**

SCALE: 20'

HORIZONTAL: NA  
VERTICAL: NA  
SHEET 17 OF 23  
14911 QUORUM DR.DWG

**OVERALL SITE PLAN**  
SCALE: 1" = 20'  
ON 11"X17" SHEET

1	2	3
281	630	410
36"	202'	202'
-	9C	8B
-	4C	5C

REMPRES SW  
DIRECTIONAL BORE  
1-2.5' HDPE  
PULL 864FO CABLE  
LEAVE 100' COIL

PULL THROUGH  
EXISTING CONDUIT  
REMOVE AND  
RESTORE 36 SF  
SIDEWALK

CONNECT TO EX  
MCI HH

PULL THROUGH  
EXISTING CONDUIT

CONNECT TO EX  
MCI HH

PULL THROUGH  
EXISTING CONDUIT

CONNECT TO EX  
MCI HH

PULL THROUGH  
EXISTING CONDUIT

CONNECT TO EX  
MCI HH

PULL THROUGH  
EXISTING CONDUIT

CONNECT TO EX  
MCI HH

PULL THROUGH  
EXISTING CONDUIT

CONNECT TO EX  
MCI HH

PULL THROUGH  
EXISTING CONDUIT

CONNECT TO EX  
MCI HH

PULL THROUGH  
EXISTING CONDUIT

CONNECT TO EX  
MCI HH

PULL THROUGH  
EXISTING CONDUIT

CONNECT TO EX  
MCI HH

PULL THROUGH  
EXISTING CONDUIT

CONNECT TO EX  
MCI HH

PULL THROUGH  
EXISTING CONDUIT

CONNECT TO EX  
MCI HH

PULL THROUGH  
EXISTING CONDUIT

CONNECT TO EX  
MCI HH

PULL THROUGH  
EXISTING CONDUIT

CONNECT TO EX  
MCI HH

PULL THROUGH  
EXISTING CONDUIT

CONNECT TO EX  
MCI HH

PULL THROUGH  
EXISTING CONDUIT

CONNECT TO EX  
MCI HH

PULL THROUGH  
EXISTING CONDUIT

CONNECT TO EX  
MCI HH

PULL THROUGH  
EXISTING CONDUIT

CONNECT TO EX  
MCI HH

4	5
240	410
30"X60"X30"	600'
9	8B
4C	5C

PLACE HH  
PULL 864FO CABLE  
LEAVE 100' COIL

PLACE 24"X36" HH  
SUB-OWNED PIPE  
CAPTURE EX  
THAT GOES TO MH  
CONNECT TO EX  
BUILDING HH

PULL THROUGH  
EXISTING CONDUIT

CONNECT TO EX  
BUILDING HH

PULL THROUGH  
EXISTING CONDUIT

CONNECT TO EX  
BUILDING HH

PULL THROUGH  
EXISTING CONDUIT

CONNECT TO EX  
BUILDING HH

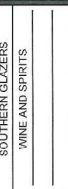
PULL THROUGH  
EXISTING CONDUIT

CONNECT TO EX  
BUILDING HH

PULL THROUGH  
EXISTING CONDUIT

CONNECT TO EX  
BUILDING HH

**FIRST FLOOR**  
OUTSIDE THE BUILDING



SOUTHERN GLAZERS  
WINE AND SPIRITS

CLARIFICATION NO.	QUANTITY

Mcmetro  
ACCESS TRANSMISSION SERVICES CORPORATION

OUTSIDE PLANT CONSTRUCTION

TITLE: FIBER OPTIC CABLE ROUTE  
14911 QUORUM DR ADDISON, TX 75254

DATE: 7/26/2018  
ENGINEER: CORRINDLEY  
CHECKED BY: MD  
DRAWN BY: PN

No.	DATE	DESCRIPTION	BY

EXCEPT AS MAY BE OTHERWISE PROVIDED BY THE SPECIFICATIONS AND CONTRACT DOCUMENTS, ALL WORK SHALL BE IN ACCORDANCE WITH THE LATEST EDITION OF THE NATIONAL ELECTRICAL CODE (NEC) AND THE NATIONAL COMMUNICATIONS SERVICES INC. BOTH BEING ADOPTED BY THE STATE OF TEXAS. ALL MATERIALS SHALL BE NEW UNLESS OTHERWISE SPECIFIED. REVISIONS WILL BE MADE AS NECESSARY. THIS DRAWING IS THE PROPERTY OF MCMETRO AND IS NOT TO BE REPRODUCED, COPIED, OR USED FOR ANY PURPOSE WITHOUT THE WRITTEN PERMISSION.

SCALE NA NA  
HORIZONTAL: NA NA  
VERTICAL: NA NA  
SHEET 18 OF 23  
14911 QUORUM DR.PWG

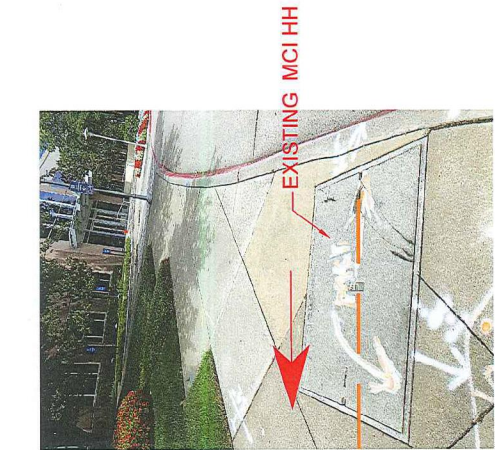


PHOTO: SB QUORUM BY THE ENTRANCE OF 14911 QUORUM PARKING LOT

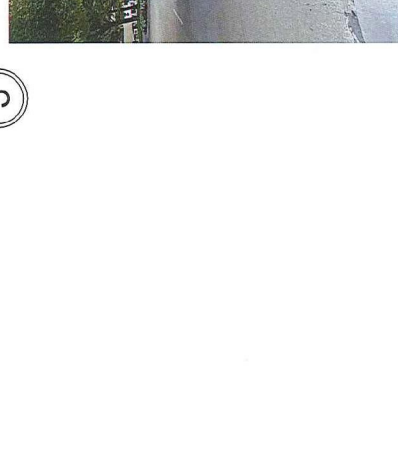


PHOTO: SB QUORUM TOWARD AT&T MH THEN TO THE MAIN TELEPHONE ROOM



PHOTO: SB QUORUM TOWARD AT&T MH

**MAP LINE LEGEND**

- PROPOSED CONDUIT
- EXISTING CONDUIT

②

③

①



FIRST FLOOR  
ELECTRICAL/TELEPHONE ROOM

1

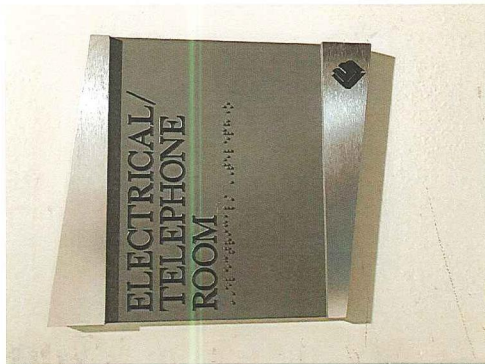


PHOTO: ELECTRICAL/TELEPHONE ROOM @ 1ST FLOOR

2



PHOTO: FROM MAIN TELEPHONE ROOM TO ELECTRICAL/TELEPHONE ROOM @ 1ST FLOOR

3

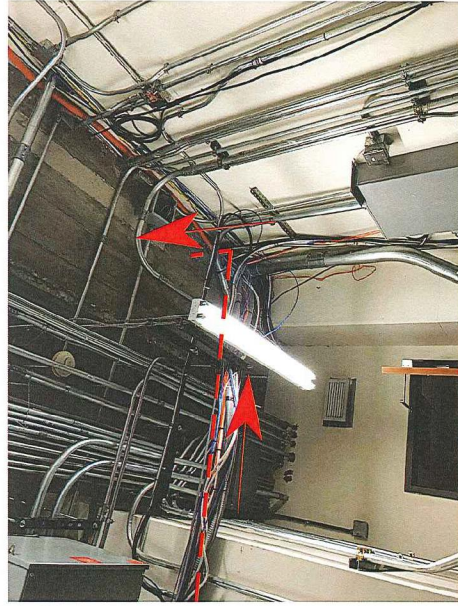


PHOTO: FROM ELECTRICAL/TELEPHONE ROOM TO THE 2ND FLOOR

REVISIONS	
No.	DESCRIPTION

MAP LINE LEGEND



**SECOND FLOOR**  
ELECTRICAL/TELEPHONE ROOM

1

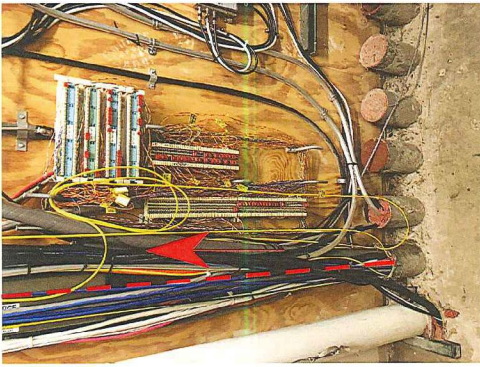


PHOTO: AT THE SECOND FLOOR  
ELECTRICAL/TELEPHONE ROOM  
FROM THE FIRST FLOOR

**THIRD FLOOR**  
ELECTRICAL/TELEPHONE ROOM

3

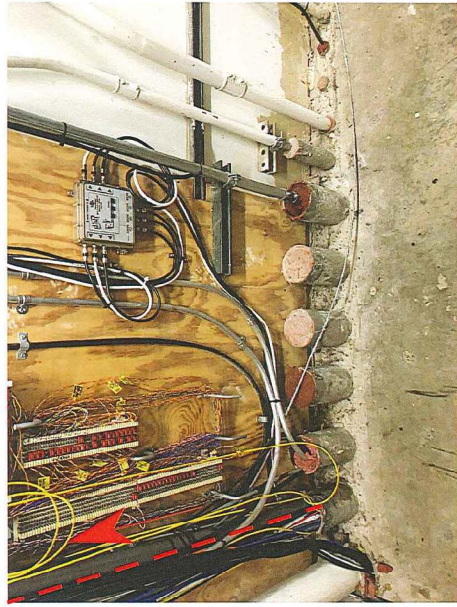


PHOTO: AT THE THIRD FLOOR  
ELECTRICAL/TELEPHONE ROOM FROM THE  
SECOND FLOOR

2

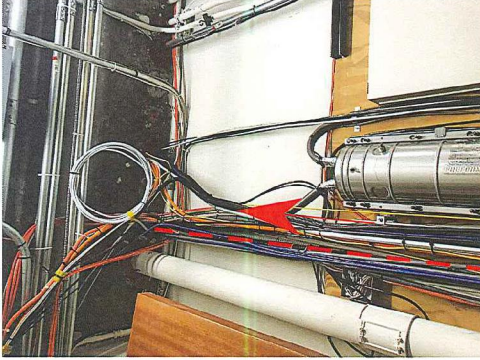


PHOTO: AT THE SECOND FLOOR  
ELECTRICAL/TELEPHONE ROOM TO THE  
THIRD FLOOR

4

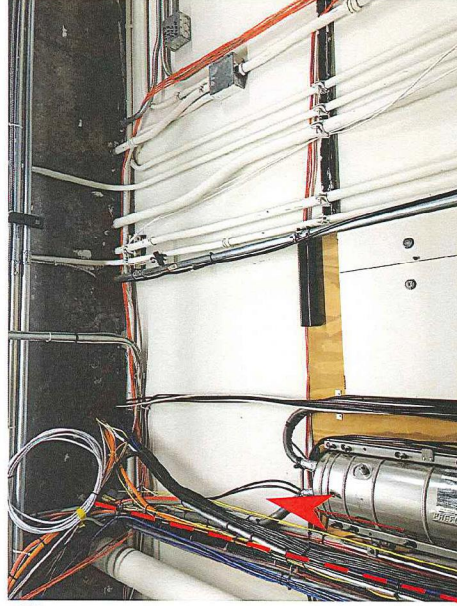


PHOTO: AT THE THIRD FLOOR  
ELECTRICAL/TELEPHONE ROOM TO THE  
FOURTH FLOOR

**verizonbusiness**  
SOUTHERN GLAZERS  
WINE AND SPIRITS

CLARIFICATION NO.	QUANTITY

Micmetro  
ACCESS TRANSMISSION SERVICES  
CORPORATION

OUTSIDE PLANT CONSTRUCTION  
VERIZON BUSINESS  
TITLE: FIBER OPTIC CABLE ROUTE  
14911 QUORUM DR ADDISON, TX 75254

DATE: 7/30/2018  
ENGINEER: COBBENDELY  
CHECKED BY: MD  
DRAWN BY: PM

**REVISIONS**

No.	DATE	DESCRIPTION	BY

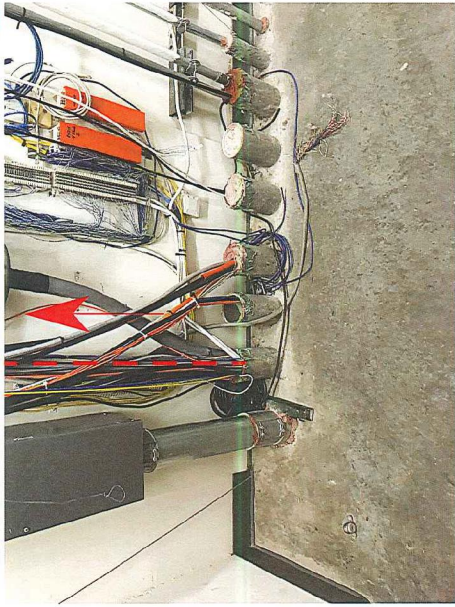
EXCEPT AS MAY BE OTHERWISE PROVIDED BY CONTRACT, THESE DRAWINGS AND SPECIFICATIONS SHALL BE THE PROPERTY OF VERIZON BUSINESS COMMUNICATIONS SERVICES, INC. (VCS). NO REPRODUCTION, COPIES, OR USE FOR ANY PURPOSE WITHOUT EXPRESS WRITTEN CONSENT FROM VCS IS ALLOWED.

SCALE: NA  
HORIZONTAL: NA  
VERTICAL: NA  
SHEET 21 OF 23

**MAP LINE LEGEND**  
- - - - - PROPOSED CONDUIT

HETL QUORUM DR.DWG

**FOURTH FLOOR  
ELECTRICAL/TELEPHONE ROOM**



1

PHOTO: AT THE FOURTH FLOOR ELECTRICAL/TELEPHONE ROOM FROM THE THIRD FLOOR

2

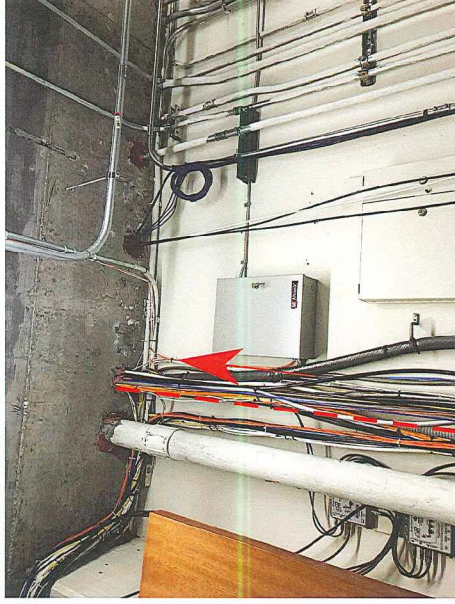
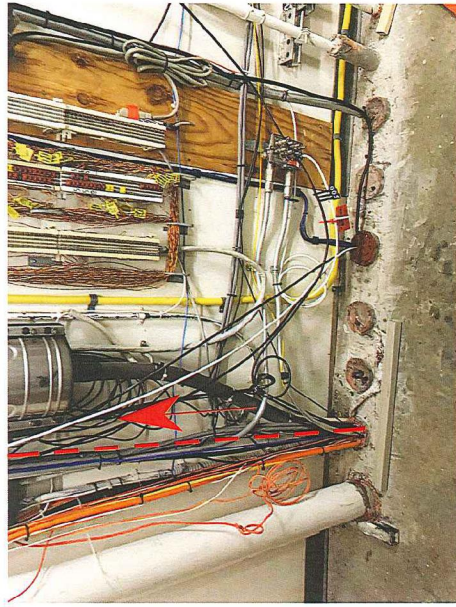


PHOTO: AT THE FOURTH FLOOR ELECTRICAL/TELEPHONE ROOM TO THE FIFTH FLOOR

**FIFTH FLOOR  
ELECTRICAL/TELEPHONE ROOM**



3

PHOTO: AT THE FIFTH FLOOR ELECTRICAL/TELEPHONE ROOM FROM THE FOURTH FLOOR

4

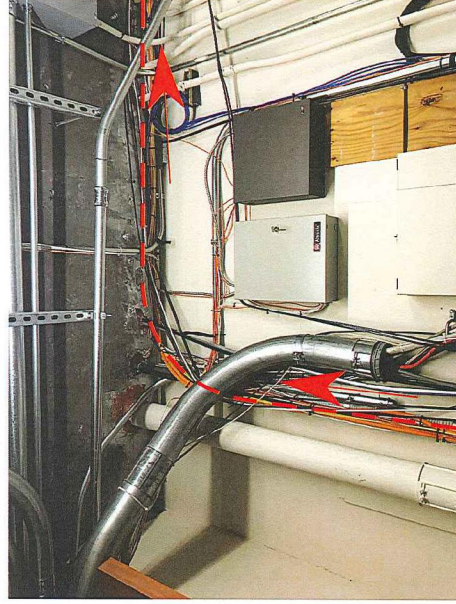


PHOTO: AT THE FIFTH FLOOR ELECTRICAL/TELEPHONE TO THE MECHANICAL ROOM

**MAP LINE LEGEND**

--- PROPOSED CONDUIT

SOUTHERN GLAZERS WINE AND SPIRITS			
CLARIFICATION NO.	QUANTITY		
OUTSIDE PLANT CONSTRUCTION			
ACCESS TRANSMISSION SERVICES			
Mclmetro CORPORATION			
TITLE: FIBER OPTIC CABLE ROUTE			
14911 QUORUM DR ADDISON, TX 75254			
DATE: 7/30/2018	ENGINEER: COBBENDELEY		
CHECKED BY: MD	DRAWN BY: PH		
REVISIONS			
No.	DATE	DESCRIPTION	BY
SCALE: NA			
HORIZONTAL: NA	VERTICAL: NA		
SHEET 22	OF 23		
14911 QUORUM DR.DWG			

SHEET AS MAY BE OTHERWISE PROVIDED BY CONTRACTOR. THESE DRAWINGS AND PROPORTIONS ARE THE PROPERTY OF VERIZON BUSINESS COMMUNICATIONS SERVICES, INC. (VCS). BOTH THE DRAWINGS AND PROPORTIONS ARE THE PROPERTY OF VCS. REPRODUCTION, COPIED, OR USED FOR ANY PURPOSE WITHOUT WRITTEN PERMISSION OF VCS IS STRICTLY PROHIBITED.



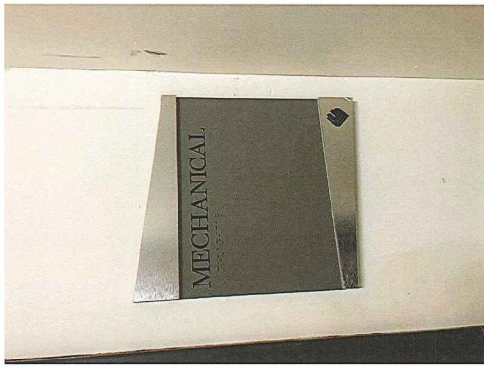
**FIFTH FLOOR  
ELECTRICAL/TELEPHONE ROOM**



1

PHOTO: FROM THE FIFTH FLOOR  
ELECTRICAL/TELEPHONE  
TO THE MECHANICAL ROOM

**FIFTH FLOOR  
MECHANICAL ROOM**



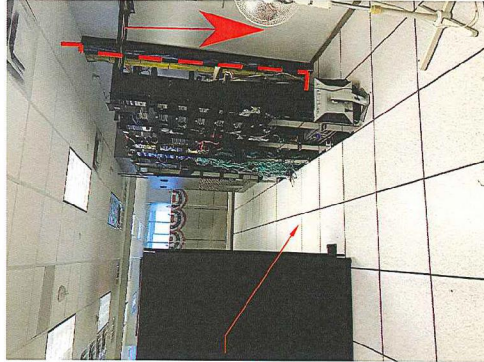
3

PHOTO: AT THE FIFTH FLOOR  
MECHANICAL ROOM



2

PHOTO: AT THE FIFTH FLOOR  
TO THE MECHANICAL ROOM



4

PROPOSED  
INSTALLATION RACK

PHOTO: THE FIFTH FLOOR  
MECHANICAL ROOM  
FROM ELECTRICAL/TELEPHONE

**MAP LINE LEGEND**

- - - PROPOSED CONDUIT

SOUTHERN GLAZERS  
YVINE AND SPIRITS

CLARIFICATION NO.	QUANTITY

Mcmetro  
ACCESS TRANSMISSION SERVICES  
CORPORATION

OUTSIDE PLANT CONSTRUCTION

TITLE: FIBER OPTIC CABLE ROUTE

VERIZON BUSINESS

14911 QUORUM DR ADDISON, TX 75254

DATE: 7/23/2018  
ENGINEER: COBB/FENDLEY  
CHECKED BY: MD  
DRAWN BY: PH

NO	DATE	DESCRIPTION	BY

EXCEPT AS MAY BE OTHERWISE PROVIDED BY CONTRACT, THIS DRAWING AND ANY PACKAGING OR INFORMATION HEREON IS THE PROPERTY OF VERIZON BUSINESS SERVICES, INC. (VBS). IT IS TO BE USED ONLY FOR THE PROJECT AND SITE SPECIFICALLY IDENTIFIED HEREON. IT IS NOT TO BE REPRODUCED, COPIED, OR USED FOR ANY PURPOSE WITHOUT EXPRESS WRITTEN PERMISSION FROM VERIZON BUSINESS SERVICES, INC.

SCALE NA  
HORIZONTAL: NA  
VERTICAL: NA

SHEET 23 OF 23

14911 QUORUM BLDGWS