

AIRPORT TERMINAL APRON SHOP DRAWINGS



FILE COPY

**SITE CONCRETE, INC.**  
 3340 Roy Orr Blvd. • Grand Prairie, TX 75050-4207

972-313-0733 • Fax 972-513-0825  
 Estimating Fax 972-513-0661

February 6, 2004

Jennifer Nicowander, P.E.  
 HNTB The HNTB Companies  
 5910 W. Plano PKWY, Suite 200  
 Plano, TX 75093

RE: Addison Airport, TxDOT CSJ No. 0318ADDON

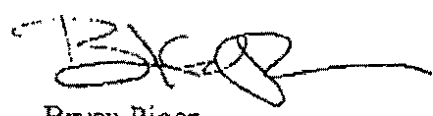
Dear Ms. Nicowander:

Site Concrete, Inc. would like to submit the following specifications for approval to use Pre-cast Inlets in lieu of Cast-in-place.

The details, sheet number 28 and 28A, require Cast-in Place or Premanufactured by Brooks (2424CB) as long as they maintain the traffic rating of H20. We propose to use a slightly bigger box with a heavier traffic rating. One reason to justify the change is the NEENAH R3475 grate will not be available for 4 weeks. This substitute will facilitate the desired target date for completion and will not cost any additional money.

Should you have any question please feel free to call me at 214-226-1822.

Sincerely,



Bryan Piper  
 Estimator/Project Manager

Enclosures

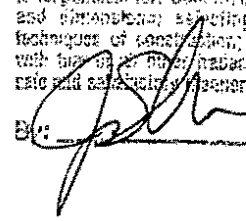
Copy: Bob Kosmicki, Site Concrete, Inc.  
 File: 23-133

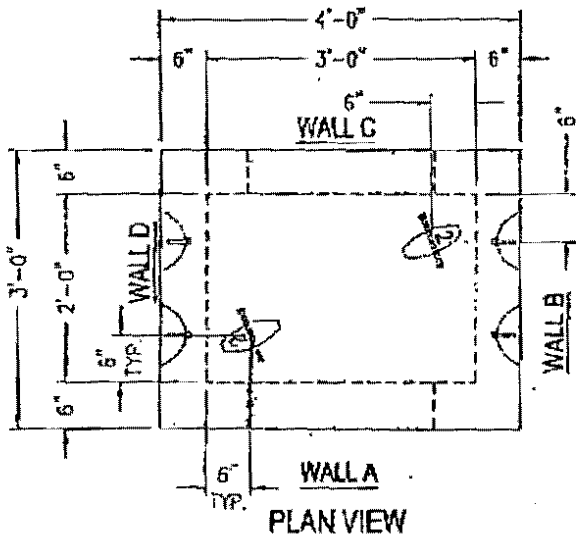
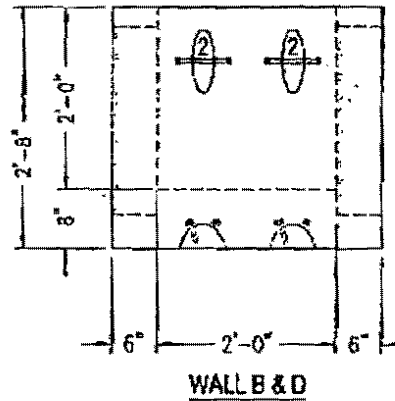
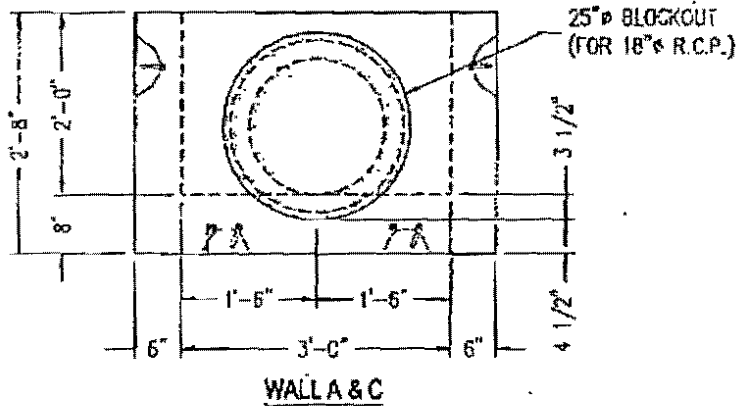
HNTB CORPORATION

APPROVED       FURNISH AS CORRECTED

REVISE AND RESUBMIT       REJECTED

Corrections or omissions made on the shop drawings during this review do not relieve contractor from compliance with requirements of the drawings and specifications. The check is only for review of the general conformity with the design concept of the project and general compliance with the information given in the contract documents. The contractor is responsible for coordinating and controlling all quantities and dimensions; selecting fabrication techniques and techniques of construction; coordinating his or her work with that of all other trades; and participating all work in a safe and satisfactory manner.

By:  Date: 2/8/04



HNTB CORPORATION

APPROVED

REVISE AND RESUBMIT

FURNISH AS CORRECTED

REJECTED

Corrections or comments made on the shop drawings during this review do not relieve contractor from compliance with requirements of the drawings and specifications. This check is only for review of the general conformance with the concept of the project and general compliance with the information given in the contract documents. The contractor is responsible for: Confirming and correcting all quantities and dimensions; selecting fabrication processes and techniques of construction; coordinating his or her work with that of all other trades and performing all work in a safe and satisfactory manner.

BY: *[Signature]* Date: 2/16/04

TO INCLUDE:

6 - #2 UA LIFTERS @ 90°



1122 HERSCHE PARK  
WAXSPRING, TX 76083  
PHONE: (817) 453-1054  
FAX: (817) 453-4007

PRODUCT

U/LM/F L/S

PRODUCT CHECKLIST

600Y	2750Y
------	-------

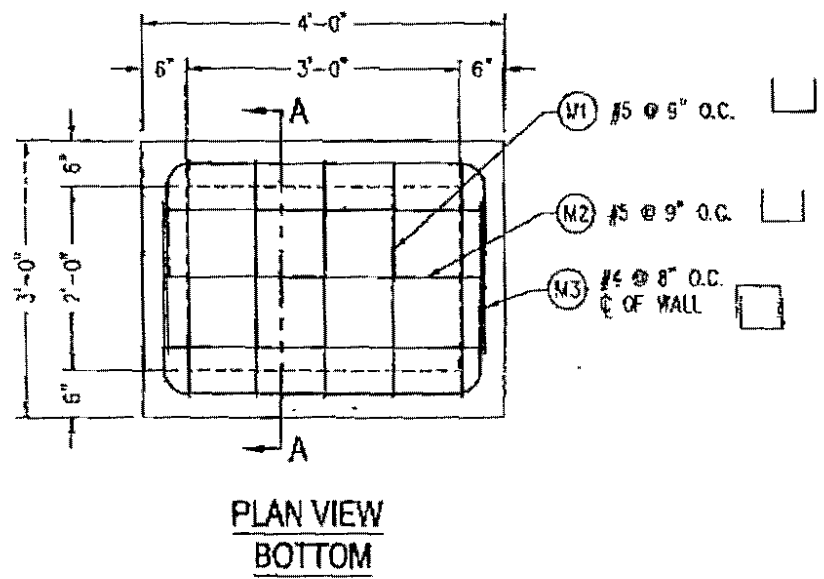
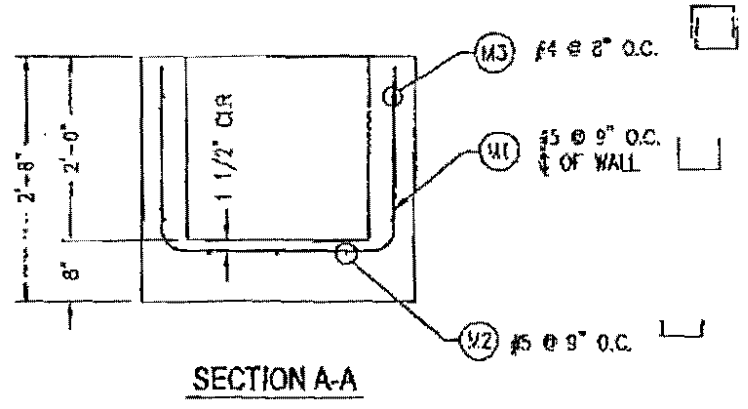
TYPE "A" MEET  
2'-0" X 3'-0" X 2'-0"  
SITE CONCRETE  
TOWN OF ADDISON PROJECT

CHECKED: *[Signature]* DATE: 2/15/04 APPROVED: DATE: SCALE: 1/2"=1'

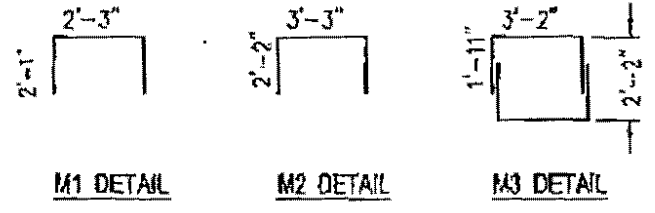
ORDER # DRAWN BY: SE SCLD BY: FE

REBAR	BOND FABRIC
MOLD/PALLET	GRABED ADD
TERMINATOR	SUMP
LIFTERS	PVC
PLUG RODS	BO/RO
INSERTS	DRYING CURT

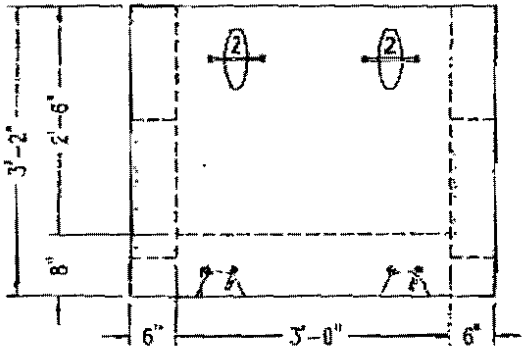
TOTAL WT. 2750Y DATE: 02/02/04 PAGE 1 OF 2



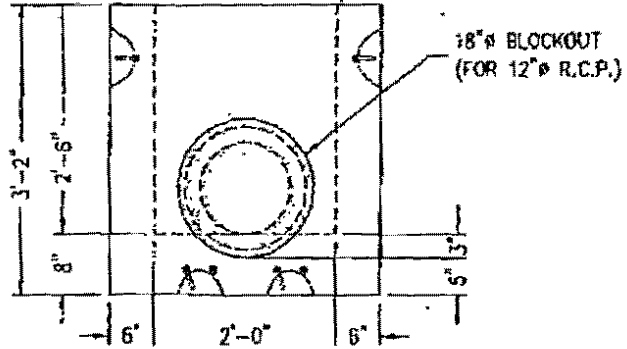
BILL OF MATERIALS				
Mark #	Size	Req'd	Total L	Type
M1	#5	5	6'-2"	SEE DETAIL
M2	#5	3	7'-3"	SEE DETAIL
M3	#4	6	5'-10"	SEE DETAIL
M4	#4	0	2'-0"	TRIM BARS
Size	Total length	Total Weight		
#4	57'-0"	38 POUNDS		
#5	52'-10"	55 POUNDS		



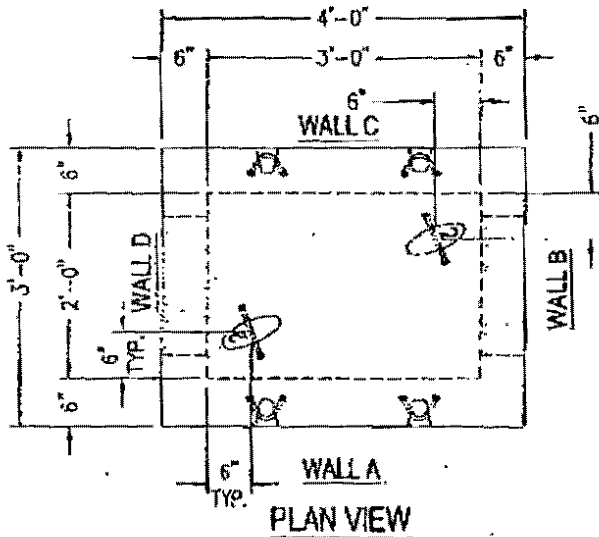
		1100 HORTALS PKWY. WASHINGTON, TX 75083 PHONE: (817) 453-1254 FAX: (817) 453-4057		PRODUCT:	ITEM #    UNC #	PRODUCTION CHECKLIST REBAR      BOND FABRIC MOLD/PALLET      CHILING POB THERMATOR      SEAP LIFTERS      P.C. FULL IRONS      60/NO INSERTS      DR/INC/ONT		TYPE "A" INLET 2'-0" X 3'-0" X 2'-0" SITE CONCRETE TOWN OF ADDISON PROJECT	
CHECKED: <i>pm</i>	DATE: <i>2/5/04</i>	APPROVED:	DATE:	TOTAL WT.		DATE: 02/03/04	PAGE 2 OF 2		
ORDER #	DRAWN BY: SR	SOLD BY: FC	SCALE: 1/2"=1'						



WALL A & C



WALL B & D



PLAN VIEW

TO INCLUDE:  
 6 - #2 UA LIFTERS @ 90°

**Oldcastle Precast, Inc.**

1100 HERSCHE PKWY.  
 MANSFIELD, TX 76063  
 PHONE: (817) 433-1054  
 FAX: (817) 433-4007

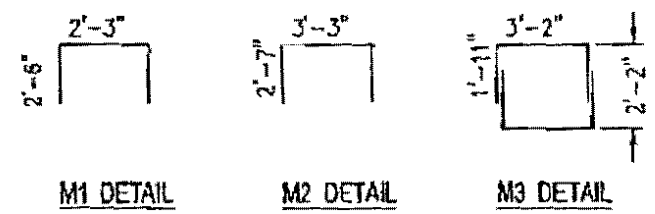
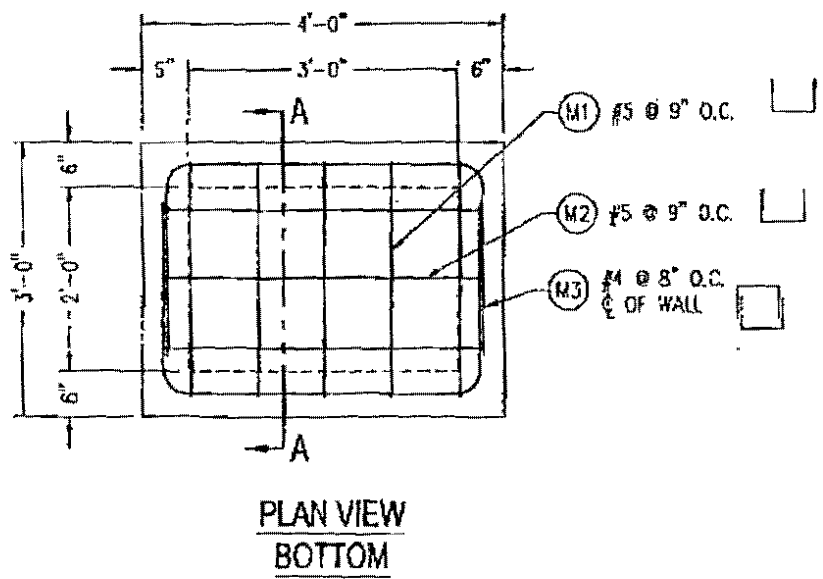
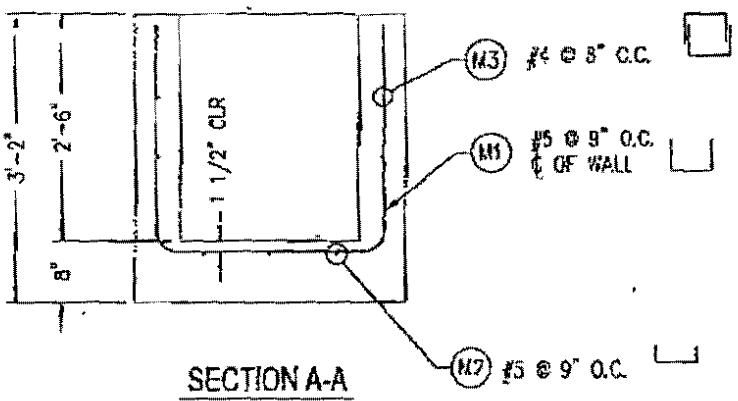
PROJECT: \_\_\_\_\_ ITEM & LINE # \_\_\_\_\_

PRODUCTION CHECKLIST	
PC/BAR	BOND W/BEDDY
WELD/PALLET	CROWN-R RDR
TERMINATOR	SLAB
LIFTERS	PVC
PULL SCREWS	90°/90
INSURTS	DR/ROB/GRIT

BODY	3525#
TOTAL WT.	3325#

TYPE "B" INLET  
 2'-0" X 3'-0" X 2'-6"  
 SITE CONCRETE  
 TOWN OF ADDISON PROJECT  
 DATE: 02/02/04 PAGE 1 OF 2

CHECKED: <i>AM</i>	DATE: <i>2/2/04</i>	APPROVED: _____	DATE: _____
ORDER# _____	DRAWN BY: SR	SOLD BY: TE	SCALE: 1/2" = 1'



BILL OF MATERIALS				
Work #	Size	Reqd	Total L	Type
M1	#5	5	7'-0"	SEE DETAIL
M2	#5	3	8'-2"	SEE DETAIL
M3	#4	8	6'-8"	SEE DETAIL
M4	#4	8	2'-0"	TR M BARS
Size	Total Length	Total Weight		
#4	83'-6"	47 POUNDS		
#5	59'-6"	52 POUNDS		

**Oldcastle Precast, Inc.**

1100 HERITAGE PARK  
 MANFIELD TX 76803  
 PHONE (817) 463-1200  
 FAX (817) 463-4007

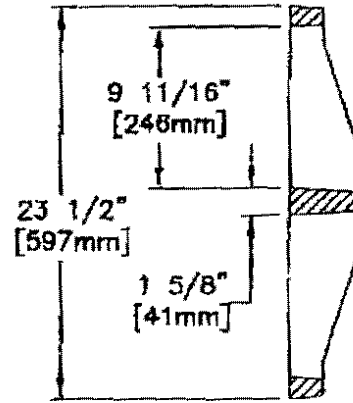
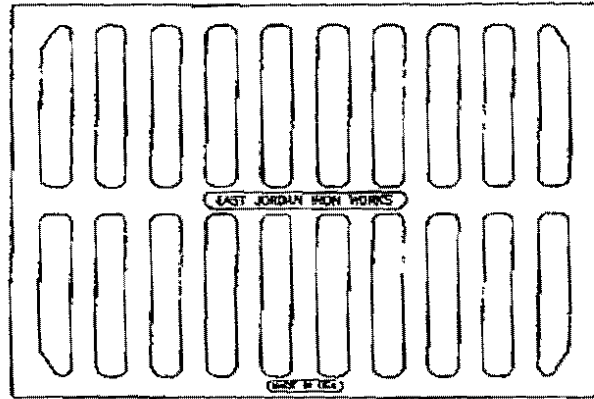
PROJECT ITEM # LINE #

- PRECINCTOR CHECKLIST	
REBAR	BOND AGENT
MOLD/PALLET	GROUND AGG
TERMINATOR	SUMP
LETTERS	PVC
POOL FORMS	BO/RG
INSTRS	EN/PMS/PS

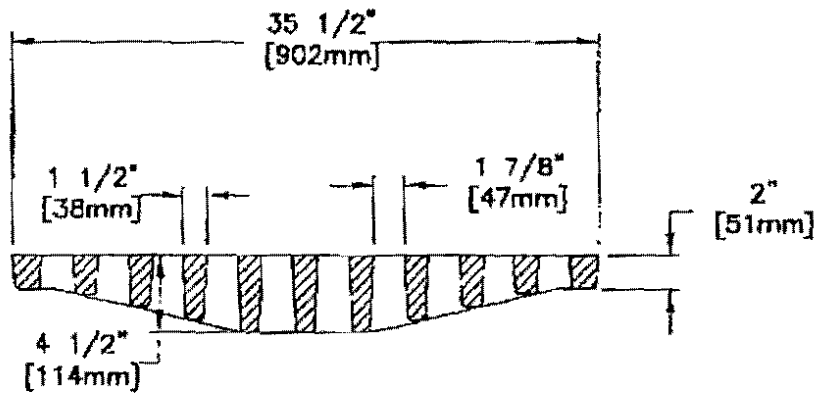
TYPE "B" #RE  
 2'-0" X 3'-0" X 2'-6"  
 SITE CONCRETE  
 TOWN OF ADDISON PROJECT

CHECKED: <i>AM</i>	DATE: <i>2/5/04</i>	APPROVED:	DATE:
ORDER# 25770	DRAWN BY: <i>SH</i>	SOLD BY: <i>JE</i>	SCALE: 1/2"=1'

TOTAL WT.	DATE: 02/03/04	PAGE 2 OF 2
-----------	----------------	-------------



GRATE SECTION



GRATE SECTION

EAST JORDAN  
IRON WORKS, INC.  
P.O. BOX 439  
EAST JORDAN, MI. 49727  
1-800-874-4100  
FAX 231-536-4458

DRAWN TCL	DATE 12/06/03
--------------	------------------

APPROVED	DATE
----------	------

CATCH BASIN  
GRATE

PRODUCT NO.

00543031

CATALOG NO.

5430M

REF. PRODUCT DRAWING

543031

EST. WT.

GRATE: 285 LBS 134kg

OPEN AREA

355 sq. in.  
[2290 sq. cm.]

MAT'L SPEC.

GRATE - GRAY IRON  
ASTM A48 CL35B

LOAD RATING

EXTRA HEAVY DUTY  
(PROOF LOAD TESTED  
TO 200,000 LBS.)



EAST JORDAN  
IRON WORKS, INC.  
P.O. BOX 439  
EAST JORDAN, MI. 49727  
1-800-874-4100  
FAX 231-536-4458

DRAWN TCL	DATE 12/0203
APPROVED	DATE

CATCH BASIN  
FRAME

PRODUCT NO.  
**543011**

CATALOG NO.  
5430Z

REF. PRODUCT DRAWING  
543011

EST. WT.  
FRAME: 280 LBS 127kg

OPEN AREA  
N/A

MAT'L SPEC.  
FRAME - GRAY IRON  
ASTM A48 CL35B

LOAD RATING  
EXTRA HEAVY DUTY  
(PROOF LOAD TESTED  
TO 200,000 LBS.)

