

Control Monuments
Addison Airport, Addison, Texas

Control Monument

Texas State Plane Coordinates
 Zone: North Central (4202)
 Elevation: NAVD 88

Scale Factor: 0.999873646
 Combined Factor: 0.999843119

Texas State Plane Coordinates
 North: 7039689.078
 East: 2480245.682
 Elevation: 638.30 (NAVD 88)

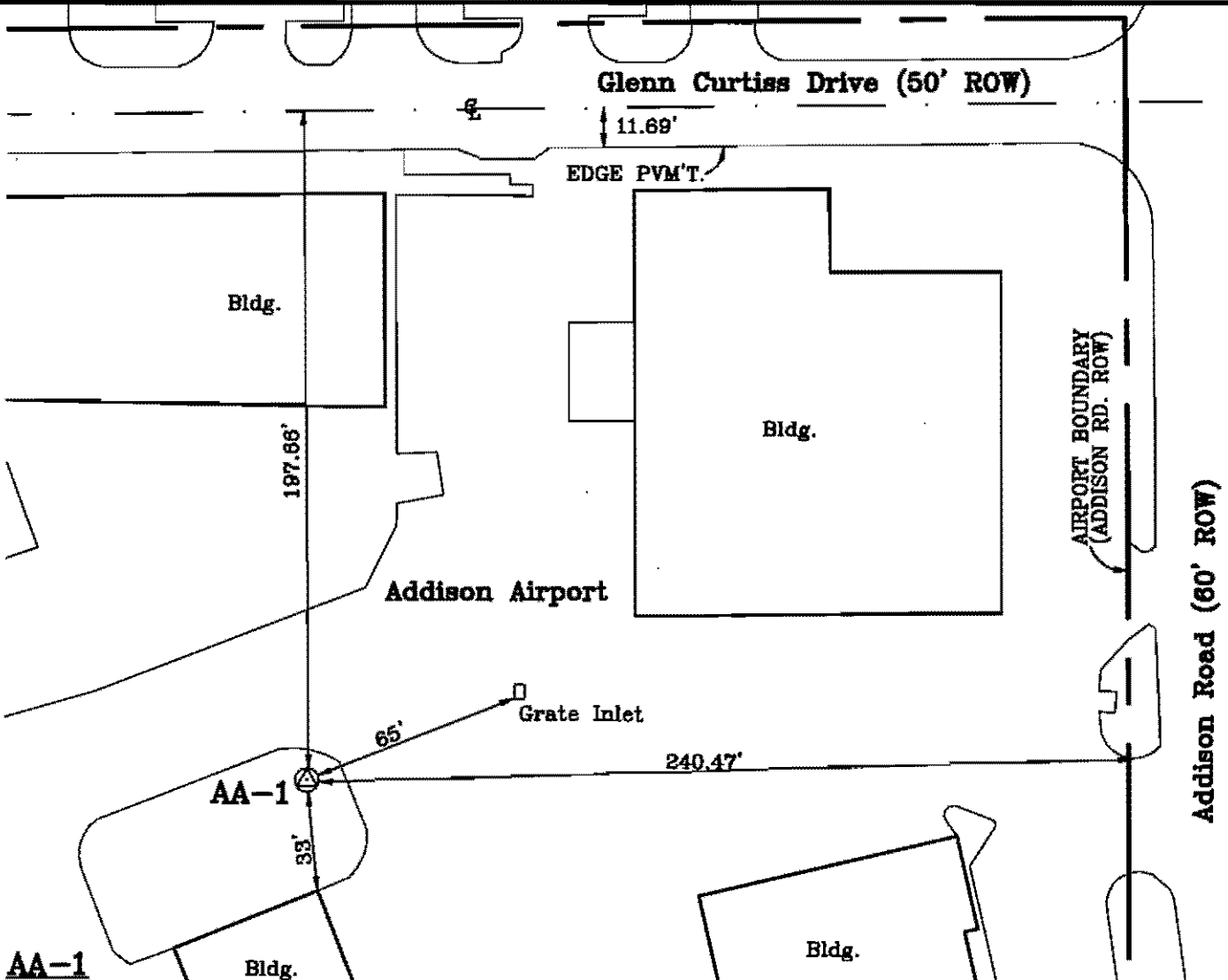
Latitude: 32°58'09.936" N
 Longitude: 96°49'52.390" W

DAL-TECH
ENGINEERING, INC.

17311 DALLAS PKWY., SUITE 200
 DALLAS, TEXAS 75248
 PH. (972)250-2727
 FAX (972)250-4774

Point Name: AA-1

Description: 3" Aluminum Disk set in concrete, inscribed with "AA-1"



AA-1 Located on the east side of Addison Airport, 197.66' south of the center line of Glenn Curtiss Drive (an undedicated 50' ROW) and 240.47' west from the west ROW line of Addison Road (60' ROW).

Control Monument

Texas State Plane Coordinates
Zone: North Central (4202)
Elevation: NAVD 88

Scale Factor: 0.999873526
Combined Factor: 0.999842826

Texas State Plane Coordinates
North: 7041501.126
East: 2480144.730
Elevation: 641.92 (NAVD 88)

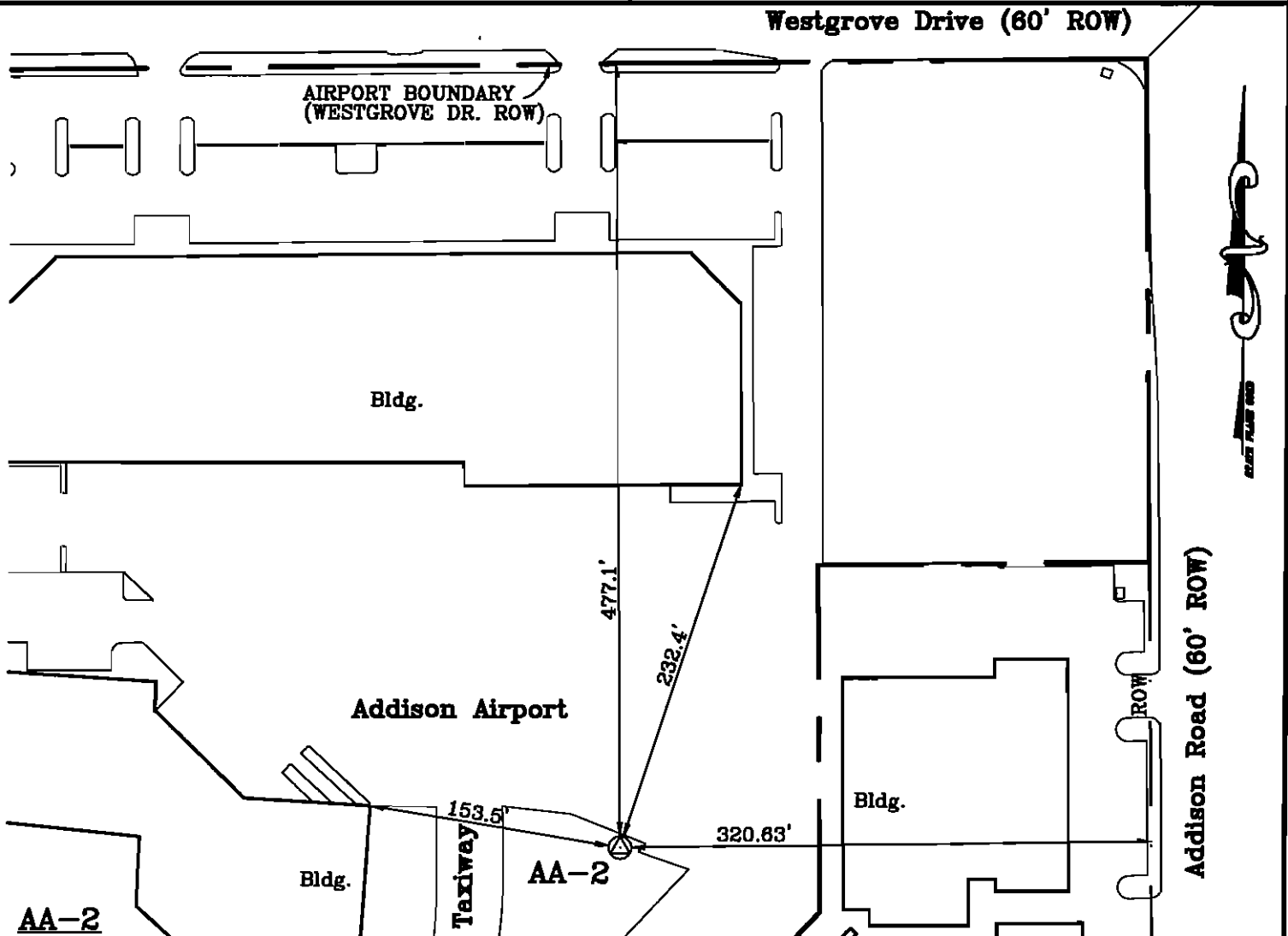
Latitude: 32°58'27.880" N
Longitude: 96°49'53.237" W

DAL-TECH
ENGINEERING, INC.

17311 DALLAS PKWY., SUITE 200
DALLAS, TEXAS 75248
PH. (972)250-2727
FAX (972)250-4774

Point Name: AA-2

Description: 3" Aluminum Disk set in
concrete, inscribed with "AA-2"



Located on the east side of Addison Airport, 320.63' west of west ROW of Addison Road & 477.1' south of south ROW of Westgrove Drive (60' ROW).

Control Monument

Texas State Plane Coordinates
Zone: North Central (4202)
Elevation: NAVD 88

Scale Factor: 0.999873824
Combined Factor: 0.999843310

Texas State Plane Coordinates
North: 7037202.352
East: 2480632.193
Elevation: 638.03 (NAVD 88)

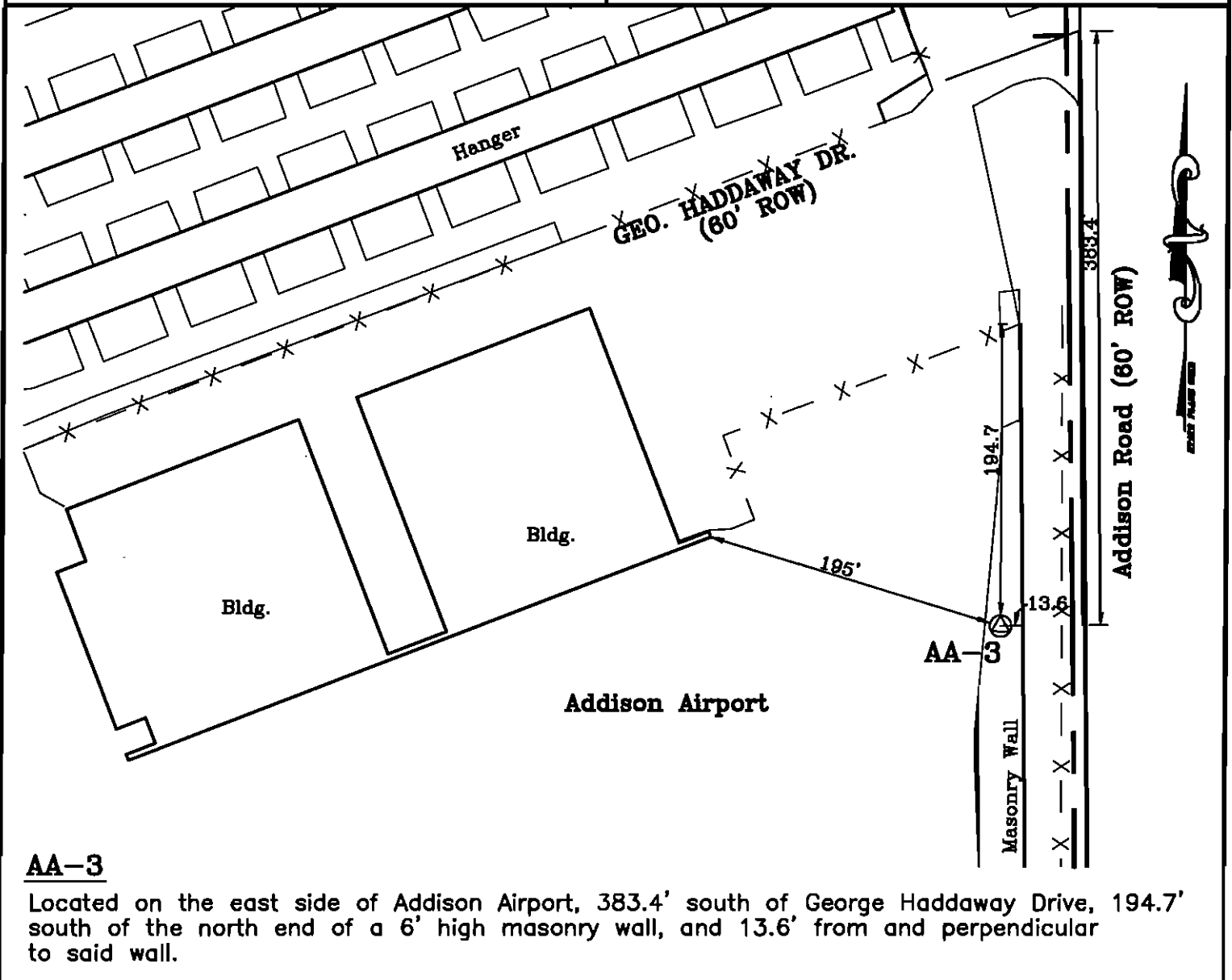
Latitude: 32°57'45.271" N
Longitude: 96°49'48.317" W

DAL-TECH
ENGINEERING, INC.

Point Name: AA-3

Description: 3" Aluminum Disk set in concrete, inscribed with "AA-3"

17311 DALLAS PKWY., SUITE 200
DALLAS, TEXAS 75248
PH. (972)250-2727
FAX (972)250-4774



AA-3

Located on the east side of Addison Airport, 383.4' south of George Haddaway Drive, 194.7' south of the north end of a 6' high masonry wall, and 13.6' from and perpendicular to said wall.

Control Monument

Texas State Plane Coordinates
Zone: North Central (4202)
Elevation: NAVD 88

Scale Factor: 0.999873917
Combined Factor: 0.999843671

Texas State Plane Coordinates
North: 7035957.986
East: 2479444.822
Elevation: 632.41 (NAVD 88)

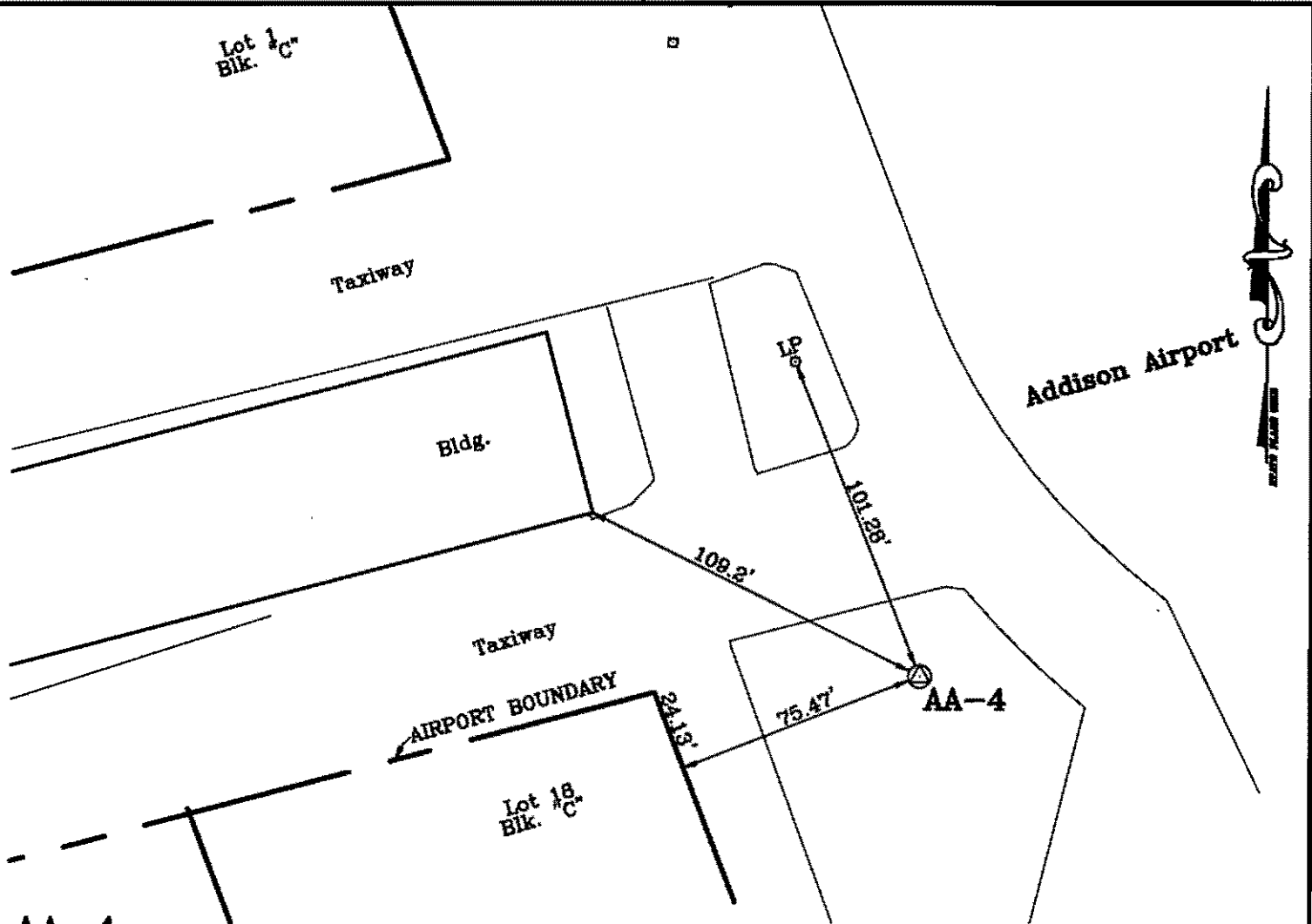
Latitude: 32°57'33.146" N
Longitude: 96°50'02.484" W

DAL-TECH
ENGINEERING, INC.

Point Name: AA-4

Description: 3" Aluminum Disk set in
concrete, inscribed with "AA-4"

17311 DALLAS PKWY., SUITE 200
DALLAS, TEXAS 75248
PH. (972)250-2727
FAX (972)250-4774



AA-4

Located on the west side of Addison Airport, 24.13' southeast of, and 75.47' northeast of the northeast corner of Lot 18, Block "C", Addison Airport Industrial Addition.

Control Monument

Texas State Plane Coordinates
Zone: North Central (4202)
Elevation: NAVD 88

Scale Factor: 0.999873656
Combined Factor: 0.999843172

Texas State Plane Coordinates
North: 7039506.863
East: 2478102.163
Elevation: 637.40 (NAVD 88)

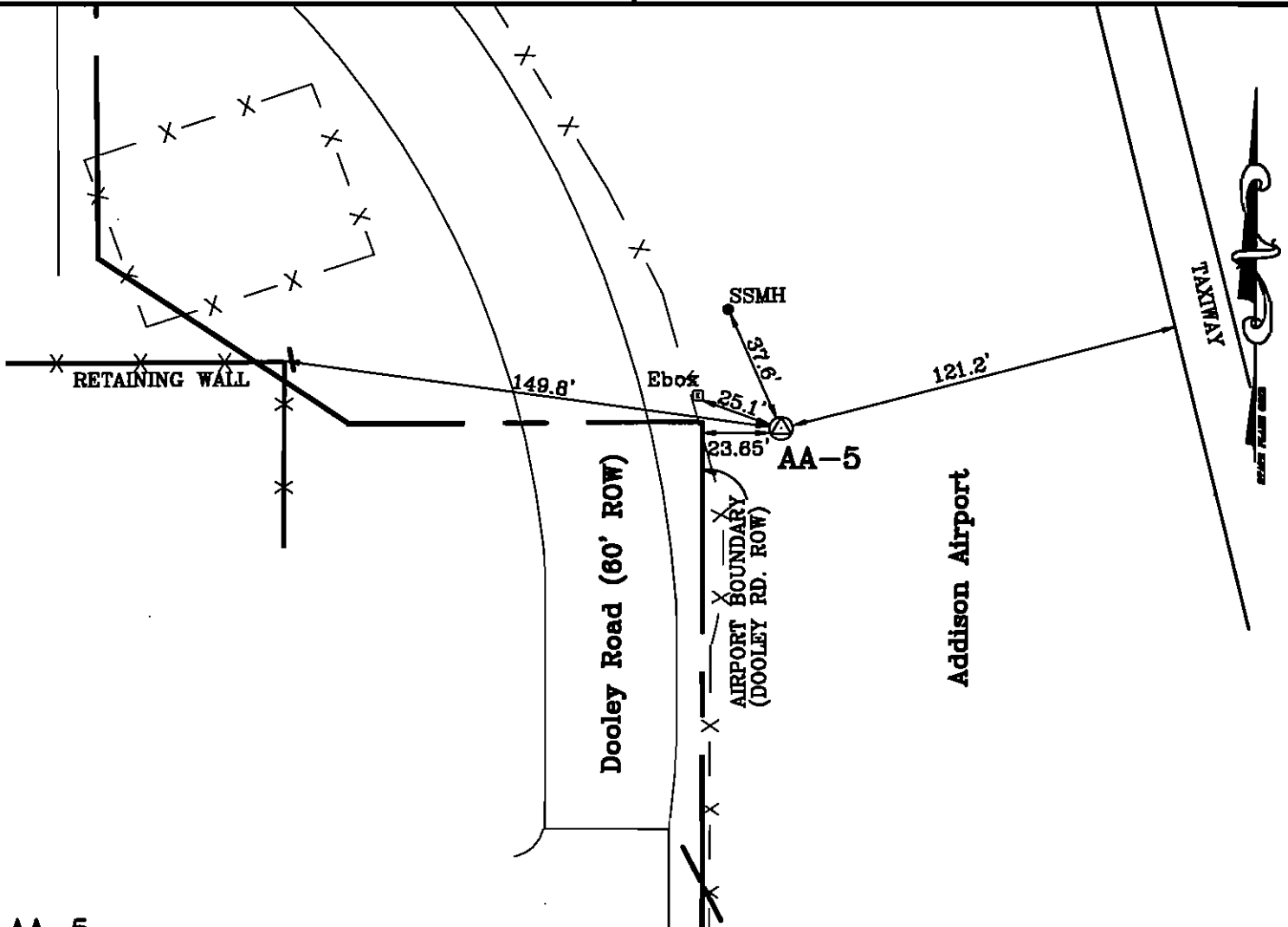
Latitude: 32°58'08.469" N
Longitude: 96°50'17.583" W

DAL-TECH
ENGINEERING, INC.

17311 DALLAS PKWY., SUITE 200
DALLAS, TEXAS 75248
PH. (972)250-2727
FAX (972)250-4774

Point Name: AA-5

Description: 3" Aluminum Disk set in
concrete, inscribed with "AA-5"



AA-5

Located in the Addison Airport, on the north old ROW line of Keller Springs Drive (50' ROW), 23.65' east of the ROW line of Dooley Road (60' ROW). And from Northeast corner of tunnel retaining wall.

Control Monument

Texas State Plane Coordinates
Zone: North Central (4202)
Elevation: NAVD 88

Scale Factor: 0.999873379
Combined Factor: 0.999842184

Texas State Plane Coordinates
North: 7043848.691
East: 2477497.499
Elevation: 652.26 (NAVD 88)

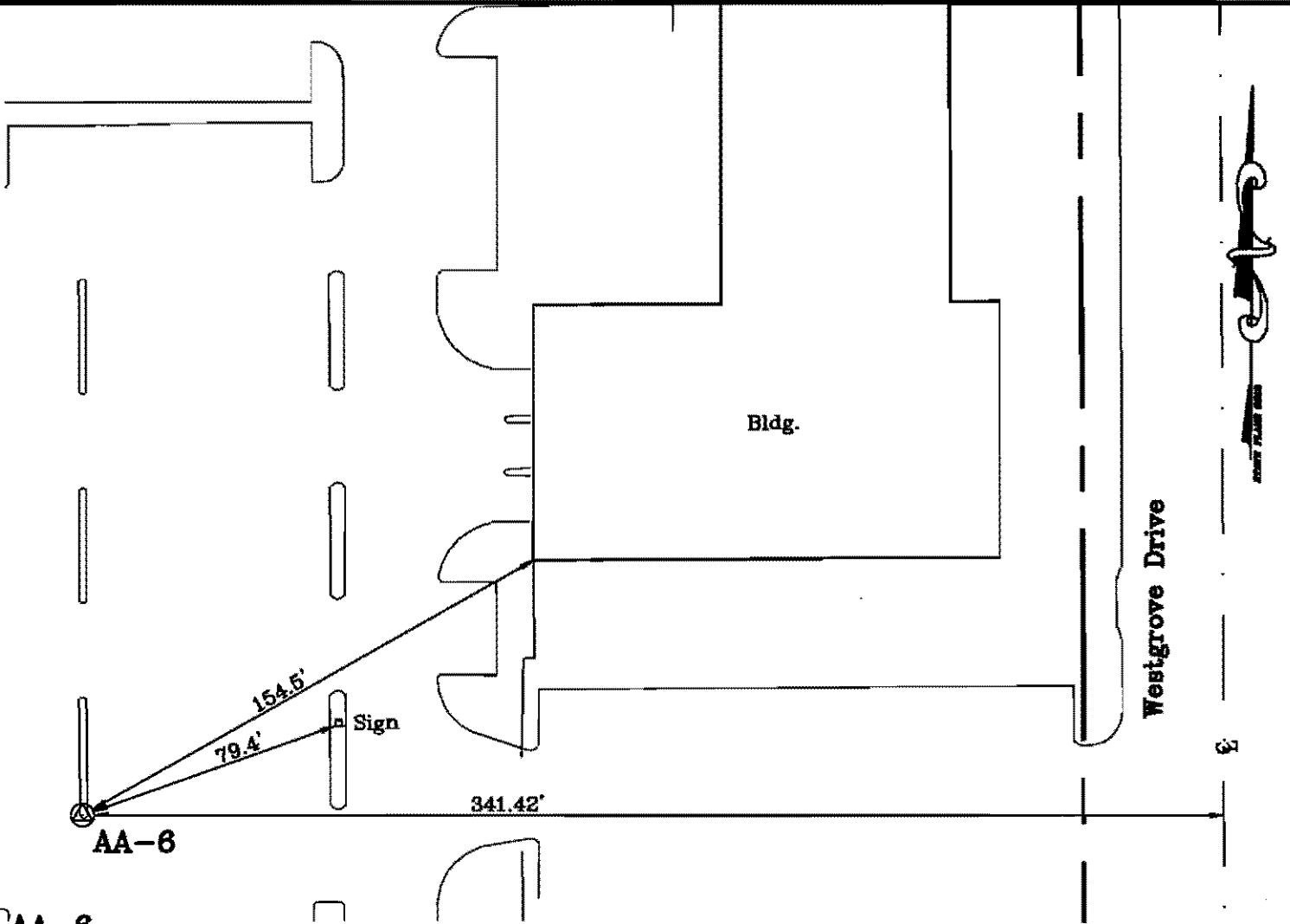
Latitude: 32°58'51.522" N
Longitude: 96°50'23.875" W

DAL-TECH
ENGINEERING, INC.

17311 DALLAS PKWY., SUITE 200
DALLAS, TEXAS 75248
PH. (972)250-2727
FAX (972)250-4774

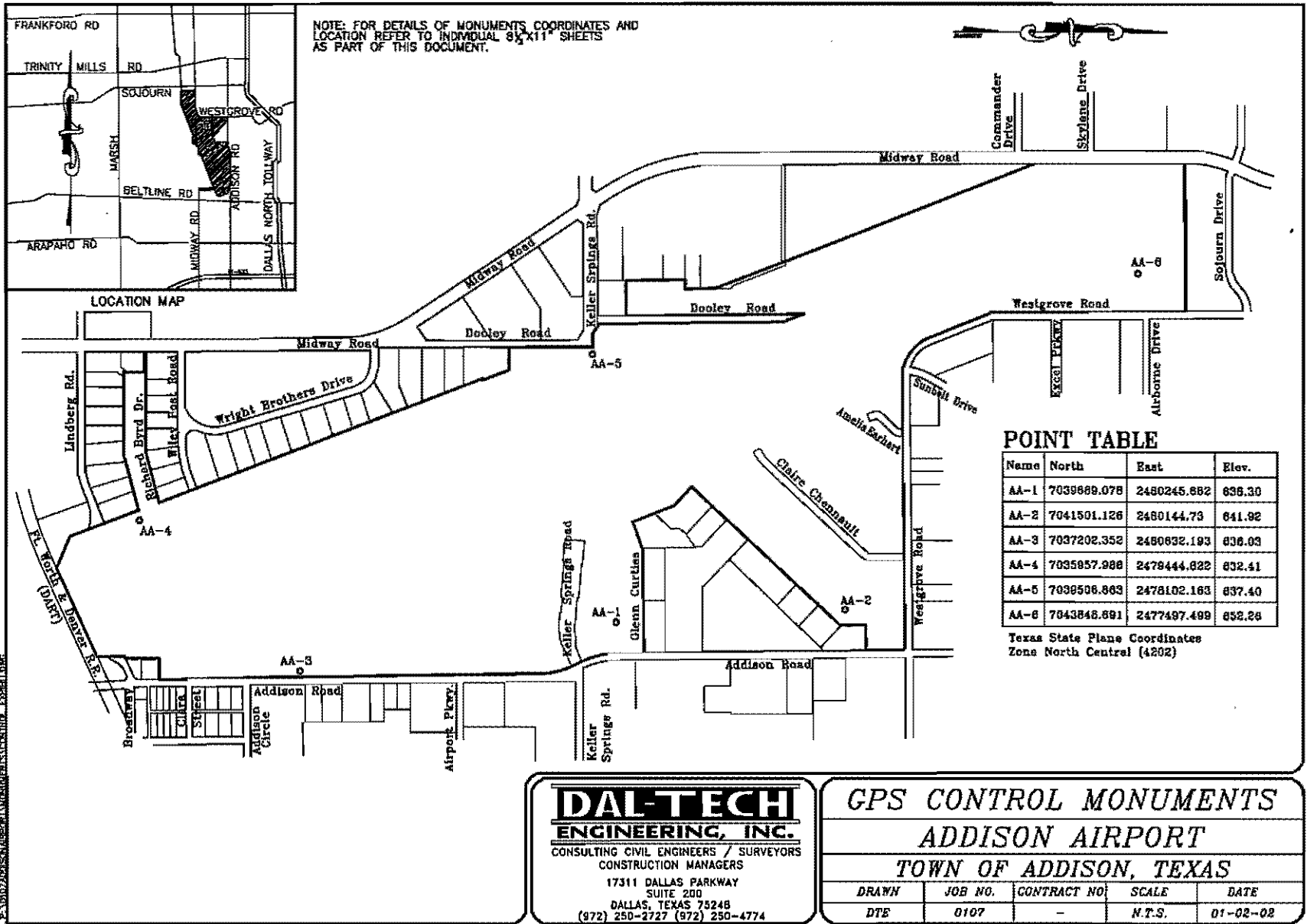
Point Name: AA-6

Description: 3" Aluminum Disk set in
concrete, inscribed with "AA-6"



AA-6

Located in the Town of Addison Service Center Compound, 341.42' West of centerline of Westgrove Drive (60' ROW). Monument set at the south radius point of a 3-foot wide traffic island, 4" below top-of-curb.



NOTE: FOR DETAILS OF MONUMENTS COORDINATES AND LOCATION REFER TO INDIVIDUAL 8 1/2 X 11 SHEETS AS PART OF THIS DOCUMENT.

POINT TABLE

Name	North	East	Elev.
AA-1	7039889.078	2480245.882	838.30
AA-2	7041501.126	2480144.73	841.92
AA-3	7037202.352	2480832.193	838.03
AA-4	7035857.988	2478444.822	832.41
AA-5	7038506.863	2478102.183	837.40
AA-6	7843848.891	2477487.499	852.28

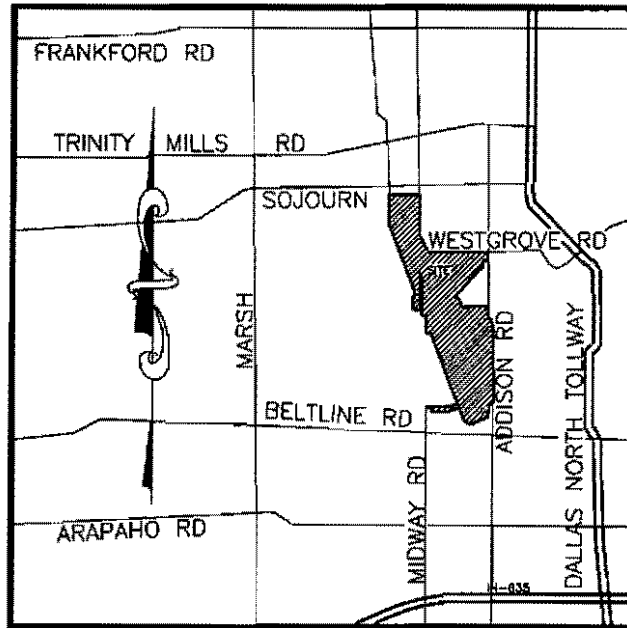
Texas State Plane Coordinates
Zone North Central (4202)

P:\1802\ADDISON\ADDISON\GPS\CONTROL_POINTS.DWG

DAL-TECH
ENGINEERING, INC.
 CONSULTING CIVIL ENGINEERS / SURVEYORS
 CONSTRUCTION MANAGERS
 17311 DALLAS PARKWAY
 SUITE 200
 DALLAS, TEXAS 75248
 (872) 250-2727 (872) 250-4774

GPS CONTROL MONUMENTS
ADDISON AIRPORT
TOWN OF ADDISON, TEXAS

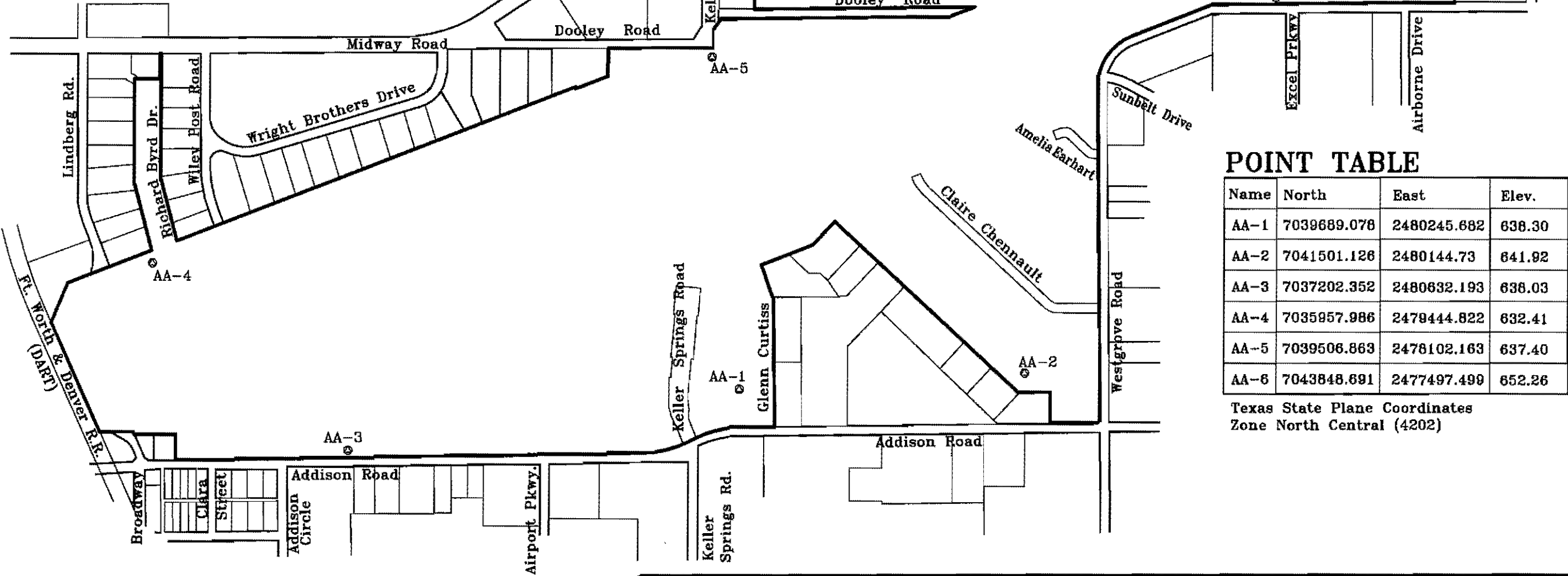
DRAWN	JOB NO.	CONTRACT NO.	SCALE	DATE
DTE	0107	-	N.T.S.	01-02-02



NOTE: FOR DETAILS OF MONUMENTS COORDINATES AND LOCATION REFER TO INDIVIDUAL 8 1/2 X 11" SHEETS AS PART OF THIS DOCUMENT.



LOCATION MAP



POINT TABLE

Name	North	East	Elev.
AA-1	7039689.078	2480245.682	638.30
AA-2	7041501.126	2480144.73	641.92
AA-3	7037202.352	2480632.193	638.03
AA-4	7035957.986	2479444.822	632.41
AA-5	7039506.863	2478102.163	637.40
AA-6	7043848.691	2477497.499	652.26

Texas State Plane Coordinates
Zone North Central (4202)

P:\0107ADDISON AIRPORT MONUMENTS CONTROL EXHIBIT.DWG

DAL-TECH
ENGINEERING, INC.

CONSULTING CIVIL ENGINEERS / SURVEYORS
CONSTRUCTION MANAGERS

17311 DALLAS PARKWAY
SUITE 200
DALLAS, TEXAS 75248

(972) 250-2727 (972) 250-4774

GPS CONTROL MONUMENTS
ADDISON AIRPORT
TOWN OF ADDISON, TEXAS

DRAWN	JOB NO.	CONTRACT NO.	SCALE	DATE
DTE	0107	-	N.T.S.	01-02-02