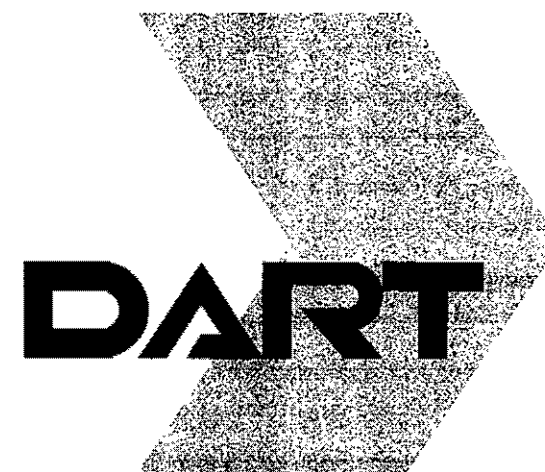


DART TRANSIT CENTER PARKING

# ADDISON TRANSIT CENTER PARKING LOT EXPANSION

C-96000124-28



## INDEX

SHEET NO.	SHEET NAME
1	COVER SHEET
2	GENERAL NOTES
3	SITE PLAN
4	EXISTING BUS LANE EXPANSION
5	DRAINAGE AND GRADING PLAN
6	PAVEMENT JOINT LAYOUT
7	PAVEMENT MARKING AND SIGNING PLAN
8	MISCELLANEOUS DETAILS
9	SWPPP GENERAL NOTES
10	SWPPP STANDARD DETAILS
11	LANDSCAPE DEVELOPMENT
12	LANDSCAPE DETAILS/NOTES

TOWN OF ADDISON

RECOMMENDED:

\_\_\_\_\_  
DIRECTOR OF PUBLIC WORKS                      DATE

**Turner Collie & Braden Inc.**  
ENGINEERS • PLANNERS • PROJECT MANAGERS

PRELIMINARY
SUBMITTED FOR REVIEW
BY Charles E. Bennett, P.E.    P.E. 68613
<b>Turner Collie &amp; Braden Inc.</b>
Date                      NOVEMBER 2001
NOT FOR CONSTRUCTION, BIDDING OR PERMITTING PURPOSES

11-16-01

DALLAS AREA RAPID TRANSIT

RECOMMENDED:

\_\_\_\_\_  
MAHESH KUIMIL, P.E.                      DATE  
PROJECT MANAGER  
MOBILITY PROGRAMS DEVELOPMENT

APPROVED:

\_\_\_\_\_  
KOOROSH OLYAI, P.E.                      DATE  
ASSISTANT VICE PRESIDENT  
MOBILITY PROGRAMS DEVELOPMENT



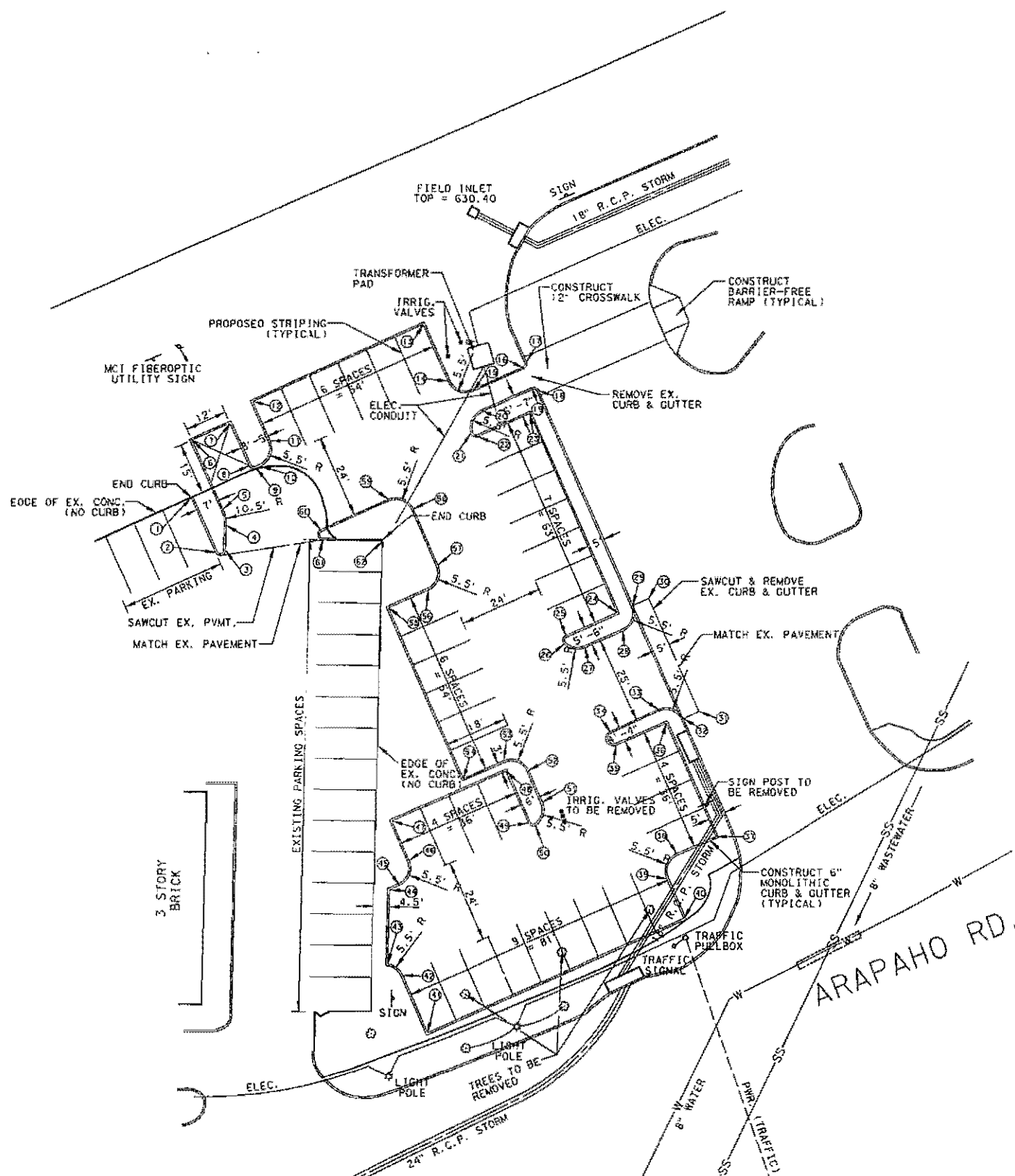
REFERENCE POINTS

#	NORTHING	EASTING
1	10920.8449	12110.6895
2	10905.0626	12117.8474
3	10905.6479	12120.7131
4	10912.8135	12120.8172
5	10917.3908	12119.9424
6	10937.3969	12110.8688
7	10942.3534	12121.1972
8	10930.0588	12127.3734
9	10929.3123	12123.3591
10	10929.8905	12130.6340
11	10937.1295	12133.3898
12	10948.5573	12128.3025
13	10970.9031	12177.4826
14	10954.4702	12184.7721
15	10951.6671	12192.0166
16	10958.1250	12206.6798
17	10960.1065	12207.4465
18	10951.8788	12211.0939
19	10952.6435	12209.1179
20	10946.1940	12194.4759
21	10939.5041	12191.4484
22	10938.5847	12193.4870
23	10945.2652	12208.5459
24	10887.6770	12234.0928
25	10881.1048	12219.2770
26	10878.6556	12218.8422
27	10877.5808	12224.8968
28	10882.4467	12235.8659
29	10889.7044	12238.6633
30	10891.7587	12243.2218
31	10859.0988	12257.9190
32	10857.0519	12253.3571
33	10859.7308	12246.0548
34	10853.3250	12232.2278
35	10849.3943	12234.0075
36	10855.6037	12248.5027
37	10822.8787	12263.0611
38	10817.8237	12251.6291
39	10810.5693	12248.8237
40	10795.1371	12253.8781
41	10766.3804	12179.7971
42	10782.8428	12172.5178
43	10786.0777	12168.1569
44	10807.3467	12168.5880
45	10808.5927	12171.4059
46	10815.8471	12174.2118
47	10827.2793	12169.1568
48	10841.8378	12202.0817
49	10826.7473	12208.7544
50	10826.0257	12210.8116
51	10832.7996	12212.7518
52	10842.0197	12208.6749
53	10844.8257	12201.4205
54	10839.6661	12189.7518
55	10889.0275	12167.8553
56	10894.0799	12179.2816
57	10901.3403	12182.0850
58	10917.5269	12174.9047
59	10920.3056	12167.6054
60	10911.4867	12148.1609
61	10908.6210	12148.7461
62	10908.2243	12166.0712

NOTE:  
ALL REFERENCE POINTS ARE  
TAKEN AT FACE OF CURB.



SCALE IN FEET  
0 20 40



NOTE: SEE SHEET 4 FOR INFORMATION  
IN THIS AREA.

PRELIMINARY  
SUBMITTED FOR REVIEW  
BY Charles E. Bennett, P.E. P.E. 68618  
Turner Collie & Braden, Inc.  
Date: NOVEMBER 2001  
NOT FOR CONSTRUCTION, BIDDING  
OR PERMITTING PURPOSES

CONTRACT SHEET NO. 3 OF 12

REV	DATE	DESCRIPTION	BY	ENG	CHK	APP	REV	DATE	DESCRIPTION	BY	ENG	CHK	APP

TURNER COLLIE & BRADEN INC.  
LINDA TYCHER & ASSOCIATES  
ARS ENGINEERS INC.

DART PROJECT



SCALE	1"=20'
DRAWN	J. RATCLIFF
DESIGNED	J. RATCLIFF
CHECKED	C. BENNETT
IN CHARGE	G. SHIPPY
DATE	NOVEMBER 2001

ADDISON  
TRANSIT CENTER  
SITE PLAN

CONTRACT C-10000124-28 DWG NO. REV 0

① P.C. STA.  
N. = 10998.05  
E. = 12207.93

② P.T. STA.  
N. = 11019.86  
E. = 12236.52  
R. = 73.81'

③ P.C. STA.  
N. = 11066.44  
E. = 12343.27

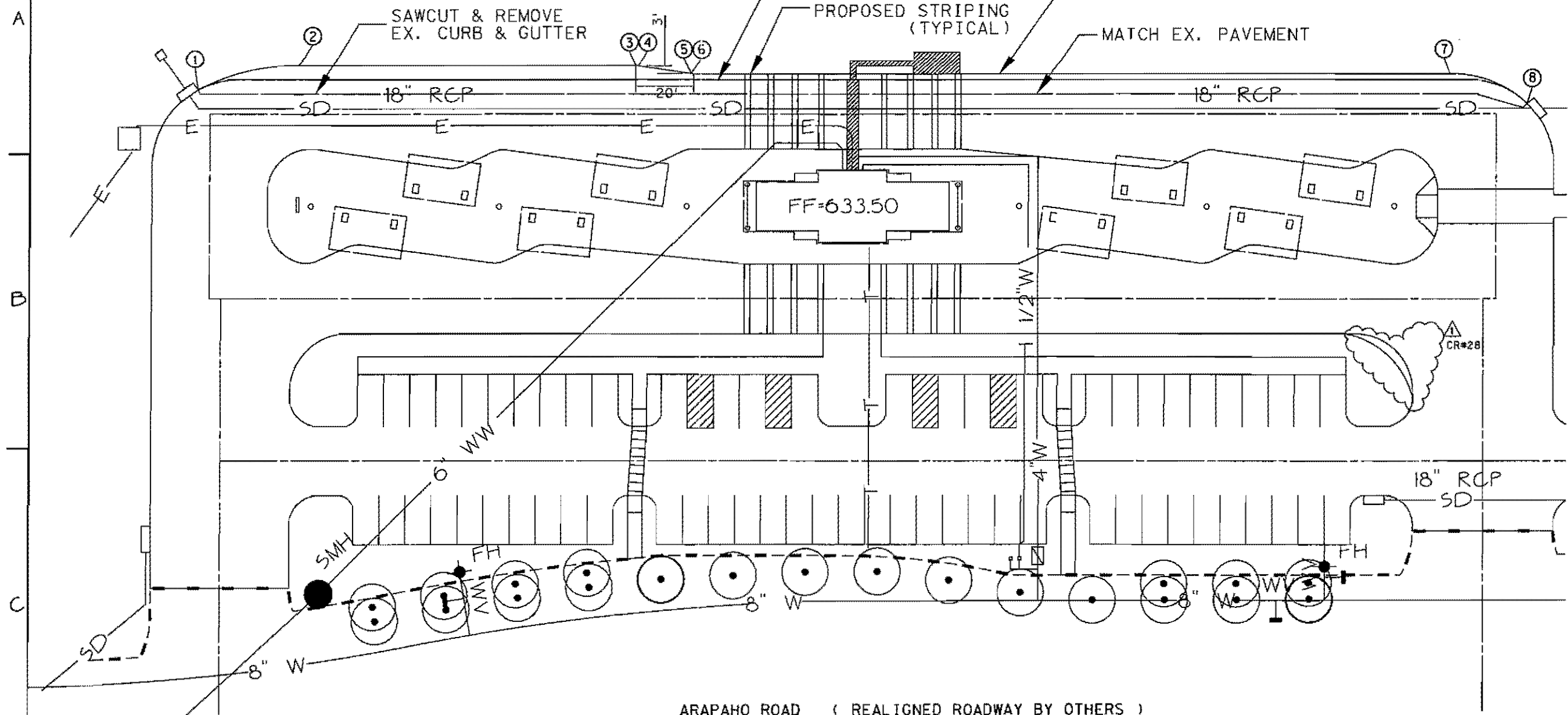
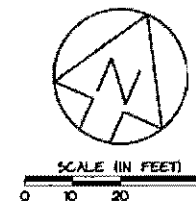
④ P.T. STA.  
N. = 11066.69  
E. = 12343.99  
R. = 5'

⑤ P.C. STA.  
N. = 11071.43  
E. = 12362.09

⑥ P.T. STA.  
N. = 11071.68  
E. = 12362.80  
R. = 5'

⑦ P.C. STA.  
N. = 11176.39  
E. = 12602.82

⑧ P.T. STA.  
N. = 11177.60  
E. = 12631.36  
R. = 38.38'



- NOTES:**
1. ALL WORK TO BE DONE BY THIS CONTRACTOR IS DELINEATED BY PROJECT LIMITS.
  2. ALL DIMENSIONS TO CURBS ARE TO FACE OF CURB.
  3. ALL WORK OUTSIDE PROJECT LIMIT LINE ARE NOT IN CONTRACT (NIC) UNLESS OTHERWISE SHOWN.
  4. FOR BUS BAY LENGTH REFER TO DETAIL 3/CC6-0002.

ARAPAHO ROAD ( REALIGNED ROADWAY BY OTHERS )

**PRELIMINARY**  
SUBMITTED FOR REVIEW  
BY Charles E. Bennett, P.E., P.E. 68613  
**Turner Collie & Braden Inc.**  
Date: NOVEMBER 2001  
NOT FOR CONSTRUCTION, BIDDING OR PERMITTING PURPOSES

CONTRACT SHEET NO. 4 OF 12

REV	DATE	DESCRIPTION	BY	ENG	CHK	APP	REV	DATE	DESCRIPTION	BY	ENG	CHK	APP

TURNER COLLIE & BRADEN INC.  
LINDA TYCHER & ASSOCIATES  
ARS ENGINEERS INC.

**DART PROJECT**

SCALE: 1"=20'  
DRAWN: J. RATCLIFF  
DESIGNED: J. RATCLIFF  
CHECKED: C. BENNETT  
IN CHARGE: G. SHIPPY  
DATE: NOVEMBER 2001

**ADDISON TRANSIT CENTER**  
EXISTING BUS LANE EXPANSION

CONTRACT C-96000124-26 DWG NO. REV 0

**SWALE CAPACITY**

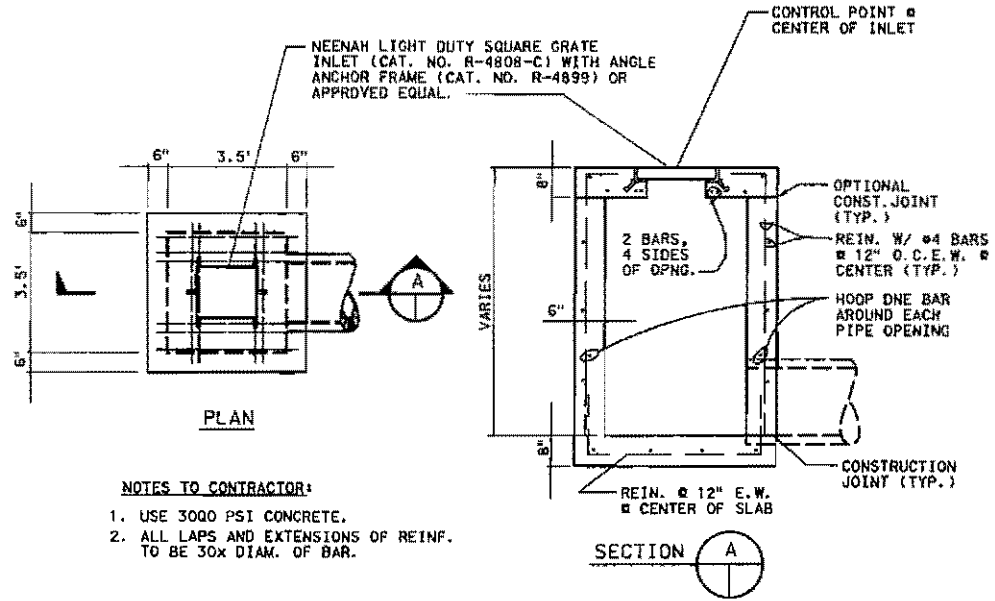
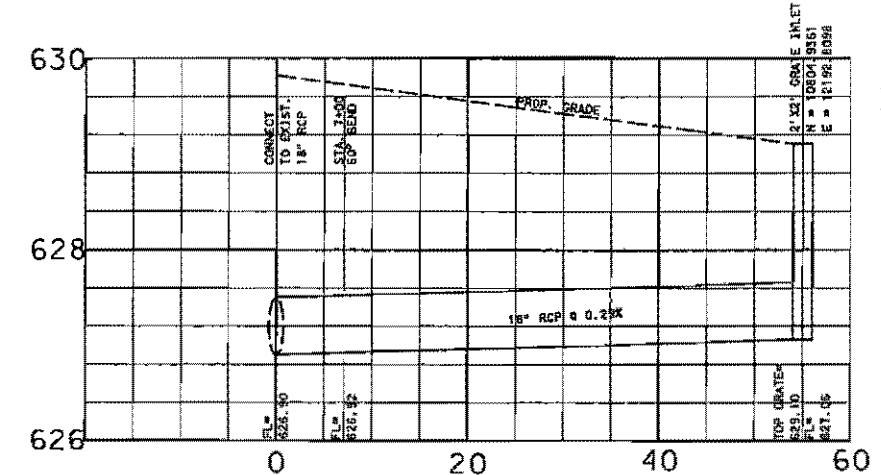
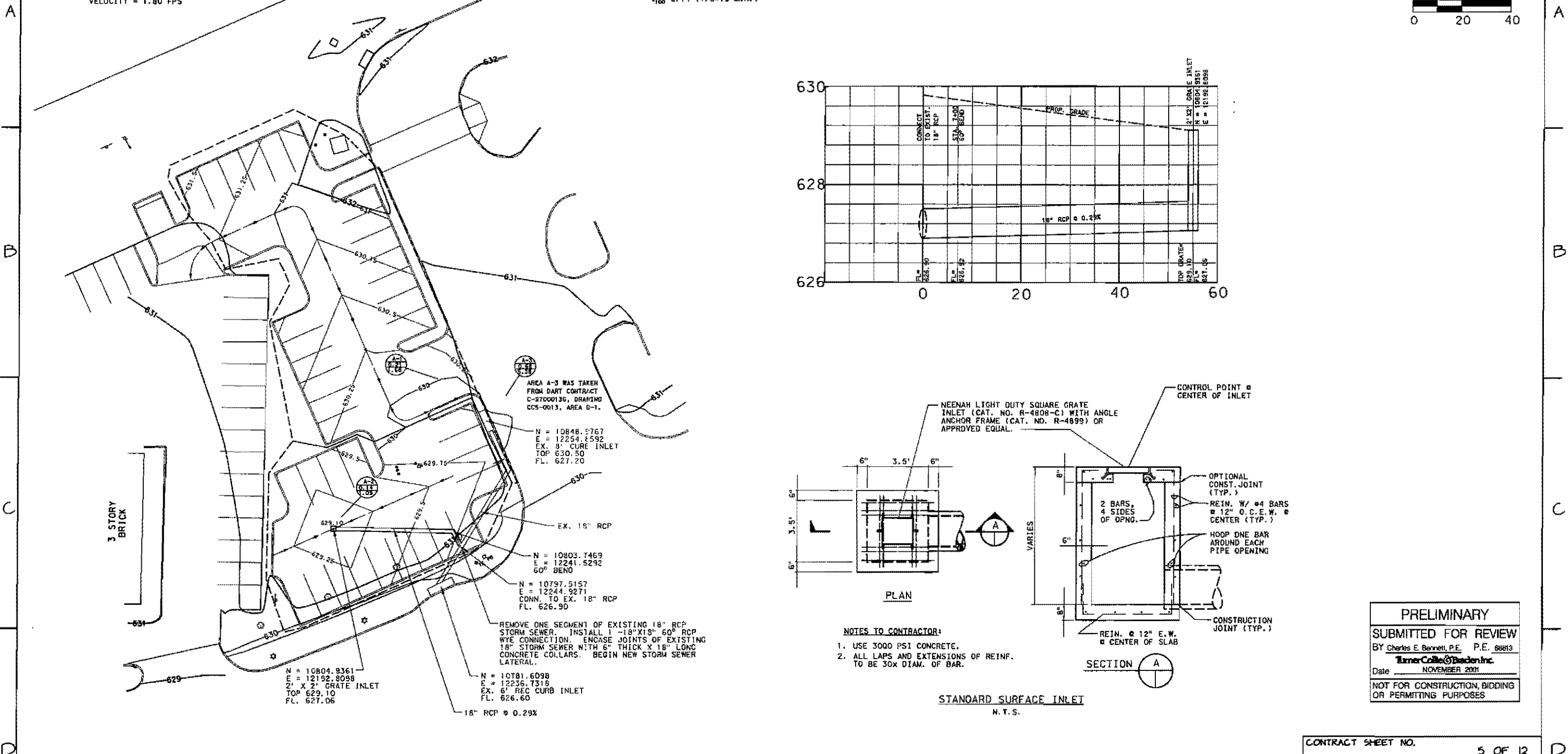
SLOPE = 0.01 FT/FT  
 DEPTH = 0.13 FT  
 DISCHARGE = 2.81 CFS  
 VELOCITY = 1.80 FPS

**LEGEND**

- DRAINAGE AREA DIVIDES
- DRAINAGE FLOW ARROWS
- DRAINAGE AREA NUMBER
- DRAINAGE AREA IN ACRES
- 100 YEAR STORM RUNOFF IN c.f.s.
- WHERE C=0.90
- 1/100=8.74 (T/C=10 MIN.)



SCALE IN FEET  
 0 20 40



- NOTES TO CONTRACTOR:**
1. USE 3000 PSI CONCRETE.
  2. ALL LAPS AND EXTENSIONS OF REINF. TO BE 30X DIAM. OF BAR.

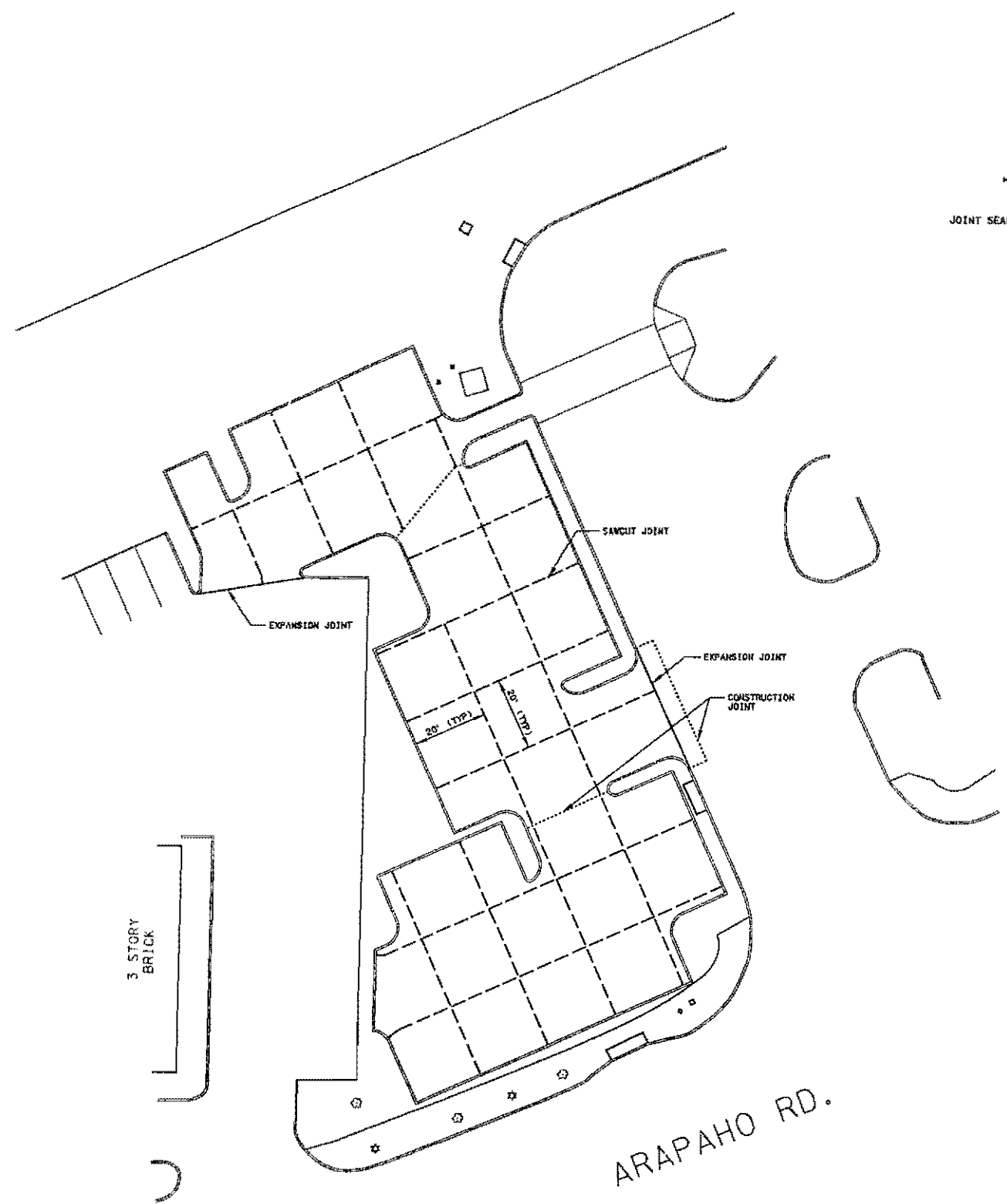
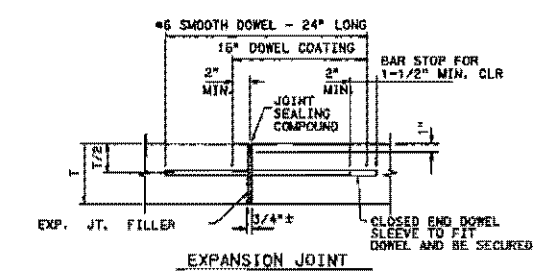
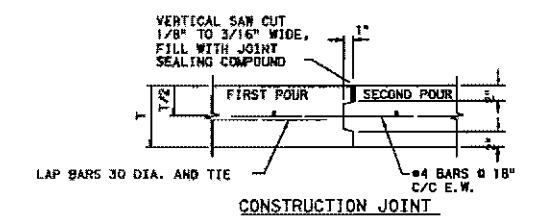
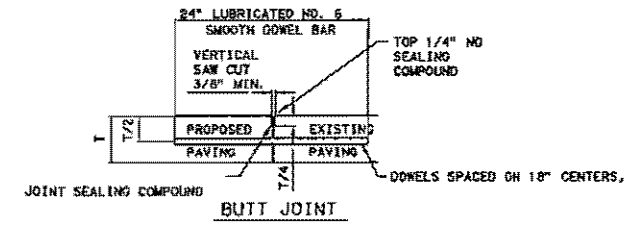
**PRELIMINARY**  
 SUBMITTED FOR REVIEW  
 BY Charles E. Bennett, P.E. P.E. 68813  
 Turner Collie & Braeden Inc.  
 Date NOVEMBER 2001  
 NOT FOR CONSTRUCTION, BIDDING OR PERMITTING PURPOSES

REV	DATE	DESCRIPTION	BY	ENG	CHK	APP	REV	DATE	DESCRIPTION	BY	ENG	CHK	APP

TURNER COLLIE & BRAEDEN INC.	LINDA TYCHER & ASSOCIATES	ARS ENGINEERS INC.		SCALE	1"=20'	CONTRACT SHEET NO. 5 OF 12 <b>ADDISON TRANSIT CENTER</b> DRAINAGE + GRADING PLAN
				DRAWN	J. RATCLIFF	
DESIGNED				J. RATCLIFF	CONTRACT	
CHECKED				G. BENNETT	DWG NO.	
IN CHARGE				G. SHIPPY	REV 0	
DATE				NOVEMBER 2001	CONTRACT C-75000124-26	



SCALE IN FEET  
0 20 40



PRELIMINARY  
SUBMITTED FOR REVIEW  
BY Charles E. Bennett, P.E., P.E. 68613  
Turner Collie & Braden Inc.  
Date NOVEMBER 2001  
NOT FOR CONSTRUCTION, BIDDING  
OR PERMITTING PURPOSES

CONTRACT SHEET NO. 6 OF 12

REV	DATE	DESCRIPTION	BY	ENG	CHK	APP	REV	DATE	DESCRIPTION	BY	ENG	CHK	APP

TURNER COLLIE & BRADEN INC.  
LINDA TYCHER & ASSOCIATES  
ARS ENGINEERS INC.

**DART PROJECT**

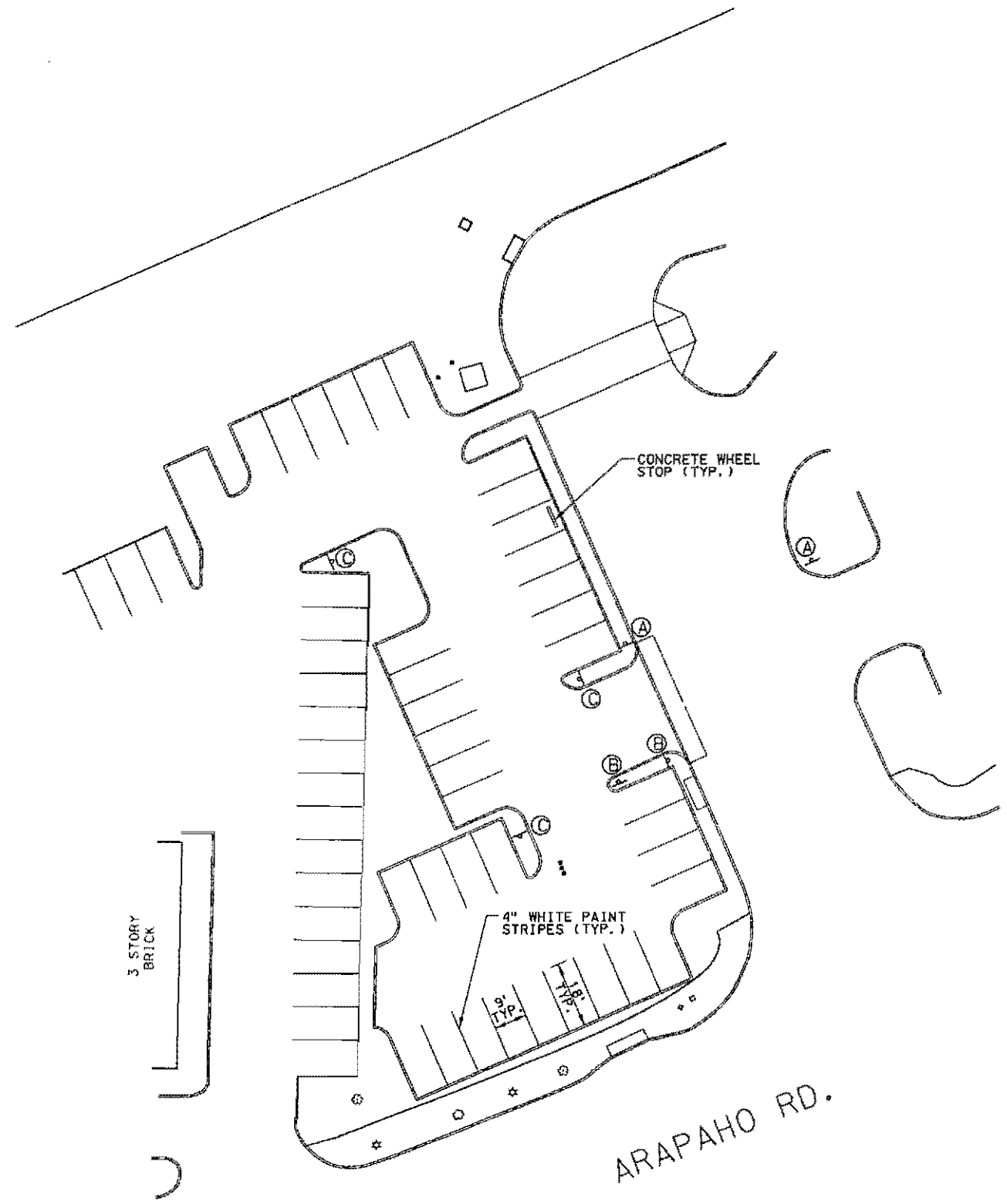
SCALE: 1/2" = 1'-0"  
DRAWN: J. RATCLIFF  
DESIGNED: J. RATCLIFF  
CHECKED: C. DENNETT  
IN CHARGE: G. SHIPPY  
DATE: NOVEMBER 2001

**ADDISON  
TRANSIT CENTER  
PAVEMENT  
JOINT LAYOUT**

CONTRACT C-96000124-28 DWG NO. REV 0



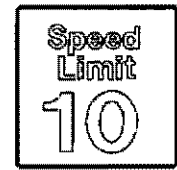
SCALE IN FEET  
0 20 40



S3.21  
A



S3.10  
B



S3.16  
C

PRELIMINARY  
SUBMITTED FOR REVIEW  
BY Charles E. Bennett, P.E. P.E. 68613  
Turner Collie & Braden Inc.  
Date NOVEMBER 2001  
NOT FOR CONSTRUCTION, BIDDING  
OR PERMITTING PURPOSES

CONTRACT SHEET NO. 7 OF 12

ADDISON  
TRANSIT CENTER  
PAVEMENT MARKING AND  
SIGNING PLAN

DART PROJECT



SCALE 1"=20'  
DRAWN J. RATCLIFF  
DESIGNED J. RATCLIFF  
CHECKED C. BENNETT  
IN CHARGE S. SHIPPY  
DATE NOVEMBER 2001

TURNER COLLIE & BRADEN INC.  
LINDA TYCHER & ASSOCIATES  
ARS ENGINEERS INC.

CONTRACT C-96000124-28 DWG NO. REV 0

REV	DATE	DESCRIPTION	BY	ENG	CHK	APP	REV	DATE	DESCRIPTION	BY	ENG	CHK	APP

1 2 3 4 5 6 7 8

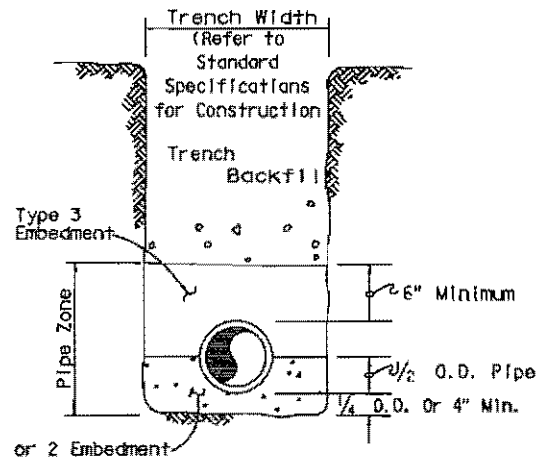


CRUSHED LIMESTONE, TYPE 1, EMBEDMENT: Crushed limestone shall consist of durable particles of crushed stone ranging in size from 3/4" to 1 1/4" with percent of wear not exceeding 35%. The gradation based on ASTM D448 size 67 use as follows:

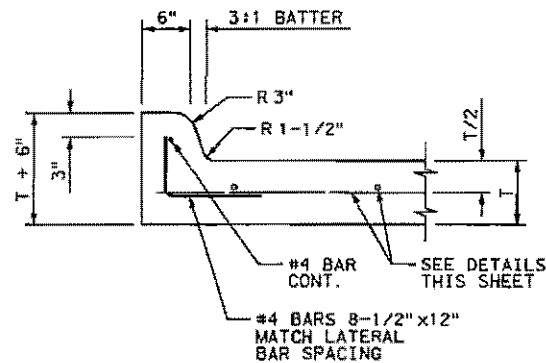
Sieve Size	% By Weight Passing
1"	100
3/4"	90 - 100
3/8"	20 - 55
No. 4	0 - 10
No. 8	0 - 5

GRAVEL, TYPE 2, EMBEDMENT: Gravel for embedment and/or encasement shall be washed gravel ranging in size from 3/4" diameter to 1 1/2" inch diameter meeting the requirements of ASTM designation C33, Gradation 67. The material shall be free from clay and organic material.

GRANULAR, TYPE 3, EMBEDMENT: Pit run granular embedment material shall be free flowing sand or mixed sand and pea gravel free from large stones, clay and organic material. The material may be an inferior grade of pit run or blow sand not normally considered satisfactory for concrete aggregate and may be used directly from pits without processing, provided it complies with the qualities described herein. The material shall be such that when wet it will not form a mud ball or tend to clog together. The material shall have 100% passing one inch (1") sieve and the plasticity index of that part passing the sieve is obtained from the City.

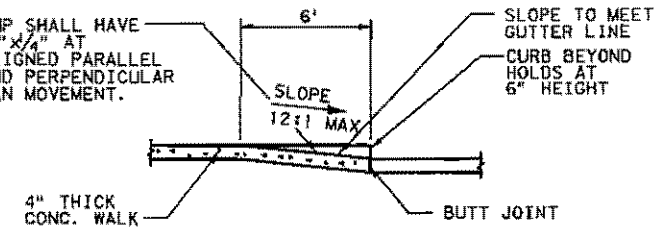


PIPE EMBEDMENT DETAIL  
Not To Scale



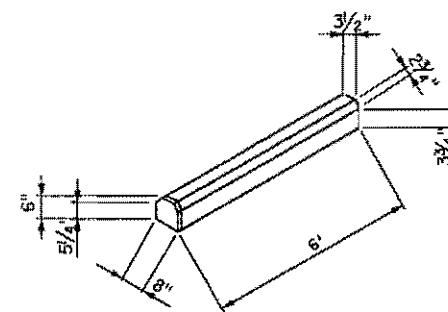
6" CURB  
DETAIL  
SCALE: N.T.S. CC6-0003

BARRIER FREE RAMP SHALL HAVE GROOVED FINISH 1/4" X 1/4" AT 4" ON CENTER, ALIGNED PARALLEL TO EACH OTHER AND PERPENDICULAR TO THE PEDESTRIAN MOVEMENT.



BARRIER FREE RAMP

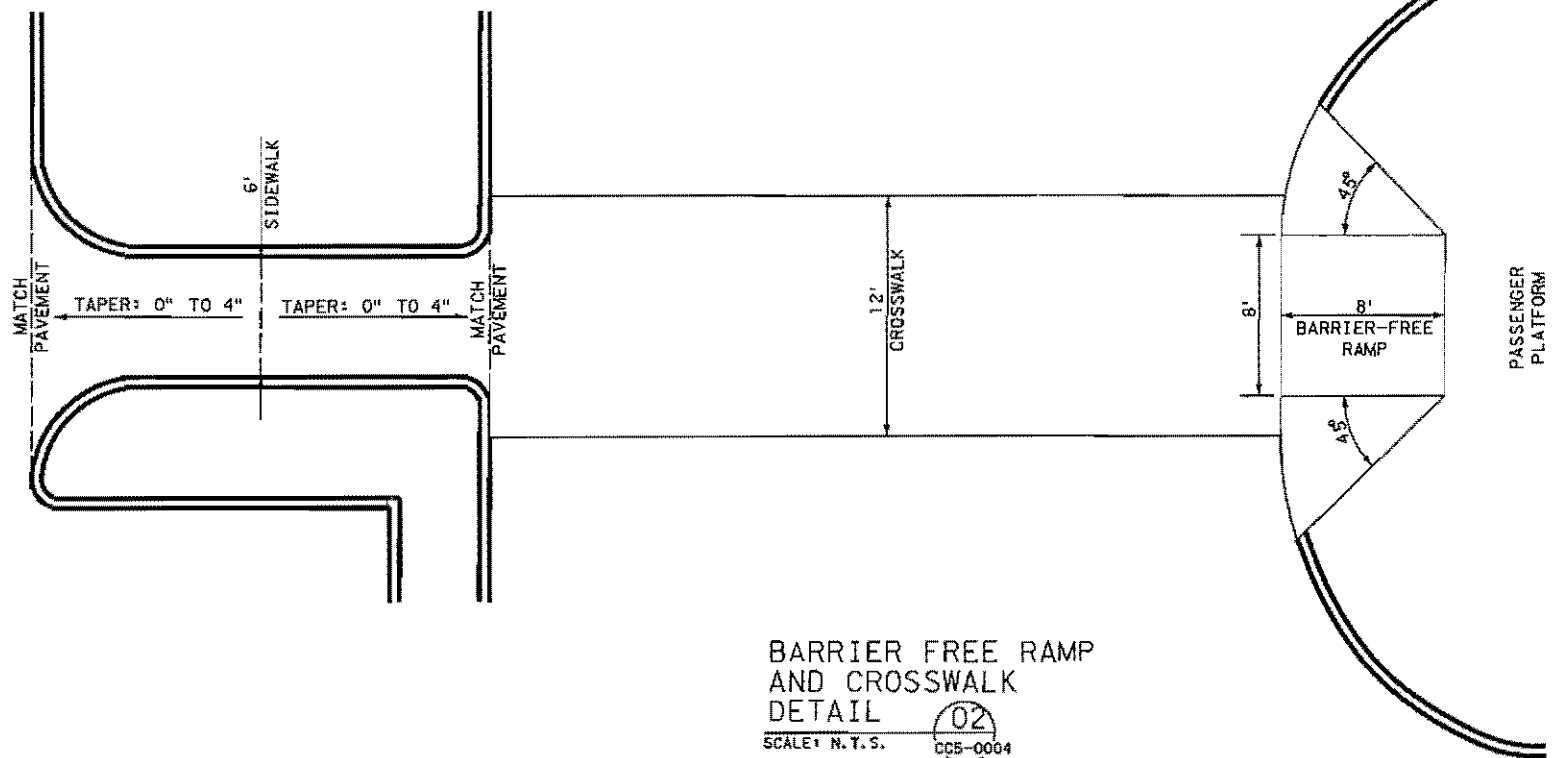
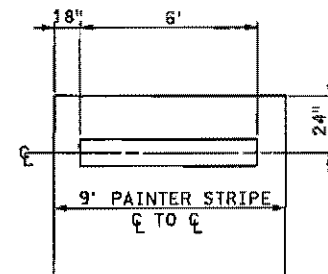
SECTION A  
SCALE: N.T.S.



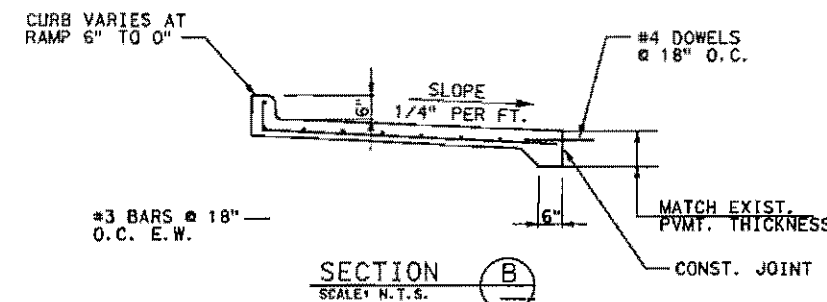
2 - 5' 6" #4 REINF. RODS

24" LONG 3/8" STEEL ANCHOR RODS (2 PER BARRIER)

CONCRETE WHEEL STOP  
SCALE: N.T.S.



BARRIER FREE RAMP  
AND CROSSWALK  
DETAIL  
SCALE: N.T.S. CC5-0004



SECTION B  
SCALE: N.T.S.

PRELIMINARY  
SUBMITTED FOR REVIEW  
BY Charles E. Bennett, P.E. P.E. 68613  
Turner Collie & Braden Inc.  
Date NOVEMBER 2001  
NOT FOR CONSTRUCTION, BIDDING OR PERMITTING PURPOSES

T: \\TRANS\DHARTHOVA\T028-ADDISON\MI CROSTATION\SHEETS\DETAILS.DGN 11/01/01

REV	DATE	DESCRIPTION	BY	ENG	CHK	APP	REV	DATE	DESCRIPTION	BY	ENG	CHK	APP

TURNER COLLIE & BRADEN INC. LINDA YCHER & ASSOCIATES ARS ENGINEERS INC.		SCALE: 1/8" = 1'-0"	CONTRACT SHEET NO. 8 OF 12
		DRAWN: J. RATCLIFF DESIGNED: J. RATCLIFF CHECKED: C. BENNETT IN CHARGE: G. SHIPPY DATE: NOVEMBER 01	
CONTRACT C-95000124-28	DWG NO.	REV 0	

SITE DESCRIPTION

PROJECT LIMITS:

AN APPROXIMATE 4 SIDED PARCEL OF LAND SITUATED BETWEEN THE FOLLOWING: EXISTING DART TRANSIT CENTER, ARAPAHO ROAD, ADDISON ROAD AND A FUTURE DART RAIL LINE.

PROJECT DESCRIPTION:

CONSTRUCTION OF A 13,000 S.F. PAVED PARKING LOT WITH PARK LIKE LANDSCAPING, GRADING, DRAINAGE, SUBGRADE PREPARATION, CURBING, CONCRETE PAVING, SIGNING, AND PAVEMENT MARKINGS. UPGRADE EXISTING UTILITIES AND STORM DRAINAGE IMPROVEMENTS.

MAJOR SOIL DISTURBING ACTIVITIES:

CLEARING AND GRUBBING, GRADING, EXCAVATION, COMPACTION, DRIVEWAYS AND PARKING LOTS CONCRETE FORMWORK, STORM SEWER CONSTRUCTION, EROSION AND SEDIMENT CONTROLS, AND TOPSOIL WORK FOR FINAL PLANTING AND SEEDING.

TOTAL PROJECT AREA: 0.514 ACRES

TOTAL AREA TO BE DISTURBED: 0.396 ACRES

WEIGHTED RUNOFF COEFFICIENT (AFTER CONSTRUCTION): 0.68

EXISTING CONDITION OF SOIL & VEGETATIVE COVER AND % OF EXISTING VEGETATIVE COVER:

THE SITE IS GENERALLY COVERED WITH SHORT GRASS. THE SITE IS LOCATED IN AN AREA UNDERLAIN BY DEPOSITS OF THE AUSTIN CHALK LIMESTONE FORMATION CONSISTS OF GRAY CHALKY LIMESTONE WITH SOME SHALE AND PARTINGS.

NAME OF RECEIVING WATERS:

THE PROJECT DRAINS INTO THE WHITE ROCK CREEK VIA UNDERGROUND STORM SEWERS AND OPEN CHANNELS.

EROSION AND SEDIMENT CONTROLS

SOIL STABILIZATION PRACTICES:

- TEMPORARY SEEDING
- PERMANENT PLANTING, SODDING, OR SEEDING
- MULCHING
- SOIL RETENTION BLANKET
- BUFFER ZONE
- PRESERVATION OF NATURAL RESOURCES

OTHER:

DISTURBED AREAS ON WHICH CONSTRUCTION ACTIVITY HAS CEASED (TEMPORARILY OR PERMANENTLY) SHALL BE STABILIZED WITHIN 14 DAYS UNLESS ACTIVITIES ARE SCHEDULED TO RESUME WITHIN 21 DAYS.

( ) DENOTES NOTES UNDER STRUCTURAL PRACTICES: OTHER.

EROSION AND SEDIMENT CONTROLS

STRUCTURAL PRACTICES:

- SILT FENCES
- HAY BALES
- ROCK BERMS
- DIVERSION, INTERCEPTOR, OR PERIMETER DIKES
- DIVERSION, INTERCEPTOR, OR PERIMETER SWALES
- DIVERSION DIKE AND SWALE COMBINATIONS
- PIPE SLOPE DRAINS
- PAVED FLUMES
- ROCK BEDDING AT CONSTRUCTION EXIT
- TIMBER MATTING AT CONSTRUCTION EXIT
- CHANNEL LINERS
- SEDIMENT TRAPS
- SEDIMENT BASIN
- STORM INLET SEDIMENT TRAP
- STONE OUTLET STRUCTURES
- CURBS AND GUTTERS
- STORM SEWERS
- VELOCITY CONTROL DEVICES

OTHER:

NOTES:

1. INSTALL SOIL RETENTION BLANKETS ON ALL EXPOSED SLOPES GREATER THAN 3:1 AT THE DIRECTION OF THE DART ENGINEER, OR AS SPECIFICALLY SHOWN ON THE DRAWINGS.
2. DIVERSION, INTERCEPTOR, OR PERIMETER DIKES AND/OR SWALES SHALL BE INSTALLED AT THE DIRECTION OF THE DART ENGINEER, OR AS SPECIFICALLY SHOWN ON THE DRAWINGS.
3. THE CONTRACTOR MAY BE REQUIRED BY THE DART ENGINEER TO INSTALL OTHER STRUCTURAL CONTROL MEASURES NOT NOTED ABOVE.

NARRATIVE - SEQUENCE OF CONSTRUCTION (STORM WATER MANAGEMENT) ACTIVITIES:

THE ORDER OF ACTIVITIES SHALL BE AS FOLLOWS:

1. INSTALL INLET PROTECTION FILTERS AT EXISTING INLETS IN EXISTING PARKING LOT AND ALONG ARAPAHO RD. CONSTRUCT STABILIZED CONSTRUCTION ENTRANCES.
2. INSTALL SILT FENCES, AND/OR CURB INLET SEDIMENT FILTERS:
  - A. AROUND TOPSOIL STOCKPILES AND AT EMBANKMENT AND EXCAVATION LOCATIONS.
  - B. AROUND ALL NEW AND TEMPORARY INLETS AS SOON AS THEY ARE FUNCTIONAL.
3. GRADE THE PROJECT TO SUBGRADE. TEMPORARILY SEED OR MULCH THE DISTURBED AREAS UNLESS CONSTRUCTION ACTIVITY IS TO RESUME WITHIN 21 DAYS.
4. INSTALL SOIL RETENTION BLANKETS ON ALL EXPOSED SLOPES GREATER THAN 3:1.
5. CONSTRUCT IMPROVEMENTS AND DETOURS WITHIN PROJECT LIMITS.
6. APPLY PERMANENT SEEDING WHERE APPLICABLE.
7. WHEN ALL CONSTRUCTION ACTIVITY IS COMPLETE AND THE SITE IS STABILIZED AND APPROVED BY THE ENGINEER, REMOVE ALL TEMPORARY STRUCTURAL CONTROLS AND RE-SEED ANY AREAS DISTURBED BY THEIR REMOVAL. ANY PERIMETER CONTROLS SHALL REMAIN IN PLACE UNTIL FINAL STABILIZATION OF THE AREA UPSTREAM.

STORM WATER MANAGEMENT:

STORM WATER RUNOFF WILL BE COLLECTED BY THE ON-SITE GRATE INLETS, CURB INLETS, AND UNDERGROUND STORM SEWER SYSTEMS ALONG QUORUM DR. AND ARAPAHO RD. THESE SYSTEMS WILL CARRY DRAINAGE WITHIN THE DART PROPERTY TO THE TOWN OF ADDISON STORM SEWER SYSTEMS. PERMANENT EROSION CONTROLS INCLUDE HYDRAULIC DESIGN TO LIMIT STRUCTURE OUTLET VELOCITIES AND FINAL GRADING GENERALLY CONSISTING OF 6:1 OR FLATTER SLOPES WITH A PERMANENT VEGETATIVE COVER.

OTHER EROSION AND SEDIMENT CONTROLS:

MAINTENANCE:

ALL EROSION AND SEDIMENT CONTROLS WILL BE MAINTAINED IN GOOD WORKING ORDER. IF A REPAIR IS NECESSARY, IT WILL BE DONE AT THE EARLIEST DATE POSSIBLE, BUT NO LATER THAN 7 CALENDAR DAYS AFTER THE SURROUNDING EXPOSED GROUND HAS DRIED SUFFICIENTLY TO PREVENT FURTHER DAMAGE FROM HEAVY EQUIPMENT. THE AREAS ADJACENT TO CREEKS AND DRAINAGE WAYS SHALL HAVE PRIORITY FOLLOWED BY DEVICES PROTECTING STORM SEWER INLETS.

INSPECTION:

AN INSPECTION WILL BE PERFORMED BY A DART INSPECTOR EVERY WEEK AS WELL AS AFTER EVERY RAIN OF HAL INCH OR MORE (AS RECORDED ON A RAIN GAUGE TO BE LOCATED AT THE PROJECT SITE). AN INSPECTION AND MAINTENANCE REPORT WILL BE MADE PER EACH INSPECTION. BASED ON THE INSPECTION RESULTS, THE CONTROLS SHALL BE REVISED PER THE INSPECTION REPORT.

WASTE MATERIALS:

ALL WASTE MATERIALS WILL BE COLLECTED IN A SECURELY LIDDED METAL DUMPSTER. THE DUMPSTER WILL MEET ALL STATE AND LOCAL CITY SOLID WASTE MANAGEMENT REGULATIONS. ALL TRASH AND CONSTRUCTION DEBRIS FROM THE SITE WILL BE DEPOSITED IN THE DUMPSTER. THE DUMPSTER WILL BE EMPTIED AS NECESSARY OR AS REQUIRED BY LOCAL REGULATION, AND THE TRASH WILL BE HAULED TO A LOCAL DUMP. NO CONSTRUCTION WASTE MATERIAL WILL BE BURIED ON SITE.

HAZARDOUS WASTE (INCLUDING SPILL REPORTING):

AT A MINIMUM, ANY PRODUCTS IN THE FOLLOWING CATEGORIES ARE CONSIDERED TO BE HAZARDOUS: PAINTS, ACIDS FOR CLEANING MASONRY SURFACES, CLEANING SOLVENTS, ASPHALT PRODUCTS, CHEMICAL ADDITIVES FOR SOIL STABILIZATION, OR CONCRETE CURING COMPOUNDS AND ADDITIVES. IN THE EVENT OF A SPILL WHICH MAY BE HAZARDOUS, THE AUTHORITY SHOULD BE CONTACTED IMMEDIATELY.

SANITARY WASTE:

ALL SANITARY WASTE WILL BE COLLECTED FROM THE PORTABLE UNITS AS NECESSARY OR AS REQUIRED BY LOCAL REGULATION BY A LICENSED SANITARY WASTE MANAGEMENT CONTRACTOR.

OFFSITE VEHICLE TRACKING:


- HAUL ROADS DAMPENED FOR DUST CONTROL
- LOADED HAUL TRUCKS TO BE COVERED WITH TARPULIN
- EXCESS DIRT ON ROAD REMOVED DAILY
- STABILIZED CONSTRUCTION ENTRANCE

OTHER:

DISPOSAL AREAS, STOCKPILES, AND HAUL ROADS SHALL BE CONSTRUCTED IN A MANNER THAT WILL MINIMIZE AND CONTROL THE AMOUNT OF SEDIMENT THAT MAY ENTER RECEIVING WATERS. DISPOSAL AREAS SHALL NOT BE LOCATED IN ANY WETLAND, WATERBODY, OR STREAMBED. CONSTRUCTION STAGING AREAS AND HAUL ROADS SHALL BE CONSTRUCTED IN A MANNER TO MINIMIZE THE RUNOFF OF POLLUTANTS. ALL WATERWAYS SHALL BE CLEARED AS SOON AS PRACTICABLE OR TEMPORARY EMBANKMENTS, TEMPORARY BRIDGES, MATTING, FALSEWORK, PILING, DEBRIS OR OTHER OBSTRUCTIONS PLACED DURING CONSTRUCTION OPERATIONS THAT ARE NOT A PART OF THE FINISHED WORK.

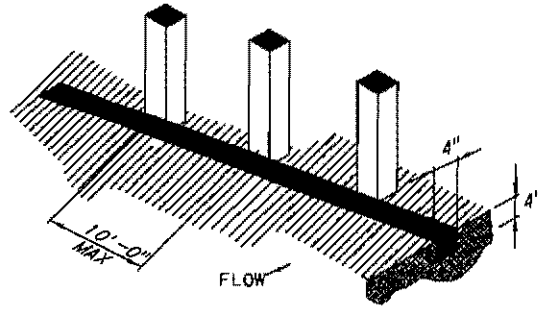
PRELIMINARY  
 SUBMITTED FOR REVIEW  
 BY Charles E. Bennett, P.E. P.E. 68813  
 Turner Collie & Braden Inc.  
 Date: NOVEMBER 2001  
 NOT FOR CONSTRUCTION, BIDDING  
 OR PERMITTING PURPOSES

CONTRACT SHEET NO. 9 OF 12

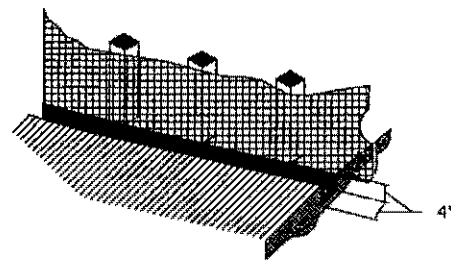
<table border="0"> <tr> <td colspan="5">TURNER COLLIE &amp; BRADEN INC.</td> <td colspan="5">LINDA TYCHER &amp; ASSOCIATES</td> <td colspan="5">ARS ENGINEERS INC.</td> </tr> </table>										TURNER COLLIE & BRADEN INC.					LINDA TYCHER & ASSOCIATES					ARS ENGINEERS INC.					<p><b>DART PROJECT</b></p> 					<p>SCALE: N.T.S.</p> <p>DRAWN: J. RATCLIFF</p> <p>DESIGNED: J. RATCLIFF</p> <p>CHECKED: C. DENNETT</p> <p>IN CHARGE: G. SHIPPY</p> <p>DATE: NOVEMBER 2001</p>					<p>ADDISON TRANSIT CENTER SWPPP GENERAL NOTES</p>				
TURNER COLLIE & BRADEN INC.					LINDA TYCHER & ASSOCIATES					ARS ENGINEERS INC.																													
REV	DATE	DESCRIPTION	BY	ENG	CHK	APP	REV	DATE	DESCRIPTION	BY	ENG	CHK	APP	CONTRACT	DWG NO.	REV																							
														C-96000124-28		0																							

REINFORCED FILTER FABRIC BARRIER

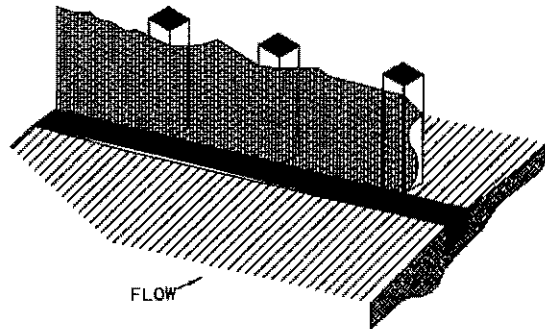
1. SET POSTS AND EXCAVATE 4" X 4" TRENCH UPSLOPE ALONG LINE OF POSTS.



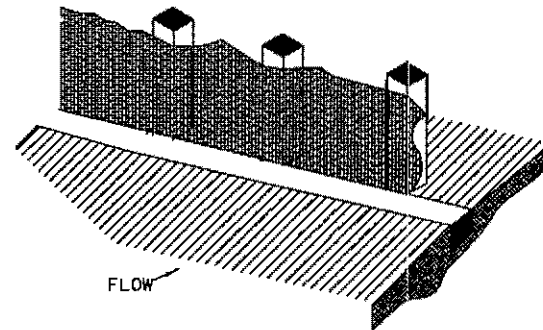
2. SECURE WIRE FENCING TO POSTS.



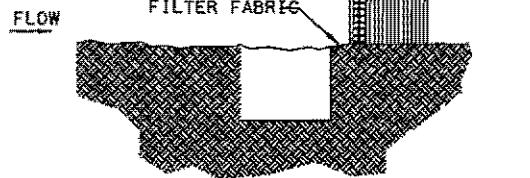
3. ATTACH FILTER MATERIAL TO WIRE FENCE AND EXTEND IT INTO THE TRENCH



4. BACKFILL AND COMPACT THE EXCAVATED SOIL.



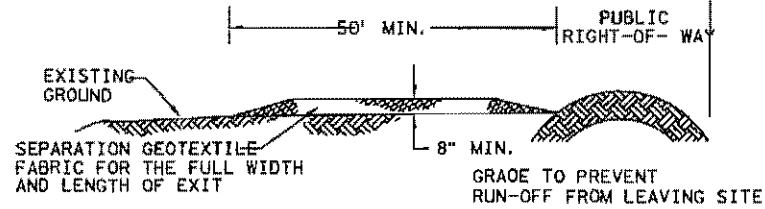
EXTENSION OF FABRIC INTO TRENCH



ITEM 4311  
REINFORCED  
FILTER FABRIC BARRIER

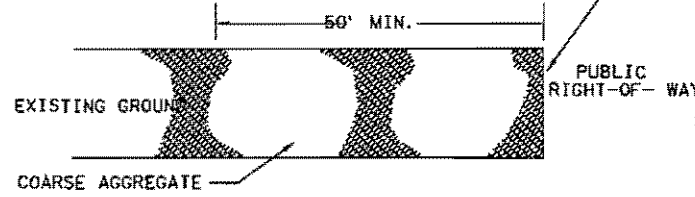
GENERAL NOTES

1. WOVEN WIRE FENCE TO BE FASTENED SECURELY TO FENCE POSTS WITH STAPLES.
2. FILTER CLOTH TO BE FASTENED SECURELY TO WOVEN WIRE FENCE, WITH TIES SPACED EVERY 24 INCHES AT TOP AND MIDSECTION.
3. WHEN TWO SECTIONS OF FILTER CLOTH ADJOIN EACH OTHER, THEY SHALL BE OVERLAPPED 6 INCHES AT THE POSTS, AND FOLDED.



PROFILE

PROVIDE APPROPRIATE TRANSITION BETWEEN STABILIZED CONSTRUCTION ENTRANCE AND PUBLIC RIGHT-OF-WAY



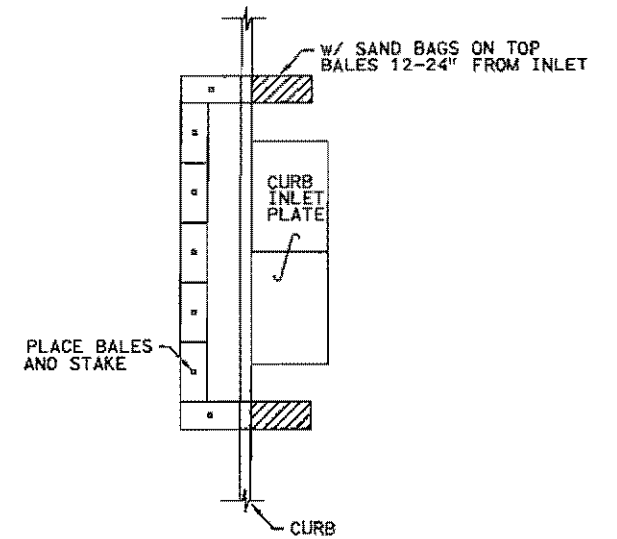
PLAN VIEW

GENERAL NOTES

1. LENGTH SHALL BE AS SHOWN ON THE CONSTRUCTION DRAWINGS, BUT NOT LESS THAN 50 FEET.
2. THICKNESS SHALL BE NOT LESS THAN 8 INCHES.
3. WIDTH SHALL NOT BE LESS THAN FULL WIDTH OF ALL POINTS OF INGRESS OR EGRESS.
4. STABILIZATION FOR OTHER AREAS SHALL HAVE THE SAME AGGREGATE THICKNESS AND WIDTH REQUIREMENTS AS THE STABILIZED CONSTRUCTION EXIT, UNLESS OTHERWISE SHOWN ON THE CONSTRUCTION DRAWINGS.
5. STABILIZED AREA MAY BE WIDEN OR LENGTHEN TO ACCOMMODATE A TRUCK WASHING AREA, WHEN SHOWN ON THE CONSTRUCTION DRAWING. AN OUTLET SEDIMENT TRAP MUST BE PROVIDED FOR THE TRUCK WASHING AREA.

ITEM 4711  
STABILIZED CONSTRUCTION EXIT

STRAW BALE CURB INLET PROTECTION BARRIER



BMP 4. 5. 1. 1.  
INLET PROTECTION BARRIERS

PRELIMINARY

SUBMITTED FOR REVIEW

BY Charles E. Bennett, P.E. P.E. 68613

Turner Collie & Braden Inc.

Date NOVEMBER 2001

NOT FOR CONSTRUCTION, BIDDING OR PERMITTING PURPOSES

CONTRACT SHEET NO. 10 OF 12

DART PROJECT



SCALE	NTS.
DRAWN	J. RATCLIFF
DESIGNED	J. RATCLIFF
CHECKED	G. DENNETT
IN CHARGE	G. SHIPPY
DATE	NOVEMBER 2001

ADDISON  
TRANSIT CENTER  
SWPPP STANDARD  
DETAILS

CONTRACT C-95000124-25 DWG NO. REV 0

REV	DATE	DESCRIPTION	BY	ENG	CHK	APP	REV	DATE	DESCRIPTION	BY	ENG	CHK	APP
△							△						
△							△						
△							△						
△							△						
△							△						
△							△						

TURNER COLLIE & BRAEDEN INC.

LINDA TYCHER & ASSOCIATES

ARS ENGINEERS INC.

DART PROJECT



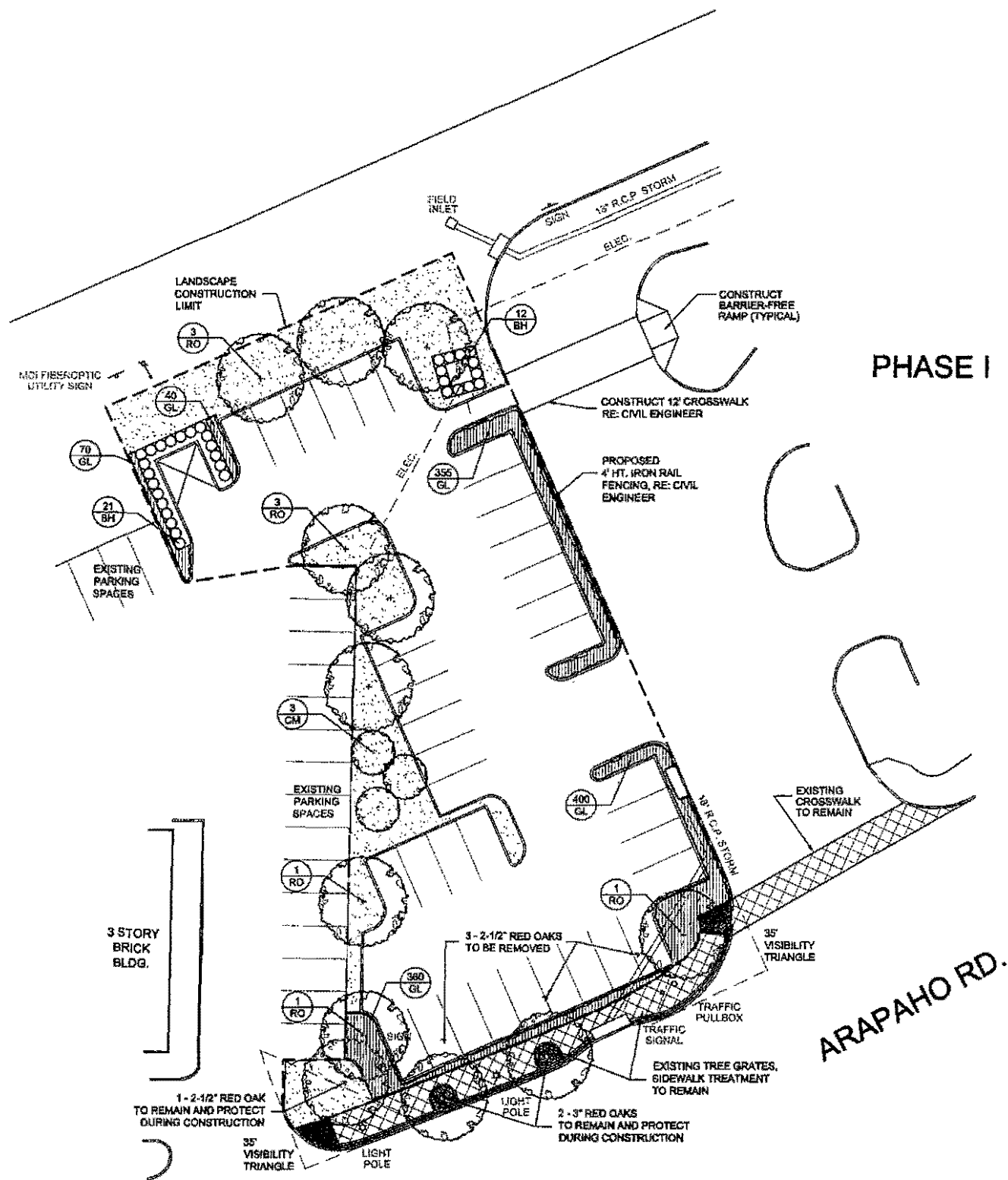
SCALE	NTS.
DRAWN	J. RATCLIFF
DESIGNED	J. RATCLIFF
CHECKED	G. DENNETT
IN CHARGE	G. SHIPPY
DATE	NOVEMBER 2001

ADDISON  
TRANSIT CENTER  
SWPPP STANDARD  
DETAILS

CONTRACT C-95000124-25 DWG NO. REV 0

CITY OF ADDISON ARTICLE XXI LANDSCAPING REGULATIONS REVIEW:

REQUIRED	PROVIDED
GROSS SITE LANDSCAPE: MIN. TWENTY PERCENT (20%), INCLUDES INTERIOR/EXTERIOR PARKING LANDSCAPE 10,400 S.F. LOT X .20 = 3,880 S.F. LANDSCAPE	5,888 S.F. GROSS SITE LANDSCAPE = 30%
STREET LANDSCAPE BUFFER: MIN. 20' DEPTH ALONG ENTIRE STREET FRONTAGE - MAY INCLUDE TOWN RIGHT-OF-WAY	EXISTING WALK AND TREE GRATES REDUCE
STREET FRONTAGE TREES: WITHIN BUFFER/RIGHT-OF-WAY, ONE (1) 4" CALIPER TREE PER 20 L.F. OF FRONTAGE, SETBACK 2'-6" FROM CURB 110 L.F. STREET FRONTAGE/20 = 5 TREES	5 STREET FRONTAGE TREES
STREET FRONTAGE SHRUBS: WITHIN BUFFER/R.O.W., EIGHT (8) 5 GAL. SHRUBS PER 20 L.F. OF FRONTAGE 110 L.F. STREET FRONTAGE/20 X 8 = 40 SHRUBS	SPACE RESTRICTION/CAR OVERHANG - UTILIZE GREEN URIOPE GROUNDCOVER
TREE PLANTING AREAS: MIN. 6' WIDE, MIN. 60 S.F.	MIN. 6' WIDE, MIN. 60 S.F. TREE PLANTING AREAS
VISIBILITY TRIANGLES: 35' BACK OF INTERSECTING CURB LINES - SINGLE TRUNK TREES WITH LIMBS PRUNED TO 6' HT., SHRUBS MAX. 1'-6" HT.	ALL TREES WITHIN VISIBILITY TRIANGLES HAVE LIMBS PRUNED TO 6' HT., SHRUBS ARE MAX. 1'-6" HT.
PARKING LOT SCREENING: BERM/SHRUBS OR WALL/SHRUBS, 3'-6" TOTAL HT. ABOVE PARKING SURFACE ALONG ENTIRE STREET FRONTAGE, SHRUBS - DOUBLE STAGGERED ROW, 3'-0" O.C.; 18' MIN. HT. AT PLANTING, 30' HT. WITHIN 2 YEARS	PARKING LOT SCREENING SHRUBS PROHIBITED - SPACE RESTRICTIONS
PARKING LOT PERIMETER LANDSCAPING: MIN. 5' PERIMETER STRIP FOR SITE GREATER THAN 10,000 S.F. (10,400 S.F. LOT)	MIN. 4' WIDE PERIMETER LANDSCAPE STRIP
PARKING LOT PERIMETER TREES/SHRUBS: ONE (1) 4" CAL. CANOPY TREE AND EIGHT (8) 5 GAL. SHRUBS/35 L.F. OF PERIMETER	PARKING LOT IS A CONTINUATION OF PHASE I AND ABUTTS ADJOINING PARKING LOT
INTERIOR PARKING LOT LANDSCAPING: FIVE PERCENT (5%) OF LOTS 7,000 S.F. - 49,999 S.F. TO BE LANDSCAPED 18,250 S.F. PARKING LOT X .05 = 812 S.F. LANDSCAPE	3,480 S.F. PARKING LOT LANDSCAPE = 21%
PARKING LOT TREES: ONE (1) LARGE 4" CAL SHADE TREE PER TEN (10) PARKING SPACES; NO SPACE FARTHER THAN 50' FROM A SHADE TREE. ON 50% OF REQUIRED TREES, MAY SUBSTITUTE 2 ORNAMENTAL AND/OR EVERGREEN TREES FOR 1 SHADE TREE 36 PARKING SPACES/10 = 4 TREES	6 - 4" SHADE TREES 3 - 8' HT. ORNAMENTAL TREES NO SPACE FURTHER THAN 50' FROM A SHADE



PHASE I

ARAPAHO RD.



SCALE (IN FEET)  
0 10 20 40

REV	DATE	DESCRIPTION	BY	ENG	CHK	APP	REV	DATE	DESCRIPTION	BY	ENG	CHK	APP
△							△						
△							△						
△							△						
△							△						
△							△						
△							△						

FOR REVIEW ONLY - NOT FOR CONSTRUCTION

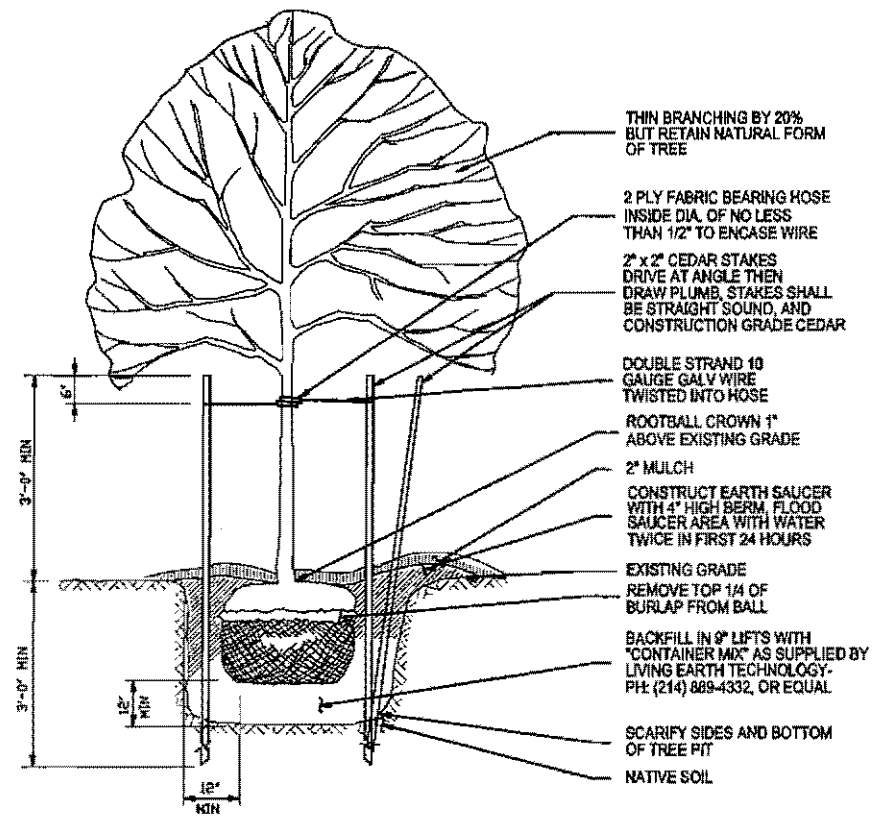
LINDA TYCHER & ASSOCIATES LANDSCAPE ARCHITECTS

Turner Collier & Braden Inc.

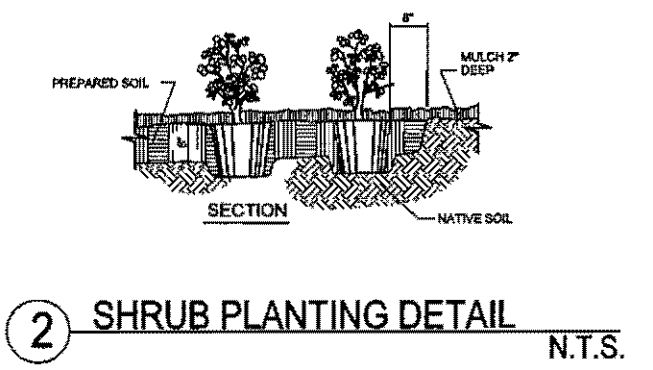
DART PROJECT

SCALE	1"=20'-0"
DRAWN	C. WALKER
DESIGNED	L. TYCHER
CHECKED	L. TYCHER
IN CHARGE	L. TYCHER
DATE	25 JULY 01

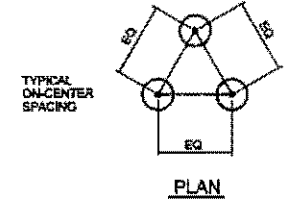
CONTRACT SHEET No.		
ADDISON TRANSIT CENTER LANDSCAPE DEVELOPMENT		
CONTRACT	DWG No.	REV
	LS-1	0



**1 TREE PLANTING DETAIL** N.T.S.  
 NOTE: THIS DETAIL FOR ALL ORNAMENTALS AND TREES 4" CALIPER AND LESS. PLANTING PROCEDURE UTILIZED FOR ALL TREES.



**2 SHRUB PLANTING DETAIL** N.T.S.



**3 GROUNDCOVER PLANTING DETAIL** N.T.S.

**PLANT SCHEDULE**

CODE	BOTANICAL NAME	COMMON NAME	SIZE	REMARKS
TREES:				
RO	QUERCUS SHUMARDII	'SHUMARD' RED OAK	100 GAL.	4" CAL., SINGLE STRAIGHT TRUNK; 12' - 14' HT., 7" SP., BRANCHING AT 6'
CM	LAGERSTROEMIA INDICA 'WATERMELON RED'	CRAPEMYRTLE 'WATERMELON RED'	65 GAL.	8' HT., MIN. 3 TRUNK; BRANCHING AT 3'
SHRUBS:				
BH	ILEX CORNUTA 'BURFORDII'	BURFORD HOLLY	5 GAL.	FULL PLANT; MIN. 18" HT. AT PLANTING SPACED 3'-0" O.C.
GROUNDCOVER:				
GL	LIRIOPE MUSCARI	GREEN LIRIOPE	1 GAL.	4" POTS, FULL PLANT; SPACED 12" O.C.

**GENERAL NOTES**

LANDSCAPE CONTRACTOR IS RESPONSIBLE FOR LOCATING ALL UTILITIES BEFORE BEGINNING WORK  
 LANDSCAPE CONTRACTOR TO NOTIFY OWNER IF ANY SITE DISCREPANCIES OCCUR  
 LANDSCAPE CONTRACTOR RESPONSIBLE FOR OBTAINING ALL RELEVANT PERMITS  
 ALL PLANTING AREAS THAT ARE NOT INDICATED AS SHRUBS OR GROUNDCOVER ARE TO BE HYDROMULCH BERMUDA  
 ALL LANDSCAPE AREAS TO BE WATERED BY A FULLY AUTOMATIC IRRIGATION SYSTEM WITH RAIN AND FREEZE SENSORS, DESIGNED BY A LICENSED IRRIGATOR  
 GENERAL CONTRACTOR IS TO FINAL GRADE SITE IN ACCORDANCE WITH CIVIL ENGINEERING DOCUMENTS AND LEAVE SITE CLEAN AND FREE OF DEBRIS

REV	DATE	DESCRIPTION	BY	ENG	CHK	APP	REV	DATE	DESCRIPTION	BY	ENG	CHK	APP

FOR REVIEW ONLY - NOT FOR CONSTRUCTION

**LINDA TYCHER & ASSOCIATES**  
LANDSCAPE ARCHITECTS

**Turner Collier & Braden Inc.**

**DART PROJECT**

SCALE: AS NOTED  
 DRAWN: G. WALKER  
 DESIGNED: L. TYCHER  
 CHECKED: L. TYCHER  
 IN CHARGE: L. TYCHER  
 DATE: 25 JULY 01

CONTRACT SHEET No.

**ADDISON TRANSIT CENTER LANDSCAPE DETAILS/NOTES**

CONTRACT    DWG No. **LS-2**    REV 0

# ADDISON TRANSIT CENTER PARKING LOT EXPANSION

C-96000124-28

Rec'd 5-16-01



TOWN OF ADDISON  
RECOMMENDED:

DIRECTOR OF PUBLIC WORKS      DATE

TURNER COLLIE & BRADEN INC.

PRELIMINARY
SUBMITTED FOR REVIEW
BY Charles E. Bennett, P.E.    P.E. 69613
TurnerCollie & Braden Inc.
Date                                  April 2001
NOT FOR CONSTRUCTION, BIDDING OR PERMITTING PURPOSES

DALLAS AREA RAPID TRANSIT  
RECOMMENDED:

KEITH SMITH, P.E.                                  DATE  
PROJECT MANAGER  
MOBILITY PROGRAMS DEVELOPMENT

APPROVED:

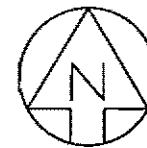
KODROSH OLYAI, P.E.                                  DATE  
ASSISTANT VICE PRESIDENT  
MOBILITY PROGRAMS DEVELOPMENT

A

B

C

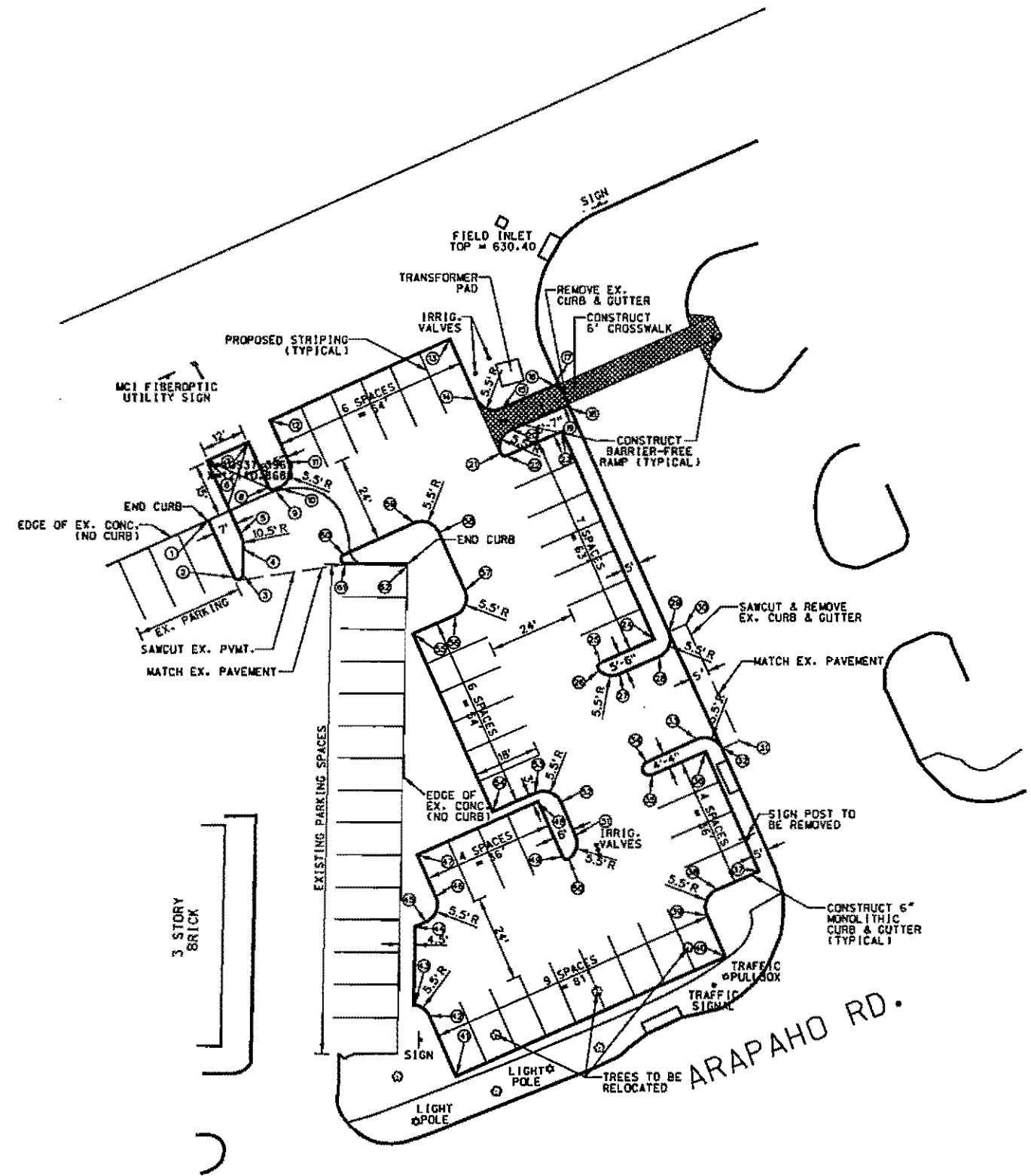
D



SCALE IN FEET  
0 20 40

#	NORTHING	EASTING
1	10920.8449	12110.6895
2	10905.0626	12117.8474
3	10905.6479	12120.7131
4	10912.8135	12120.8772
5	10917.3908	12119.9424
6	10937.3959	12110.8688
7	10942.3534	12121.7973
8	10930.0588	12127.3754
9	10929.3123	12129.3591
10	10929.8905	12130.6340
11	10937.1296	12133.3898
12	10848.5979	12129.3025
13	10970.9031	12117.4826
14	10954.4702	12184.7721
15	10951.6671	12192.0168
16	10958.1260	12206.4799
17	10950.1066	12207.4659
18	10951.8788	12211.0319
19	10952.6436	12209.1179
20	10846.1940	12194.4759
21	10839.5041	12191.4476
22	10838.5847	12193.4870
23	10845.2552	12208.5459
24	10887.6770	12234.0928
25	10881.1049	12219.2770
26	10878.6556	12218.8422
27	10877.5808	12224.8968
28	10882.4467	12235.8659
29	10889.7044	12238.6633
30	10891.7587	12243.2218
31	10859.0988	12257.9130
32	10857.0519	12253.3571
33	10859.1308	12246.0548
34	10853.3260	12232.2778
35	10849.3543	12234.0079
36	10855.8037	12248.5027
37	10822.8787	12263.0611
38	10817.8237	12251.6291
39	10810.5932	12248.8231
40	10799.1371	12255.8781
41	10766.3804	12179.7971
42	10782.8428	12179.5178
43	10786.0777	12168.1369
44	10807.3467	12189.6880
45	10809.5927	12171.4059
46	10815.8471	12174.2118
47	10827.2793	12169.1568
48	10841.8379	12209.0813
49	10826.7473	12208.7544
50	10826.0257	12210.8116
51	10834.7996	12212.7519
52	10842.0197	12208.6749
53	10844.8257	12201.4205
54	10839.6661	12189.7518
55	10889.0275	12167.8553
56	10894.0799	12179.2816
57	10901.3403	12182.0850
58	10917.5269	12174.9047
59	10920.3056	12167.6054
60	10911.4867	12148.1609
61	10908.6210	12148.7461
62	10908.2243	12168.0712

NOTE:  
ALL REFERENCE POINTS ARE  
TAKEN AT FACE OF CURB.



PRELIMINARY  
SUBMITTED FOR REVIEW  
BY Charles E. Bennett, P.E. P.E. 68613  
TurnerCollie & Braden Inc.  
Date April 2001  
NOT FOR CONSTRUCTION, BIDDING  
OR PERMITTING PURPOSES

CONTRACT SHEET No. 1 OF 1	
ADDISON TRANSIT CENTER SITE PLAN	
CONTRACT C-9600024-28	DWG No. REV 0

REV	DATE	DESCRIPTION	BY	ENG	CHK	APP	REV	DATE	DESCRIPTION	BY	ENG	CHK	APP

TURNER COLLIE & BRADEN INC.  
LINDA TYCHER & ASSOCIATES  
ARS ENGINEERS INC.

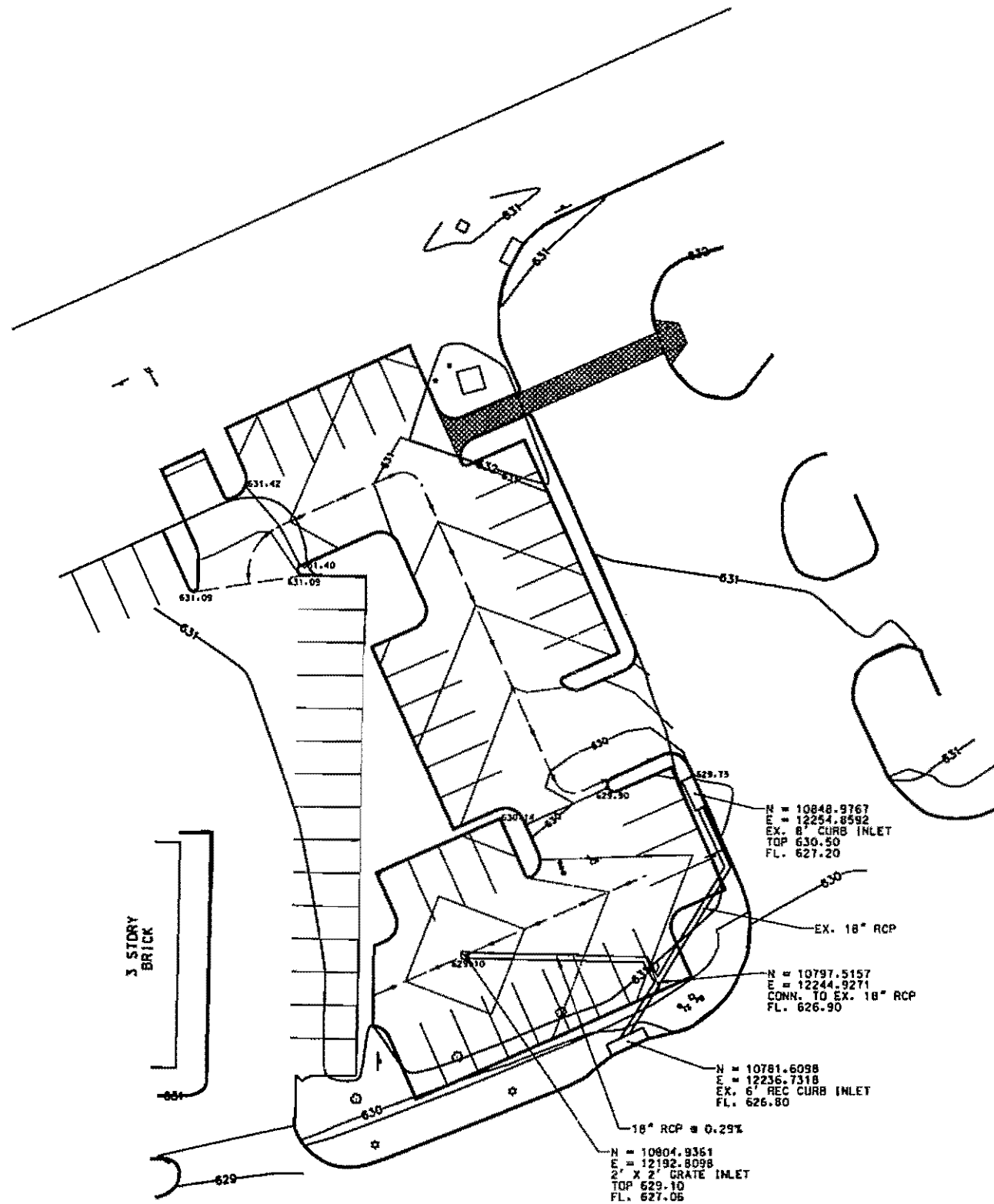
DART PROJECT

SCALE	1"=40'
DRAWN	J. PAROLFF
DESIGNED	J. PAROLFF
CHECKED	C. BENNETT
IN CHARGE	G. BERRY
DATE	22 MARCH 01





SCALE IN FEET  
0 20 40



**PRELIMINARY**  
 SUBMITTED FOR REVIEW  
 BY Charles E. Bennett, P.E. P.E. 08813  
 Turner Collie & Braden Inc.  
 Date April 2001  
 NOT FOR CONSTRUCTION, BIDDING  
 OR PERMITTING PURPOSES

CONTRACT SHEET No. 1 OF 1

REV	DATE	DESCRIPTION	BY	ENG	CHK	APP	REV	DATE	DESCRIPTION	BY	ENG	CHK	APP

TURNER COLLIE & BRADEN INC.  
 LINDA TYCHER & ASSOCIATES  
 ARS ENGINEERS INC.

**DART PROJECT**

SCALE	1"=40'
DRAWN	J. RAYLUFF
DESIGNED	J. RAYLUFF
CHECKED	C. BENNETT
IN CHARGE	G. BAPPY
DATE	22 MARCH 01

**ADDISON  
 TRANSIT CENTER  
 DRAINAGE &  
 GRADING PLAN**

CONTRACT C-9600024-28 DWG No. REV 0



#	NORTHING	EASTING
1	10920.8449	12110.6895
2	10905.0628	12117.8474
3	10905.6479	12120.7131
4	10912.8139	12120.8772
5	10917.3908	12119.9424
6	10937.3969	12110.8688
7	10942.3534	12121.7973
8	10930.0588	12127.3734
9	10929.3123	12129.3591
10	10929.8905	12130.6340
11	10937.1296	12133.3999
12	10948.5979	12128.3025
13	10970.9031	12177.4826
14	10954.4702	12184.7721
15	10951.6671	12192.0168
16	10958.1260	12206.6798
17	10960.1066	12207.4465
18	10951.8788	12211.0939
19	10952.6436	12209.1179
20	10946.1940	12194.4759
21	10939.5041	12191.4484
22	10938.5847	12193.4870
23	10945.2652	12208.5469
24	10887.5770	12234.0928
25	10881.1048	12219.2710
26	10878.6556	12218.8422
27	10877.5808	12224.8958
28	10882.4457	12235.8659
29	10869.7044	12238.6633
30	10891.7587	12243.2218
31	10859.0888	12257.2190
32	10857.0519	12253.3571
33	10852.7108	12246.0548
34	10853.3260	12232.2218
35	10849.3243	12234.0075
36	10855.8017	12248.5027
37	10852.8767	12253.0611
38	10811.8237	12251.6291
39	10810.5632	12248.8231
40	10799.1371	12253.8781
41	10766.3804	12179.7971
42	10782.8428	12172.5178
43	10786.0777	12168.1569
44	10807.3457	12168.5880
45	10808.5927	12171.4059
46	10815.8471	12174.2118
47	10827.2193	12169.1568
48	10841.8379	12202.0817
49	10826.7473	12208.7544
50	10826.0257	12210.8116
51	10837.7996	12212.7518
52	10842.0197	12208.6749
53	10844.8257	12201.4205
54	10839.6561	12189.7518
55	10885.0275	12167.8553
56	10894.0799	12179.2816
57	10901.3403	12182.0950
58	10917.9269	12174.9047
59	10920.3056	12167.8094
60	10911.4867	12148.1609
61	10908.6210	12148.7461
62	10908.2243	12158.0712

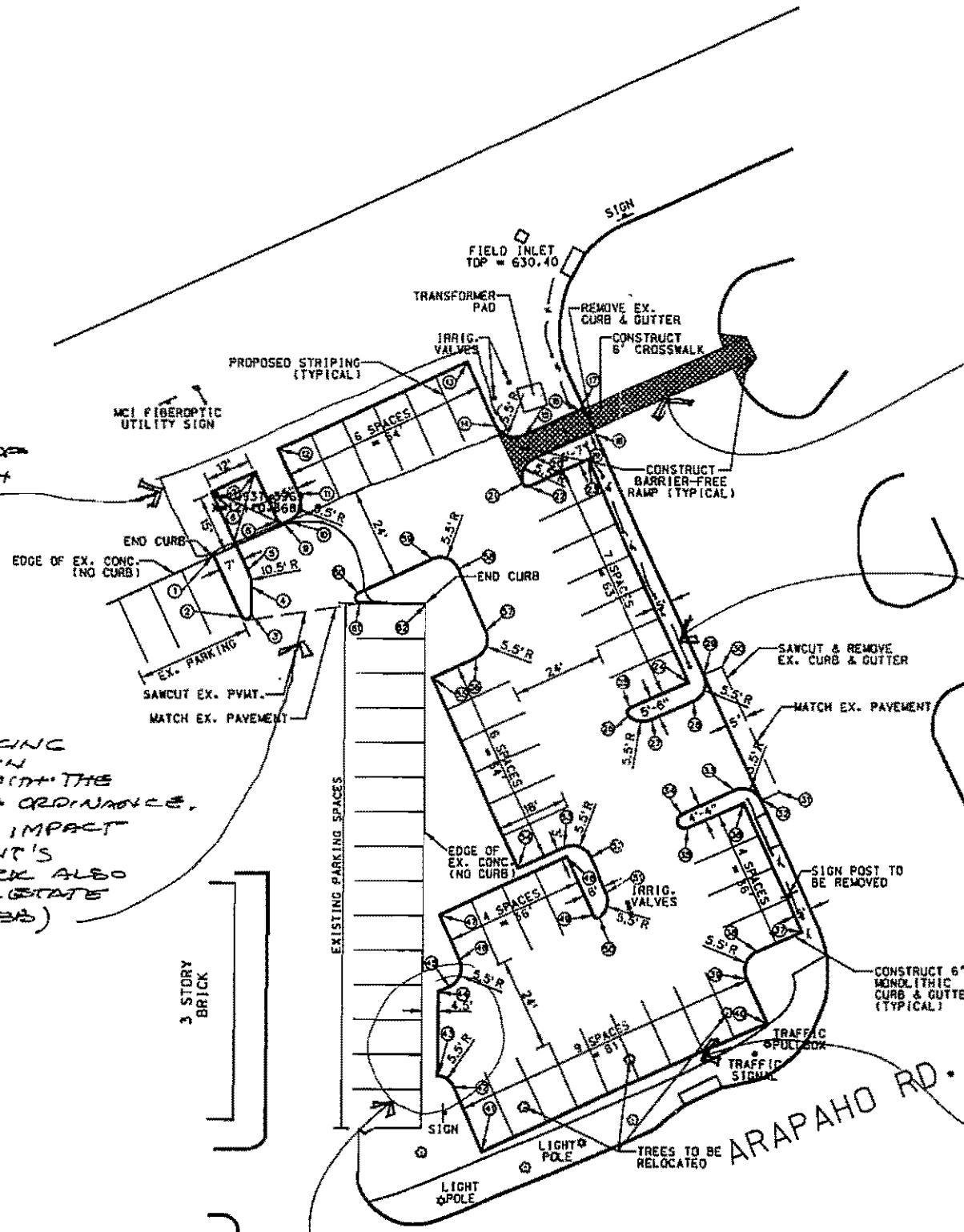
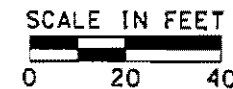
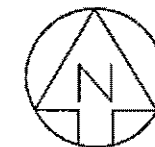
NOTE:  
ALL REFERENCE POINTS ARE  
TAKEN AT FACE OF CURB.

VERIFY THE USE OF  
THIS R.O.W., WITH  
JAN SEIDNER

VERIFY THAT PARKING  
CONNECTION IS IN  
ACCORDANCE WITH THE  
T.O.A. PARKING ORDINANCE.  
SPILLOVER MAY IMPACT  
BUILDING TENANT'S  
PARKING. CHECK ALSO  
WITH OAK RIDGE STATE  
DEPT. (RON WEBB)

VERIFY WITH TOWN OF ADDISON (T.O.A.)  
THAT DEAD END PARKING IS PERMITTED

(Darts Internal  
Review Comments)



VERIFY THE SAFETY OF  
THIS CROSSING WITH BUS  
OPERATIONS. IF APPROVED, THIS  
CROSSING SHOULD MATCH THE ONE  
AT THE OPPOSITE END OF BUS PLAT FORM.

PROVIDE  
RAILING TO MATCH  
OPPOSITE SIDE OF  
FACILITY

DRAWING PACKAGE SHALL  
INCLUDE:

- REMOVAL/RELOCATION OF EXISTING IRRIGATION HEADS AND ANY OTHER EXISTING ELEMENTS,
- DRAINAGE
- ILLUMINATION/LIGHTING
- FENCE OR RAILING REQUESTED BY THE TOWN OF ADDISON
- SIGNAGE
- ADA REQUIREMENTS FOR ADDITIONAL SPACES, AS NEEDED. SPACES SHALL BE DESIGNATED AND CLEARLY IDENTIFIED
- LANDSCAPING

VERIFY LANDSCAPING  
REQUIREMENT WITH T.O.A.  
ADJACENT TO STREET  
AND THROUGHOUT PARKING  
AREA

PRELIMINARY	
SUBMITTED FOR REVIEW	
BY	Charles E. Bennett, P.E. P.E. 68613
TurnerCollie&Braden Inc.	
Date	April 2001
NOT FOR CONSTRUCTION, BIDDING OR PERMITTING PURPOSES	

CONTRACT SHEET No. 1 OF 1

ADDISON  
TRANSIT CENTER  
SITE PLAN

DART PROJECT



SCALE	1"=20'
DRAWN	J. BRADLEY
CHECKED	J. BRADLEY
DESIGNED	C. BENNETT
IN CHARGE	G. SHRY
DATE	22 MARCH 01

TURNER COLLIE & BRADEN INC.

LINDA TYCHER & ASSOCIATES

ARS ENGINEERS INC.

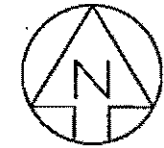
CONTRACT

DWG No.

REV

REFERENCE POINTS		
#	NORTHING	EASTING
1	10829.8449	12110.6895
2	10805.0626	12117.8474
3	10805.6479	12120.7131
4	10812.8135	12120.8772
5	10817.3908	12119.9424
6	10837.3969	12110.8688
7	10842.3534	12121.7973
8	10830.0588	12127.3734
9	10829.3123	12129.3591
10	10829.8905	12130.6340
11	10837.1296	12133.3898
12	10848.5979	12128.3025
13	10870.9031	12177.4826
14	10854.4702	12184.7721
15	10851.6671	12192.0168
16	10858.1260	12206.6798
17	10860.1066	12207.4465
18	10851.8788	12211.0939
19	10852.6436	12209.1178
20	10846.1940	12194.4759
21	10859.5041	12191.4484
22	10838.5847	12193.4870
23	10845.2652	12208.5469
24	10887.6770	12234.0928
25	10881.1048	12219.2770
26	10878.6556	12218.8422
27	10877.5808	12224.8968
28	10882.4467	12235.8659
29	10889.7044	12238.6633
30	10891.7587	12243.2218
31	10859.0988	12257.9190
32	10857.0519	12253.3571
33	10859.7308	12246.0548
34	10853.3260	12232.2278
35	10849.3943	12234.0075
36	10855.8037	12248.5027
37	10822.8787	12263.0611
38	10817.8237	12251.6291
39	10810.5693	12248.8231
40	10799.1371	12253.8781
41	10766.3804	12179.7971
42	10782.8428	12172.5178
43	10786.0777	12168.1569
44	10807.3467	12168.5880
45	10808.5927	12171.4059
46	10815.8471	12174.2118
47	10827.2793	12169.1568
48	10841.8379	12202.0817
49	10826.7473	12208.7544
50	10826.0257	12210.8116
51	10832.7996	12212.7518
52	10842.0197	12208.6749
53	10844.8257	12201.4205
54	10839.6661	12189.7518
55	10889.0275	12167.8553
56	10894.0799	12179.2816
57	10901.3403	12182.0850
58	10917.5269	12174.9047
59	10920.3056	12167.6054
60	10911.4867	12148.1609
61	10908.6210	12148.7461
62	10908.2243	12166.0712

NOTE:  
ALL REFERENCE POINTS ARE  
TAKEN AT FACE OF CURB.



*Does this impact  
"2nd Row" of trees  
along here?*

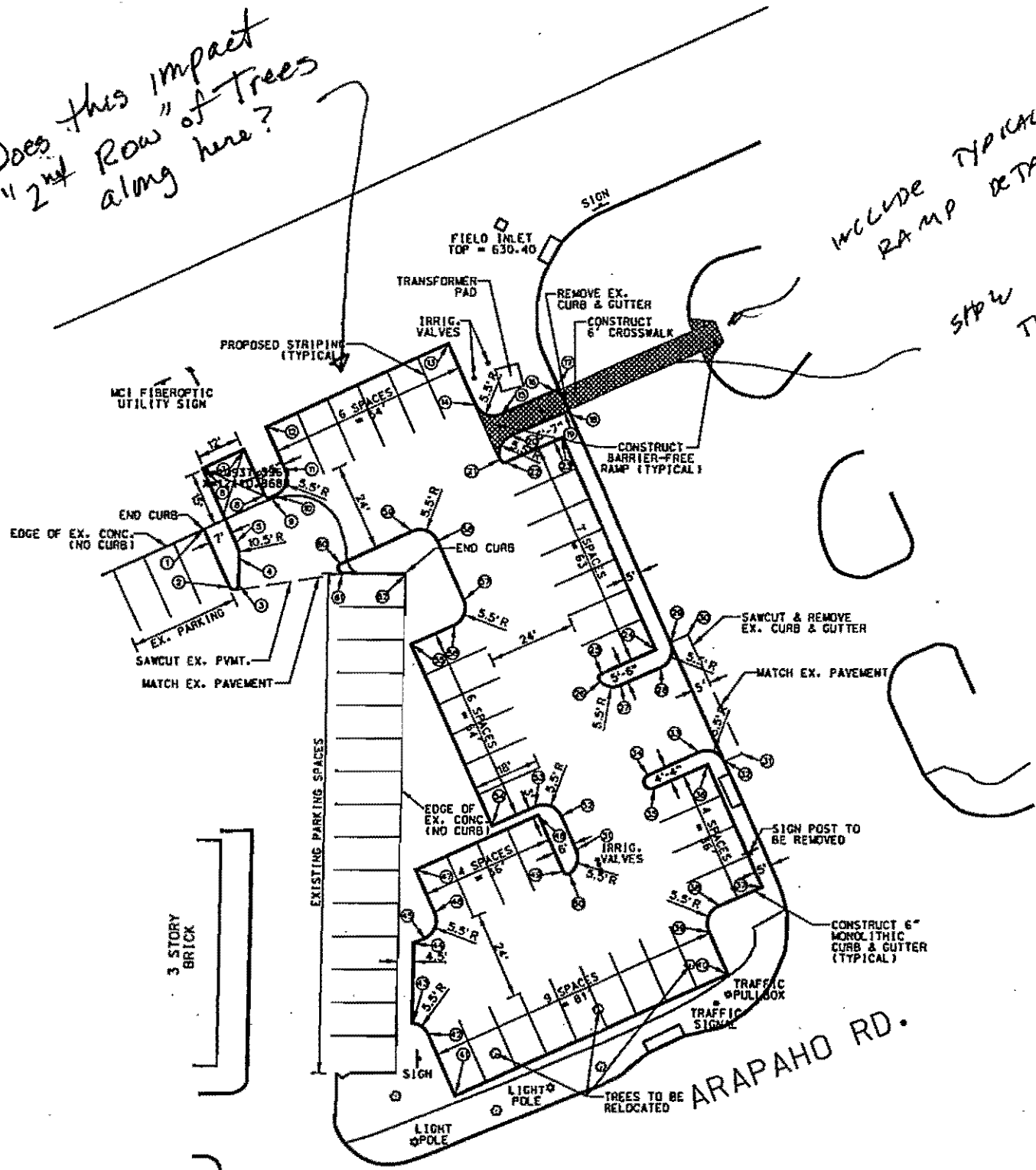
*INCLUDE TYPICAL ADA  
RAMP DETAIL*

*SHOW DETAIL OF WIDTH,  
TYPE, COLOR, ETC. OF  
CROSS-WALK.*

*SHOW EXIST UTILITIES &  
ASSOCIATED SERVICE  
LINES ON SITE PLAN (i.e., water,  
sewer, etc.)*

*SHOW TYPICAL DRIVE  
APPROACH DETAIL!*

*SHOW TYPICAL concrete  
CURB + GUTTER SECTION*

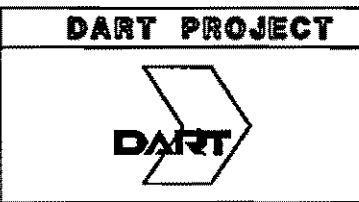


PRELIMINARY  
SUBMITTED FOR REVIEW  
BY Charles E. Bennett, P.E., P.E. 69813  
TurnerCollie & Braden Inc.  
Date: April 2007  
NOT FOR CONSTRUCTION, BIDDING  
OR PERMITTING PURPOSES

CONTRACT SHEET No. 1 OF 1

REV	DATE	DESCRIPTION	BY	ENG	CHK	APP	REV	DATE	DESCRIPTION	BY	ENG	CHK	APP

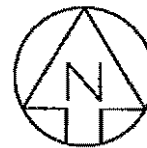
TURNER COLLIE & BRADEN INC.  
LINDA TYCHER & ASSOCIATES  
ARS ENGINEERS INC.



SCALE	1"=20'
DRAWN	J. RAYCLIFF
DESIGNED	J. RAYCLIFF
CHECKED	C. BENNETT
IN CHARGE	G. BERRY
DATE	22 MARCH 07

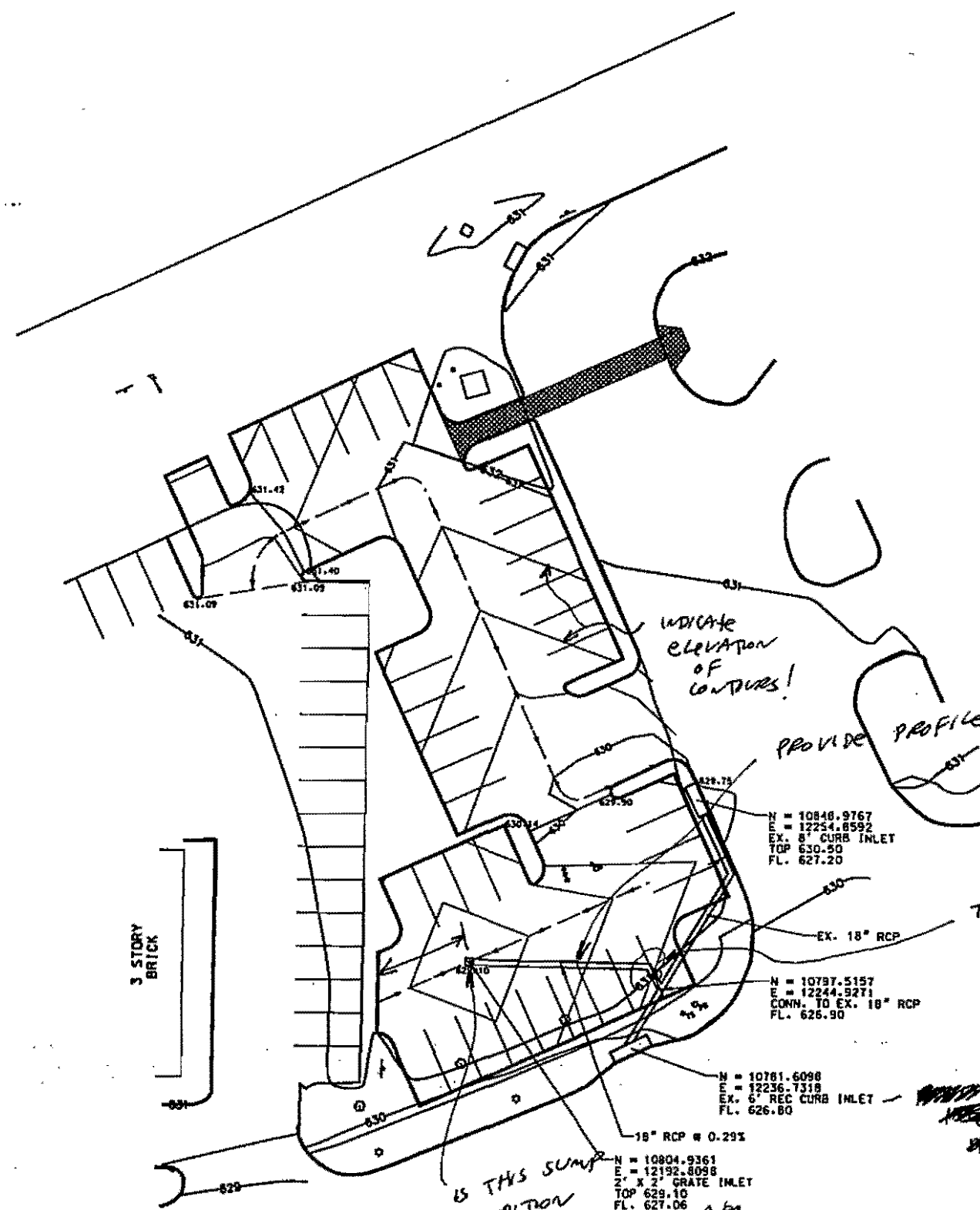
ADDISON  
TRANSIT CENTER  
SITE PLAN

CONTRACT C-2600024-28 DWG No. REV 0



SCALE IN FEET  
0 20 40

- SHOW: 1. DRAINAGE SUB-AREAS  
2. FLOW CALCULATIONS  
3. CAPACITY OF SWALE IN PARKING LOT TO HANDLE Q.  
4. ON-SITE RETENTION LOCATION & CALCULATIONS



PROVIDE PROFILE OF PROP. 18" R.C.P. WITH DETAIL OF CONNECTION TO EXIST. 18" R.C.P.!

& SHOW EMBEDMENT + BACKFILL DETAIL OF PROP. 18" R.C.P.

TAKE OUT BEND IN PIPE!

NOTE: ALL CONSTRUCTION SHALL BE IN ACCORDANCE WITH COG + TOWN OF ADDISON SPECIFICATIONS

PRELIMINARY  
SUBMITTED FOR REVIEW  
BY Charles E. Bennett, P.E. P.E. 69613  
Turner Collie & Braden Inc.  
Date April 2001  
NOT FOR CONSTRUCTION, BIDDING OR PERMITTING PURPOSES

IS THIS SUMP CONDITION ALSO A STORMWATER DETENTION AREA?

CONTRACT SHEET No. 1 OF 1

REV	DATE	DESCRIPTION	BY	ENG	CHK	APP	REV	DATE	DESCRIPTION	BY	ENG	CHK	APP
△							△						
△							△						
△							△						
△							△						
△							△						
△							△						

TURNER COLLIE & BRADEN INC.  
LINDA TYCHER & ASSOCIATES  
ARS ENGINEERS INC.

**DART PROJECT**

SCALE: 1"=40'  
DRAWN: J. PARCLOFF  
DESIGNED: J. PARCLOFF  
CHECKED: C. BRADETT  
IN CHARGE: G. BERRY  
DATE: 22 MARCH 01

**ADDISON  
TRANST CENTER  
DRAINAGE &  
GRADING PLAN**

CONTRACT C-9600024-28 DWG No. REV 0

# HP LaserJet 3200se



TOALASERJET 3200  
9724502837  
DEC-11-2001 9:00AM

## Fax Call Report

Job	Date	Time	Type	Identification	Duration	Pages	Result
402	12/11/2001	8:56:48AM	Send	92147493670	3:34	7	OK

*To Mahesh Kumil  
214-749-3670*

*7 pages*



Post Office Box 9010 Addison, Texas 75001-9010 5300 Belt Line Road (972) 450-7000 FAX (972) 450-7043

**AGENDA  
PLANNING AND ZONING COMMISSION  
December 13, 2001  
Commissioners' Pre-Session - 7:00 p.m.  
Public Hearing - 7:30 p.m.  
ADDISON TOWN HALL - COUNCIL CHAMBERS  
5300 BELT LINE ROAD**

**Pledge of Allegiance**

Approval of the minutes of the November 15, 2001 meeting.

1. Lot 1, Block 1, Addison Athletic Club Addition. Requesting approval of a final plat for the Addison Fire Station 2, the Addison Athletic Club, and lots 127 through 135, Block A of the Waterford Addition, located on 8.10 acres of land, located at 3900 and 3950 Beltway Drive, on application from the Town of Addison, represented by R-Delta Engineers.
2. Case 1398-SUP/Sam's Boat. Requesting approval of an amendment to an existing Special Use Permit for a restaurant and an existing Special Use Permit for the sale of alcoholic beverages for on-premises consumption, located at 4180 Belt Line Road, on application from Safari, U.S.A., represented by Mr. Ken Wales.
3. Case 1399-Z/DART/Addison Transit Center. Requesting approval of an amendment to an existing Special Use Permit for a public utility (a bus transit center), located at the northwest corner of the intersection of Quorum Drive and Arapaho Road, on application from Dallas Area Rapid Transit, represented by Mr Mahesh Kumil, P.E.

**THE TOWN OF ADDISON IS ACCESSIBLE TO PERSONS WITH DISABILITIES. PLEASE CALL 450-2819 AT LEAST 48 HOURS IN ADVANCE IF YOU NEED ASSISTANCE.**

To Mahesh Kuimil:

214-749-3670

7 pages



Post Office Box 9010 Addison, Texas 75001-9010 5300 Belt Line Road (972) 450-7000 FAX (972) 450-7043

**AGENDA  
PLANNING AND ZONING COMMISSION  
December 13, 2001  
Commissioners' Pre-Session – 7:00 p.m.  
Public Hearing – 7:30 p.m.  
ADDISON TOWN HALL – COUNCIL CHAMBERS  
5300 BELT LINE ROAD**

Pledge of Allegiance

Approval of the minutes of the November 15, 2001 meeting.

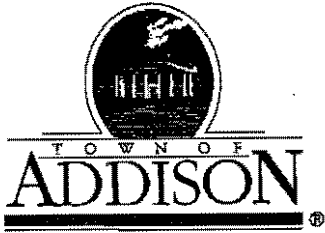
1. Lot 1, Block 1, Addison Athletic Club Addition. Requesting approval of a final plat for the Addison Fire Station 2, the Addison Athletic Club, and lots 127 through 135, Block A of the Waterford Addition, located on 6.10 acres of land, located at 3900 and 3950 Beltway Drive, on application from the Town of Addison, represented by R-Delta Engineers.
2. Case 1398-SUP/Sam's Boat. Requesting approval of an amendment to an existing Special Use Permit for a restaurant and an existing Special Use Permit for the sale of alcoholic beverages for on-premises consumption, located at 4180 Belt Line Road, on application from Safari, U.S.A., represented by Mr. Ken Wales.
3. Case 1399-Z/DART/Addison Transit Center. Requesting approval of an amendment to an existing Special Use Permit for a public utility (a bus transit center), located at the northwest corner of the intersection of Quorum Drive and Arapaho Road, on application from Dallas Area Rapid Transit, represented by Mr Mahesh Kuimil, P.E.

**THE TOWN OF ADDISON IS ACCESSIBLE TO PERSONS WITH DISABILITIES. PLEASE CALL 450-2819 AT LEAST 48 HOURS IN ADVANCE IF YOU NEED ASSISTANCE.**

# 1399-SUP

Case 1399-Z/DART/Addison Transit Center. Requesting approval of an amendment to an existing Special Use Permit for a public utility (a bus transit center), located at the northwest corner of the intersection of Quorum Drive and Arapaho Road, on application from Dallas Area Rapid Transit, represented by Mr Mahesh Kuimil, P.E.





Post Office Box 9010

Addison, Texas 75001-9010

5300 Belt Line Road

(972) 450-7000

FAX (972) 450-7043

December 7, 2001

STAFF REPORT

RE: Case 1399-SUP/DART (Dallas Area Rapid Transit)

LOCATION: Northwest corner of the intersection of Quorum Drive and Arapaho Road

REQUEST: Approval of an amendment to an existing Special Use Permit for a public utility (a bus transit center)

APPLICANT: Dallas Area Rapid Transit, represented by Mr. Mahesh Kiumil, P.E.

DISCUSSION:

Background. The Dallas Area Rapid Transit Authority received a Special Use Permit for the Addison Transit Center on October 23, 1997 through Ordinance 097-055. The Transit Center has been operating at this location since 1998. The transit center has been very successful, and at this point, DART needs to expand the parking for it. There is space on the west end of the site that can be utilized for parking without interfering with the parking for the convenience store and office building. DART would like to expand into this area and add 36 additional parking spaces.

Proposed Plan. The plans submitted by the applicant show the additional parking spaces. There will not be any additional structures in new area. The plans have been reviewed by the staff, and conform to the city's requirements for size, drive-width, and paving.

Public Works. The Public Works Department has reviewed the site plan, and notes that the final grading, landscaping, and drainage plans must be approved by the staff prior to construction of the parking lot.

Landscaping. The applicant has submitted a landscaping plan that complies with the requirements of the ordinance.

RECOMMENDATION:

Staff recommends approval of this request for an amendment to an existing Special Use Permit to add 36 additional parking spaces to the Addison Transit Center, subject to no conditions.

Respectfully submitted,

A handwritten signature in black ink that reads "CMORAN". The letters are stylized and connected.

Carmen Moran  
Director of Development Services



**Carmen Moran**

---

**From:** Steve Chutchian  
**Sent:** Wednesday, December 05, 2001 3:18 PM  
**To:** Carmen Moran  
**Cc:** Michael Murphy  
**Subject:** December PPRC Comments

Please note the following comments regarding items on the December 13, 2001 P & Z Commission agenda:

**Lot 1 and Lot 2, Block 1, Addison Athletic Club Addition**

Title of plat should be changed to Lot 1 & Lot 2, Block i, Addison Athletic Club Addition.

The word "PORTIAL" in title should be changed to "PARTIAL".

Address of "Owner" is incorrect.

Date of plat should be changed to December 2001.

The plat indicates a bearing of S 00 degrees 55' 55" W, and distance of 11.62 ft. The Owners Certificate incorrectly shows the distance as 1.62 ft.

Lot 2 is incorrectly indicated as 5,426 acres.

In the twelfth paragraph of the Owners Certificate, the word "pass" should read "passed".

The variation of up to 53 square feet, indicated in the fourteenth paragraph of the Owners Certificate is high.

In the paragraph that begins with "Any drainage and floodway ...." incorrectly includes the letters "ht" in the sentence.

Civil drawings must be approved by the Town of Addison.

**Case 1398-SUP/Sam's Boat**

No Comments

**Case 1399-Z/DART/Addison Transit Center**

Landscaping, grading and drainage plans must be approved by staff prior to construction of parking lot.

# Memorandum

DATE: December 5, 2001

TO: Carmen Moran, Director of Development Services

FROM: Slade Strickland, Director of Parks & Recreation

**SUBJECT: Addison Transit Center – Parking Lot Expansion**

---

The landscape plan submitted by the applicant meets all the requirements of the Landscape Regulations. A final irrigation plan will need to be submitted when they apply for a building permit.

**armen Moran**

---

**From:** Gordon Robbins  
**Sent:** Tuesday, December 04, 2001 9:40 AM  
**To:** Carmen Moran  
**Subject:** Case 1399-Z / DART / Addison Transit Center

The Fire Department has no comment on this proposal. Thank you for asking.



**Dallas Area Rapid Transit**  
P.O. Box 660163  
Dallas, Texas 75266-0163  
214/749-3278

November 16, 2001

Mr. Jim Pierce, P.E.  
Assistant Public Works Director  
PO Box 9010  
Addison, TX 75001-9010


Sub: Addison Park and Ride Improvement Project

Dear Mr. Pierce,

As you requested, attached are 6 additional copies of preliminary engineering plans for the proposed parking lot expansion and bus lane improvements at the Addison Park and Ride facility for your review.

I can be reached at (214) 749-2822 if you have any questions regarding this project.

Sincerely,

  
Mahesh Kurnil, P.E.  
Project Manager  
Mobility Programs Development

Enclosures

C: Koorosh Olyai  
Robert Parks  
File



Dallas Area Rapid Transit  
PO. Box 660163  
Dallas, Texas 75266-0163  
214/749-3278

Carmen: Please place  
this project in the  
PRC review process

Thanks,

Jan  
11-19-01

November 7, 2001

Mr. Jim Pierce, P.E.  
Assistant Public Works Director  
PO Box 9010  
Addison, TX 75001-9010

Sub: Addison Park and Ride Improvement Project


Dear Mr. Pierce,

Attached are preliminary engineering plans for the proposed parking lot expansion and bus lane improvements at the Addison Park and Ride facility for your review. Preparation of final plans will commence after approval of the preliminary engineering plans.

The plans show that the 20' Street Landscape Buffer and the Parking Lot Screening requirements have not been met. It is my understanding that DART has requested a waiver from the Town of Addison for these requirements.

I can be reached at (214) 749-2822 if you have any questions regarding this project.

Sincerely,

  
Mahesh Kuimil, P.E.  
Project Manager  
Mobility Programs Development

Enclosures

C: Koorosh Olyai  
Robert Parks  
File

**Jim Pierce**

---

**From:** Mahesh Kuimil [MKuimil@dart.org]  
**Sent:** Tuesday, November 06, 2001 9:37 AM  
**To:** jpierce@ci.addison.tx.us  
**Cc:** Koorosh Olyai; Robert Parks; Tom Ryden  
**Subject:** Addison Park and Ride Expansion

Jim,

Sorry for the delay in getting back to you. I received the preliminary engineering plans for this project yesterday and they will be forwarded to your office shortly for review and comments.

Final design work will commence as soon as the preliminary plans are approved. Please contact me if additional information is needed.

Thanks

Mahesh Kuimil, P.E.  
Project Manager  
Mobility Programs Development  
Dallas Area Rapid Transit  
Ph. No. (214) 749-2822  
Fax No. (214) 749-3670  
Mkuimil@DART.org

## Jim Pierce

---

**From:** Tom Ryden [Ryden@dart.org]  
**Sent:** Monday, November 05, 2001 12:00 PM  
**To:** jpierce@ci.addison.tx.us  
**Cc:** Mahesh Kuimil; Robert Parks  
**Subject:** Re: FW: Addison Transit Center Parking Lot Expansion

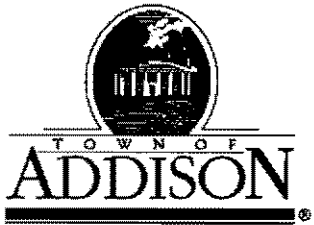
Jim....Keith has "retired" from DART. He is now enjoying the good life in Ft Worth. We have assigned this project to Mahesh Kuimil. I have asked him to give you a status. He is out of the office today. I hope everything else is going well.

>>> <jpierce@ci.addison.tx.us> 11/02/01 02:30PM >>>

Tom: I sent this message to Keith but it didn't go through. Is someone else in charge of this project? Please advise. Thanks, Jim.

> -----Original Message-----

> From: Jim Pierce  
> Sent: Wednesday, October 31, 2001 4:24 PM  
> To: Keith Smith (E-mail)  
> Cc: Slade Strickland  
> Subject: Addison Transit Center Parking Lot Expansion  
>  
> Keith: Can you give me an update on the status of this project? Last  
> I  
> heard there was a perceived problem with meeting our landscaping  
> requirements. I have talked to Slade Strickland about this and he  
> believes the project can meet our requirements if you include all of  
> the  
> streetscape along Arapaho. Please let me hear from you. Thanks,  
>  
> Jim Pierce, P.E.  
> Assistant Public Works Director  
> PO Box 9010  
> Addison, TX 75001-9010  
> 972-450-2879  
>



**Public Works / Engineering**  
 16801 Westgrove • P.O. Box 9010  
 Addison, Texas 75001-9010  
 Telephone: (972) 450-2871 • Fax: (972) 450-2837

# LETTER OF TRANSMITTAL

DATE	5-30-01	JOB NO.	
ATTENTION			
RE:	Addison Transit Center Parking Lot Expansion		

TO Keith Smith, P.E.  
DART

**GENTLEMAN:**

- WE ARE SENDING YOU**
- Attached
  - Under separate cover via \_\_\_\_\_ the following items:
  - Shop Drawings
  - Prints
  - Plans
  - Samples
  - Specifications
  - Copy of letter
  - Change order
  - \_\_\_\_\_

COPIES	DATE	NO.	DESCRIPTION
1			Preliminary Plans with Comments
1			Memo from Slade Strickland

**THESE ARE TRANSMITTED as checked below:**

- For approval
- For your use
- As requested
- For review and comment
- FOR BIDS DUE \_\_\_\_\_ 19\_\_\_\_
- Approved as submitted
- Approved as noted
- Returned for corrections
- \_\_\_\_\_
- Resubmit \_\_\_\_\_ copies for approval
- Submit \_\_\_\_\_ copies for distribution
- Return \_\_\_\_\_ corrected prints
- PRINTS RETURNED AFTER LOAN TO US

**REMARKS** \_\_\_\_\_  
 \_\_\_\_\_  
 \_\_\_\_\_  
 \_\_\_\_\_  
 \_\_\_\_\_  
 \_\_\_\_\_

**COPY TO** \_\_\_\_\_

**SIGNED:** Jim Lelie  
 972-450-2879

If enclosures are not as noted, please notify us at once.



# Memorandum

DATE: May 29, 2001

TO: Jim Pierce, Assistant Director of Public Works

FROM: Slade Strickland, Director of Parks & Recreation 972-450-2869

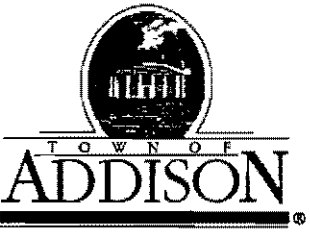
**SUBJECT: Dart Parking Lot Expansion**

---

Dart will need to submit a detailed landscape and irrigation plan for review and approval relating to the transit center parking lot expansion. The plan needs to indicate the percentage of proposed landscaping versus the paved areas.

Please let me know you have any questions.

Overall, 20% of the area  
needs to be in green space. This  
applies to the entire site



**Public Works / Engineering**  
16801 Westgrove • P.O. Box 9010  
Addison, Texas 75001-9010  
Telephone: (972) 450-2871 • Fax: (972) 450-2837

*JIM -  
Reviewed AS  
REQUESTED  
SZC.  
5/25/01*

# LETTER OF TRANSMITTAL

DATE	5-16-01	JOB NO.
ATTENTION		
RE:	Addison Transit Center	

TO Slade / Steve

**GENTLEMAN:**

**WE ARE SENDING YOU**

- Shop Drawings
- Copy of letter
- Attached
- Prints
- Change order

Under separate cover via \_\_\_\_\_ the following items:

- Plans
- Samples
- Specifications

COPIES	DATE	NO.	DESCRIPTION
1			Plans for parking Lot Expansion

**THESE ARE TRANSMITTED as checked below:**

- For approval
- For your use
- As requested
- For review and comment
- FOR BIDS DUE \_\_\_\_\_ 19\_\_\_\_
- Approved as submitted
- Approved as noted
- Returned for corrections
- \_\_\_\_\_
- Resubmit \_\_\_\_\_ copies for approval
- Submit \_\_\_\_\_ copies for distribution
- Return \_\_\_\_\_ corrected prints
- PRINTS RETURNED AFTER LOAN TO US

REMARKS Please review and return comments to me

Thanks

COPY TO \_\_\_\_\_

SIGNED: JIM

If enclosures are not so noted, please notify...