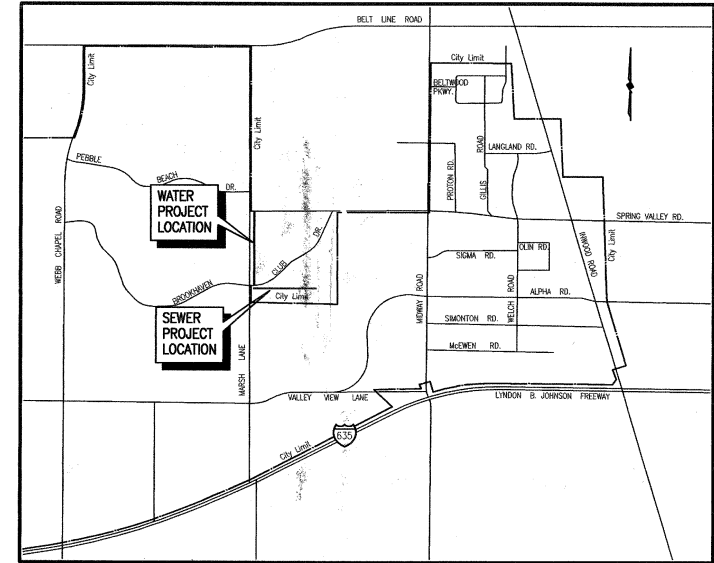


Addison!

CONSTRUCTION PLANS FOR

MARSH LANE WATER LINE & BROOKHAVEN CLUB DRIVE SANITARY SEWER LINE



LOCATION MAP

SHEET INDEX

SHEET DESCRIPTION	SHEET NO.
MARSH LANE WATER LINE STA. 0+00 TO 5+00	1
MARSH LANE WATER LINE STA. 5+00 TO 10+00	2
MARSH LANE WATER LINE STA. 10+00 TO 15+00	3
MARSH LANE WATER LINE STA. 15+00 TO 20+00	4
MARSH LANE WATER LINE STA. 20+00 TO 23+70.59/ ADDISON ROAD STORM SEWER IMPROVEMENTS	5
BROOKHAVEN CLUB DRIVE SANITARY SEWER LINE STA. 0+00 TO 5+00	6
BROOKHAVEN CLUB DRIVE SANITARY SEWER LINE STA. 5+00 TO 10+00	7
BROOKHAVEN CLUB DRIVE SANITARY SEWER LINE STA. 10+00 TO 13+79.76	8
AREA ENLARGEMENTS AND NOTES	9
ACCESS AND STORAGE AREA	10
ACCESS AND STORAGE AREA	11
VALVE ACTUATOR REPLACEMENT (LOCATION MAP)	12
VALVE ACTUATOR REPLACEMENT (PHOTOS)	13
GENERAL NOTES & DETAILS	14
DETAILS	15
DETAILS	16

CITY COUNCIL

R. SCOTT WHEELER, MAYOR
FRANK R. KLEIN, MAYOR PRO TEM
DIANE MALLORY GLYNDA TURNER
BOB BARRETT FREDRIC SILVER
CATHY WAYS

CITY MANAGER

RON WHITEHEAD

CITY ENGINEER/ DIRECTOR OF PUBLIC WORKS

MICHAEL MURPHY, P.E.

CITY SECRETARY

CARMEN MORAN

SHIMEK, JACOBS & FINKLEA, L.L.P.
CONSULTING ENGINEERS
Dallas, Texas

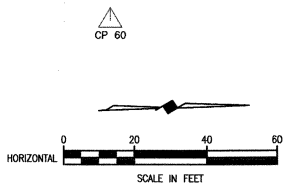
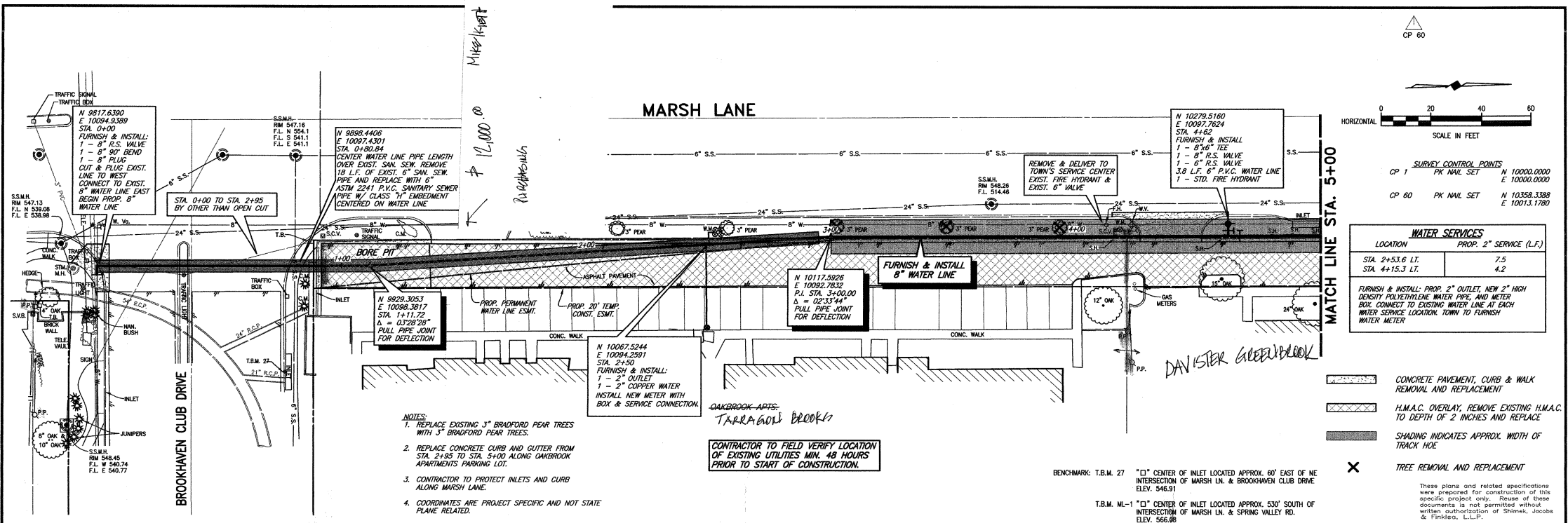
FEBRUARY, 2000

PRELIMINARY
FOR REVIEW
NOT FOR CONSTRUCTION PURPOSES
NOT FOR BIDDING PURPOSES
NOT FOR PERMIT PURPOSES



THESE DOCUMENTS ARE FOR
BIDDING, CONSTRUCTION,
AND PERMIT PURPOSES.

DATE: _____



SURVEY CONTROL POINTS

CP 1	PK NAIL SET	N 10000.0000	E 10000.0000
CP 60	PK NAIL SET	N 10358.3388	E 10013.1780

WATER SERVICES

LOCATION	PROP. 2" SERVICE (L.F.)
STA. 2+53.6 LT.	7.5
STA. 4+15.3 LT.	4.2

FURNISH & INSTALL: PROP. 2" OUTLET, NEW 2" HIGH DENSITY POLYETHYLENE WATER PIPE, AND METER BOX. CONNECT TO EXISTING WATER LINE AT EACH WATER SERVICE LOCATION. TOWN TO FURNISH WATER METER.

- CONCRETE PAVEMENT, CURB & WALK REMOVAL AND REPLACEMENT
- H.M.A.C. OVERLAY, REMOVE EXISTING H.M.A.C. TO DEPTH OF 2 INCHES AND REPLACE
- SHADING INDICATES APPROX. WIDTH OF TRACK HOE
- TREE REMOVAL AND REPLACEMENT

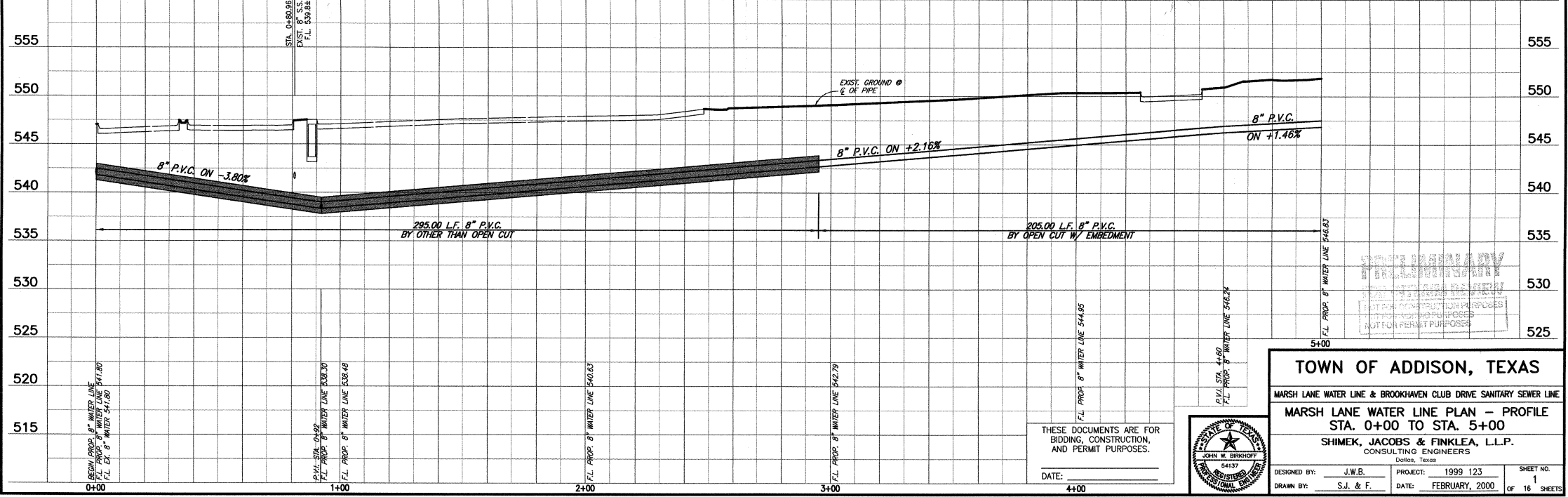
- NOTES:**
- REPLACE EXISTING 3" BRADFORD PEAR TREES WITH 3" BRADFORD PEAR TREES.
 - REPLACE CONCRETE CURB AND GUTTER FROM STA. 2+95 TO STA. 5+00 ALONG OAKBROOK APARTMENTS PARKING LOT.
 - CONTRACTOR TO PROTECT INLETS AND CURB ALONG MARSH LANE.
 - COORDINATES ARE PROJECT SPECIFIC AND NOT STATE PLANE RELATED.

CONTRACTOR TO FIELD VERIFY LOCATION OF EXISTING UTILITIES MIN. 48 HOURS PRIOR TO START OF CONSTRUCTION.

BENCHMARK: T.B.M. 27 "Q" CENTER OF INLET LOCATED APPROX. 60' EAST OF NE INTERSECTION OF MARSH LN. & BROOKHAVEN CLUB DRIVE. ELEV. 546.91

T.B.M. ML-1 "Q" CENTER OF INLET LOCATED APPROX. 530' SOUTH OF INTERSECTION OF MARSH LN. & SPRING VALLEY RD. ELEV. 566.88

These plans and related specifications were prepared for construction of this specific project only. Reuse of these documents is not permitted without written authorization of Shimke, Jacobs & Finklea, L.L.P.



TOWN OF ADDISON, TEXAS

MARSH LANE WATER LINE & BROOKHAVEN CLUB DRIVE SANITARY SEWER LINE

MARSH LANE WATER LINE PLAN - PROFILE
STA. 0+00 TO STA. 5+00

SHIMKE, JACOBS & FINKLEA, L.L.P.
CONSULTING ENGINEERS
Dallas, Texas

DESIGNED BY: J.W.B.

DRAWN BY: S.J. & F.

PROJECT: 54137 (SUSTAINED)

DATE: 1999 123

DATE: FEBRUARY, 2000

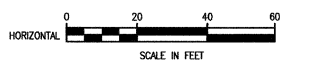
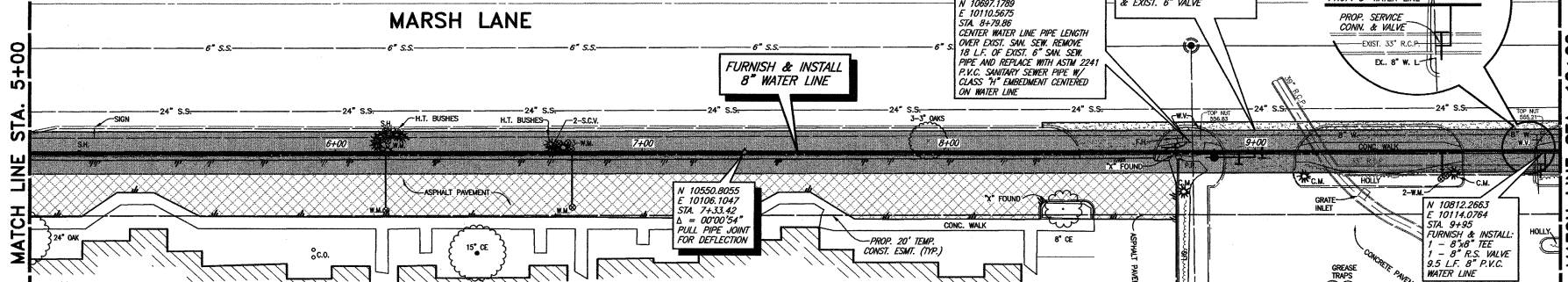
SHEET NO. 1

OF 16 SHEETS

REvised 10/02/00 CAD 89123-01.DWG SCALE: 1"=20' BLOCKS: PROFILE

CP 60

CP 561



SURVEY CONTROL POINTS
 CP 60 PK NAIL SET N 10358.3388
 E 10013.1780
 CP 561 PK NAIL SET N 10759.9079
 E 10025.8270

WATER SERVICES	
LOCATION	PROP. 2" SERVICE (L.F.)
STA. 6+14.7 LT.	5.3
STA. 6+16.5 RT.	18.1
STA. 6+19 RT.	2.2
STA. 6+72.4 LT.	17.1
STA. 9+61.4 RT.	8.4

FURNISH & INSTALL: PROP. 2" OUTLET, NEW 2" HIGH DENSITY POLYETHYLENE WATER PIPE, AND METER BOX. CONNECT TO EXISTING WATER LINE AT EACH WATER SERVICE LOCATION. TOWN TO FURNISH WATER METER.

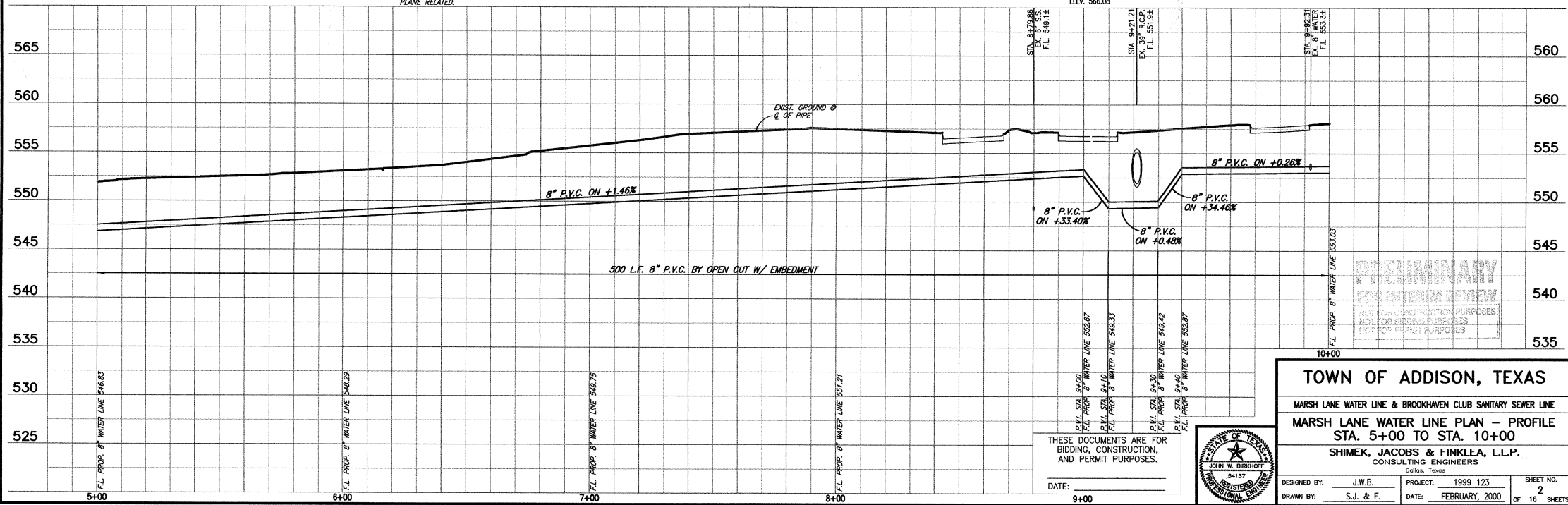
- NOTES:
1. REPLACE EXISTING HAWTHORNE BUSHES WITH 5 GALLON HAWTHORNE BUSHES.
 2. REPLACE CONCRETE CURB AND GUTTER FROM STA. 5+00 TO STA. 8+41.65 ALONG THE BROOKS APARTMENTS PARKING LOT.
 3. ADJUST WATER METER BOXES IN H.M.A.C. OVERLAY AREAS TO MATCH FINAL GRADE OF OVERLAY.
 4. REPLACE SIDEWALK FROM STA. 9+13.51 TO STA. 9+67.65 AND STA. 9+91.78 TO STA. 10+00.
 5. CONTRACTOR TO PROTECT INLETS AND CURB ALONG MARSH LANE.
 6. COORDINATES ARE PROJECT SPECIFIC AND NOT STATE PLANE RELATED.

CONTRACTOR TO FIELD VERIFY LOCATION OF EXISTING UTILITIES MIN. 48 HOURS PRIOR TO START OF CONSTRUCTION.

BENCHMARK: T.B.M. 27 "O" CENTER OF INLET LOCATED APPROX. 60' EAST OF NE INTERSECTION OF MARSH LN. & BROOKHAVEN CLUB DRIVE. ELEV. 546.91
 T.B.M. ML-1 "O" CENTER OF INLET LOCATED APPROX. 530' SOUTH OF INTERSECTION OF MARSH LN. & SPRING VALLEY RD. ELEV. 566.08

- H.M.A.C. REMOVAL AND REPLACEMENT
- CONCRETE PAVEMENT, CURB & WALK REMOVAL AND REPLACEMENT
- H.M.A.C. OVERLAY, REMOVE EXISTING H.M.A.C. TO DEPTH OF 2" INCHES AND REPLACE
- SHADING INDICATES APPROX. WIDTH OF TRACK HOE

These plans and related specifications were prepared for construction of this specific project only. Reuse of these documents is not permitted without written authorization of Shimke, Jacobs & Finkbe, L.L.P.



PROVISIONAL
 THESE DOCUMENTS ARE FOR BIDDING, CONSTRUCTION, AND PERMIT PURPOSES.
 NOT FOR CONSTRUCTION PURPOSES
 NOT FOR BIDDING PURPOSES
 NOT FOR PERMIT PURPOSES

TOWN OF ADDISON, TEXAS
 MARSH LANE WATER LINE & BROOKHAVEN CLUB SANITARY SEWER LINE
 MARSH LANE WATER LINE PLAN - PROFILE
 STA. 5+00 TO STA. 10+00
 SHIMEK, JACOBS & FINKLEA, L.L.P.
 CONSULTING ENGINEERS
 Dallas, Texas

DESIGNED BY: J.W.B.
 DRAWN BY: S.J. & F.
 PROJECT: 1999 123
 DATE: FEBRUARY, 2000

THESE DOCUMENTS ARE FOR BIDDING, CONSTRUCTION, AND PERMIT PURPOSES.
 DATE: _____

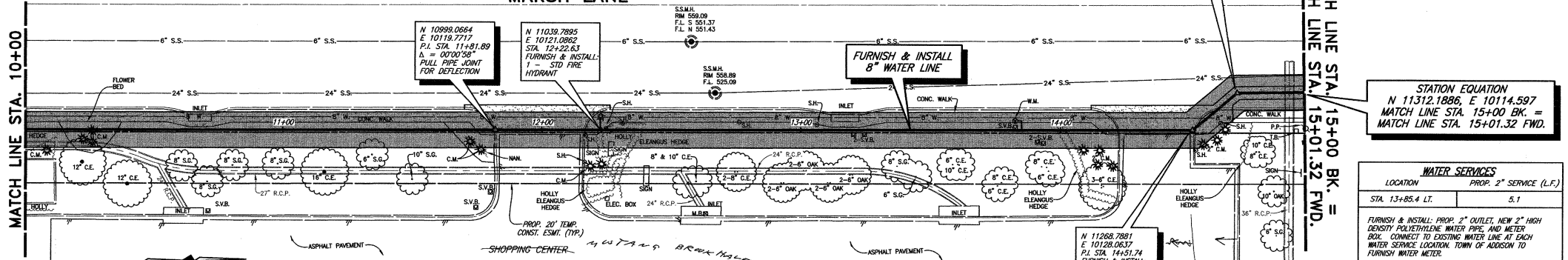
SCALE: 1"=20' BLOCKS=PROF=1/2" 98122-02.DWG

REVISIONS: 10/02/00 CAD

SHEET NO. 2 OF 16 SHEETS

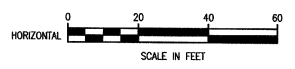
CP 829

MARSH LANE



MATCH LINE STA. 10+00

MATCH LINE STA. 15+00 BK. =
MATCH LINE STA. 15+01.32 FWD.



SURVEY CONTROL POINTS
 CP 829 PK NAIL SET N 11207.0265
 E 10039.2337
 CP 830 PK NAIL SET N 10940.2447
 E 10179.0812

- NOTES:**
- CONTRACTOR SHALL RECONSTRUCT AND REPLACE FLOWER BEDS WITH LIKE PLANTS AND FLOWERS AS DIRECTED BY TOWN OF ADDISON. FLOWER BEDS SHALL COMPOSED OF 8 INCHES OF IMPORTED TOP SOIL FOR BEDDING PLANTS.
 - CONTRACTOR SHALL PROTECT INLETS AND CURB ALONG MARSH LANE.
 - REPLACE 5' SIDEWALK FROM STA. 10+00 TO STA. 11+81.25, STA. 12.16.78 TO STA. 14+22.26 AND STA. 14+51.74 TO STA. 14+68.77, 3.84' RT.
 - COORDINATES ARE PROJECT SPECIFIC AND NOT STATE PLANE RELATED.

CONTRACTOR TO FIELD VERIFY LOCATION OF EXISTING UTILITIES MIN. 48 HOURS PRIOR TO START OF CONSTRUCTION.

BENCHMARK: T.B.M. 27 "C" CENTER OF INLET LOCATED APPROX. 60' EAST OF NE INTERSECTION OF MARSH LN. & BROOKHAVEN CLUB DRIVE. ELEV. 546.91
 T.B.M. ML-1 "D" CENTER OF INLET LOCATED APPROX. 530' SOUTH OF INTERSECTION OF MARSH LN. & SPRING VALLEY RD. ELEV. 566.08

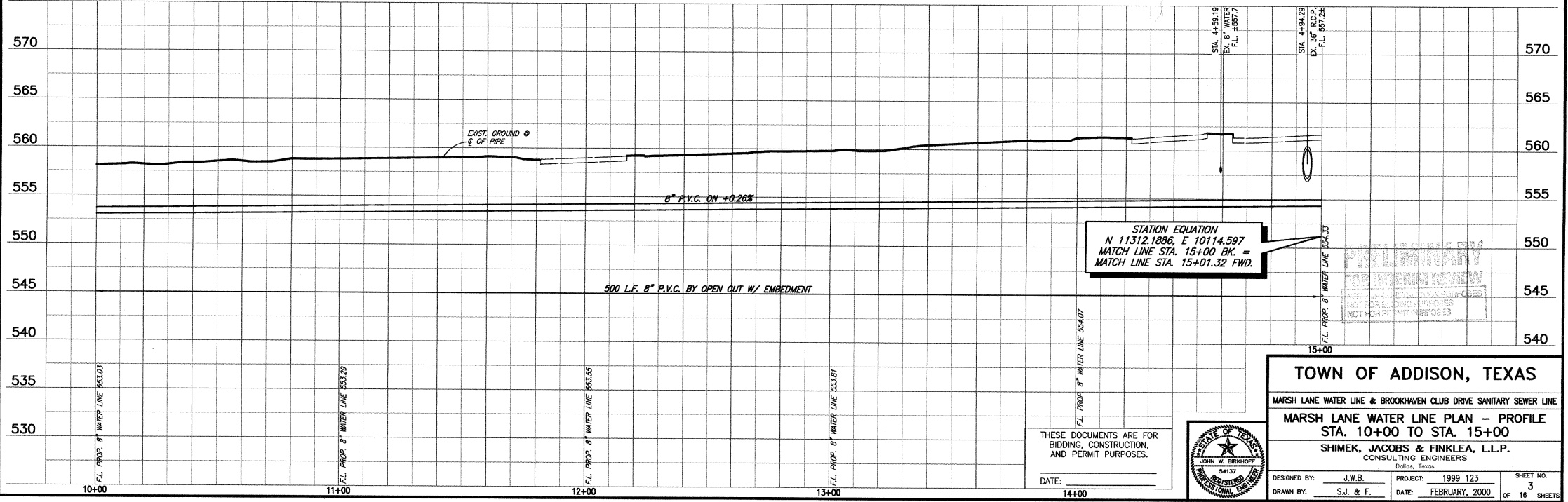
STATION EQUATION
 N 11312.1886, E 10114.597
 MATCH LINE STA. 15+00 BK. =
 MATCH LINE STA. 15+01.32 FWD.

WATER SERVICES	
LOCATION	PROP. 2" SERVICE (L.F.)
STA. 13+85.4 LT.	5.1

FURNISH & INSTALL: PROP. 2" OUTLET, NEW 2" HIGH DENSITY POLYETHYLENE WATER PIPE, AND METER BOX. CONNECT TO EXISTING WATER LINE AT EACH WATER SERVICE LOCATION. TOWN OF ADDISON TO FURNISH WATER METER.

CONCRETE PAVEMENT, CURB & WALK REMOVAL AND REPLACEMENT
 SHADING INDICATES APPROX. WIDTH OF TRACK HOE

These plans and related specifications were prepared for construction of this specific project only. Reuse of these documents is not permitted without written authorization of Shimke, Jacobs & Finklea, L.L.P.



STATION EQUATION
 N 11312.1886, E 10114.597
 MATCH LINE STA. 15+00 BK. =
 MATCH LINE STA. 15+01.32 FWD.

TOWN OF ADDISON, TEXAS

MARSH LANE WATER LINE & BROOKHAVEN CLUB DRIVE SANITARY SEWER LINE

MARSH LANE WATER LINE PLAN - PROFILE
 STA. 10+00 TO STA. 15+00

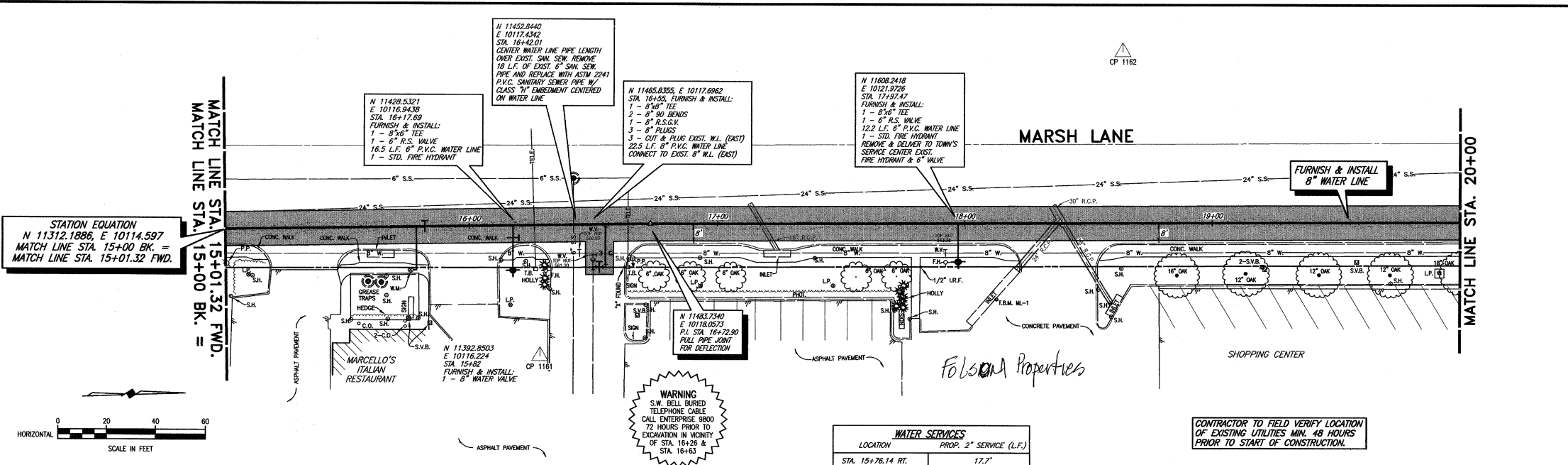
SHIMEKE, JACOBS & FINKLEA, L.L.P.
 CONSULTING ENGINEERS
 Dallas, Texas

DESIGNED BY: J.W.B. PROJECT: 1999 123 SHEET NO. 3
 DRAWN BY: S.J. & F. DATE: FEBRUARY, 2000 OF 16 SHEETS

THESE DOCUMENTS ARE FOR BIDDING, CONSTRUCTION, AND PERMIT PURPOSES.
 DATE: _____



REVISED 07/03/00 GAD 9912-03.DWG BLOOMSBURG SCALE: 1"=20'



STATION EQUATION
 N 11312.1886, E 10114.597
 MATCH LINE STA. 15+00 BK. =
 MATCH LINE STA. 15+01.32 FWD.

SURVEY CONTROL POINTS
 CP 1161 PK NAIL SET N 11437.5911
 E 10170.8581
 CP 1162 PK NAIL SET N 11676.7098
 E 10054.0723

CONCRETE PAVEMENT, CURB & WALK
 REMOVAL AND REPLACEMENT
 SHADING INDICATES APPROX. WIDTH OF
 TRACK HOE

NOTES:
 1. CONTRACTOR TO PROTECT INLETS ALONG MARSH LANE.
 2. COORDINATES ARE PROJECT SPECIFIC AND NOT STATE
 PLANE RELATED.

WARNING
 S.W. BELL BURIED
 TELEPHONE CABLE
 CALL ENTERPRISE 9800
 72 HOURS PRIOR TO
 EXCAVATION IN VICINITY
 OF STA. 16+26 &
 STA. 16+63

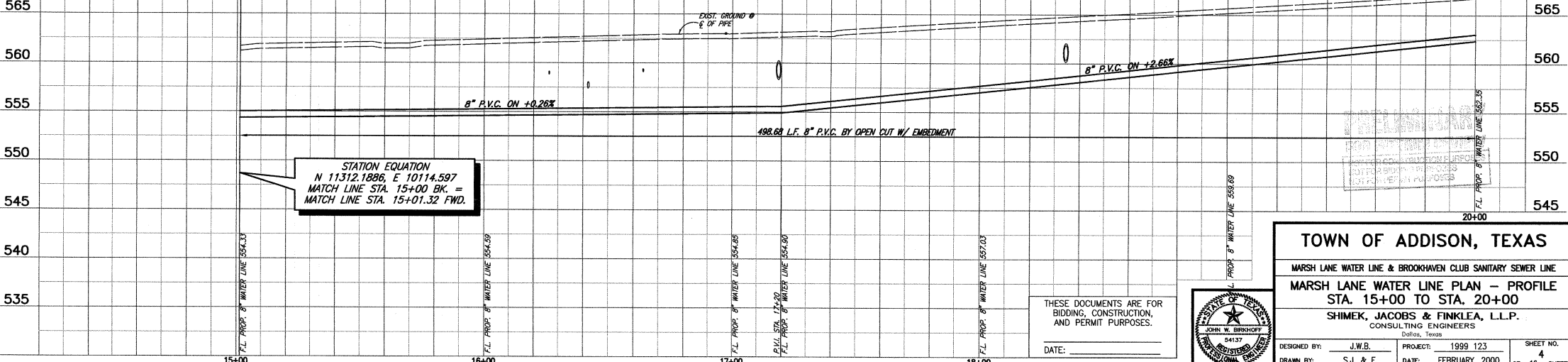
WATER SERVICES
 LOCATION PROP. 2" SERVICE (L.F.)
 STA. 15+76.14 RT. 17.7'

BENCHMARK: T.B.M. 27 "D" CENTER OF INLET LOCATED APPROX. 60' EAST OF NE
 INTERSECTION OF MARSH LN. & BROOKHAVEN CLUB DRIVE
 ELEV. 546.91

T.B.M. M-1 "D" CENTER OF INLET LOCATED APPROX. 530' SOUTH OF
 INTERSECTION OF MARSH LN. & SPRING VALLEY RD.
 ELEV. 566.08

CONTRACTOR TO FIELD VERIFY LOCATION
 OF EXISTING UTILITIES MIN. 48 HOURS
 PRIOR TO START OF CONSTRUCTION.

These plans and related specifications
 were prepared for construction of this
 specific project only. Reuse of these
 documents is not permitted without
 written authorization of Shimek, Jacobs
 & Finklea, L.L.P.

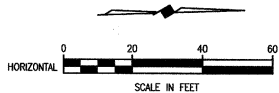


REVISION 07/17/00 GAD 98125-DADING SCALE: 1"=20' BLOCKS:PROF:W4

DESIGNED BY: J.W.B. PROJECT: 1999 123 SHEET NO. 4
 DRAWN BY: S.J. & F. DATE: FEBRUARY, 2000 OF 16 SHEETS



TOWN OF ADDISON, TEXAS
 MARSH LANE WATER LINE & BROOKHAVEN CLUB SANITARY SEWER LINE
 MARSH LANE WATER LINE PLAN - PROFILE
 STA. 15+00 TO STA. 20+00
 SHIMEK, JACOBS & FINKLEA, L.L.P.
 CONSULTING ENGINEERS
 Dallas, Texas



WATER SERVICES	
LOCATION	PROP. 2" SERVICE (L.F.)
STA. 21+75.2 RT.	11.4
STA. 22+01.7 RT.	14.3

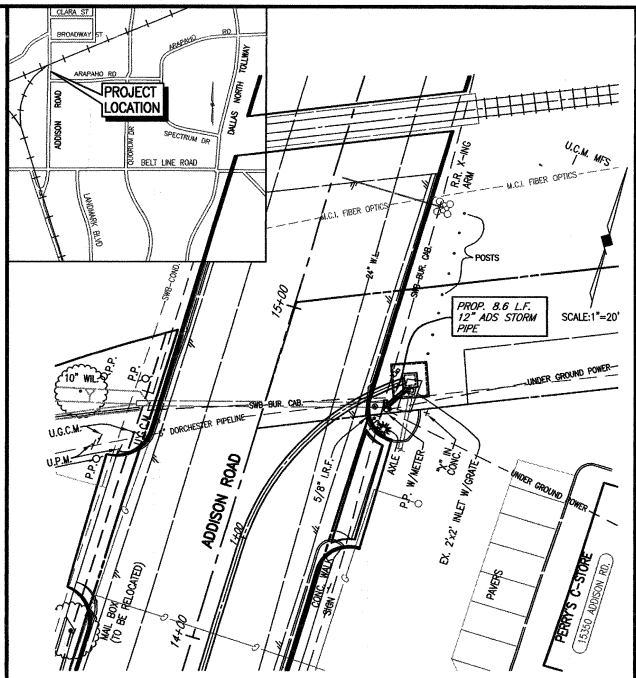
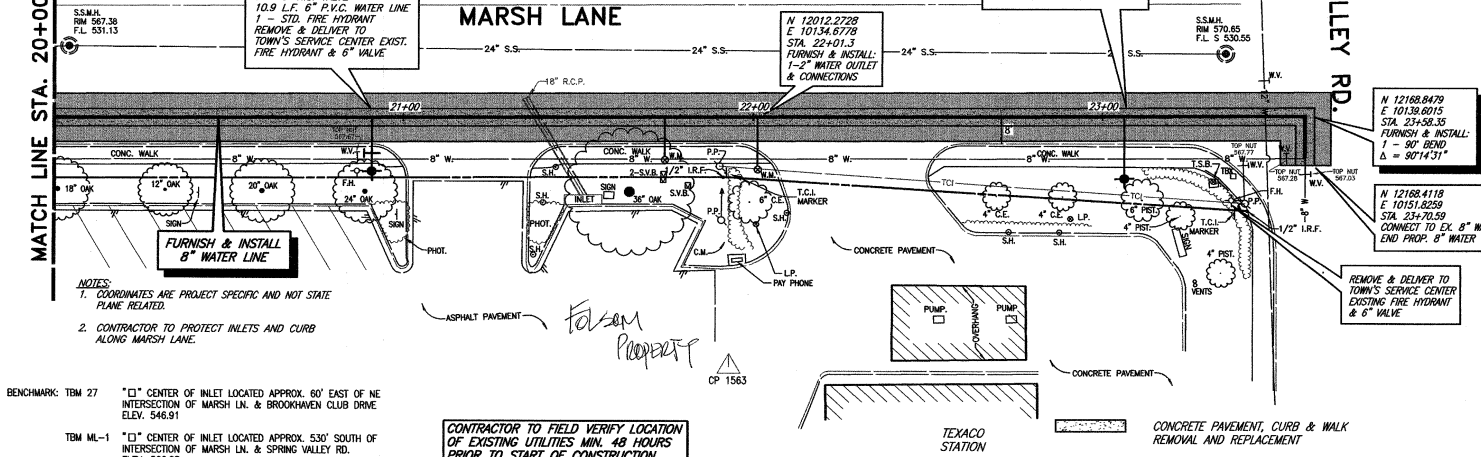
FURNISH & INSTALL: PROP. 2" OUTLET, NEW 2" HIGH DENSITY POLYETHYLENE WATER PIPE, AND METER BOX. CONNECT TO EXISTING WATER LINE AT EACH WATER SERVICE LOCATION. TOWN TO FURNISH WATER METER.

SURVEY CONTROL POINTS
 CP 1478 PK NAIL SET N 12044.0625 E 10066.3498
 CP 1563 PK NAIL SET N 12001.6704 E 10206.8181

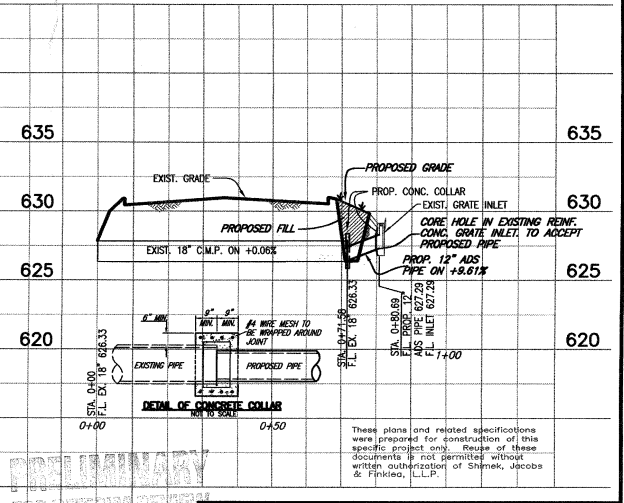
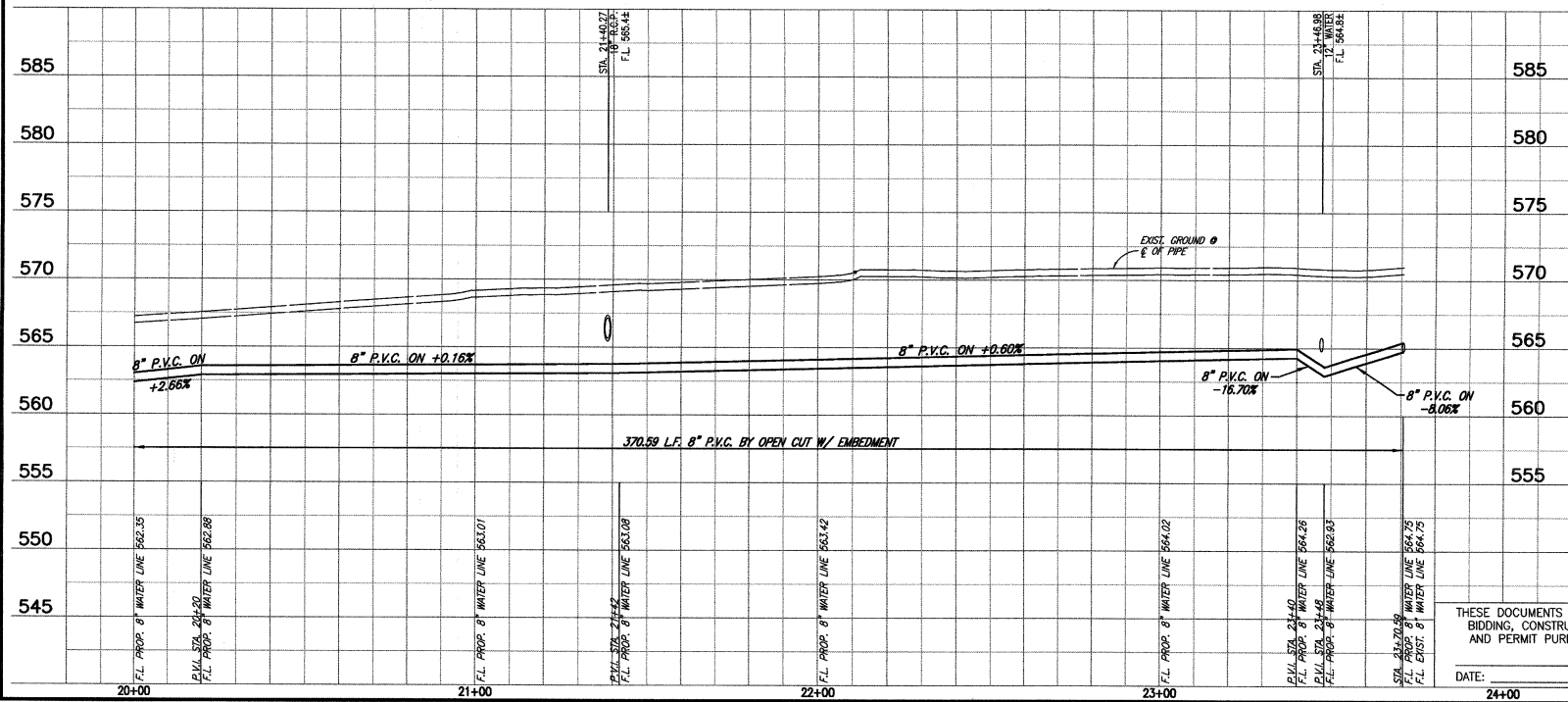
MATCH LINE STA. 20+00

MARSH LANE

SPRING VALLEY RD.



ADDISON RD. IMPROVEMENTS
 PROP. 12" ADS STORM SEWER



TOWN OF ADDISON, TEXAS

MARSH LANE WATER LINE & BROOKHAVEN CLUB DRIVE SANITARY SEWER LINE
 MARSH LANE WATER LINE PLAN - PROFILE
 STA. 20+00 TO STA. 23+70.59

SHIMEK, JACOBS & FINKLEA, L.L.P.
 CONSULTING ENGINEERS
 Dallas, Texas

DESIGNED BY: J.W.B. PROJECT: 1999 123 SHEET NO. 5
 DRAWN BY: S.J. & F. DATE: FEBRUARY, 2000 OF 16 SHEETS

REvised 07/03/00 CAD 99125-CDDING SCALE: 1=20 BLOCKS-PROFING

THESE DOCUMENTS ARE FOR BIDDING, CONSTRUCTION, AND PERMIT PURPOSES.

DATE: _____

