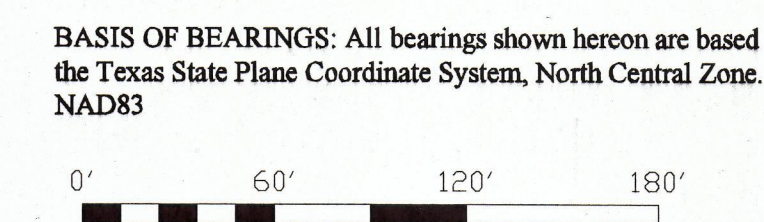
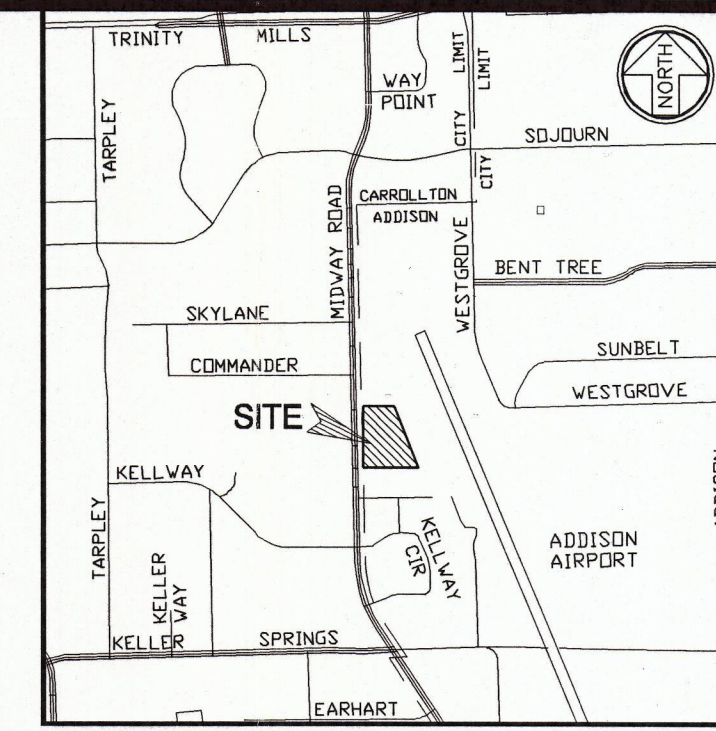
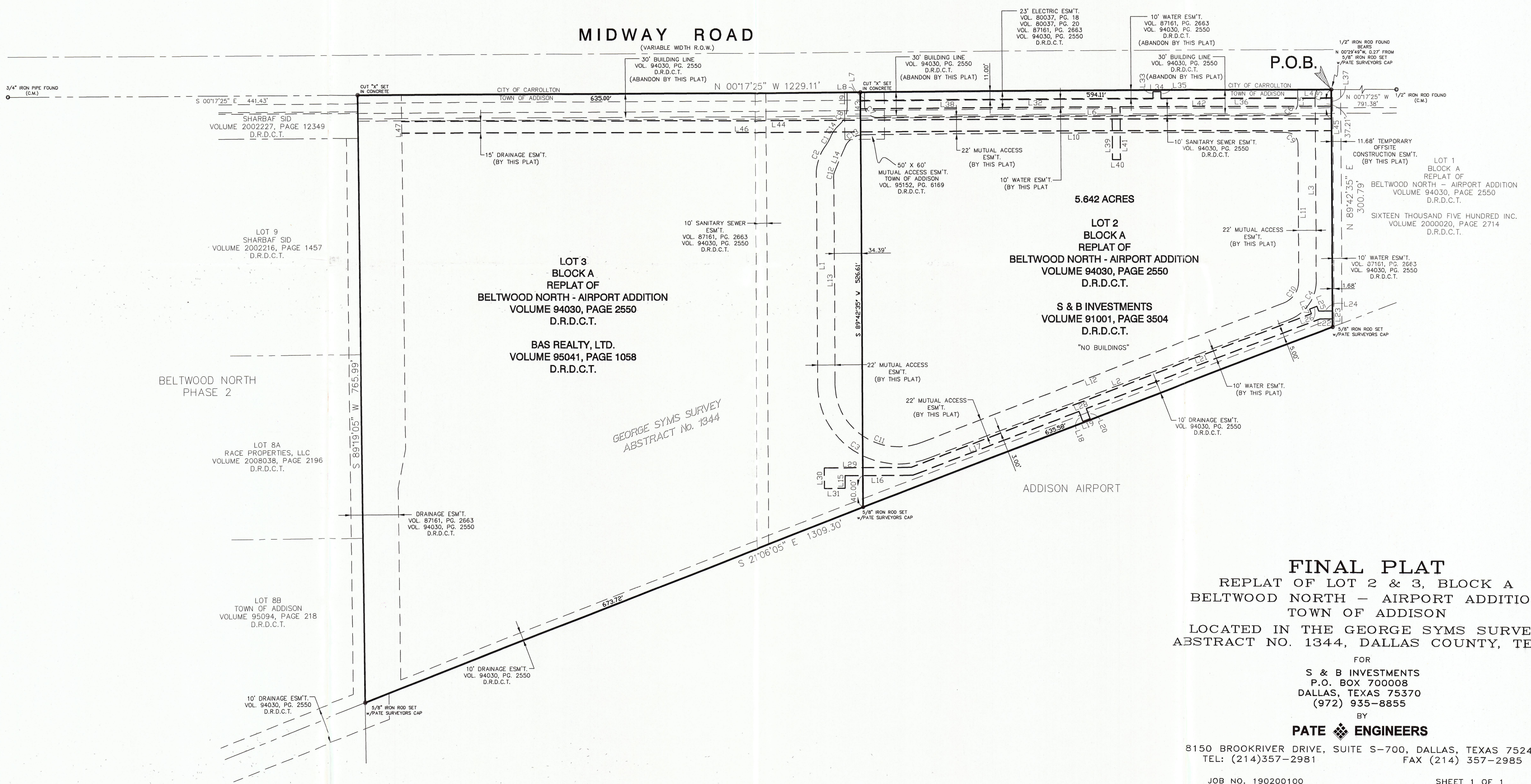


LINE TABLE					
LINE	BEARING	LENGTH	LINE	BEARING	LENGTH
L1	N89°42'35"E	270.09	L25	S88°53'55"W	6.43
L2	N21°06'05"W	489.77	L26	S21°06'05"E	10.00
L3	S89°42'35"W	232.77	L27	N68°53'55"E	6.28
L4	S00°17'25"E	24.61	L28	S21°06'05"E	541.53
L5	N89°42'35"E	17.00	L29	S00°17'25"E	109.81
L6	S00°17'25"E	516.50	L30	N89°42'35"E	26.14
L7	S89°42'35"W	17.00	L31	N00°17'25"W	26.30
L8	S00°17'25"E	22.00	L32	N00°17'25"W	368.88
L9	N89°42'35"E	18.80	L33	S89°42'35"W	8.91
L10	N00°17'25"W	533.25	L34	N00°17'25"W	10.00
L11	N89°42'35"E	173.77	L35	N89°42'35"E	8.91
L12	S21°06'05"E	489.82	L36	N00°17'25"W	215.23
L13	S89°42'35"W	263.70	L37	N89°42'35"E	10.00
L14	N68°53'55"E	34.25	L38	N00°17'25"W	317.12
L15	S89°42'35"W	16.14	L39	N89°42'35"E	67.50
L16	N00°17'25"W	85.35	L40	N00°17'25"W	10.00
L17	N21°06'05"W	224.35	L41	S89°42'35"W	67.50
L18	N68°53'55"E	13.50	L42	N00°17'25"W	266.99
L19	N21°06'05"W	10.00	L43	S89°42'35"W	10.00
L20	S68°53'55"W	13.50	L44	S00°07'15"E	1173.88
L21	N21°06'05"W	316.79	L45	N89°42'35"E	15.00
L22	N00°17'25"W	15.91	L46	S00°07'15"E	1173.78
L23	S89°42'35"W	10.00	L47	S89°19'05"W	15.00
L24	S00°17'25"E	17.33	L47	S89°19'05"W	15.00

CURVE TABLE					
CURVE	DELTA	RADIUS	LENGTH	CHORD BEARING	CHORD
C1	16°12'38"	30.00	8.49	N60°41'45"W	8.46
C2	3°08'13"	63.85	36.93	S69°09'32"E	36.42
C3	111°03'38"	102.00	197.71	N34°10'46"E	168.18
C4	69°11'18"	62.00	62.79	N53°41'44"W	59.05
C5	23°12'17"	20.50	10.45	S75°41'16"E	10.34
C6	90°00'00"	15.00	23.56	N45°17'25"W	21.21
C7	90°00'00"	15.00	23.56	N44°42'35"E	21.21
C8	47°59'02"	30.00	25.12	N66°17'54"W	24.40
C9	90°00'00"	15.00	23.56	S44°42'35"W	21.21
C10	69°11'20"	30.00	36.23	N53°41'45"W	34.07
C11	111°03'34"	80.00	155.11	N34°09'48"E	131.93
C12	23°19'35"	15.00	6.11	S78°37'37"E	6.06
C13	66°40'25"	25.00	29.09	S33°37'37"E	27.48
C14	26°29'41"	47.00	21.73	S55°33'14"E	21.54



BASIS OF BEARINGS: All bearings shown hereon are based on the Texas State Plane Coordinate System, North Central Zone, NAD83



FINAL PLAT
 REPLAT OF LOT 2 & 3, BLOCK A
 BELTWOOD NORTH - AIRPORT ADDITION
 TOWN OF ADDISON
 LOCATED IN THE GEORGE SYMS SURVEY,
 ABSTRACT NO. 1344, DALLAS COUNTY, TEXAS

FOR
S & B INVESTMENTS
 P.O. BOX 700008
 DALLAS, TEXAS 75370
 (972) 935-8855

BY
PATE ENGINEERS
 8150 BROOKRIVER DRIVE, SUITE S-700, DALLAS, TEXAS 75247
 TEL: (214)357-2981 FAX (214) 357-2985

JOB NO. 190200100 SHEET 1 OF 1

X:\p\190200100\190200100.dwg Plot Date: 11/10/2010 10:55:14 AM Scale: 1/8"=1'-0" Plot Size: 11.00 x 17.00