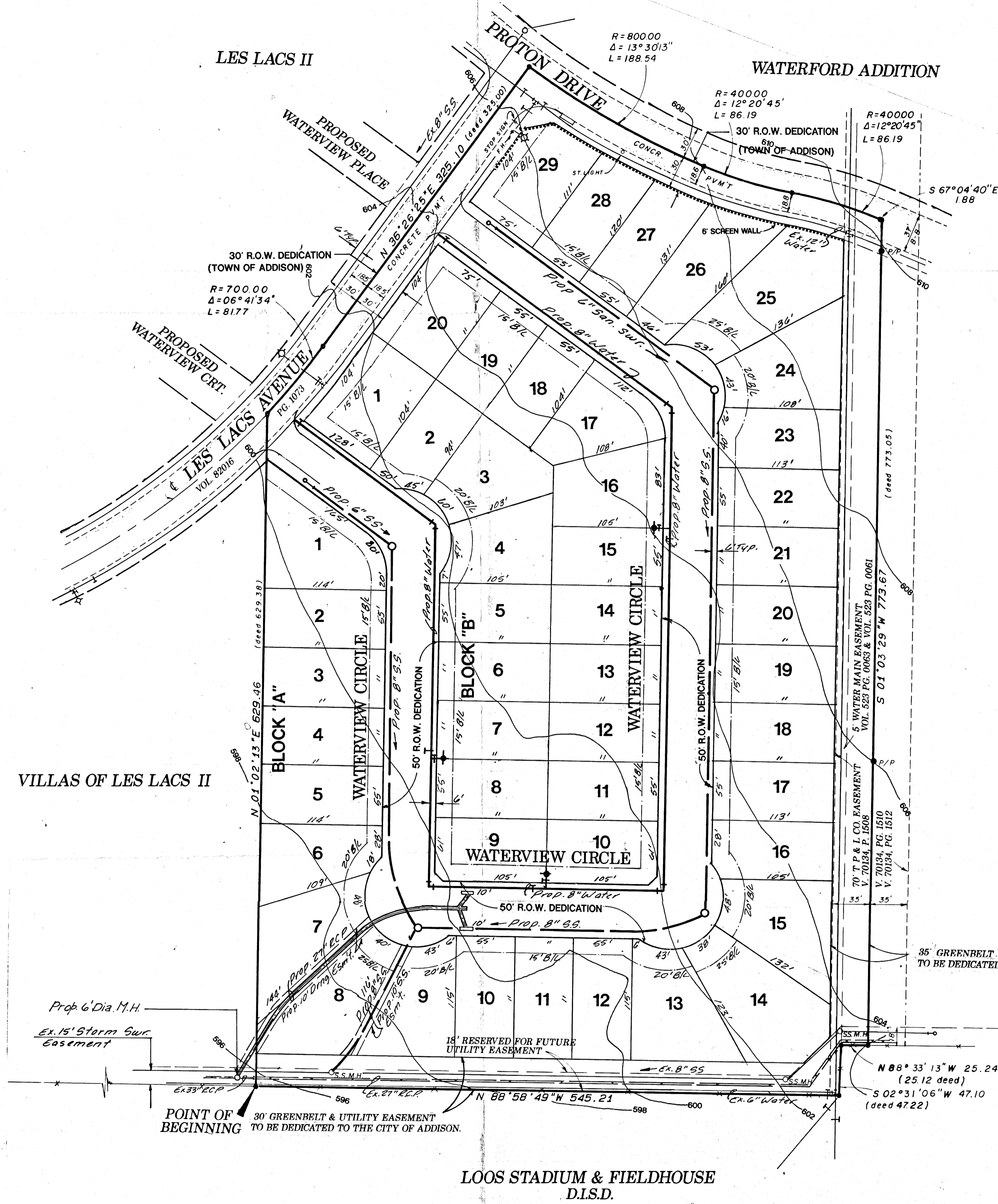


LOCATION MAP
NORTH
NOT TO SCALE

UTILITY KEY

- PROPOSED STORM LINE
- PROPOSED WATER LINE
- PROPOSED SANITARY SEWER LINE
- EXISTING FIRE HYDRANT
- PROPOSED FIRE HYDRANT
- EXISTING MANHOLE
- PROPOSED MANHOLE



DATA SUMMARY

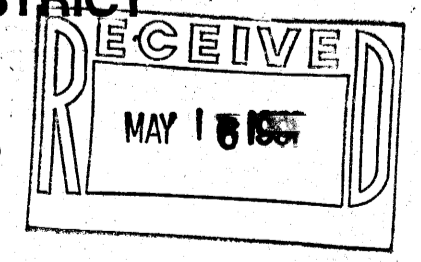
GROSS LAND AREA: _____ 11.003 ACRES
 TOTAL NUMBER OF LOTS: _____ 49
 REQUIRED NUMBER OF LOTS GREATER THAN OR EQUAL TO 7500 SQ. FT.: _____ 12
 NUMBER OF LOTS GREATER THAN OR EQUAL TO 7500 SQ. FT.: _____ 12
 LOTS WITH AT LEAST 7,500 SQ. FT.:
 BLOCK "A" _____ LOTS 1,7,8,9,13,14,15,24,25,29
 BLOCK "B" _____ LOTS 1,20

49 LOTS
 PRELIMINARY PLAT
 OF
WATERVIEW ESTATES
 AN ADDITION TO THE
 TOWN OF ADDISON, DALLAS COUNTY, TEXAS
 OUT OF THE
 THOMAS L. CHENOWITH SURVEY, ABSTRACT NO. 273

"MXR"
 MIXED USE RESIDENTIAL DISTRICT

11.003 ACRES

APPROVED
 WITH CONDITIONS
 MAY 1 1991

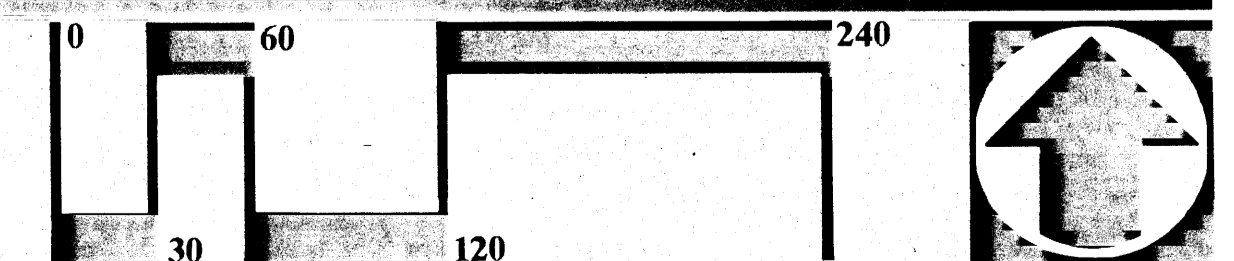


THE NELSON CORPORATION
 Land Planning • Engineering • Surveying
 5999 Summerside Drive, Suite 202
 Dallas, Texas 75252 • (214) 380-2605

OWNER:
 SUNDIAL GROUP, INC.
 One Beach Drive, Suite 201
 St. Petersburg, Florida 33701
 (813) 893-1157

PLANNING & ENGINEERING:
 THE NELSON CORPORATION
 5999 Summerside Dr., Suite 202
 Dallas, Texas 75252
 (214) 380-2605

Date: MAY 3, 1991
 Revisions:
 Sheet No.:
 Job No.: 90025-2



SCALE: 1"=60'-0"