

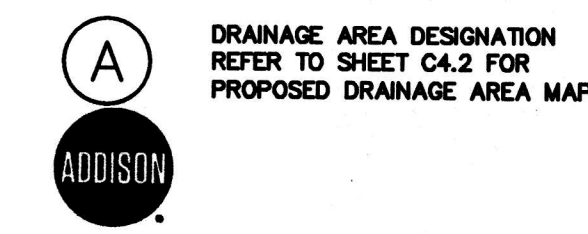
CAUTION !!
CONTRACTOR IS TO CONTACT TEXAS ONE-CALL SYSTEM (1-800-245-4545) OR OTHER UTILITY LOCATING SERVICES AT LEAST 48 HOURS PRIOR TO CONSTRUCTION ACTIVITIES. STANTEC IS NOT RESPONSIBLE FOR KNOWING ALL EXISTING UTILITIES IN THE PROJECT AREA NOR FOR DEPICTING THE EXACT LOCATIONS OF UTILITIES ON THESE DRAWINGS.

GENERAL NOTES - STORM DRAIN

- GENERAL CONSTRUCTION NOTES:** REFER TO SHEET C1.1 "GENERAL CONSTRUCTION NOTES, LEGEND AND ABBREVIATIONS" FOR THE GENERAL CONSTRUCTION NOTES FOR THE PROJECT.
- PROTECTION OF UTILITIES:** THE CONTRACTOR SHALL MAKE NECESSARY PROVISIONS FOR THE SUPPORT AND PROTECTION OF ALL UTILITY POLES, FENCES, TREES, SHRUBS, GAS MAINS, TELEPHONE CABLES, ELECTRIC CABLES, DRAINAGE PIPES, UTILITY SERVICES, AND ALL OTHER UTILITIES AND STRUCTURES BOTH ABOVE AND BELOW THE GROUND.
- PUBLIC STORM DRAIN PIPE:** UNLESS OTHERWISE NOTED ON THE DRAWINGS, ALL PIPE FOR PUBLIC STORM DRAIN IMPROVEMENTS SHALL BE REINFORCED CONCRETE PIPE (RCP), CLASS III.
GREATER THAN 36": REINFORCED CONCRETE PIPE (RCP), CLASS III
15" THROUGH 36": REINFORCED CONCRETE PIPE (RCP), CLASS III, OR HIGH DENSITY POLYETHYLENE PIPE (HDPE), N-12
4" THROUGH 12": POLYVINYL CHLORIDE PIPE (PVC), SDR - 35, OR HIGH DENSITY POLYETHYLENE PIPE (HDPE), N-12
- PRIVATE STORM DRAIN PIPE:** UNLESS OTHERWISE NOTED ON THE DRAWINGS, ALL PIPE FOR PRIVATE STORM DRAIN IMPROVEMENTS SHALL BE AS FOLLOWS:
GREATER THAN 36": REINFORCED CONCRETE PIPE (RCP), CLASS III
15" THROUGH 36": REINFORCED CONCRETE PIPE (RCP), CLASS III, OR HIGH DENSITY POLYETHYLENE PIPE (HDPE), N-12
4" THROUGH 12": POLYVINYL CHLORIDE PIPE (PVC), SDR - 35, OR HIGH DENSITY POLYETHYLENE PIPE (HDPE), N-12
- RCP JOINT SEALANT:** REINFORCED CONCRETE PIPE JOINTS SHALL BE SEALED WITH RAMNECK OR APPROVED EQUAL.
- GROUTING:** ALL PIPE ENTERING PUBLIC STORM DRAIN STRUCTURES SHALL BE GROUTED TO ASSURE WATERTIGHT CONNECTIONS.
- CONCRETE COLLARS:** CONCRETE COLLARS SHALL BE INSTALLED AT ALL CHANGES IN CONDUIT SIZE AND AT ALL JOINTS THAT ARE PULLED IN EXCESS OF THAT RECOMMENDED BY THE CONDUIT MANUFACTURER.
- ROOF DRAINS:** THE CONTRACTOR SHALL COORDINATE THE EXACT LOCATION OF ROOF DRAIN LATERALS WITH BUILDING PLANS FOR DOWNSPOUT CONNECTIONS. END AND CAP ROOF DRAIN LATERALS FIVE (5) FEET FROM BUILDING AT 4' BELOW FINISH GRADE FOR CONNECTION OF DOWNSPOUTS.
- ADJUSTMENT OF STRUCTURES:** ALL STORM DRAIN STRUCTURES INCLUDING MANHOLES, INLETS AND CLEANOUTS MUST BE ADJUSTED TO PROPER LINE AND GRADE BY THE CONTRACTOR PRIOR TO, AND AFTER, PLACEMENT OF PAVING AND GRASSING.

NOTE:
• ALL ONSITE STORM IS PRIVATE AND SHALL NOT BE MAINTAINED BY THE TOWN OF ADDISON.
• ALL STORM PIPE UNDER TOWN OF ADDISON FIRE LANE MUST BE RCP.
• DETENTION AND ORIFICE CALCULATIONS AND DETAILS PROVIDED ON SHEET C4.7

LEGEND



APPROVED FOR CONSTRUCTION

INFRASTRUCTURE & DEVELOPMENT SERVICES

BY: *[Signature]*
DATE: _____

IN APPROVING THESE PLANS, THE TOWN OF ADDISON ASSUMES NO RESPONSIBILITY FOR THEIR ADEQUACY, WHICH REMAINS WITH THE ENGINEER OF RECORD.

1801 WESTGROVE DRIVE, ADDISON, TX 75001 - (972) 450-2871

CITY OF DALLAS FILE NO: 311T-9310

BENCHMARKS:

REFERENCE BENCHMARK:
TOWN OF ADDISON CONTROL POINT NO. COA-14 LOCATED 1.730' SOUTH EAST FROM THE INTERSECTION OF LANDMARK PLACE AND LANDMARK BOULEVARD THEN 40.6' WEST OF STREET SIGN, 8.15' NORTH OF CHAINLINK FENCE AND 70.5' EAST OF STREET SIGN. ELEVATION = 623.19'

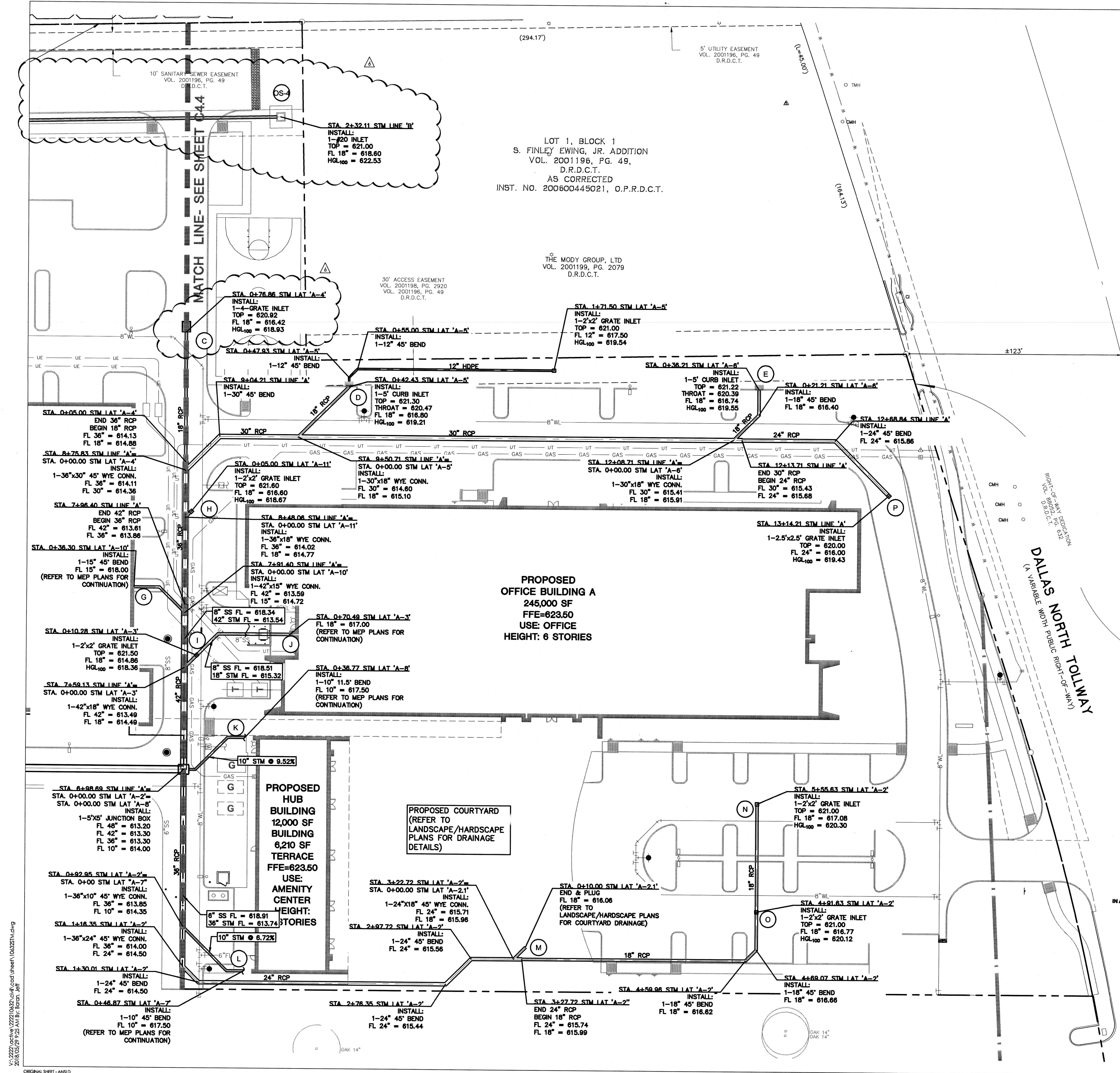
SITE BENCHMARK:
3-1/4" ALUMINUM DISK IN STAMPED "STANTEC" FOUND LOCATED APPROXIMATELY 1000' WEST FROM THE CENTERLINE OF THE SOUTHBOUND SERVICE ROAD OF THE DALLAS NORTH TOLLWAY, APPROXIMATELY 730' SOUTH FROM THE CENTERLINE OF LANDMARK BOULEVARD, POINT ALSO BEING THE SOUTHWEST CORNER OF SUBJECT TRACT. ELEVATION = 616.60'

DATE	BY	REVISION
18.04.03	JAM	18.04.03
17.08.01	JAM	17.08.01
17.07.27	JAM	17.07.27
17.06.29	JAM	17.06.29
17.06.28	JAM	17.06.28
YY.MM.DD	YY.MM.DD	YY.MM.DD

Client/Project: CAWLEY PARTNERS
Cawley - Fourteen555
14555 DALLAS PARKWAY
TOWN OF ADDISON, DALLAS COUNTY, TEXAS
Title: STORM DRAINAGE PLAN

Permit-Seal

 Project Number: 22210632
 File Name: 10632f.mxd
 Drawn: JAM
 Chkd: JAM
 Dsgn: JAM
 Date: 18.05.22
 Revision No. C4.3
 Revision Sheet



LOT 1, BLOCK 1
S. FINLEY EWING, JR. ADDITION
VOL. 2001196, PG. 49,
D.R.D.C.T.
AS CORRECTED
INST. NO. 200600445021, O.P.R.D.C.T.

THE MODY GROUP, LTD
VOL. 2001199, PG. 2079
D.R.D.C.T.

PROPOSED OFFICE BUILDING A
245,000 SF
FFE=623.50
USE: OFFICE
HEIGHT: 6 STORIES

PROPOSED HUB BUILDING
12,000 SF BUILDING
6,210 SF TERRACE
FFE=623.50
USE:
AMENITY CENTER
HEIGHT:
2 STORIES

PROPOSED COURTYARD
(REFER TO LANDSCAPE/HARDSCAPE PLANS FOR DRAINAGE DETAILS)

