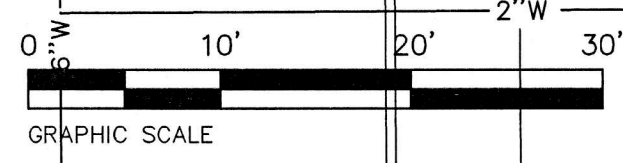
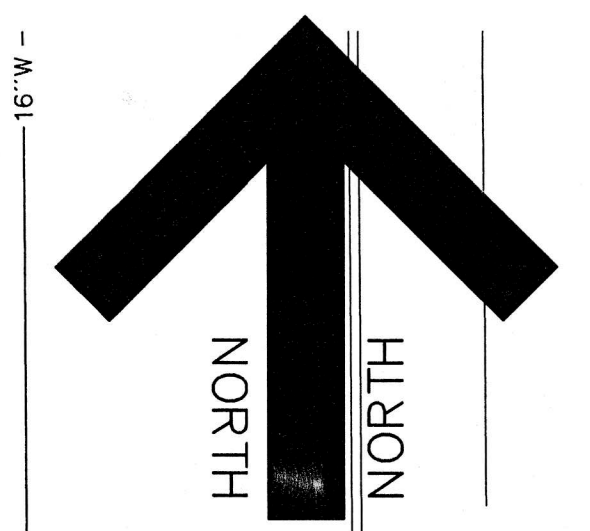
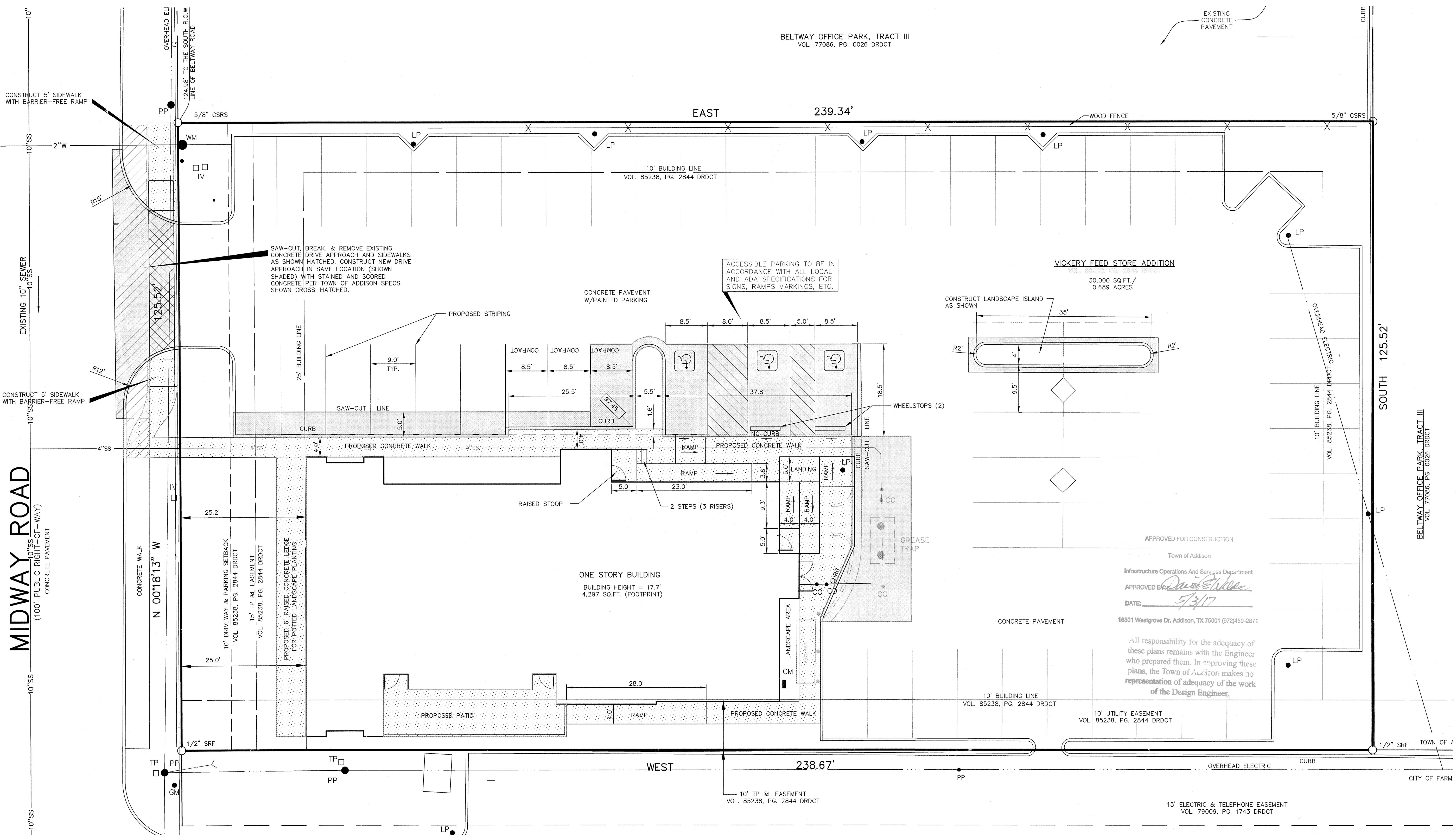


BELTWAY OFFICE PARK, TRACT III
VOL. 77086, PG. 0026 DRDCT



MIDWAY ROAD
100' PUBLIC RIGHT-OF-WAY
CONCRETE PAVEMENT



VICKERY FEED STORE ADDITION
VOL. 85238, PG. 2844 DRDCT
30,000 SQ. FT. / 0.689 ACRES

APPROVED FOR CONSTRUCTION
Town of Addison
Infrastructure Operations And Services Department
APPROVED BY: *[Signature]*
DATE: 5/31/17
16801 Westgrove Dr. Addison, TX 75001 (872)450-2871
All responsibility for the adequacy of these plans remains with the Engineer who prepared them. In approving these plans, the Town of Addison makes no representation of adequacy of the work of the Design Engineer.

PARKING TABULATION
PARKING REQUIRED - 1 SPACE PER 70 SQ. FT. BUILDING = 61 SPACES
PARKING PROVIDED - 61 SPACES INCLUDING 3 ACCESSIBLE SPACES

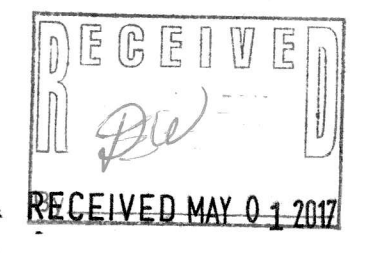
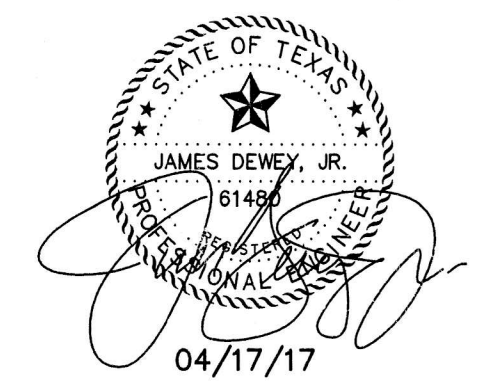
REVISIONS:	
11/03/16	PER CITY REVIEW
12/23/16	PER CITY REVIEW
1/30/17	PER OWNER
4/17/17	PER CITY REVIEW

- ACCESSIBILITY NOTES:
1. ALL ACCESSIBLE PARKING AREAS, ROUTES, RAMPS, ETC. SHALL BE CONSTRUCTED IN ACCORDANCE WITH THE TEXAS ACCESSIBILITY STANDARDS (TAS).
 2. ALL SIDEWALK RAMPS AND/OR CURB RAMPS SHOWN SHALL HAVE A MAXIMUM VERTICAL RISE OF 6" WITH A MAXIMUM RUNNING SLOPE OF 1:12 (8.33%) AND BE CONSTRUCTED IN ACCORDANCE WITH TAS SECTIONS 4.7 AND 4.8.
 3. ALL ACCESSIBLE ROUTES (EXCEPT FOR THE SIDEWALK AND CURB RAMPS) SHALL HAVE A MAXIMUM RUNNING SLOPE OF 1:20 (5%) AND A MAXIMUM CROSS SLOPE OF 1:50 (2%).
 4. ALL ACCESSIBLE PARKING SPACES AND ISLES SHALL HAVE A MAXIMUM SLOPE IN ANY DIRECTION OF 1:50 (2%). REFER TO ARCHITECTURAL PLANS FOR DETAILS OF MARKINGS, SIGNS, ETC.

- NOTES:
1. ALL CONSTRUCTION TO BE DONE IN STRICT ACCORDANCE TO THESE PLANS AND ALL APPLICABLE MUNICIPAL CODES AND STANDARDS.
 2. ALL DIMENSIONS SHOWN ARE TO THE BACK OF CURB UNLESS OTHERWISE NOTED.
 3. SEE ARCHITECTURAL PLANS FOR ALL BUILDING DIMENSIONS AND DETAILS.
 4. SEE SHEET C-2 FOR ALL PAVING AND GRADING PLANS.
 5. SEE SHEET C-5 FOR LOCATIONS AND DETAILS OF UTILITY SERVICES TO BUILDING.

LEGEND

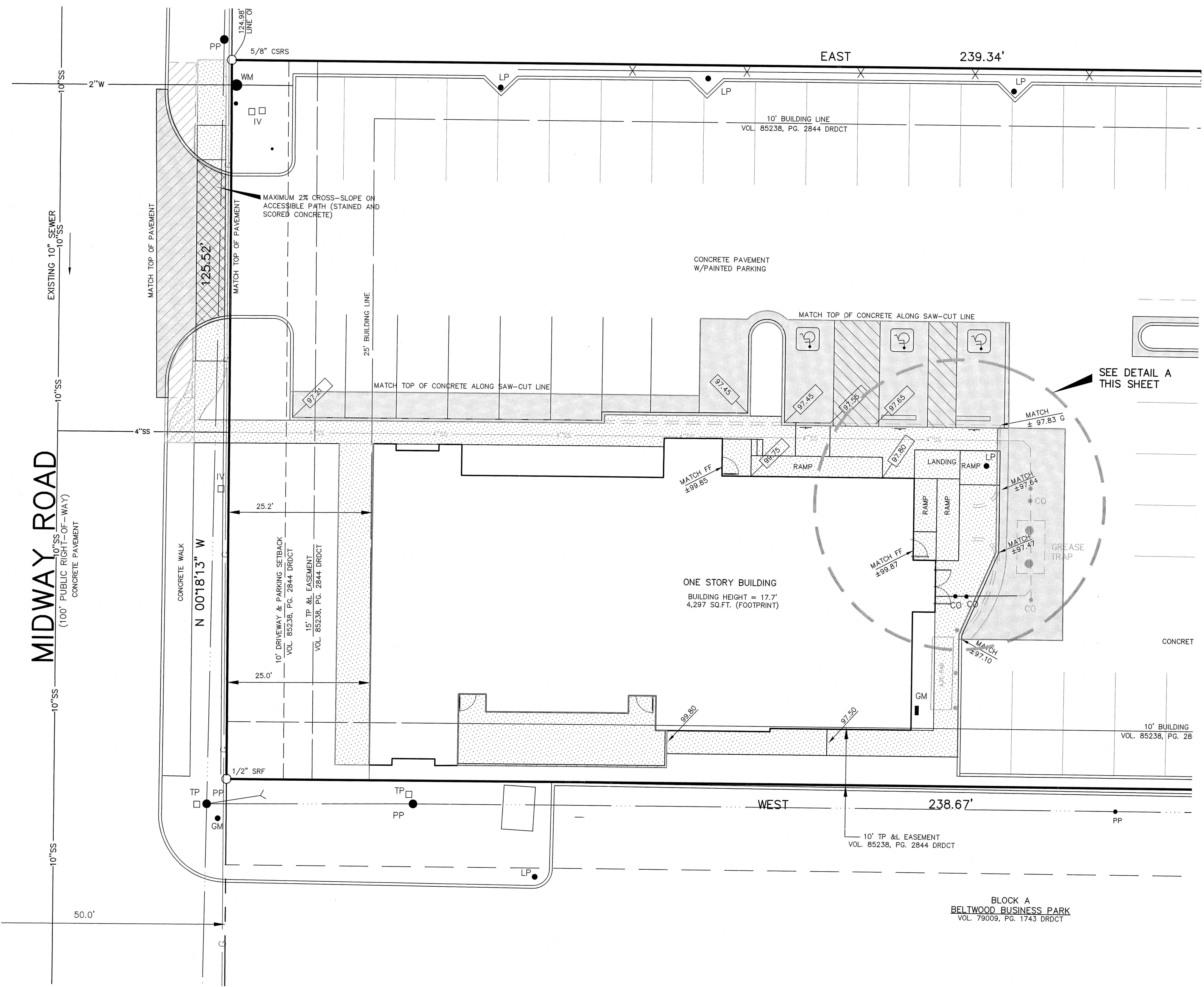
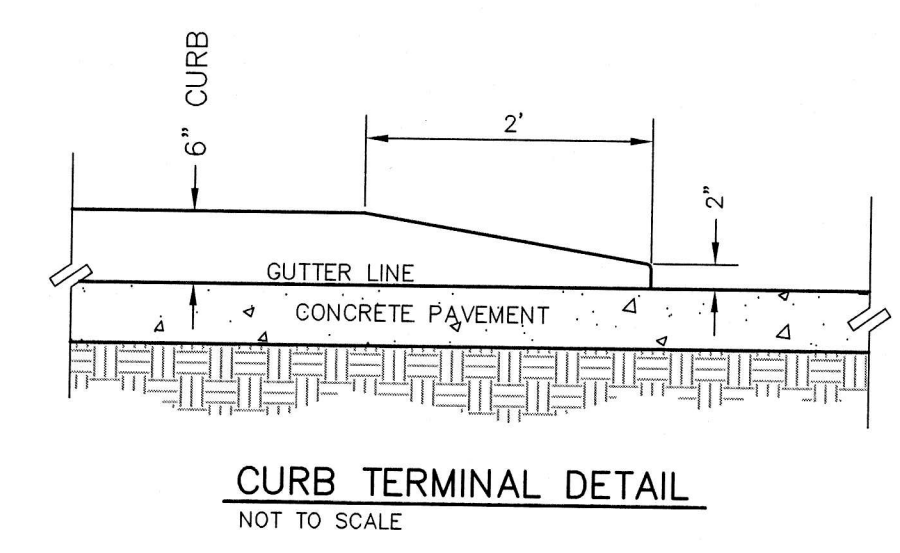
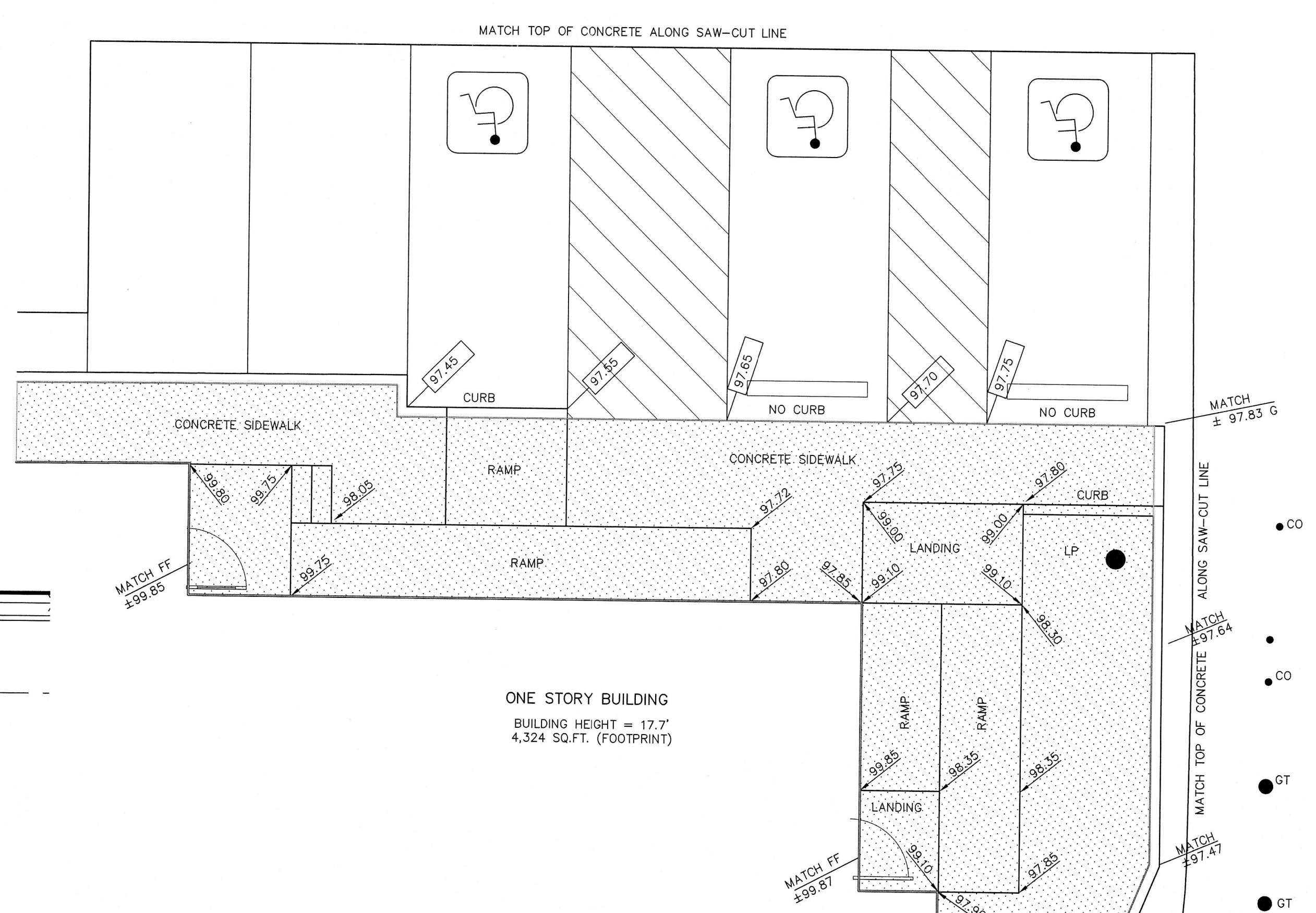
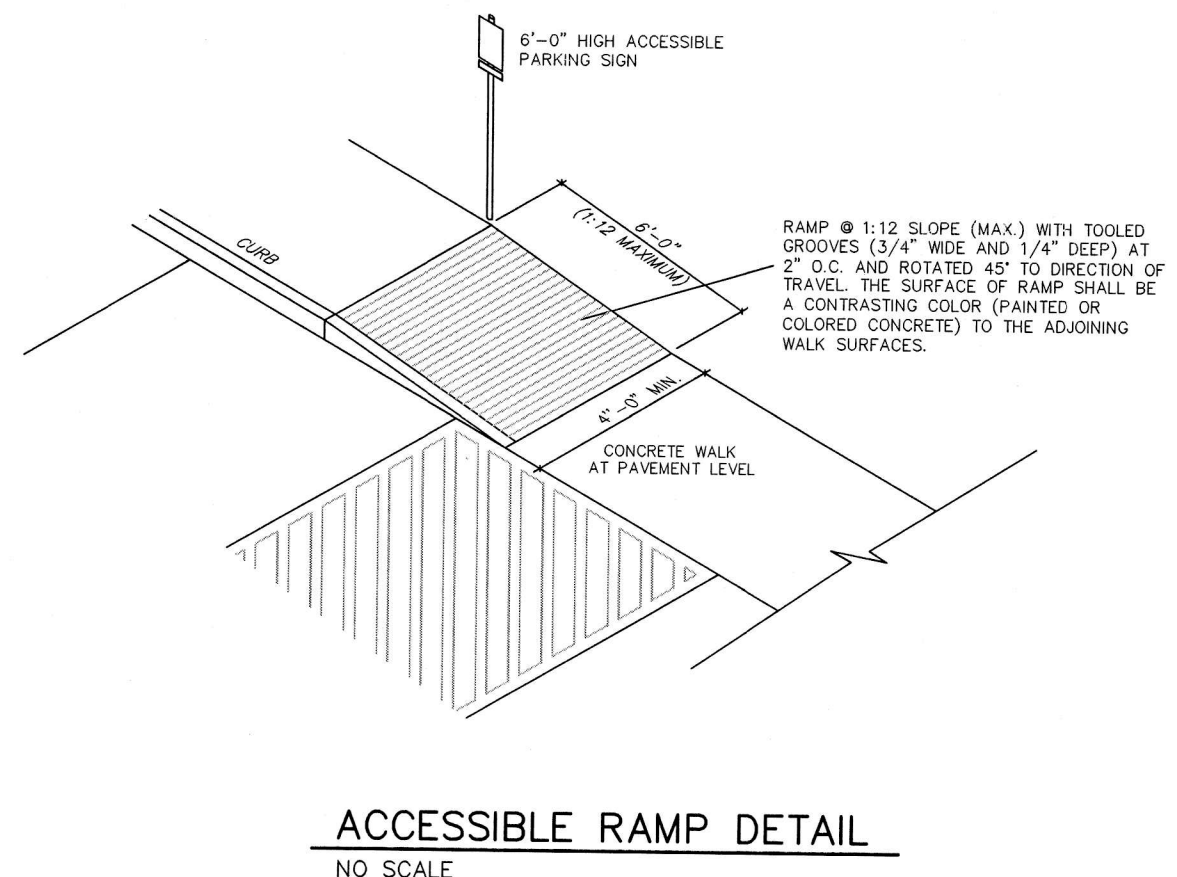
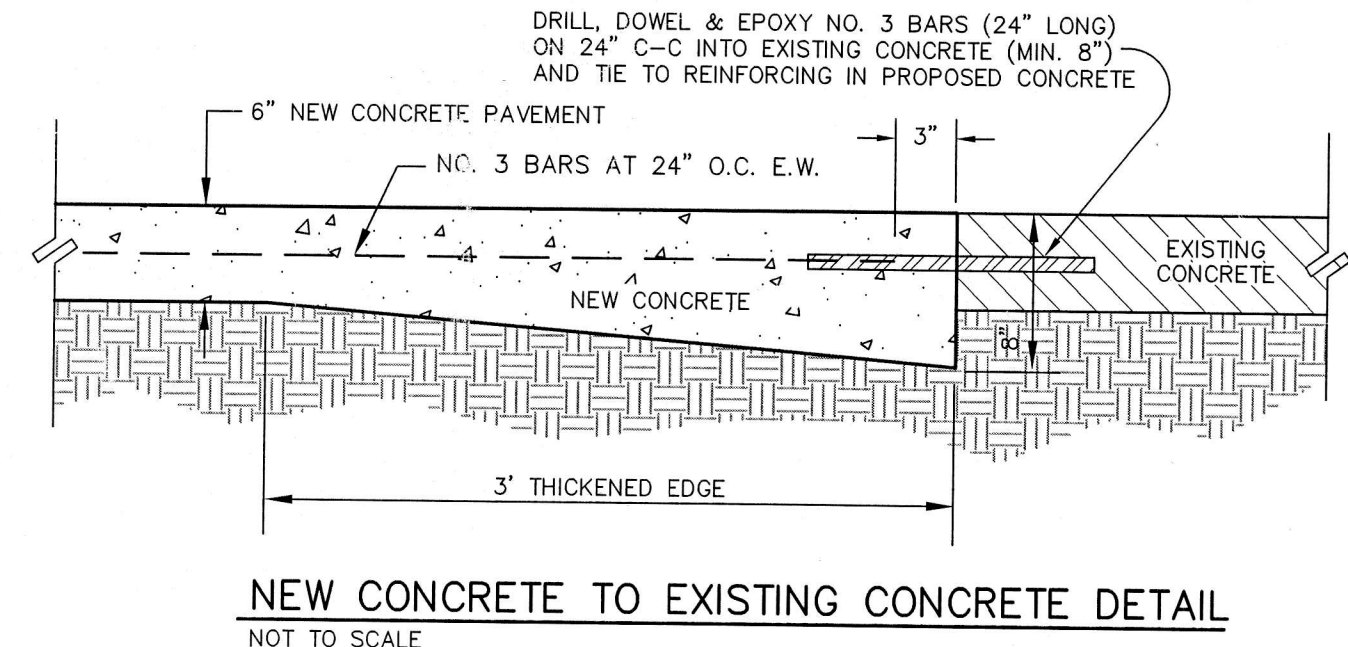
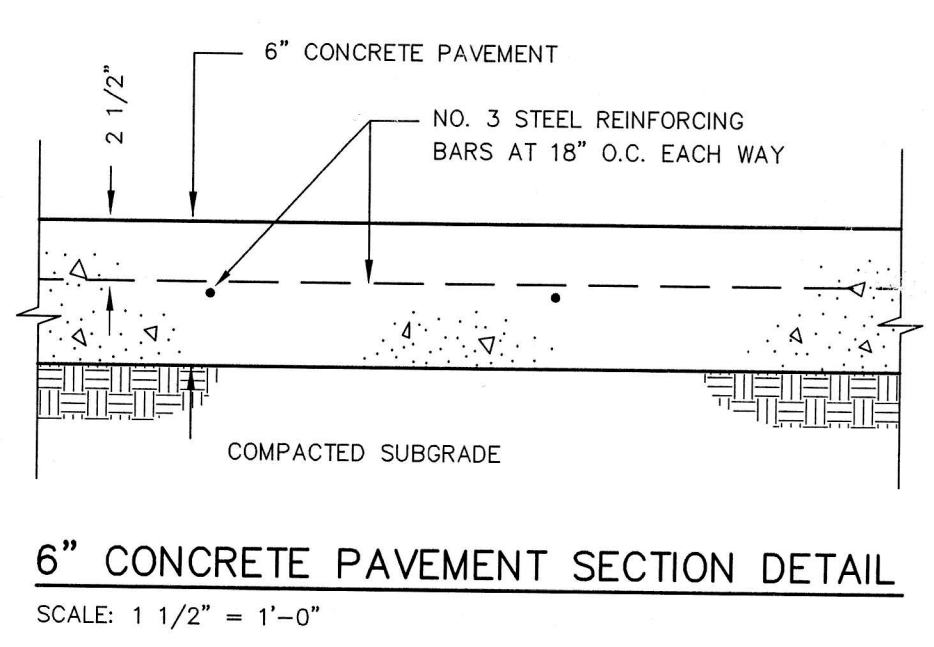
- [Patterned Box] INDICATES PROPOSED 6" CONCRETE PAVEMENT
- [Patterned Box] INDICATES PROPOSED CONCRETE SIDEWALKS



SHEET TITLE:
SITE DIMENSIONAL CONTROL PLAN
ZOLI'S NY PIZZA
14910 MIDWAY ROAD
VICKERY FEED STORE ADDITION
ADDISON, TEXAS

PREPARED BY:
JDJR ENGINEERS & CONSULTANTS, INC.
TSBPE REGISTRATION NUMBER F-8527
ENGINEERS - SURVEYORS - LAND PLANNERS
2500 Texas Drive Suite 100 Irving, Texas 75062
Tel: 972-252-5357 Fax: 972-252-8858

DATE: 10-10-16 DRAWN BY: JDJR SHEET NO.
SCALE: 1" = 10' CHECKED BY: JDJR **C1** OF **4**



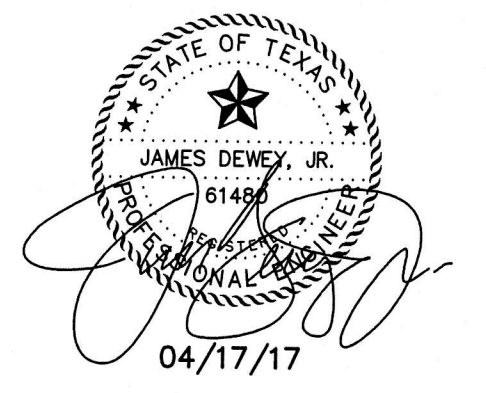
- NOTES:**
- SEE SHEET C-1 FOR ALL HORIZONTAL CONTROL DIMENSIONS.
 - ALL CONSTRUCTION SHALL BE DONE IN STRICT CONFORMANCE TO THESE PLANS AND ALL APPLICABLE MUNICIPAL CODES AND STANDARDS.
 - ALL SPOT ELEVATIONS ADJACENT TO CURBS ARE GUTTER ELEVATIONS UNLESS OTHERWISE SHOWN.
 - ALL WALKWAYS TO HAVE A MINIMUM OF 1/4" PER FOOT CROSSFALL SLOPE AWAY FROM THE BUILDING.
 - ALL SITE PAVING TO BE DONE IN ACCORDANCE TO THE RECOMMENDATIONS AS OUTLINED IN THE SOILS REPORT FOR THIS SITE.
 - ALL SITE GRADING AND SUBGRADE PREPARATION SHALL BE DONE IN ACCORDANCE TO THE RECOMMENDATIONS AS OUTLINED IN THE SOILS REPORT FOR THIS SITE.
 - ALL LANDSCAPED AREAS TO BE UNIFORMLY GRADED AS SHOWN.

- ACCESSIBILITY NOTES:**
- ALL ACCESSIBLE PARKING AREAS, ROUTES, RAMPS, ETC. SHALL BE CONSTRUCTED IN ACCORDANCE WITH THE TEXAS ACCESSIBILITY STANDARDS (TAS).
 - ALL SIDEWALK RAMPS AND/OR CURB RAMPS SHOWN SHALL HAVE A MAXIMUM VERTICAL RISE OF 6" WITH A MAXIMUM RUNNING SLOPE OF 1:12 (8.33%) AND BE CONSTRUCTED IN ACCORDANCE WITH TAS SECTIONS 4.7 AND 4.8.
 - ALL ACCESSIBLE ROUTES (EXCEPT FOR THE SIDEWALK AND CURB RAMPS) SHALL HAVE A MAXIMUM RUNNING SLOPE OF 1:20 (5%) AND A MAXIMUM CROSS SLOPE OF 1:50 (2%).
 - ALL ACCESSIBLE PARKING SPACES AND ISLES SHALL HAVE A MAXIMUM SLOPE IN ANY DIRECTION OF 1:50 (2%). REFER TO ARCHITECTURAL PLANS FOR DETAILS OF MARKINGS, SIGNS, ETC.

APPROVED FOR CONSTRUCTION
Infrastructure Operations And Services Department
APPROVED BY: *[Signature]*
DATE: 5/31/17

LEGEND

	EXISTING SPOT ELEVATION
	PROPOSED SPOT ELEVATION ON TOP OF CONCRETE
	PROPOSED SPOT ELEVATION AT GUTTER (TOP OF CURB IS 6" OR 0.5' HIGHER UNLESS SHOWN OTHERWISE)
	INDICATES PROPOSED 6" CONCRETE PAVEMENT
	INDICATES PROPOSED CONCRETE SIDEWALKS



REVISIONS:	
11/03/16	PER CITY REVIEW
12/23/16	PER CITY REVIEW
1/30/17	PER OWNER
4/17/17	PER CITY REVIEW

SHEET TITLE:
GRADING AND PAVING PLAN
ZOLI'S NY PIZZA
14910 MIDWAY ROAD
VICKERY FEED STORE ADDITION
ADDISON, TEXAS

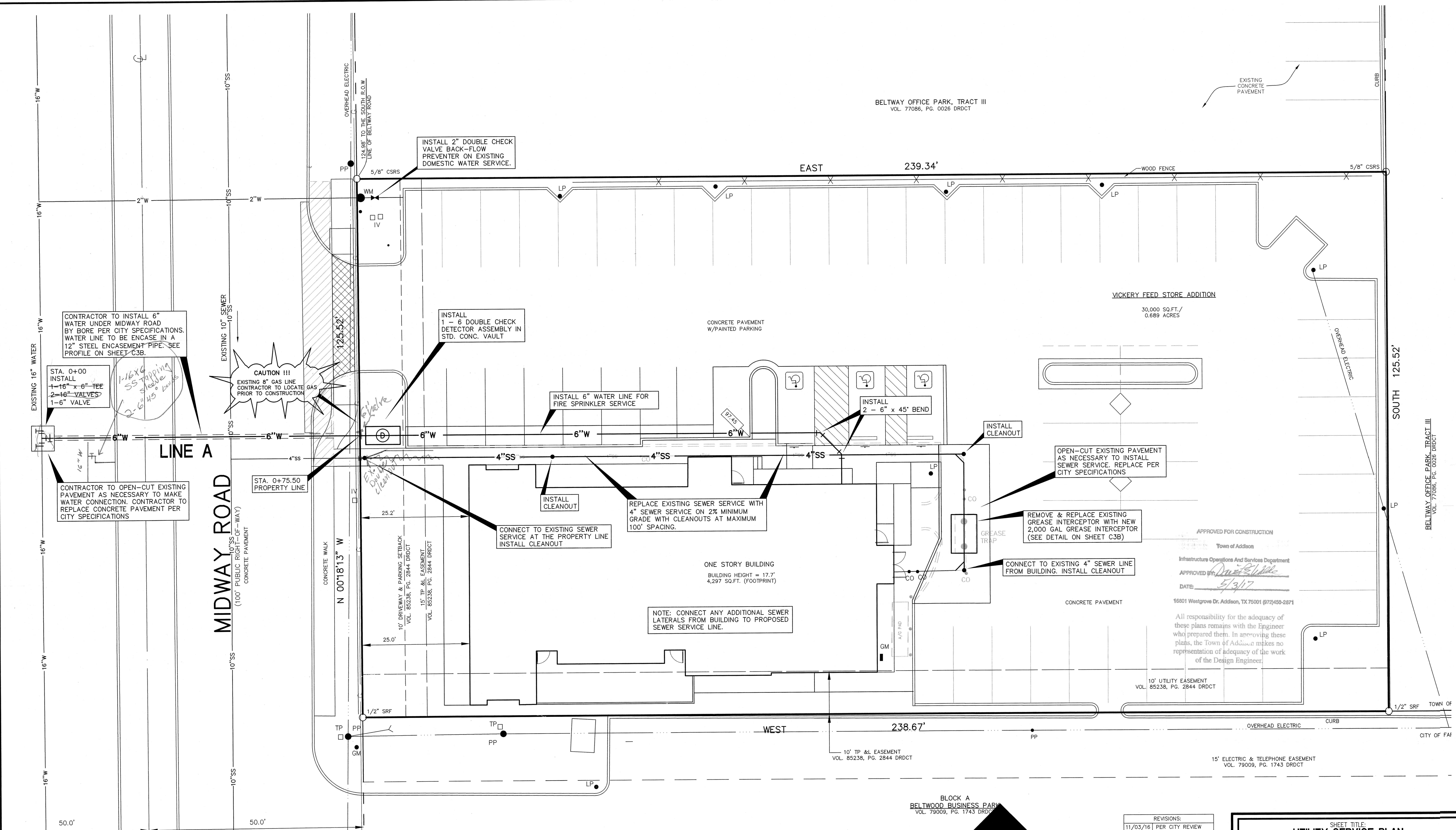
PREPARED BY:
JDJR ENGINEERS & CONSULTANTS, INC.
TSBPE REGISTRATION NUMBER F-8527

ENGINEERS • SURVEYORS • LAND PLANNERS
2500 Texas Drive Suite 100 Irving, Texas 75062
Tel 972-252-5357 Fax 972-252-8958

DATE: 10-10-16 DRAWN BY: JDJR SHEET NO.
SCALE: 1" = 10' CHECKED BY: JDJR **C2** OF 4

H:\JDJ\p\007\103\103-45-07\Drawings\103-45-07 Civil Plans\103-45-07 Midway DWG - 4/17/2017 11:40:19 AM DWG TO PDF.pcl

H:\JD\proj\2007\103-45-07\Drawings\14910 Midway\Civil\103-45-07 civil plans 2016 water to Midway.DWG, 4/17/2017 11:40:40 AM, DWG To PDF.p3



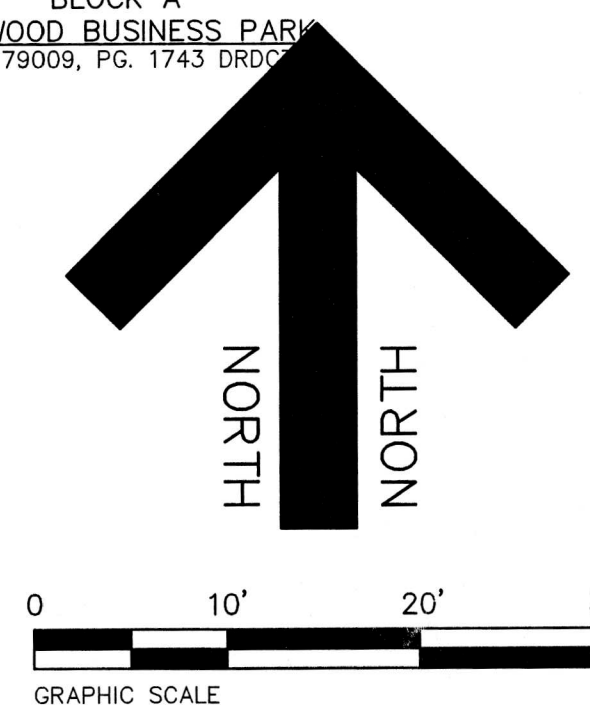
BELTWAY OFFICE PARK, TRACT III
VOL. 77086, PG. 0026 DRDCT

VICKERY FEED STORE ADDITION
30,000 SQ.FT./
0.689 ACRES

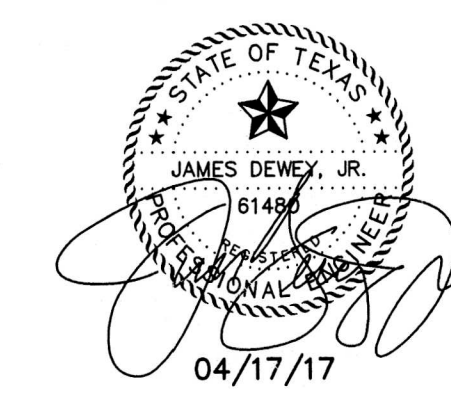
ONE STORY BUILDING
BUILDING HEIGHT = 17.7'
4,297 SQ.FT. (FOOTPRINT)

APPROVED FOR CONSTRUCTION
Town of Addison
Infrastructure Operations And Services Department
APPROVED BY: *[Signature]*
DATE: 3/3/17
16801 Westgrove Dr, Addison, TX 75001 (972)450-2871
All responsibility for the adequacy of these plans remains with the Engineer who prepared them. In approving these plans, the Town of Addison makes no representation of adequacy of the work of the Design Engineer.

- NOTES:
1. ALL CONSTRUCTION SHALL BE DONE IN STRICT CONFORMANCE TO THESE PLANS AND ALL APPLICABLE MUNICIPAL CODES AND STANDARDS.
 2. THE CONTRACTOR SHALL MAKE APPLICATION FOR SERVICES, OBTAIN ALL PERMITS, AND PAY ALL CHARGES, FEES, AND CONNECTION COSTS REQUIRED FOR EACH UTILITY SERVICE. (THESE COSTS AND FEES SHALL NOT BE INCLUDED IN THE BASE BID).
 3. SEE PLUMBING AND ELECTRICAL PLANS FOR EXACT LOCATIONS AND DETAILS OF SERVICES INTO BUILDING.
 4. CONTRACTOR TO VERIFY THE LOCATION AND DEPTH OF ALL EXISTING UTILITIES PRIOR TO CONSTRUCTION.



REVISIONS:	
11/03/16	PER CITY REVIEW
11/14/16	PER CITY REVIEW
12/08/16	OFF-SITE WATER
12/23/16	PER CITY REVIEW
1/30/17	PER OWNER
3/16/17	FIRE LINE LOCATION
4/17/17	PER CITY REVIEW



SHEET TITLE:
UTILITY SERVICE PLAN
ZOLI'S NY PIZZA
14910 MIDWAY ROAD
VICKERY FEED STORE ADDITION
ADDISON, TEXAS

PREPARED BY:
JDJR ENGINEERS & CONSULTANTS, INC.
TSBPE REGISTRATION NUMBER F-8527

ENGINEERS • SURVEYORS • LAND PLANNERS
2500 Texas Drive Suite 100 Irving, Texas 75082
Tel 972-252-5357 Fax 972-252-8858

DATE: 10-10-16 DRAWN BY: JDJR SHEET NO.
SCALE: 1" = 10' CHECKED BY: JDJR **C3A** OF **4**

CLASS "B+" EMBEDMENT

TRENCH WIDTH
16" + O.D. MIN.
24" + O.D. MAX.

SELECT MATERIAL

PLACE LAYER OF GEOTEXTILE MATERIAL OVER CRUSHED STONE

CRUSHED STONE (GRADE 4)

CRUSHED STONE SHALL BE 3/4", PASSING # 4 SIEVE

TYPICAL P.V.C. WATER MAIN EMBEDMENT

DATE: AUGUST, 2010 REV DATE: SHEET: SD-W01

HORIZONTAL THRUST BLOCK AT PIPE BEND

DATE: AUGUST, 2010 REV DATE: SHEET: SD-W04

HORIZONTAL THRUST BLOCK DIMENSIONS & QUANTITIES

I.D. (IN.)	G (FT.)	THRUST (TONS)	EARTH			ROCK			I.D. (IN.)	G (FT.)	THRUST (TONS)	EARTH			ROCK		
			A (FT.)	B (FT.)	VOL. (C.Y.)	A (FT.)	B (FT.)	VOL. (C.Y.)				A (FT.)	B (FT.)	VOL. (C.Y.)	A (FT.)	B (FT.)	VOL. (C.Y.)
4,6.8	0.4	1.0	1.5	1.5	0.1	1.5	1.5	0.1	4,6.8	0.8	2.0	1.5	1.5	0.1	1.0	1.0	0.1
10,12	0.6	1.5	2.0	2.0	0.1	2.0	2.0	0.1	10,12	1.1	4.4	2.0	2.5	0.3	1.5	1.5	0.1
16,18	0.8	2.2	3.0	3.0	0.1	3.0	3.0	0.1	16,18	1.6	9.9	3.0	3.5	0.6	2.0	2.5	0.3
20	0.9	3.0	4.0	4.0	0.1	4.0	4.0	0.1	20	2.0	13.2	4.0	4.5	0.9	3.0	3.5	0.4
24	1.1	4.0	5.0	5.0	0.1	5.0	5.0	0.1	24	2.4	17.7	4.0	4.5	1.0	3.0	3.5	0.5
30	1.4	5.5	7.0	7.0	0.1	7.0	7.0	0.1	30	3.0	24.0	5.0	5.5	1.3	4.0	4.0	0.8
36	1.7	7.5	9.0	9.0	0.1	9.0	9.0	0.1	36	3.6	32.4	6.0	6.5	1.7	5.0	5.0	1.3
42	2.0	10.0	12.0	12.0	0.1	12.0	12.0	0.1	42	4.2	42.0	7.0	7.5	2.1	6.0	6.0	1.8
48	2.4	13.0	16.0	16.0	0.1	16.0	16.0	0.1	48	4.8	55.2	8.0	8.5	2.5	7.0	7.0	2.1
54	2.8	16.0	20.0	20.0	0.1	20.0	20.0	0.1	54	5.4	72.0	9.0	9.5	3.0	8.0	8.0	2.4
60	3.2	20.0	25.0	25.0	0.1	25.0	25.0	0.1	60	6.0	90.0	10.0	10.5	3.5	9.0	9.0	2.7
66	3.6	24.0	30.0	30.0	0.1	30.0	30.0	0.1	66	6.6	108.0	11.0	11.5	4.0	10.0	10.0	3.0
72	4.0	28.0	35.0	35.0	0.1	35.0	35.0	0.1	72	7.2	126.0	12.0	12.5	4.5	11.0	11.0	3.3
78	4.4	32.0	40.0	40.0	0.1	40.0	40.0	0.1	78	7.8	144.0	13.0	13.5	5.0	12.0	12.0	3.6
84	4.8	36.0	45.0	45.0	0.1	45.0	45.0	0.1	84	8.4	162.0	14.0	14.5	5.5	13.0	13.0	3.9
90	5.2	40.0	50.0	50.0	0.1	50.0	50.0	0.1	90	9.0	180.0	15.0	15.5	6.0	14.0	14.0	4.2
96	5.6	44.0	55.0	55.0	0.1	55.0	55.0	0.1	96	9.6	198.0	16.0	16.5	6.5	15.0	15.0	4.5

DATE: AUGUST, 2010 REV DATE: SHEET: SD-W05

HORIZONTAL THRUST BLOCK DIMENSIONS & QUANTITIES

I.D. (IN.)	G (FT.)	THRUST (TONS)	EARTH			ROCK			I.D. (IN.)	G (FT.)	THRUST (TONS)	EARTH			ROCK		
			A (FT.)	B (FT.)	VOL. (C.Y.)	A (FT.)	B (FT.)	VOL. (C.Y.)				A (FT.)	B (FT.)	VOL. (C.Y.)	A (FT.)	B (FT.)	VOL. (C.Y.)
4,6.8	0.4	1.0	1.5	1.5	0.1	1.5	1.5	0.1	4,6.8	0.8	2.0	1.5	1.5	0.1	1.0	1.0	0.1
10,12	0.6	1.5	2.0	2.0	0.1	2.0	2.0	0.1	10,12	1.1	4.4	2.0	2.5	0.3	1.5	1.5	0.1
16,18	0.8	2.2	3.0	3.0	0.1	3.0	3.0	0.1	16,18	1.6	9.9	3.0	3.5	0.6	2.0	2.5	0.3
20	0.9	3.0	4.0	4.0	0.1	4.0	4.0	0.1	20	2.0	13.2	4.0	4.5	0.9	3.0	3.5	0.4
24	1.1	4.0	5.0	5.0	0.1	5.0	5.0	0.1	24	2.4	17.7	4.0	4.5	1.0	3.0	3.5	0.5
30	1.4	5.5	7.0	7.0	0.1	7.0	7.0	0.1	30	3.0	24.0	5.0	5.5	1.3	4.0	4.0	0.8
36	1.7	7.5	9.0	9.0	0.1	9.0	9.0	0.1	36	3.6	32.4	6.0	6.5	1.7	5.0	5.0	1.3
42	2.0	10.0	12.0	12.0	0.1	12.0	12.0	0.1	42	4.2	42.0	7.0	7.5	2.1	6.0	6.0	1.8
48	2.4	13.0	16.0	16.0	0.1	16.0	16.0	0.1	48	4.8	55.2	8.0	8.5	2.5	7.0	7.0	2.1
54	2.8	16.0	20.0	20.0	0.1	20.0	20.0	0.1	54	5.4	72.0	9.0	9.5	3.0	8.0	8.0	2.4
60	3.2	20.0	25.0	25.0	0.1	25.0	25.0	0.1	60	6.0	90.0	10.0	10.5	3.5	9.0	9.0	2.7
66	3.6	24.0	30.0	30.0	0.1	30.0	30.0	0.1	66	6.6	108.0	11.0	11.5	4.0	10.0	10.0	3.0
72	4.0	28.0	35.0	35.0	0.1	35.0	35.0	0.1	72	7.2	126.0	12.0	12.5	4.5	11.0	11.0	3.3
78	4.4	32.0	40.0	40.0	0.1	40.0	40.0	0.1	78	7.8	144.0	13.0	13.5	5.0	12.0	12.0	3.6
84	4.8	36.0	45.0	45.0	0.1	45.0	45.0	0.1	84	8.4	162.0	14.0	14.5	5.5	13.0	13.0	3.9
90	5.2	40.0	50.0	50.0	0.1	50.0	50.0	0.1	90	9.0	180.0	15.0	15.5	6.0	14.0	14.0	4.2
96	5.6	44.0	55.0	55.0	0.1	55.0	55.0	0.1	96	9.6	198.0	16.0	16.5	6.5	15.0	15.0	4.5

DATE: AUGUST, 2010 REV DATE: SHEET: SD-W06

PLAN OF PLUG THRUST BLOCK

PLAN OF TEE THRUST BLOCK

TABLES OF DIMENSIONS AND QUANTITIES

I.D. (IN.)	THRUST (TONS)	G (FT.)	EARTH			ROCK		
			A (FT.)	B (FT.)	VOL. (C.Y.)	A (FT.)	B (FT.)	VOL. (C.Y.)
4,6.8	0.4	1.0	1.5	1.5	0.1	1.5	1.5	0.1
10,12	0.6	1.5	2.0	2.0	0.1	2.0	2.0	0.1
16,18	0.8	2.2	3.0	3.0	0.1	3.0	3.0	0.1
20	0.9	3.0	4.0	4.0	0.1	4.0	4.0	0.1
24	1.1	4.0	5.0	5.0	0.1	5.0	5.0	0.1
30	1.4	5.5	7.0	7.0	0.1	7.0	7.0	0.1
36	1.7	7.5	9.0	9.0	0.1	9.0	9.0	0.1
42	2.0	10.0	12.0	12.0	0.1	12.0	12.0	0.1
48	2.4	13.0	16.0	16.0	0.1	16.0	16.0	0.1

DATE: AUGUST, 2010 REV DATE: SHEET: SD-W07

ELEVATION "B-B"

SECTION "A-A"

VERTICAL THRUST BLOCK

DATE: AUGUST, 2010 REV DATE: SHEET: SD-W08

TYPICAL VALVE SETTING & BOX

DATE: AUGUST, 2010 REV DATE: SHEET: SD-W09

REVISIONS:

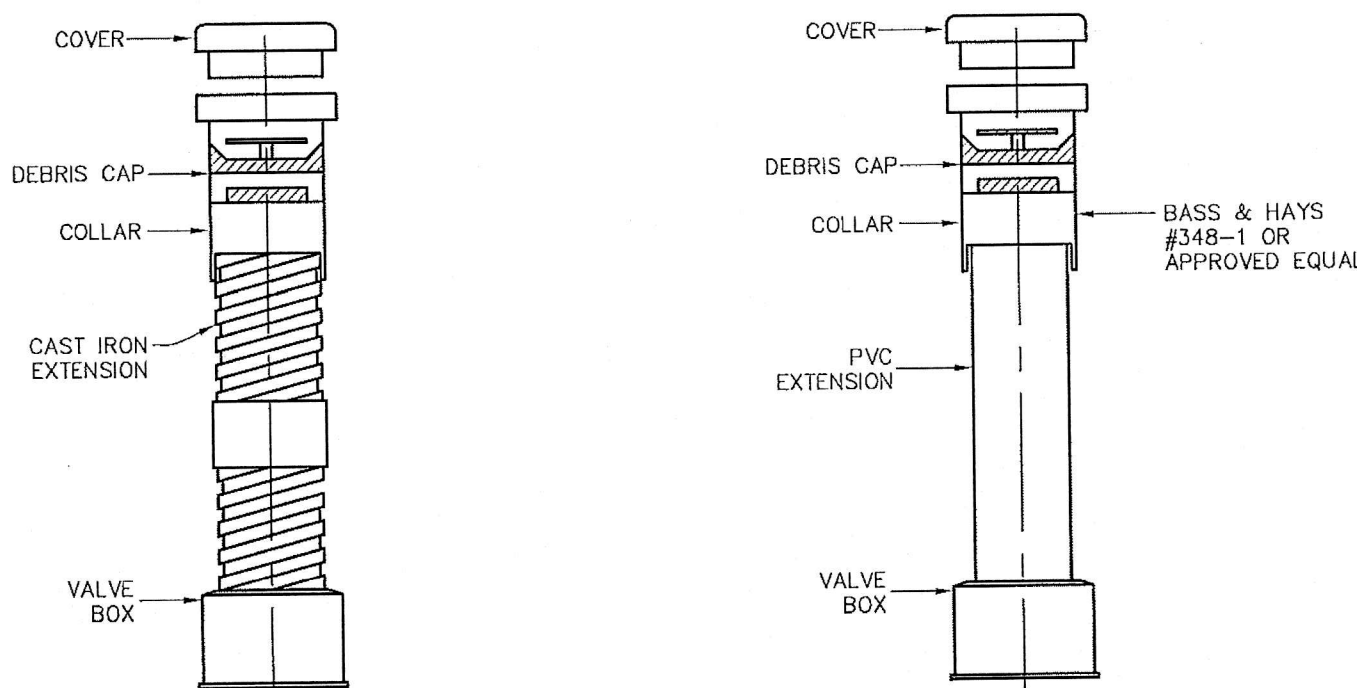
CITY OF ADDISON WATER DETAILS

ZOLI'S NY PIZZA
14910 MIDWAY ROAD
VICKERY FEED STORE ADDITION
ADDISON, TEXAS

PREPARED BY: **JDJR ENGINEERS & CONSULTANTS, INC.**
TSBPE REGISTRATION NUMBER F-8527

ENGINEERS • SURVEYORS • LAND PLANNERS
2500 Texas Drive Suite 100 Irving, Texas 75082
Tel 972-252-5357 Fax 972-252-8858

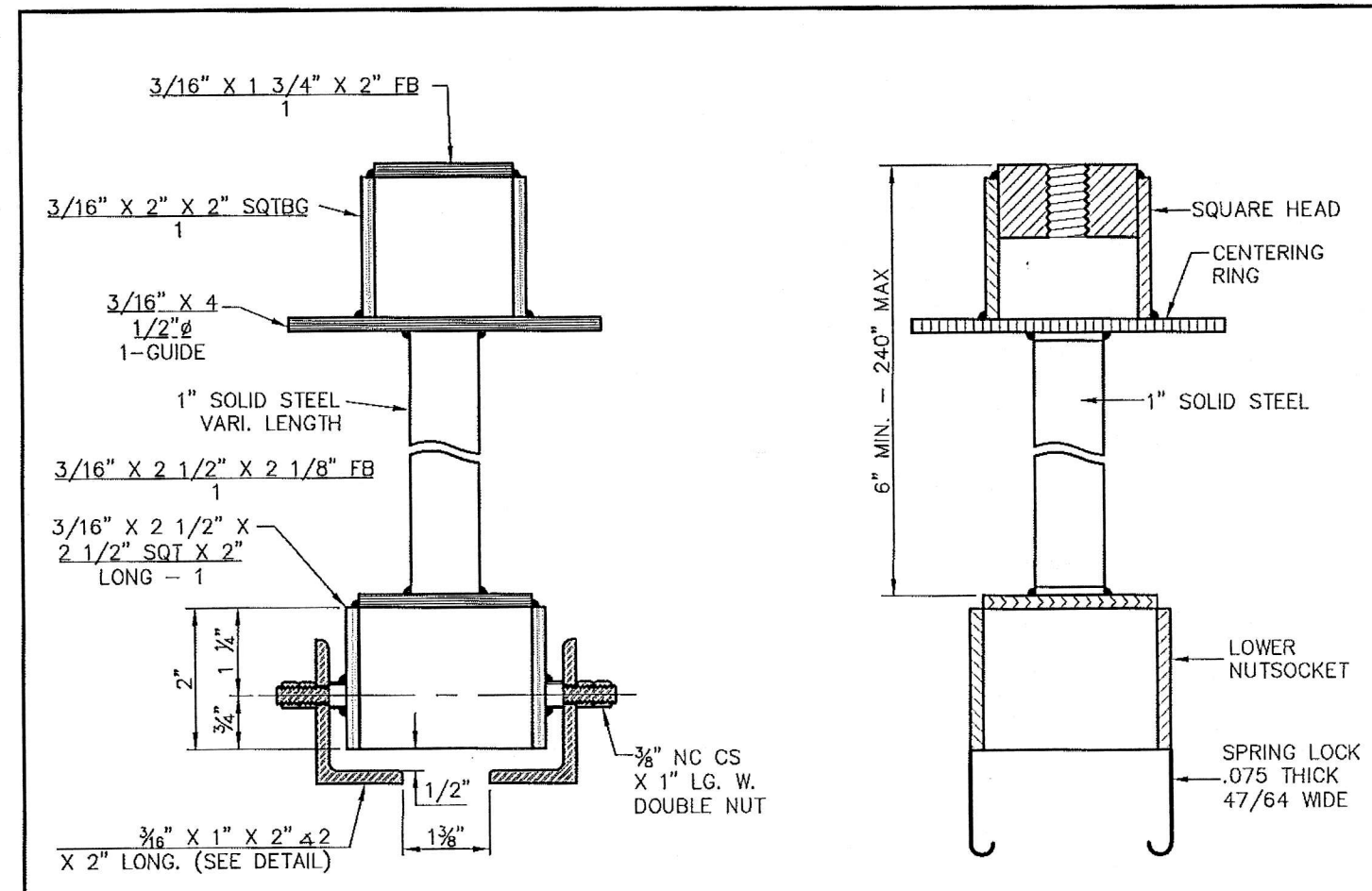
DATE: 10-10-16 DRAWN BY: JDJR SHEET NO. **C4A** OF **4**



FOR BURY HEIGHT 5' OR LESS FOR BURY HEIGHT GREATER THAN 5'

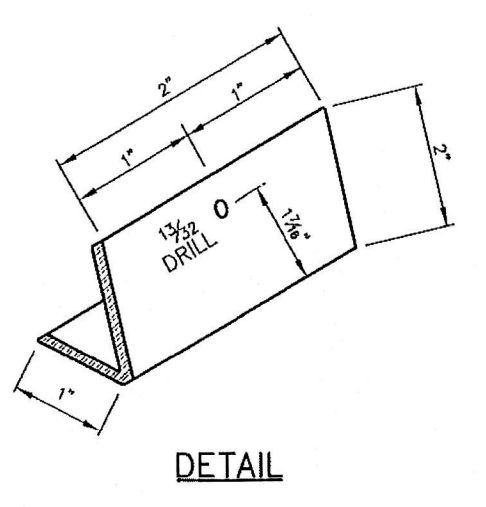
NOTE
 1. ALL CAST IRON FITTINGS SHALL BE DOMESTIC. (MADE IN U.S.A.)
 2. VALVE BOXES SHALL BE PROVIDED FOR BURIED VALVES. THESE BOXES SHALL BE THREE (3) PIECE SREW TYPE CAST IRON OF THE EXTENSION TYPE AND SHALL BE: BASS & HAYS THREE (3) PIECE ADJUSTABLE SREW TYPE, EAST JORDAN IRON WORKS B550 W/ 6800 LID, MUELLER NO. H-10350 OR APPROVED EQUAL. THE THREE (3) PIECES SHALL CONSIST OF THE TOP SECTION, BOTTOM SECTION AND COVER.

 PUBLIC WORKS DEPARTMENT	VALVE BOX WITH EXTENSION	STANDARD CONSTRUCTION DETAILS WATER		
		DATE: AUGUST, 2010	REV DATE: -	SHEET: SD-W10



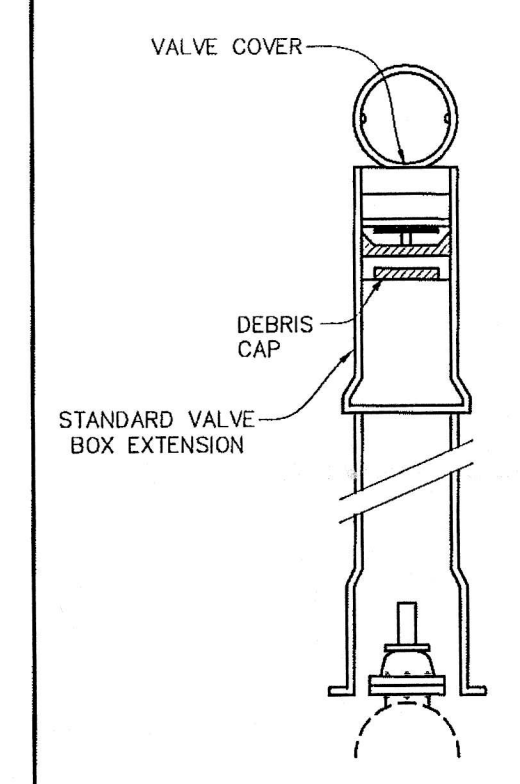
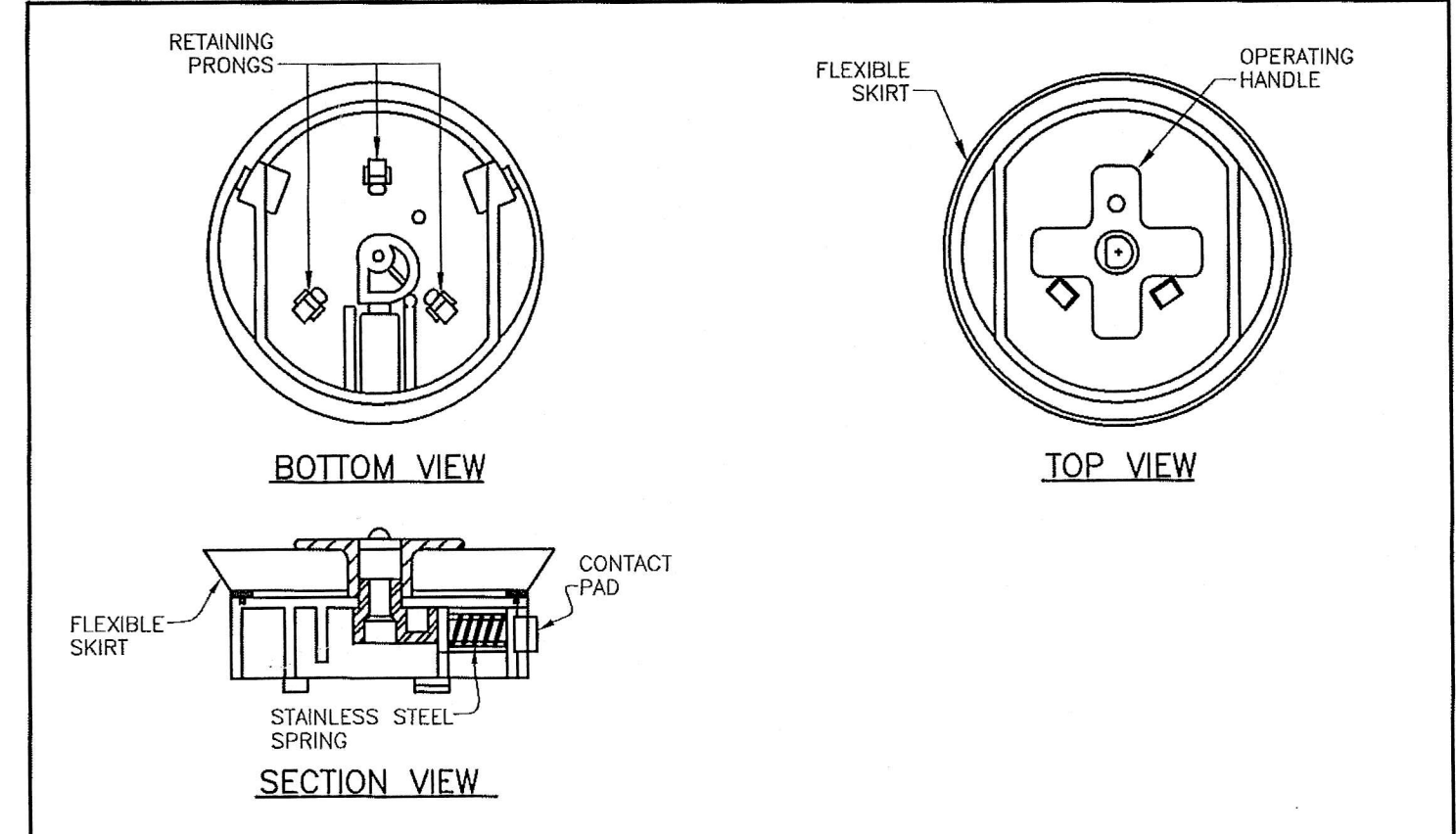
NOTE: TO BE USED ON ALL VALVES DEEPER THAN 5'-0".

TYPE - B VALVE EXTENSION SPRING LOCK VALVE EXTENSION



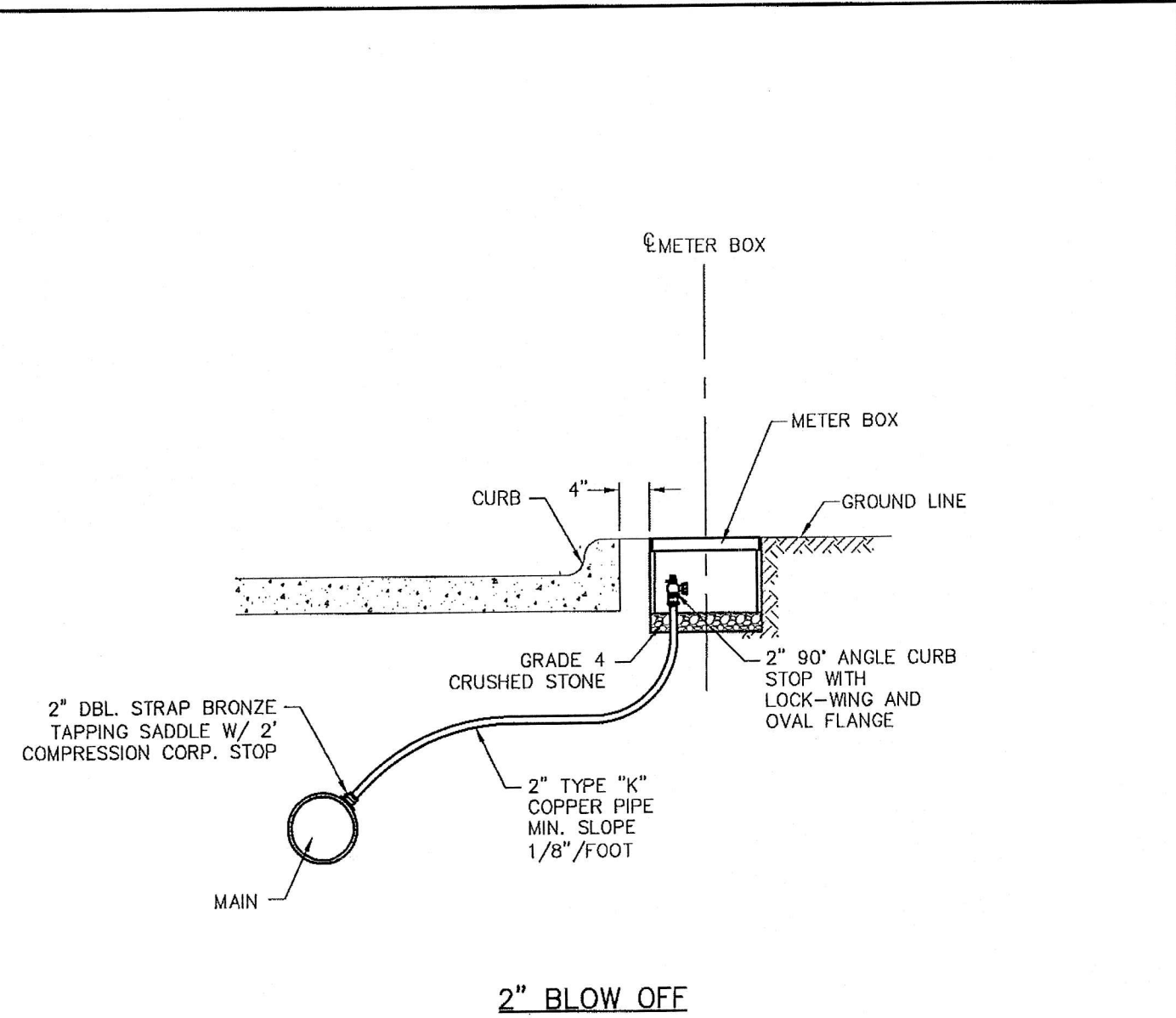
DETAIL

 PUBLIC WORKS DEPARTMENT	VALVE EXTENSION	STANDARD CONSTRUCTION DETAILS WATER		
		DATE: AUGUST, 2010	REV DATE: -	SHEET: SD-W11



NOTES
 1. DEBRIS CAP SHALL BE INSTALLED AS CLOSE AS POSSIBLE UNDER THE CAST IRON COVER WITHOUT INTERFERING WITH COVER OPERATION.
 2. FLEXIBLE SKIRT OF THE DEBRIS CAP SHALL BE TRIMMED TO PROVIDE A SMOOTH CONTACT WITH THE INTERIOR DIAMETER OF THE PIPE.
 3. THE DEBRIS CAP SHALL BE MANUFACTURED BY SW SERVICES, INC., PHOENIX, ARIZONA MODEL NO. DC 457 WITH LOCKING BRACKET MODEL NO. DC44 AND BARREL LOCK.
 4. THE CAP SHALL BE CONSTRUCTED TO ALLOW THE DEVICE TO BE SECURED BY A LOCK. THE LOCK (PAD, BARREL, ETC.) SHALL BE SUPPLIED BY THE TOWN OF ADDISON.

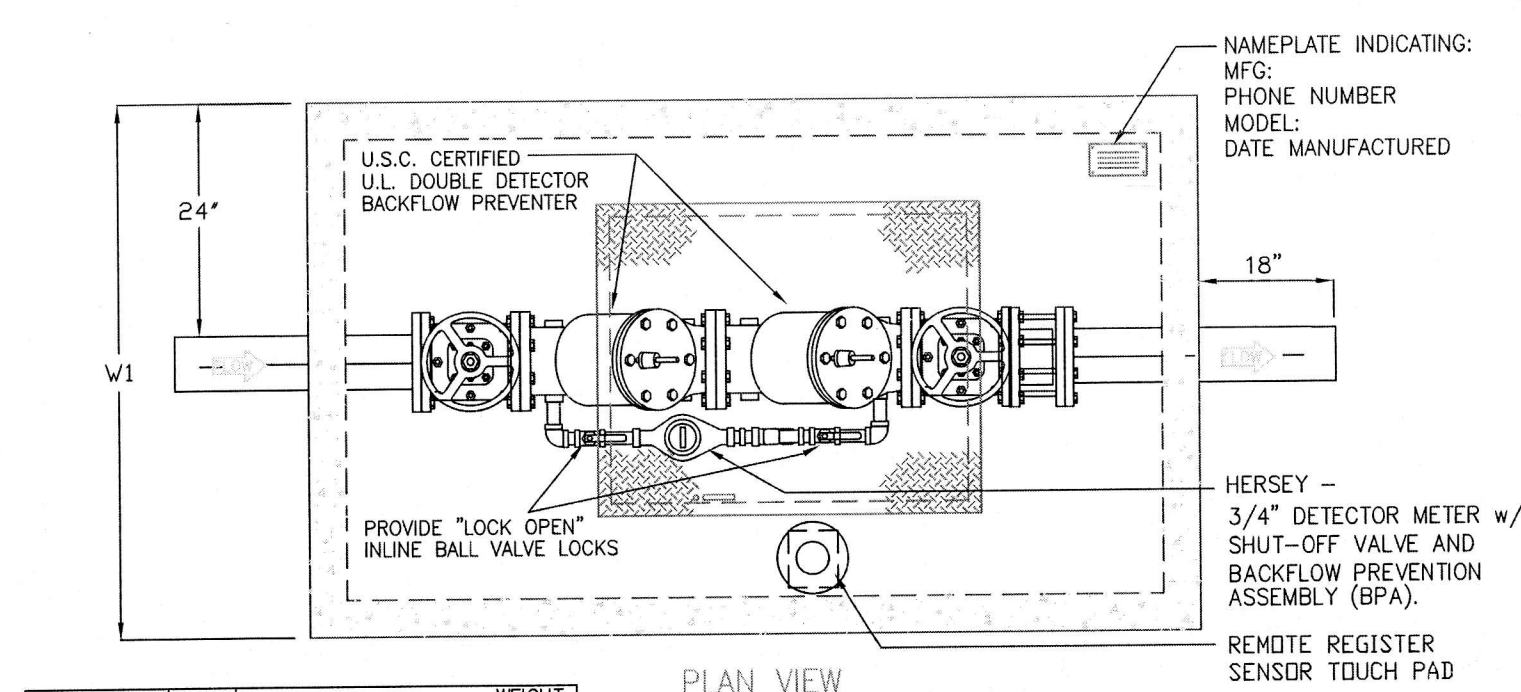
 PUBLIC WORKS DEPARTMENT	DEBRIS CAP	STANDARD CONSTRUCTION DETAILS WATER		
		DATE: AUGUST, 2010	REV DATE: -	SHEET: SD-W12



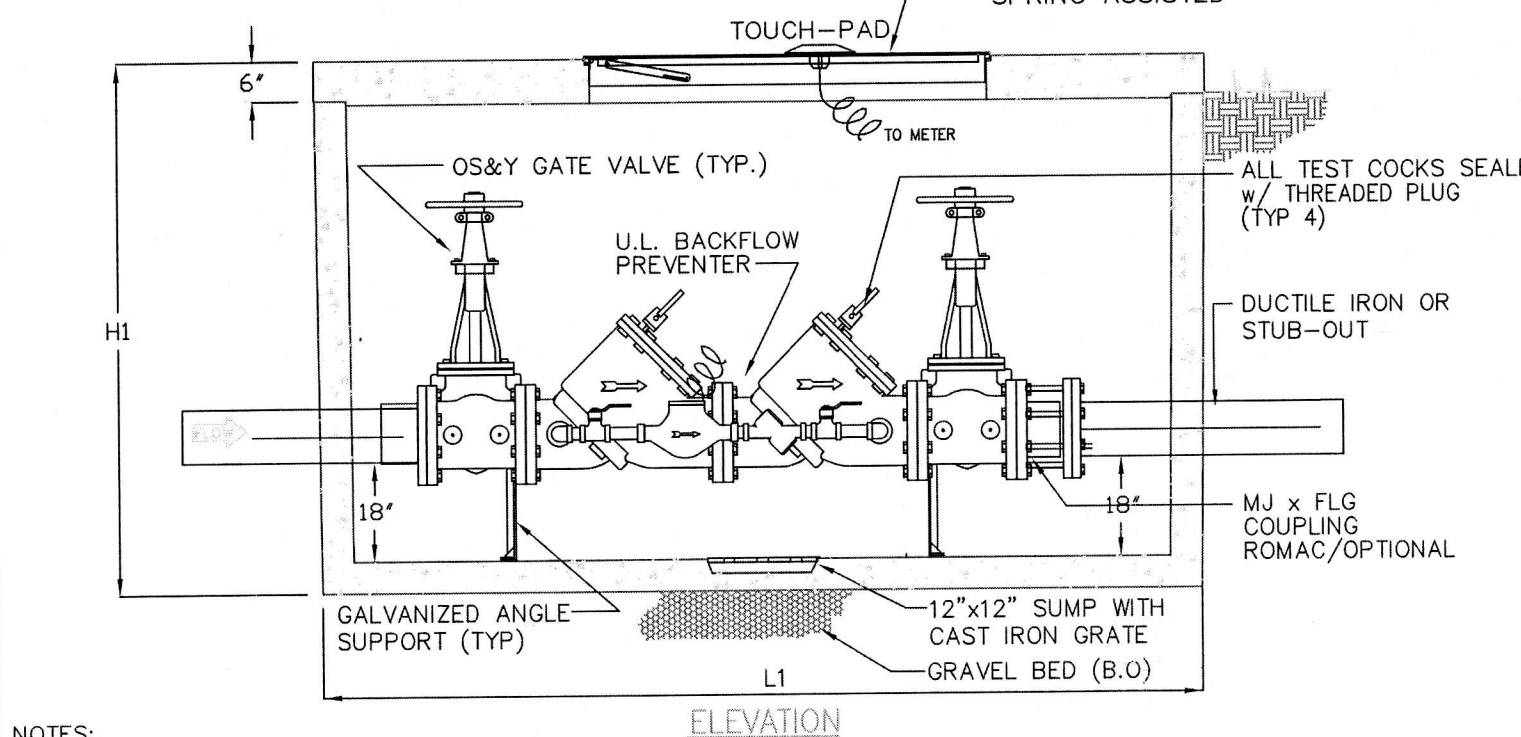
2" BLOW OFF

Type "K" Copper Service Pipe.	Double Strap Bronze Service Saddle with C.C. Threads	Galvanized Meter Box With Iron Ring & Cover
2 Inch	2 Inch	28 inches 20 inches 18 inches 20 lbs. 127 lbs.
		Min. Dia. Covers & Rings Min. Ht. Min. Can Weight Min. Total Weight

 PUBLIC WORKS DEPARTMENT	2" BLOW OFF WITH METER BOX	STANDARD CONSTRUCTION DETAILS WATER		
		DATE: AUGUST, 2010	REV DATE: -	SHEET: SD-W15

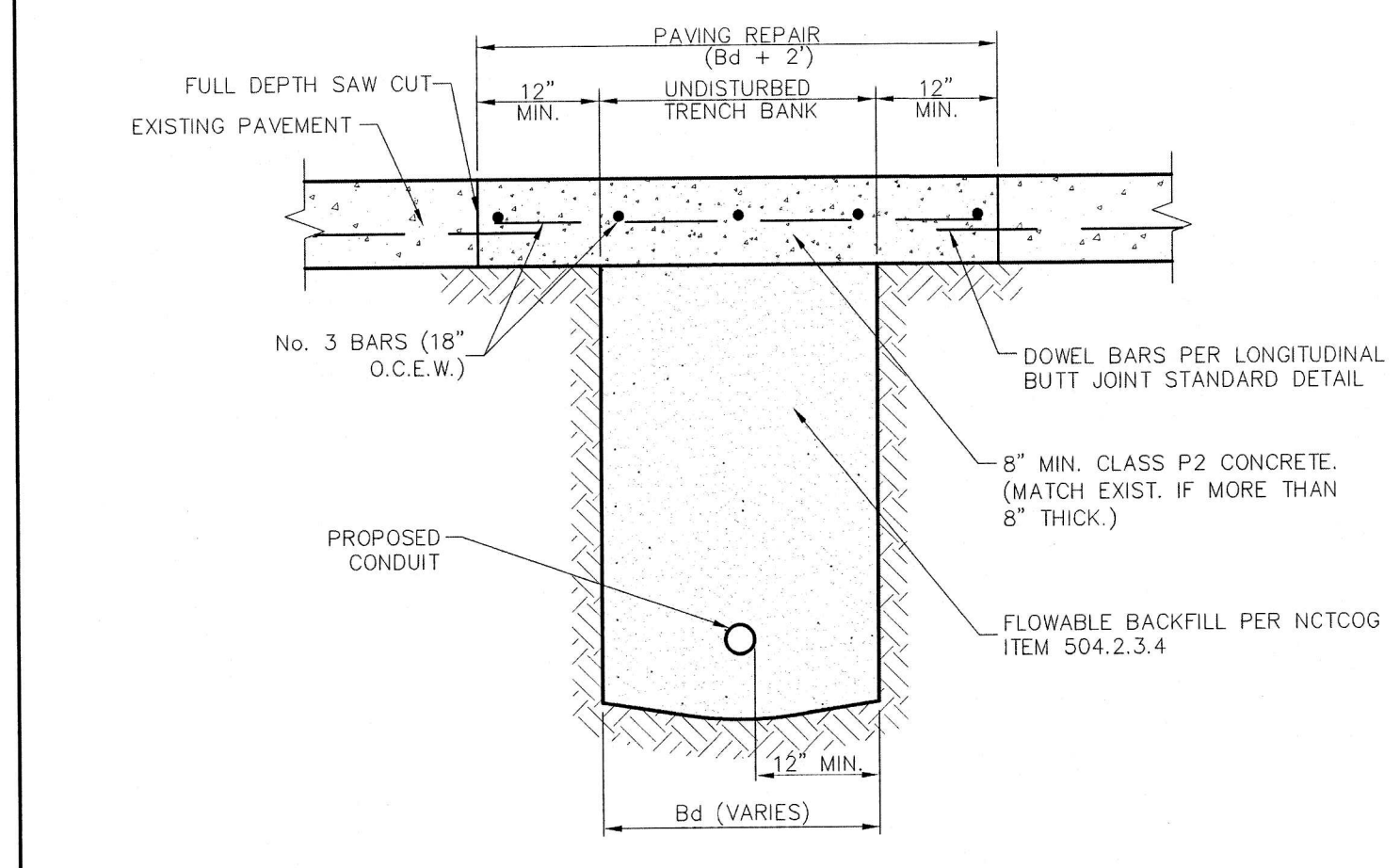


MODEL	SIZE	L1	W1	H1	WEIGHT LBS
DDBP-AD4	4"	7'-10"	4'-4"	6'-0"	9,000
DDBP-AD6	6"	7'-10"	4'-4"	6'-0"	9,200
DDBP-AD8	8"	8'-8"	5'-0"	6'-0"	15,000
DDBP-AD10	10"	9'-0"	6'-0"	7'-0"	18,000



NOTES:
 1. ALL CONCRETE SHALL BE CLASS 1 CONCRETE WITH DESIGN STRENGTH OF 4500 PSI AT 28 DAYS. UNITS ARE OF MONOLITHIC CONSTRUCTION AT FLOOR AND FIRST STAGE OF WALL WITH SECTIONAL RISER TO REQUIRED DEPTH.
 2. ALL REINFORCEMENT SHALL BE GRADE 60 REINFORCED STEEL REBAR CONFORMING TO ASTM A615 ON REQUIRED CENTERS OR EQUAL.
 3. ALL HATCHWAYS SHALL BE 1/2" ALUMINUM DIAMOND PLATE COVER, WITH 1/2" EXTRUDED ALUMINUM FRAME. HATCH TO BE FURNISHED WITH 316 STAINLESS STEEL SNAP LOCK AND HINGES.
 4. THE BACKFLOW ASSEMBLY SHALL BE FACTORY ASSEMBLED IN VAULT AND HYDROSTATICALLY TESTED PRIOR TO DELIVERY. PIPE, VALVES AND FITTINGS OF THE ASSEMBLY SHALL BE IN ACCORDANCE WITH THE TOWN OF ADDISON WATER SYSTEM REQUIREMENTS.

 INFRASTRUCTURE DEPARTMENT	DOUBLE CHECK DETECTOR ASSEMBLY	STANDARD CONSTRUCTION DETAILS WATER		
		DATE: AUGUST, 2009	LAST REV DATE: MAY 2016	SHEET: SD-W22



NOTES:
 1. REPAIRS SHALL EXTEND TO 1' BEYOND EACH SIDE OF TRENCH (Bd).
 2. REINFORCEMENT CHAIRS OR APPROVED DEVICE SHALL BE USED.
 3. REPAIRS SHALL MATCH EXISTING GRADE.

 PUBLIC WORKS DEPARTMENT	UTILITY INSTALLATION BENEATH CONCRETE ROAD SURFACE	STANDARD CONSTRUCTION DETAILS UTILITIES TRENCHLINE & STREET RESTORATION		
		DATE: AUGUST, 2010	REV DATE: -	SHEET: SD-U01

REVISIONS:	
11/14/16	PER CITY REVIEW
12/08/16	PVMT REPAIR DTL

SHEET TITLE:
CITY OF ADDISON WATER DETAILS
 ZOLI'S NY PIZZA
 14910 MIDWAY ROAD
 VICKERY FEED STORE ADDITION
 ADDISON, TEXAS

PREPARED BY:
JDJR ENGINEERS & CONSULTANTS, INC.
 TSBPB REGISTRATION NUMBER F-8527

ENGINEERS • SURVEYORS • LAND PLANNERS
 2500 Texas Drive Suite 100 Irving, Texas 75082
 Tel 972-252-5357 Fax 972-252-8958

DATE: 10-10-16 DRAWN BY: JDJR SHEET NO.
 SCALE: 1" = 10' CHECKED BY: JDJR **C4B** of **4**