

TABLE EC1

INLET OPENING OF ROCK BAGS	MINIMUM NUMBER OF ROCK BAGS	
	TOP	FRONT
5'	2	3
10'	3	4
15'	3	4
20'	4	4

NOTES:
 1. A SECTION OF FILTER FABRIC SHALL BE REMOVED AS SHOWN ON THIS DETAIL TO PROVIDE A 2" MINIMUM CLEAR OPENING. FABRIC MUST BE RECLOSED TO WIRE MACHING WITH CLIPS OR HOG WIRE AT THIS LOCATION.
 2. INSECTIONS SHALL BE MADE BY THE CONTRACTOR AND ACCUMULATION MUST BE REMOVED WHEN DEPTH REACHES 2".
 3. INLET PROTECTORS SHALL BE REMOVED AS SOON AS THE SURFACE OF SEWERMENT IS STABILIZED.

FIGURE 3.7 STANDARD CONSTRUCTION DETAIL - HOG WIRE WEIR CURB INLET PROTECTION (2 OF 2)
N.T.S.

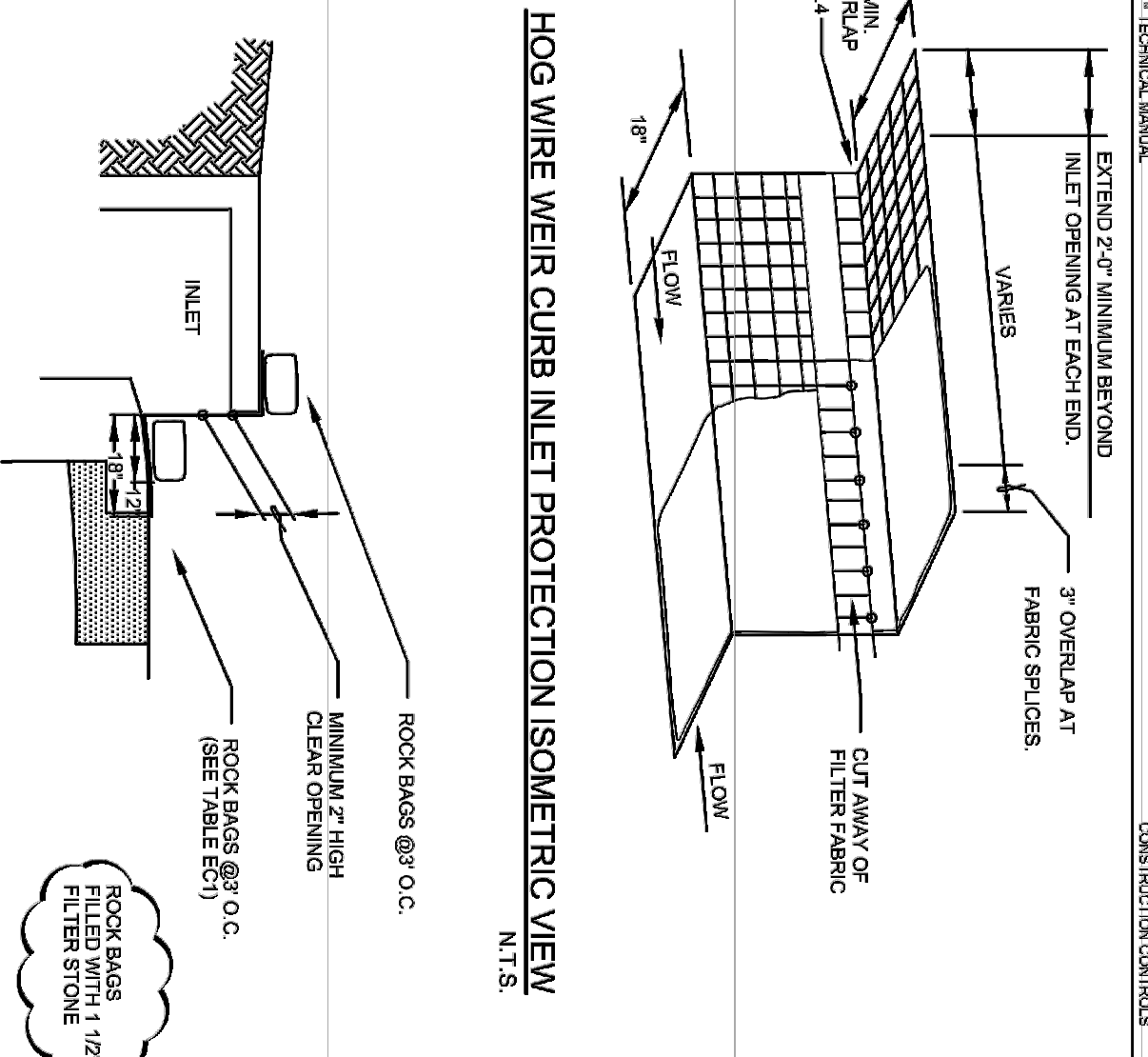
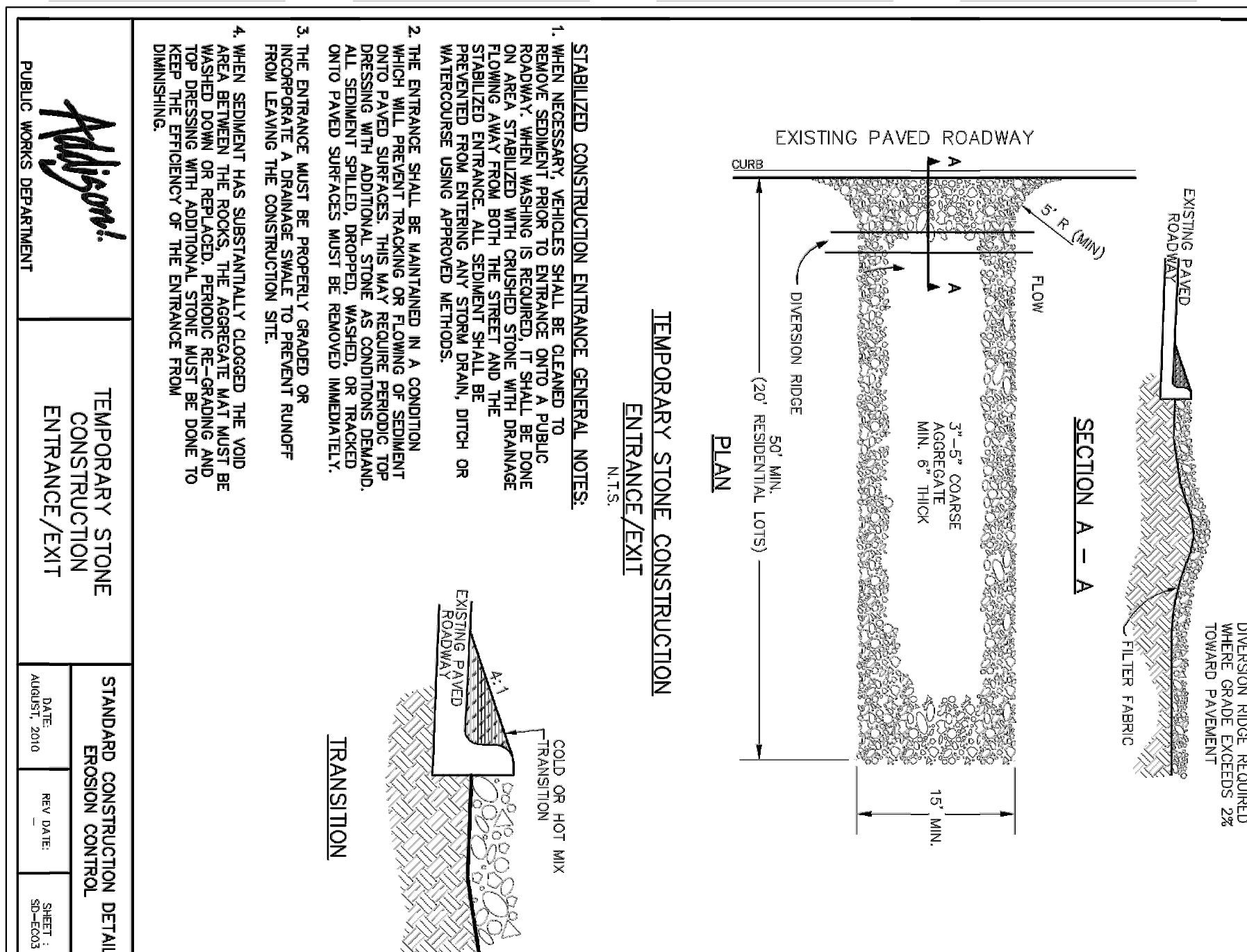
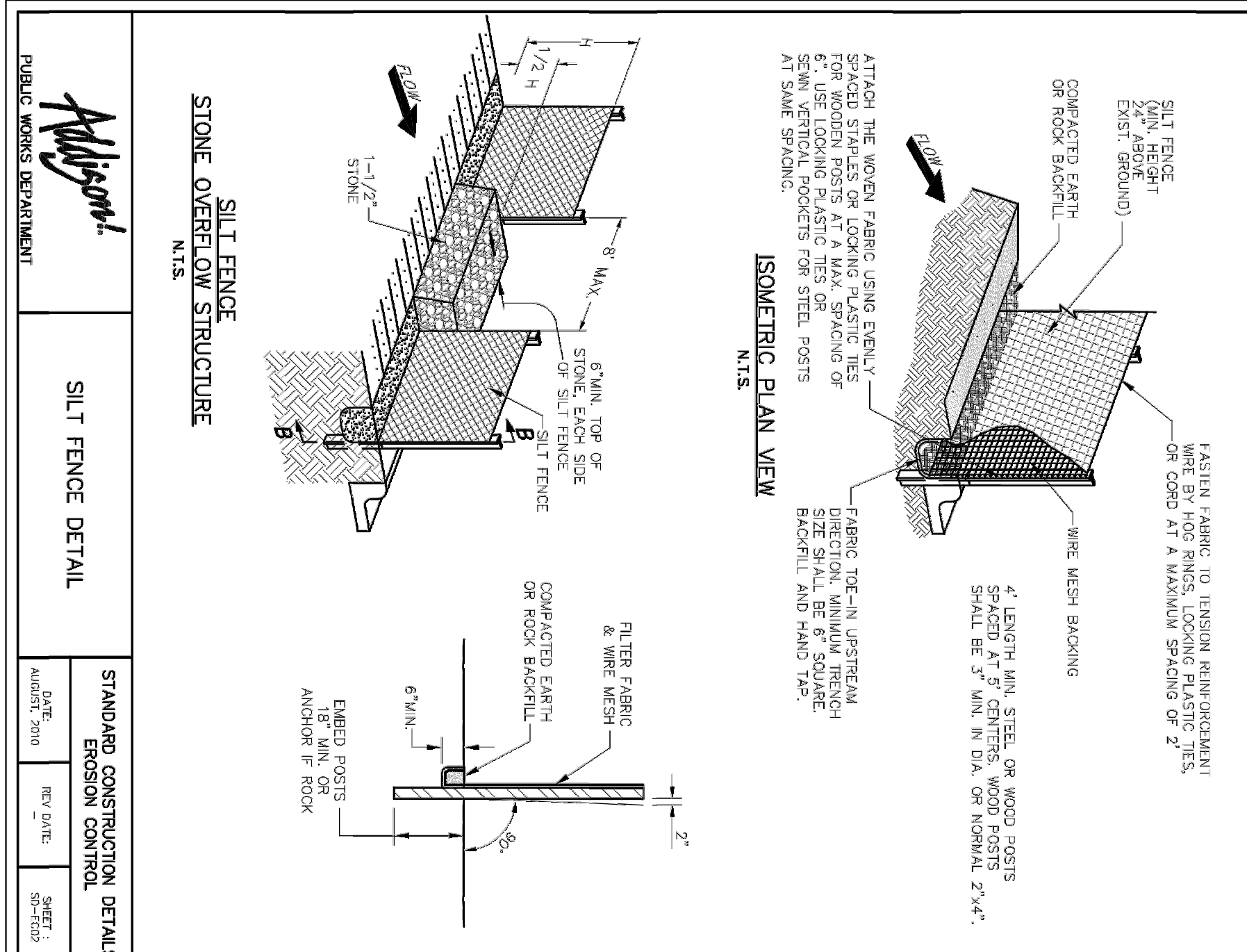


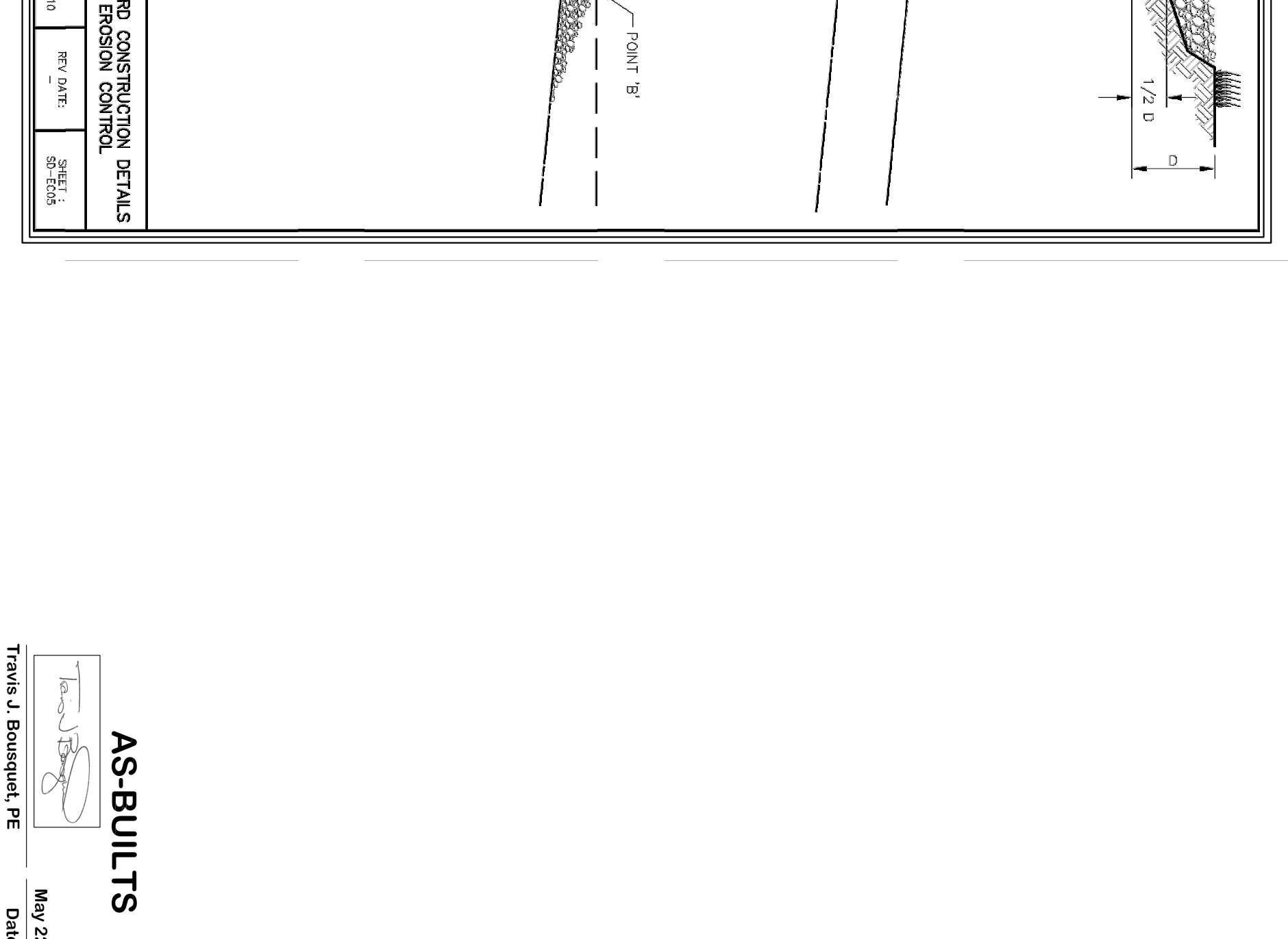
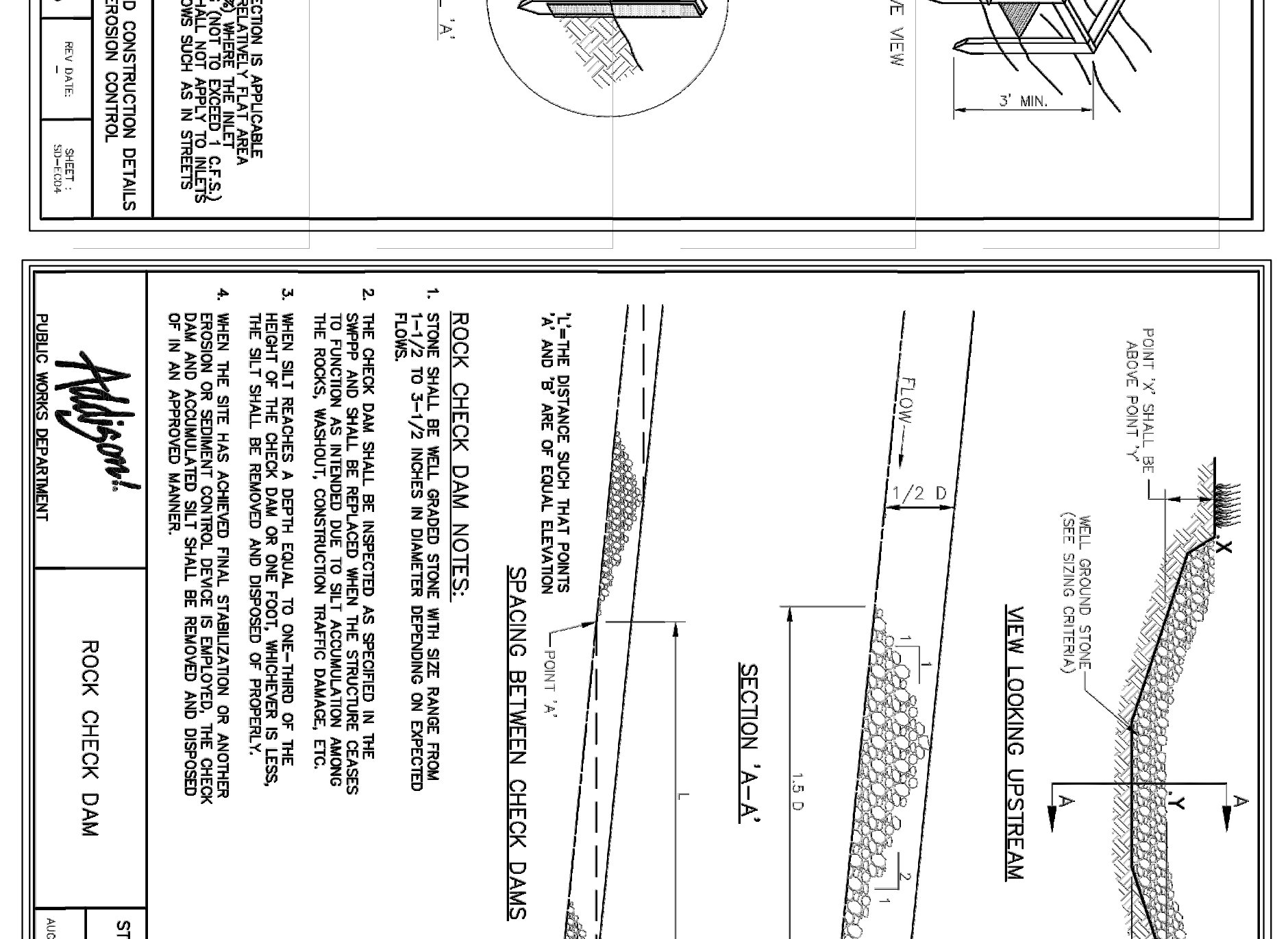
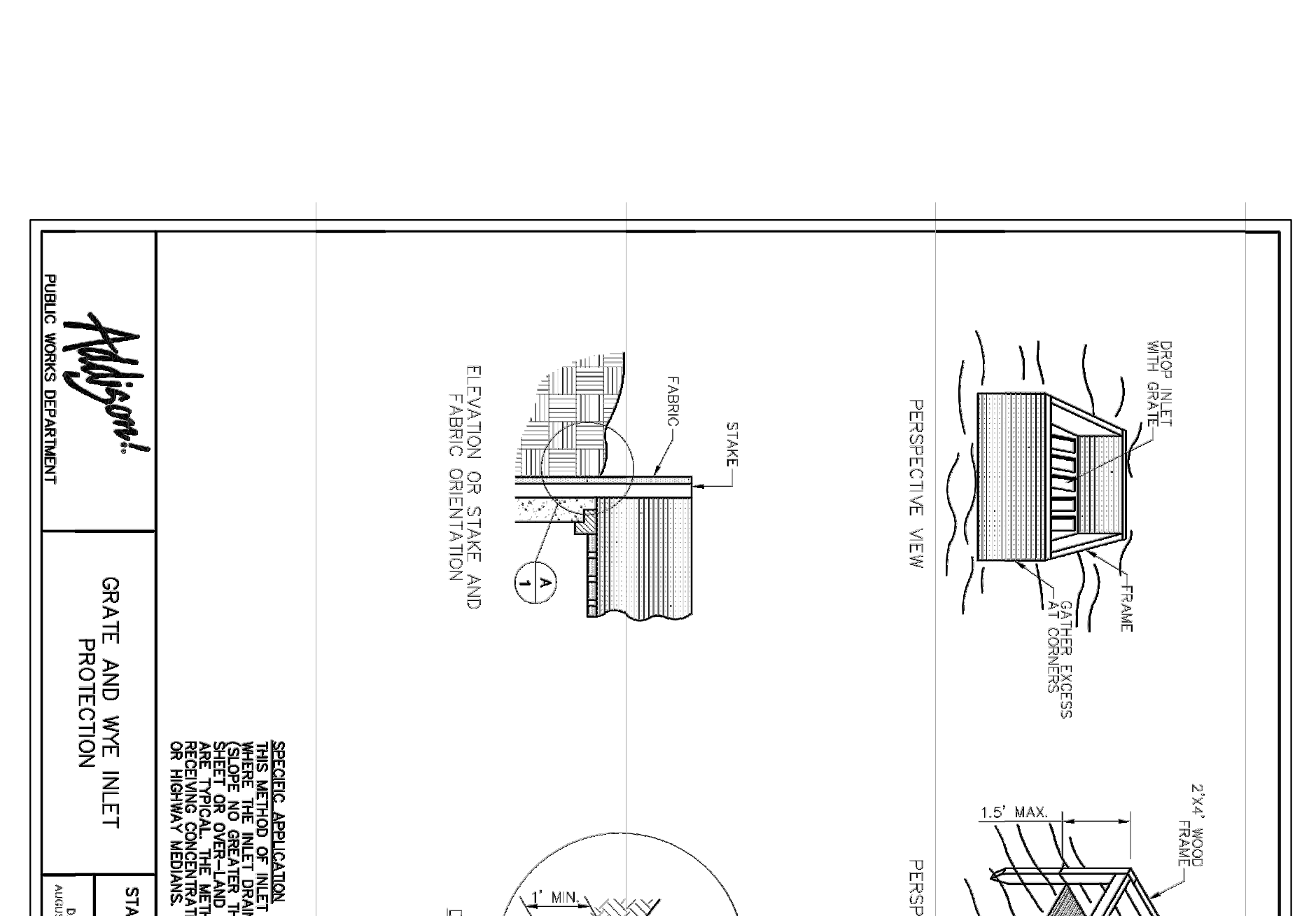
FIGURE 3.7 STANDARD CONSTRUCTION DETAIL - HOG WIRE WEIR CURB INLET PROTECTION (1 OF 2)
N.T.S.

- EROSION CONTROL PLAN NOTES**
- ALL OPERATORS AND/OR CONTRACTORS SHALL BE ADVISED BY THE EPC AND COMPLIANCE OF THE TEXAS COMMISSION ON ENVIRONMENTAL QUALITY (TCEQ) OF THE GENERAL PERMIT NO. 10R 18000 ISSUED AND DATED MARCH 5, 2003.
 - THE NOTICE OF INTENT (NOI), AS REQUIRED BY THE GENERAL PERMIT, MUST BE PROPERLY DISPLAYED ON SITE AT ALL TIMES BY EACH OPERATOR.
 - ALL RELEASES OF THE REPORTABLE QUANTITIES OF HAZARDOUS SUBSTANCES SHALL BE REPORTED IMMEDIATELY TO THE FACILITY OPERATOR, EPA AND TCEQ.
 - QUALIFIED OPERATOR PERSONNEL MUST INSPECT THE SITE AT LEAST EVERY 14 DAYS AND WITHIN 24 HOURS OF A STORM EVENT OF 0.5 INCHES OR GREATER. AS AN ALTERNATIVE, AN INSPECTION CAN BE CONDUCTED IMMEDIATELY FOLLOWING THE STORM EVENT. INSPECTIONS SHOULD BE CONDUCTED USING THE METHOD TO USE MUST BE DECIDED BEFORE WORK BEGINS AND MUST BE FOLLOWED THROUGHOUT THE PROJECT.
 - MODIFICATIONS TO THE STORM WATER POLLUTION PREVENTION PLAN SHALL BE IMPLEMENTED AND BE IN-PLACE WITHIN A SEVEN CALENDAR DAY PERIOD.
 - IF ANY CONTRACTOR SEES A VIOLATION BY AN OPERATOR OR ANOTHER CONTRACTOR, THAT OPERATOR OR CONTRACTOR IN VIOLATION SHALL BE NOTIFIED AS WELL AS THE FACILITY OPERATOR.
 - EROSION CONTROL, SILT FENCE CONTROL, SHALL BE INSTALLED PRIOR TO GRADING.
 - ACCUMULATED SILT DEPOSITS SHALL BE REMOVED FROM SILT FENCES AND HAY BALE DIMS WHEN SILT DEPTH REACHES THREE INCHES OR 25%.
 - THE CONTRACTOR SHALL ADD OR DELETE EROSION PROTECTION AT THE REQUEST AND DIRECTION OF THE OPERATOR OR TOWN.
 - AFTER INSTALLATION OF PAVEMENT, FINAL LOT BOUNDING AND GENERAL CLEANUP, THE CONTRACTOR SHALL RESTORE GRASS AND VEGETATION AS SPECIFIED BY PERMITS 2025 AND SEEDING AS SPECIFIED BY SECTION 202.8 OF THE OCTOBER 2004 OR LATEST EDITION OF NOTICES STANDARD SPECIFICATION.
 - IT SHALL BE THE CONTRACTOR'S RESPONSIBILITY TO CONTROL AND LIMIT SILT AND SEDIMENT STACKING AND STORM RUNOFF SYSTEMS FROM EROSION DEPOSIT.
 - A DRAINAGE AREA MAP WILL BE INCLUDED WITH THE EROSION CONTROL PLAN.
 - CONSTRUCTION WASTE DISPOSAL CONTAINERS SHALL BE PROVIDED ON THE SITE FOR DISPOSAL OF EXCESS MATERIALS AND WASTE MATERIALS. THE CONTAINERS SHALL BE TIED TO LANDFILL BY THE CONTRACTOR.
 - ALL HAZARDOUS MATERIALS SHALL BE HANDLED AND DISPOSED OF BY THE CONTRACTOR IN ACCORDANCE WITH FEDERAL STATE AND LOCAL REGULATIONS.
- SILT FENCE NOTES**
- POSTS WHICH SUPPORT THE SILT FENCE SHALL BE INSTALLED AT A SLIGHT ANGLE TOWARD THE ANTICIPATED RUNOFF SOURCE. THE POST SHALL BE EMBEDDED AT A MINIMUM OF 18 INCHES.
 - THE TYPE OF SILT FENCE SHALL BE DETERMINED IN WITH A SCALE OF MECHANICAL PROTECTION, SO THAT THE FENCE CANNOT BE OVERCOME BY THE FORCE OF FLOW. THE FENCE SHALL BE INSTALLED ON THE UPDRILL SIDE TO PREVENT FLOW UNDER FENCE.
 - THE FENCE MUST BE LAID WITH THE GRADE AND HAS TO BE PROTECTED TO A MINIMUM OF THE SILT FENCE SHALL BE SECURELY FASTENED TO EACH SUPPORT POST OR TO WOODEN WIRE WHICH IS IN THE GROUND. THE FENCE SHALL BE FASTENED TO EACH SUPPORT POST OR TO WOODEN WIRE WHICH IS IN THE GROUND BY A MINIMUM OF TWO WEBS OR AFTER EACH RAINFALL. REPAIR OR REPLACEMENT SHALL BE REQUIRED AS NECESSARY.
 - SILT FENCE SHALL BE COMPLETELY STABILIZED SO AS NOT TO BLOCK OR INTERRUPT FLOW OF DRAINAGE.
 - SILT FENCE SHALL BE REMOVED WHEN THE SITE IS COMPLETELY STABILIZED SO AS NOT TO BLOCK OR INTERRUPT FLOW OF DRAINAGE.
 - DESIGN OF SILT FENCE SHALL BE APPROVED BY THE OPERATOR OR TOWN.



STANDARD CONSTRUCTION DETAILS

DATE:	REV. DATE:	SHEET:
AUGUST 2010		SP-7023



STANDARD CONSTRUCTION DETAILS

DATE:	REV. DATE:	SHEET:
AUGUST 2010		SP-7023

EROSION CONTROL DETAILS
RACETRAC
 Beltline/Marsh Business Park
 Lot 2, Block 1
 3.133 Ac. - Zoned: Light Retail
 Addison, Texas

RaceTrac
 RACETRAC PETROLEUM, INC.
 3225 CUMBERLAND BOULEVARD
 SUITE 100 ATLANTA, GA 30339
 (770) 431-7600

THESE PLANS ARE SUBJECT TO FEDERAL COPYRIGHT LAWS: ANY USE OF SAME WITHOUT THE EXPRESSED WRITTEN PERMISSION OF RACETRAC PETROLEUM, INC. IS PROHIBITED.

NO.	DESCRIPTION	DATE
8	As-Built to City	05/22/20
7	Modification to sidewalk along Arapaho	04/16/20
6	Additional Spot elevations to GC	11/07/19
5	REVISED PLANS TO TOWN	08/23/2019
4	TOWN SUBMITTAL	04/05/2019
3	TOWN SUBMITTAL	08/30/2018
2	TOWN SUBMITTAL	08/28/2018
1	TOWN SUBMITTAL	02/11/2018

AS-BUILTS

DATE: May 22, 20

DESIGNER: Travis J. Bousquet, PE

DRAWING NAME: EROSION CONTROL DETAILS

SCALE: 1"=30'

DATE: May 22, 20

DRAWN BY: TJB

SHEET NO. VERSION

ES-DE

VERSION

DATE: May 22, 20

SCALE: 1"=30'

DRAWN BY: TJB

SHEET NO. VERSION

ES-DE

VERSION

DATE: May 22, 20

DRAWN BY: TJB

SHEET NO. VERSION

ES-DE

VERSION

DATE: May 22, 20

DRAWN BY: TJB

SHEET NO. VERSION

ES-DE

VERSION

DATE: May 22, 20

DRAWN BY: TJB

SHEET NO. VERSION

ES-DE

VERSION

DATE: May 22, 20

DRAWN BY: TJB

SHEET NO. VERSION

ES-DE

VERSION

DATE: May 22, 20

DRAWN BY: TJB

SHEET NO. VERSION

ES-DE

VERSION

DATE: May 22, 20

DRAWN BY: TJB

SHEET NO. VERSION

ES-DE

VERSION

DATE: May 22, 20

DRAWN BY: TJB

SHEET NO. VERSION

ES-DE

VERSION

DATE: May 22, 20

DRAWN BY: TJB

SHEET NO. VERSION

ES-DE

VERSION

DATE: May 22, 20

DRAWN BY: TJB

SHEET NO. VERSION

ES-DE

VERSION

DATE: May 22, 20

DRAWN BY: TJB

SHEET NO. VERSION

ES-DE

VERSION

DATE: May 22, 20

DRAWN BY: TJB

SHEET NO. VERSION

ES-DE

VERSION

DATE: May 22, 20

DRAWN BY: TJB

SHEET NO. VERSION

ES-DE

VERSION

DATE: May 22, 20

DRAWN BY: TJB

SHEET NO. VERSION

ES-DE

VERSION

DATE: May 22, 20

DRAWN BY: TJB

SHEET NO. VERSION

ES-DE

VERSION

DATE: May 22, 20

DRAWN BY: TJB

SHEET NO. VERSION

ES-DE

VERSION

DATE: May 22, 20

DRAWN BY: TJB

SHEET NO. VERSION

ES-DE

VERSION

DATE: May 22, 20

DRAWN BY: TJB

SHEET NO. VERSION

ES-DE

VERSION

DATE: May 22, 20

DRAWN BY: TJB

SHEET NO. VERSION

ES-DE

VERSION

DATE: May 22, 20

DRAWN BY: TJB

SHEET NO. VERSION

ES-DE

VERSION

DATE: May 22, 20

DRAWN BY: TJB

SHEET NO. VERSION

ES-DE

VERSION

DATE: May 22, 20

DRAWN BY: TJB

SHEET NO. VERSION

ES-DE

VERSION

DATE: May 22, 20

DRAWN BY: TJB

SHEET NO. VERSION

ES-DE

VERSION

DATE: May 22, 20

DRAWN BY: TJB

SHEET NO. VERSION

ES-DE

VERSION

DATE: May 22, 20

DRAWN BY: TJB

SHEET NO. VERSION

ES-DE

VERSION

DATE: May 22, 20

DRAWN BY: TJB

SHEET NO. VERSION

ES-DE

VERSION

DATE: May 22, 20

DRAWN BY: TJB

SHEET NO. VERSION

ES-DE

VERSION

DATE: May 22, 20

DRAWN BY: TJB

SHEET NO. VERSION

ES-DE

VERSION

DATE: May 22, 20

DRAWN BY: TJB

SHEET NO. VERSION

ES-DE

VERSION

DATE: May 22, 20

DRAWN BY: TJB

SHEET NO. VERSION

ES-DE

VERSION

DATE: May 22, 20

DRAWN BY: TJB

SHEET NO. VERSION

ES-DE

VERSION

DATE: May 22, 20

DRAWN BY: TJB

SHEET NO. VERSION

ES-DE

VERSION

DATE: May 22, 20

DRAWN BY: TJB

SHEET NO. VERSION

ES-DE

VERSION

DATE: May 22, 20

DRAWN BY: TJB

SHEET NO. VERSION

ES-DE

VERSION

DATE: May 22, 20

DRAWN BY: TJB

SHEET NO. VERSION

ES-DE

VERSION

DATE: May 22, 20

DRAWN BY: TJB

SHEET NO. VERSION

ES-DE

VERSION

DATE: May 22, 20

DRAWN BY: TJB

SHEET NO. VERSION

ES-DE

VERSION

DATE: May 22, 20

DRAWN BY: TJB

SHEET NO. VERSION

ES-DE

VERSION

DATE: May 22, 20

DRAWN BY: TJB

SHEET NO. VERSION

ES-DE

VERSION

DATE: May 22, 20

DRAWN BY: TJB

SHEET NO. VERSION

ES-DE

VERSION

DATE: May 22, 20

DRAWN BY: TJB

SHEET NO. VERSION

ES-DE

VERSION

DATE: May 22, 20

DRAWN BY: TJB

SHEET NO. VERSION

ES-DE

VERSION

DATE: May 22, 20

DRAWN BY: TJB

SHEET NO. VERSION