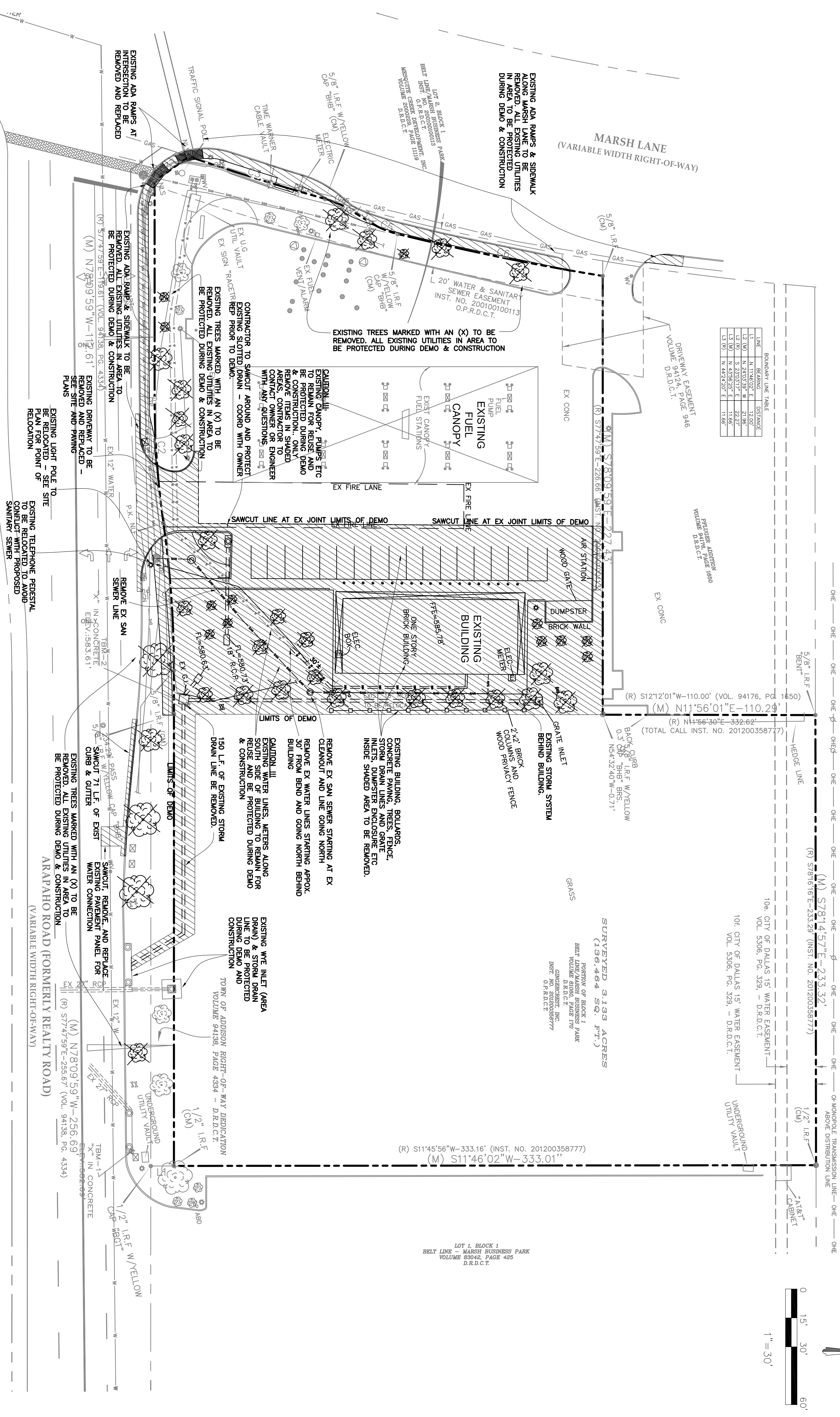


BENCHMARK CORNER TABLE

CORNER	BELTA 1	RAJOLIS	LENGTH
C1 (M)	8919.57'	942.00'	76.27'
C2 (M)	8919.57'	942.00'	76.27'
C3 (M)	8919.57'	942.00'	76.27'
C4 (M)	8919.57'	942.00'	76.27'
C5 (M)	8919.57'	942.00'	76.27'
C6 (M)	8919.57'	942.00'	76.27'
C7 (M)	8919.57'	942.00'	76.27'
C8 (M)	8919.57'	942.00'	76.27'
C9 (M)	8919.57'	942.00'	76.27'
C10 (M)	8919.57'	942.00'	76.27'

CORNER	BELTA 1	RAJOLIS	LENGTH
C1 (M)	8919.57'	942.00'	76.27'
C2 (M)	8919.57'	942.00'	76.27'
C3 (M)	8919.57'	942.00'	76.27'
C4 (M)	8919.57'	942.00'	76.27'
C5 (M)	8919.57'	942.00'	76.27'
C6 (M)	8919.57'	942.00'	76.27'
C7 (M)	8919.57'	942.00'	76.27'
C8 (M)	8919.57'	942.00'	76.27'
C9 (M)	8919.57'	942.00'	76.27'
C10 (M)	8919.57'	942.00'	76.27'

ST. LOUIS & SOUTHWESTERN RAILROAD
(100' RIGHT-OF-WAY)

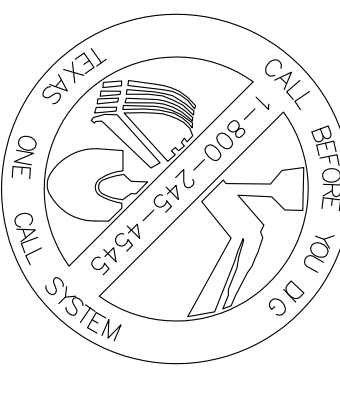


BENCH MARK

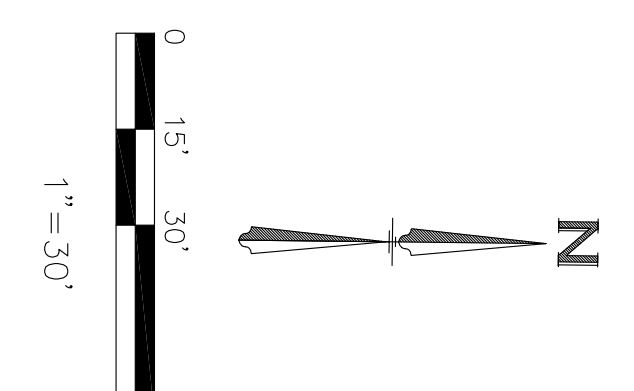
BENCHMARK NO. 1 - "X" CUT IN CONCRETE STORM INLET ON NORTH SIDE OF ARAPAHO ROAD APPROXIMATELY 575' EAST OF THE CENTERLINE INTERSECTION OF ARAPAHO ROAD AND MARSH LANE.
ELEV.: 582.69'

BENCHMARK NO. 2 - "X" CUT IN CONCRETE GRAPE INLET APPROXIMATELY 360' EAST OF THE CENTERLINE INTERSECTION OF ARAPAHO ROAD AND MARSH LANE.
ELEV.: 583.61'

ELEVATIONS ARE NAVD88 BASED ON GPS OBSERVATIONS.



TEXAS EXCAVATION
SAFETY SERVICES
1-800-344-8377



- GENERAL DEMOLITION NOTES:**
- IF NOT SHOWN ON THE DEMOLITION DRAWINGS, THE CONTRACTOR SHALL REMOVE ALL EXISTING MATERIALS AS NECESSARY TO COMPLETE ALL NEW WORK AS REQUIRED BY OTHER PORTIONS OF THE CONTRACT DOCUMENTS.
 - UNDISPOSED DEMOLITION MATERIALS SHALL BE FIRST GIVEN TO THE OWNER. ANY MATERIALS NOT RETURNED BY THE CONTRACTOR AT THE CONTRACTOR'S EXPENSE.
 - STATE AND FEDERAL REGULATIONS IN THE REMOVAL/DEMOLITION OF HAZARDOUS MATERIALS.
 - THE CONTRACTOR IS RESPONSIBLE TO VERIFY EXISTING UTILITIES PRIOR TO DEMOLITION. ALL REGISTRARS, PERMITS AND FEES REQUIRED TO REMOVE & PROPERLY DISPOSE OF ALL DEMOLITION MATERIALS.
 - DEMO CONTRACTOR IS RESPONSIBLE FOR OBTAINING APPROVALS AND DEMO CONTRACTOR IS REQUIRED TO VISIT SITE PRIOR TO BID AND NOTIFY ENGINEER OF ANY INCONSISTENCIES.
 - CONTRACTOR RESPONSIBLE TO COORDINATE AND ASSURE ANY FEES TO BE REMOVED & CAPPED.
 - REFER TO SURVEY FOR LIMITS AND BOUNDARY OF PROPERTY.
 - CONTRACTOR SHALL OBTAIN EXCAVATION PERMIT FROM CITY OF COMPTON CITY 48 HOURS PRIOR TO DEMOLITION AND EXCAVATION.

BELOW-GRADE CONSTRUCTION

DEMOLISH FOUNDATION WALLS AND OTHER BELOW-GRADE CONSTRUCTION, INCLUDING FOUNDATION WALLS AND FOOTINGS.

DAMAGES

PROMPTLY REPAIR DAMAGES TO ADJACENT FACILITIES CAUSED BY DEMOLITION OPERATIONS.

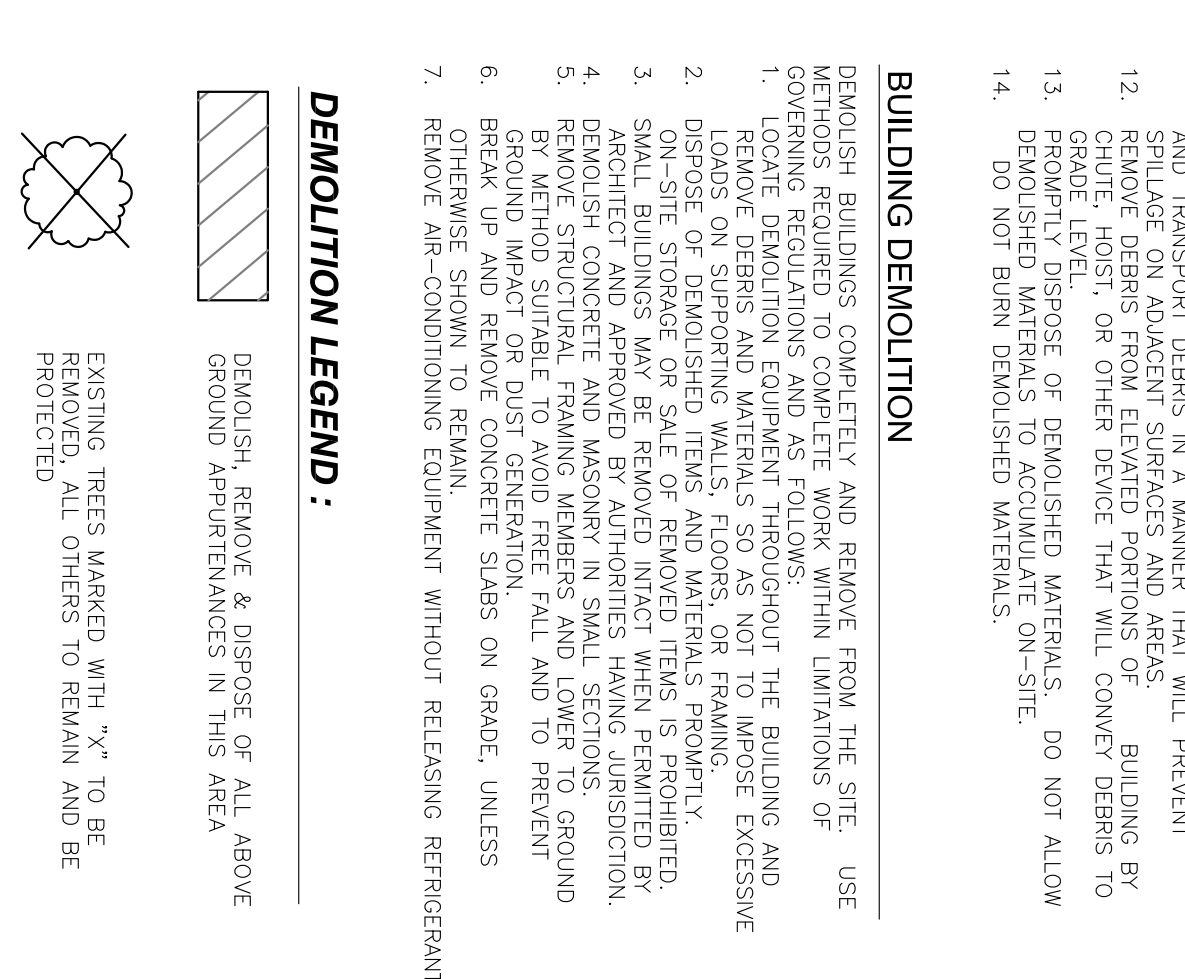
GENERAL DEMOLITION SPECIFICATION

- OWNER ASSUMES NO RESPONSIBILITY FOR ACTUAL CONDITION OF DEMOLITION.
- CONDITIONS EXISTING AT TIME OF INSPECTION FOR BIDDING PURPOSE WILL BE MAINTAINED BY OWNER AS FAR AS PRACTICAL.
- STORAGE OR SALE OF REMOVED ITEMS OR MATERIALS ON-SITE.
- MAINTAIN EXISTING UTILITIES INDICATED TO REMAIN IN SERVICE AND PROTECT THEM AGAINST DAMAGE DURING DEMOLITION OPERATIONS.
- DRY, PARGE, OR OTHERWISE REMOVE, COLLECT, AND DISPOSE OF HAZARDOUS MATERIALS BEFORE PROCEEDING WITH DEMOLITION OPERATIONS.
- EMPLOY A CERTIFIED, LICENSED EXTERMINATOR TO TREAT BUILDING AND TO CONTROL ROBBENTS AND VERMIN BEFORE AND DURING DEMOLITION OPERATIONS.
- CONDUCT DEMOLITION OPERATIONS AND REMOVE DEBRIS TO ENSURE MINIMUM INTERFERENCE WITH ROADS, STREETS, WALKS, AND OTHER ADJACENT OCCUPIED OR USED FACILITIES WITHOUT PERMISSION FROM OWNER AND AUTHORITIES HAVING JURISDICTION. PROVIDE ALTERNATE ROUTES AROUND CLOSED OR OBSTRUCTED TRAFFIC LANES.
- REMOVE DEBRIS FROM ELEVATED PORTIONS OF BUILDING BY GRADE LEVEL, OR OTHER DEVICE THAT WILL PREVENT SPILLAGE ON ADJACENT SURFACES AND AREAS.
- PROMPTLY DISPOSE OF DEMOLISHED MATERIALS. DO NOT ALLOW DEMOLISHED MATERIALS TO ACCUMULATE ON-SITE.
- DO NOT BURN DEMOLISHED MATERIALS.

BUILDING DEMOLITION

DEMOLISH BUILDINGS COMPLETELY AND REMOVE FROM THE SITE. USE METHODS REQUIRED TO COMPLETE WORK WITHIN LIMITATIONS OF GOVERNING REGULATIONS AND AS FOLLOWS:

- REMOVE DEBRIS AND MATERIALS SO AS NOT TO IMPROVE EXCESSIVE LOADS ON SUPPORTING WALLS, FLOORS, OR FRAMING.
- DISPOSE OF DEMOLISHED ITEMS AND MATERIALS PROPERLY.
- SMALL BUILDINGS MAY BE REMOVED IMPACT WHEN PERMITTED BY ARCHITECT AND APPROVED BY AUTHORITIES HAVING JURISDICTION.
- DEMOLISH CONCRETE AND MASONRY IN SMALL SECTIONS, GROUND BY METHOD SUITABLE TO AVOID FREE FALL AND TO PREVENT GROUND IMPACT OR DUST GENERATION.
- BREAK UP AND REMOVE CONCRETE SLABS ON GRADE, UNLESS OTHERWISE SHOWN TO REMAIN.
- REMOVE AIR-CONDITIONING EQUIPMENT WITHOUT RELEASING REFRIGERANT.



AS-BUILTS
Travis J. Bousquet, PE
May 22, 20

<p>Demolition Plan RACETRAC Beltline/Marsh Business Park Lot 2, Block 1 3.133 Ac. - Zoned: Light Retail Addison, Texas</p>	<p>RaceTrac RACETRAC PETROLEUM, INC. 3225 CUMBERLAND BOULEVARD SUITE 100 ATLANTA, GA 30339 (770) 431-7600</p>	<p>THESE PLANS ARE SUBJECT TO FEDERAL COPYRIGHT LAWS: ANY USE OF SAME WITHOUT THE EXPRESSED WRITTEN PERMISSION OF RACETRAC PETROLEUM, INC. IS PROHIBITED.</p>	<p>05/22/20</p>	<p>8 As-Builts to City 7 Modification to sidewalk along Arapaho 6 Additional Spot elevations to GC 5 REVISED PLANS TO TOWN 4 TOWN SUBMITTAL 3 TOWN SUBMITTAL 2 TOWN SUBMITTAL 1 TOWN SUBMITTAL</p>	<p>05/22/20 04/16/20 11/07/19 08/23/2019 04/05/2019 08/30/2018 08/28/2018 02/12/2018</p>	
	<p>DATE: May 22, 20 SCALE: 1"=30' DRAWN BY: TJB</p>	<p>DATE: May 22, 20 SCALE: 1"=30' DRAWN BY: TJB</p>	<p>SHEET NO. D-1 VERSION: -</p>	<p>INDEX</p>	<p>NO.</p>	<p>DATE</p>