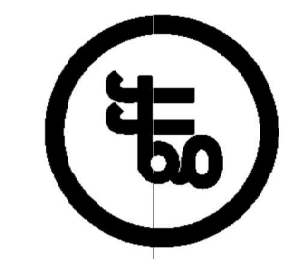


Good Fulton & Farrell Architects
 214.303.1500/744
 214.303.1512/Fax
 www.gff.com
 2808 Fairmount Street
 Suite 300
 Dallas, Texas 75201
 © Good Fulton & Farrell 2009



McInnish Engineering, PLLC
 Texas Firm Reg. # 1025218
 19661 FM 2222, Suite R-128
 Austin, TX 78790
 Austin: 512.870.8490
 Dallas: 214.613.0501

VILLAGE ON THE PARKWAY
 5100 BELT LINE ROAD
 Addison, Texas 75254

No.	Date	Item

REVISIONS

BBM
 Drawn
 BBM
 Checked
 BBM
 Approved

SITE PLAN - ELEC. & PLUMBING

Project No. 11013.03
 Date 05.25.12
 Last Revision

EP1.01

BELT LINE RD

NEED TO VERIFY THAT THE 30' POLES WILL CLEAR THE 7'6" CLEARANCE REQUIREMENTS PER NOTE 7 ON THE PLANS.

DALLAS NORTH TOLLWAY
 ACCESS ROAD

1022 AT&T 5,888 SF
 1022 SLEEP EXPERTS 4,358 SF
 1054 1,570 SF
 1056 KITCHEN 2,361 SF
 RETAIL/REST. 14,175 SF

1012 GROCERY 40,000 SF
 4,000 SF MEZZ

852
 BLDG 800 REST./RETAIL +16,700 SF (TENANT SCOPE)
 840
 832
 820

796

795

776

764

400

1 SITE PLAN - ELECTRICAL & PLUMBING
 SCALE: 1"=30'-0"

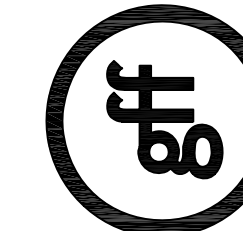
2 PARTIAL SITE PLAN - ELECTRICAL
 SCALE: 1"=30'-0"

- ELECTRICAL NOTES BY SYMBOL: (4)
- ROUTING OF MAIN ELECTRICAL UTILITY PRIMARY, 36" DEEP. COORDINATE REQUIREMENTS & EXACT LOCATION OF ELECTRICAL UTILITY WITH ONCOR CONTACT, CHARLES THOMAS, 817.355.7014, CHARLES.THOMAS@ONCOR.COM OR KAREN EASTMAN, COORDINATE ALL UTILITY REQUIREMENTS. PAY ALL FEES.
 - ROUTING OF MAIN TELEPHONE SERVICE, 24" DEEP. COORDINATE EXACT LOCATION OF TELEPHONE UTILITY WITH AT&T. CONTACT, CHAD COOPER, 972.234.7073 CD2825@ATT.COM. COORDINATE ALL REQUIREMENTS. PROVIDE (2) 4" CONDUIT TO EACH TELEPHONE SERVICE LOCATION.
 - ROUTING OF MAIN GAS SERVICE, 36" DEEP. COORDINATE EXACT LOCATION OF TELEPHONE UTILITY WITH ATMOS ENERGY, CONTACT, GARY DICKINSON, 972.360.4428 GARY.DICKINSON@ATMOSENERGY.COM. COORDINATE ALL REQUIREMENTS.
 - 480V, 3PH SECONDARY, UTILITY PAD MOUNTED TRANSFORMER. CLEARANCE IS SHOWN AS HATCHED.
 - 208V, 3PH SECONDARY, UTILITY COMPANY PAD MOUNTED TRANSFORMER. CLEARANCE IS SHOWN AS HATCHED.
 - PROVIDE POWER FOR INTERNALLY LIGHTED SIGN. VOLTAGE IS 277V, 1PH. ALLOWED WATTS FOR WEST & FAR EAST SIGNS IS 1500W ON #10 WIRE. IF ADDITIONAL WATTS ARE NEEDED, THEN PROVIDE #8 WIRE. COORDINATE REQUIREMENTS AND DISCONNECTING MEANS LOCATION WITH SIGN IN FIELD.
 - POLE MTD. LIGHT FIXTURE HEADS SHALL BE AT LEAST 7'-6" FROM OVERHEAD ELECTRICAL LINES "OHE".
 - INTERNAL FIXTURES - SEE PLAN.
 - PROVIDE (1)11/4" & (1)3/4" TO EACH FUTURE, TENANT PROVIDED ELECTRIC CAR CHARGING STATIONS. STUB UP & CAP INSIDE BLDG. (AT 10' AFF) FOR FUTURE CONTIN. LABEL CONDUIT.
 - PROVIDE POWER FOR INTERNALLY LIGHTED SIGN. VOLTAGE IS 277V, 1PH. ALLOWED WATTS FOR FAR SOUTHEAST SIGN IS 1300W ON #8 WIRE. IF ADDITIONAL WATTS ARE NEEDED, THEN PROVIDE #6 WIRE. COORDINATE REQUIREMENTS AND DISCONNECTING MEANS LOCATION WITH SIGN IN FIELD.

THIS AREA UNDER SEPARATE OWNERSHIP, NOT A PART

APPROX. DISTANCE BETWEEN SIGNS IS 570 FT. COORDINATE WITH GC FOR TRENCHING & EXISTING UTILITIES.
 H-14 (10)





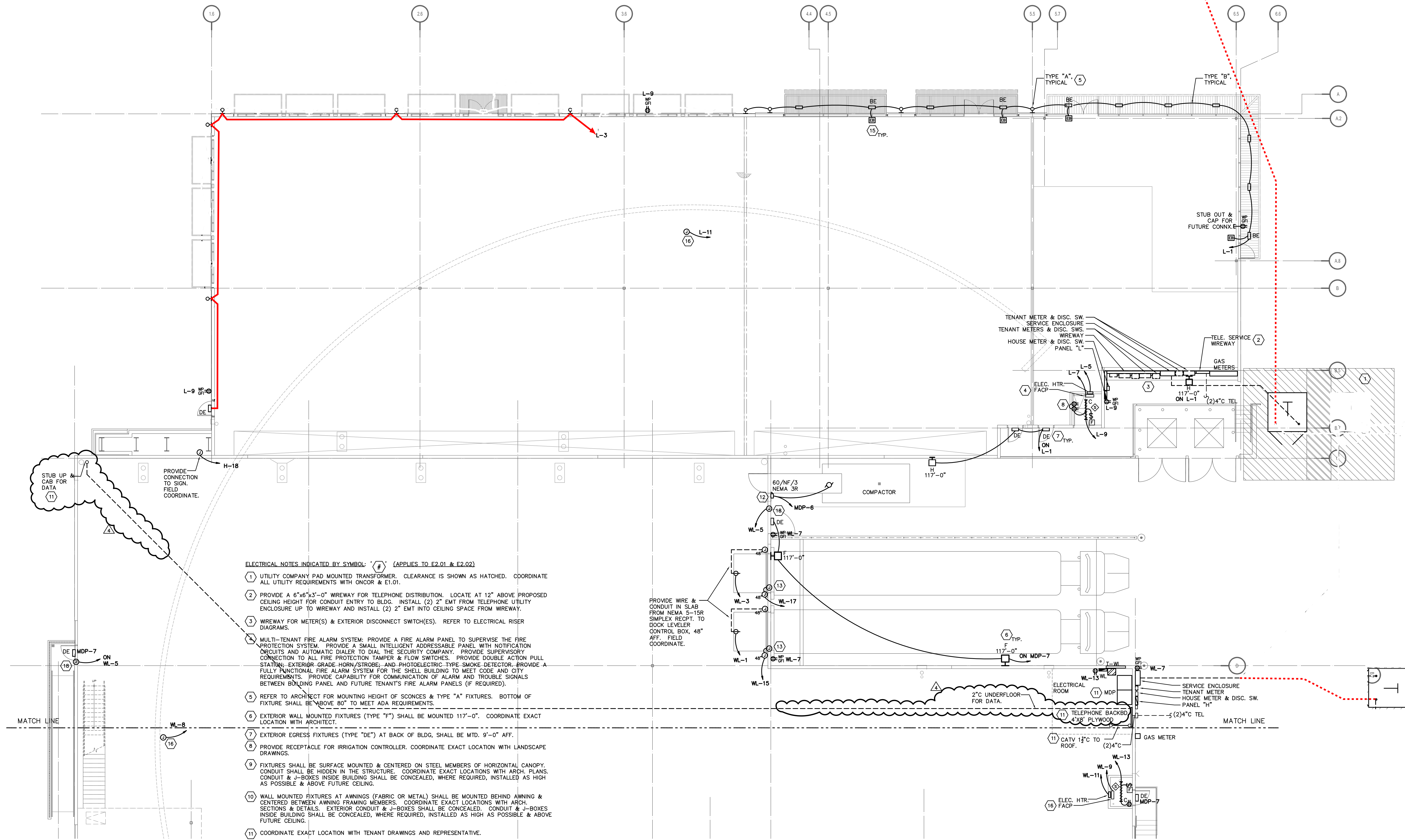
No.	Date	Item
2	06.14.12	Addendum #2
3	08.17.12	ASI #1
4	10.07.12	ASI #2

No.	Date	Item
BBM		
Drawn		
BBM		
Checked		
BBM		
Approved		

FLOOR PLAN - NORTH ELECTRICAL

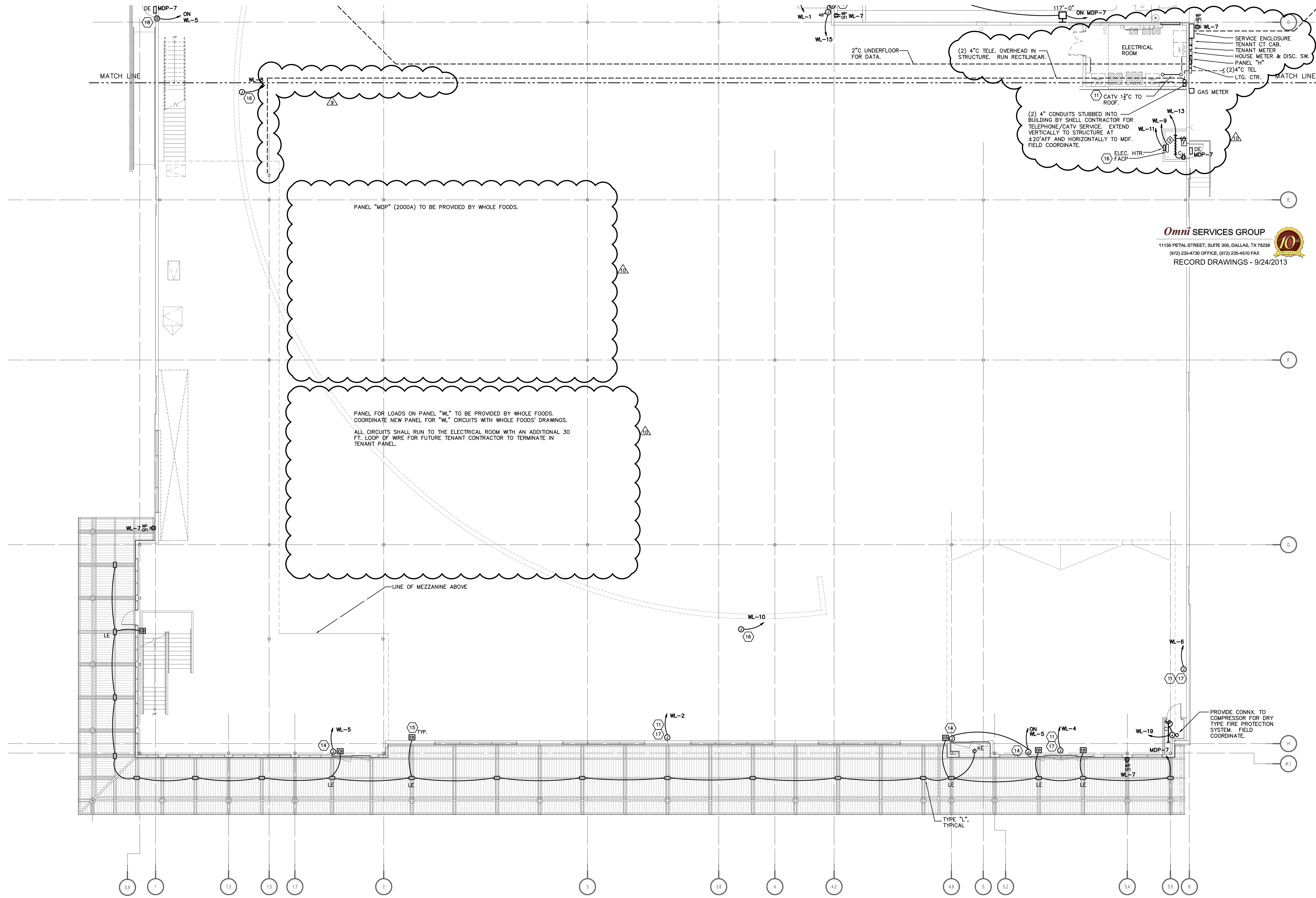
Project No.	11013.03
Date	05.25.12
Last Revision	10.07.12

E2.01



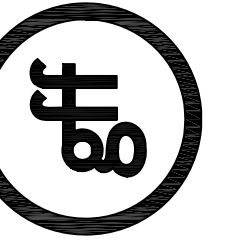
- ELECTRICAL NOTES INDICATED BY SYMBOL: ' # ' (APPLIES TO E2.01 & E2.02)
- UTILITY COMPANY PAD MOUNTED TRANSFORMER. CLEARANCE IS SHOWN AS HATCHED. COORDINATE ALL UTILITY REQUIREMENTS WITH ONCOR & ET.01.
 - PROVIDE A 6"x6"x3'-0" WIREWAY FOR TELEPHONE DISTRIBUTION. LOCATE AT 12" ABOVE PROPOSED CEILING HEIGHT FOR CONDUIT ENTRY TO BLDG. INSTALL (2) 2" EMT FROM TELEPHONE UTILITY ENCLOSURE UP TO WIREWAY AND INSTALL (2) 2" EMT INTO CEILING SPACE FROM WIREWAY.
 - WIREWAY FOR METER(S) & EXTERIOR DISCONNECT SWITCH(ES). REFER TO ELECTRICAL RISER DIAGRAMS.
 - MULTI-TENANT FIRE ALARM SYSTEM: PROVIDE A FIRE ALARM PANEL TO SUPERVISE THE FIRE PROTECTION SYSTEM. PROVIDE A SMALL INTELLIGENT ADDRESSABLE PANEL WITH NOTIFICATION CIRCUITS AND AUTOMATIC DIALER TO DIAL THE SECURITY COMPANY. PROVIDE SUPERVISORY CONNECTION TO ALL FIRE PROTECTION TAMPERS & FLOW SWITCHES. PROVIDE DOUBLE ACTION PULL STATION; EXTERIOR GRADE HORN/STROBE; AND PHOTOELECTRIC TYPE SMOKE DETECTOR. PROVIDE A FULLY FUNCTIONAL FIRE ALARM SYSTEM FOR THE SHELL BUILDING TO MEET CODE AND CITY REQUIREMENTS. PROVIDE CAPABILITY FOR COMMUNICATION OF ALARM AND TROUBLE SIGNALS BETWEEN BUILDING PANEL AND FUTURE TENANT'S FIRE ALARM PANELS (IF REQUIRED).
 - REFER TO ARCHITECT FOR MOUNTING HEIGHT OF SCONCES & TYPE "A" FIXTURES. BOTTOM OF FIXTURE SHALL BE ABOVE 80" TO MEET ADA REQUIREMENTS.
 - EXTERIOR WALL MOUNTED FIXTURES (TYPE "F") SHALL BE MOUNTED 117'-0". COORDINATE EXACT LOCATION WITH ARCHITECT.
 - EXTERIOR EGRESS FIXTURES (TYPE "DE") AT BACK OF BLDG. SHALL BE MTD. 9'-0" AFF.
 - PROVIDE RECEPTACLE FOR IRRIGATION CONTROLLER. COORDINATE EXACT LOCATION WITH LANDSCAPE DRAWINGS.
 - FIXTURES SHALL BE SURFACE MOUNTED & CENTERED ON STEEL MEMBERS OF HORIZONTAL CANOPY. CONDUIT SHALL BE HIDDEN IN THE STRUCTURE. COORDINATE EXACT LOCATIONS WITH ARCH. PLANS. CONDUIT & J-BOXES INSIDE BUILDING SHALL BE CONCEALED, WHERE REQUIRED, INSTALLED AS HIGH AS POSSIBLE & ABOVE FUTURE CEILING.
 - WALL MOUNTED FIXTURES AT AWNINGS (FABRIC OR METAL) SHALL BE MOUNTED BEHIND AWNING & CENTERED BETWEEN AWNING FRAMING MEMBERS. COORDINATE EXACT LOCATIONS WITH ARCH. SECTIONS & DETAILS. EXTERIOR CONDUIT & J-BOXES SHALL BE CONCEALED. CONDUIT & J-BOXES INSIDE BUILDING SHALL BE CONCEALED, WHERE REQUIRED, INSTALLED AS HIGH AS POSSIBLE & ABOVE FUTURE CEILING.
 - COORDINATE EXACT LOCATION WITH TENANT DRAWINGS AND REPRESENTATIVE.
 - PROVIDE CONNECTION TO COMPACTOR. FIELD COORDINATE EXACT HP & SIZE OF BREAKER WITH EXACT UNIT.
 - PROVIDE CONNECTION TO OVERHEAD DOORS. FIELD COORDINATE EXACT REQUIREMENTS.
 - PROVIDE CONNECTION TO AUTOMATIC DOORS. FIELD COORDINATE EXACT REQUIREMENTS.
 - REMOTE EMERGENCY BATTERY PACK LOCATION. FIELD COORDINATE.
 - SINGLE TENANT FIRE ALARM SYSTEM: PROVIDE A FIRE ALARM PANEL TO SUPERVISE THE FIRE PROTECTION SYSTEM. PROVIDE A SMALL INTELLIGENT ADDRESSABLE PANEL WITH NOTIFICATION CIRCUITS AND AUTOMATIC DIALER TO DIAL THE SECURITY COMPANY. PROVIDE SUPERVISORY CONNECTION TO ALL FIRE PROTECTION TAMPERS & FLOW SWITCHES. PROVIDE SINGLE ACTION PULL STATION; EXTERIOR GRADE HORN/STROBE; AND PHOTOELECTRIC TYPE SMOKE DETECTOR. PROVIDE A FULLY FUNCTIONAL FIRE ALARM SYSTEM FOR THE SHELL BUILDING TO MEET CODE AND CITY REQUIREMENTS. PROVIDE CAPABILITY FOR FUTURE EXPANSION BY TENANT FOR TENANT'S FUTURE AUDIBLE/VISUAL APPLIANCES, SMOKE & DUCT MTD. SMOKE DETECTORS, PULL STATIONS, ETC.
 - PROVIDE J-BOX AND CONNECTION TO FUTURE SIGN. FIELD COORDINATE EXACT REQUIREMENTS.
 - PROVIDE CONNECTION TO ELEC. LOCK AT DOOR. FIELD COORDINATE EXACT REQUIREMENTS.

NORTH
 1 FLOOR PLAN - NORTH - ELECTRICAL
 SCALE: 1/8"=1'-0"



Omni SERVICES GROUP
 11130 PETAL STREET, SUITE 308, DALLAS, TX 75238
 (972) 236-4730 OFFICE, (972) 238-4570 FAX
 RECORD DRAWINGS - 9/24/2013

Good Fulton & Farrell Architects
 214.303.1500 / tel
 214.303.1512 / fax
 www.gff.com
 2808 Fairmount Street
 Suite 300
 Dallas, Texas 75201
 © Good Fulton & Farrell 2009



McInnish Engineering, PLLC
 Texas Firm Reg. #: 71032319
 10601 FM 2222, Suite R-128
 Austin, TX 78730
 Dallas: 212.870.9450
 Dallas: 214.613.0501

VILLAGE ON THE PARKWAY
 5100 BELT LINE ROAD
 Addison, Texas 75254

No.	Date	Item
△ 2	06.14.12	Addendum #2
△ 3	11.15.12	ASI #5
△ 4	12.07.12	ASI #6
△ 10	01.22.13	ASI #8

BBM
 Drawn
 BBM
 Checked
 BBM
 Approved

NORTH
1 FLOOR PLAN - SOUTH - ELECTRICAL
 SCALE: 1/8"=1'-0"

FLOOR PLAN - SOUTH ELECTRICAL

Project No.	11013.03
Date	05.25.12
Last Revision	01.21.13

E2.02

