

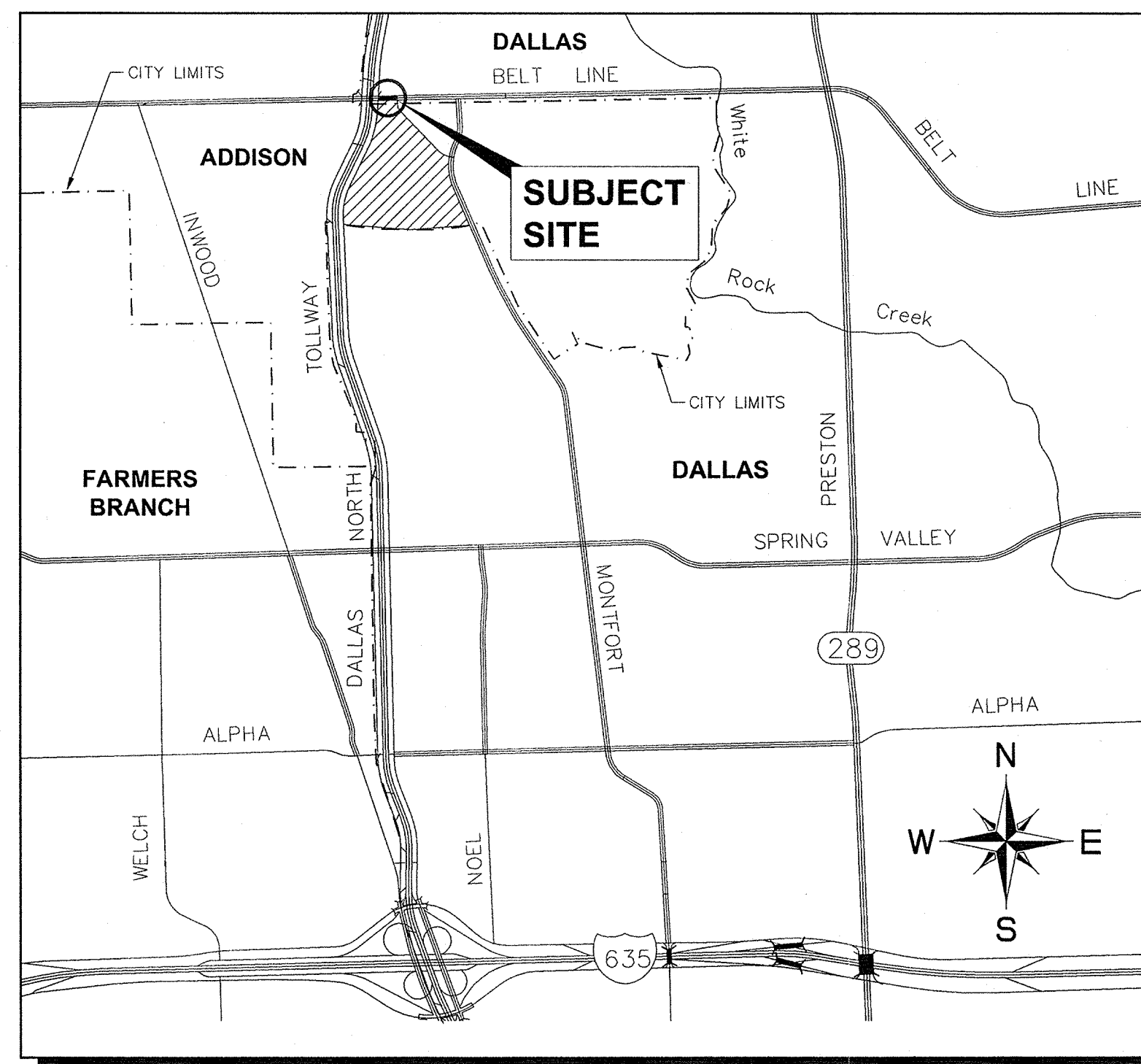
TURN LANE IMPROVEMENT PLANS

FOR

BELT LINE ROAD

TOWN OF ADDISON, DALLAS COUNTY, TEXAS

TURN LANE IMPROVEMENTS BELT LINE ROAD
CITY OF ADDISON PROJECT NUMBER: 2012-02
CITY OF DALLAS PROJECT NUMBER: 311T - 8155



VICINITY MAP
(NOT TO SCALE)

INDEX OF SHEETS

SHEET #	SHEET TITLE	DATE	REVISION
C-01	COVER SHEET	06/14/2013	
C-02	GENERAL NOTES	06/14/2013	
C-03	DEMOLITION PLAN	06/14/2013	
C-04	PAVING & DIMENSION CONTROL PLAN	06/14/2013	
C-05	DRAINAGE PATTERNS & CROSS SECTIONS	06/14/2013	
C-06	TRAFFIC CONTROL PLAN	06/14/2013	
C-07	CONSTRUCTION DETAILS I	06/14/2013	
C-08	CONSTRUCTION DETAILS II	06/14/2013	


BENCHMARKS

- BM 1: 2" BRASS DISK STAMPED "TXDOT COA-5 GPS" 190± SOUTH FROM THE INTERSECTION OF EDWIN LEWIS DRIVE AND QUORUM DRIVE; 2± FROM WEST EDGE OF SIDEWALK; 50.5± FROM THE WEST SIDE OF MEDIAN IN QUORUM DRIVE & 76± FROM FIRE HYDRANT.
ELEV=630.10
- BM 2: 2" BRASS DISK STAMPED "TXDOT COA-10 GPS" AT THE NORTHWEST CORNER OF HAVENSHIRE PLACE AND BELLBROOK DRIVE; 21.80± FROM SANITARY SEWER MANHOLE, 11.10± FROM STREET SIGN & 2.45± TO PC IN SIDEWALK.
ELEV=593.89
- BM 3: CITY OF DALLAS WATER DEPT. BENCHMARK; "□" ON CONCRETE BASE OF 6" BRICK WALL AT THE NORTHEAST CORNER OF CELESTIAL ROAD AND MONTFORT DRIVE.
ELEV=626.81
- BM 4: STANDARD CITY OF DALLAS WATER DEPT. BENCHMARK ON CONCRETE CURB ON STORM SEWER INLET AT THE NORTHEAST CORNER OF HUGHES LANE AND PRESTON ROAD; 30± NORTH OF HUGHES LANE.
ELEV=573.18
- BM 5: "X" SET ON NORTHWEST CORNER OF CONCRETE PAD FOR SH/B TELEPHONE BOX, 15± EAST OF NORTHBOUND DALLAS NORTH TOLLWAY ACCESS ROAD AND 1,450± SOUTH OF BELT LINE ROAD.
ELEV=634.30
- BM 6: "X" SET ON SOUTHEAST CORNER OF CURB INLET; 15± WEST OF MONTFORT DRIVE AND 750± SOUTH OF SAKOWITZ DRIVE.
ELEV=603.67
- BM 7: "X" SET ON SOUTHWEST CORNER OF CURB INLET ON SOUTH SIDE OF BELT LINE ROAD AND 200± EAST OF DALLAS NORTH TOLLWAY.
ELEV=627.26
- BM 8: "X" SET ON NORTHEAST CORNER OF "Y" INLET 20± SOUTH OF SAKOWITZ DRIVE AND 315± NORTHWEST OF MONTFORT DRIVE.
ELEV=616.09
- BM 9: "X" SET ON SOUTHEAST CORNER OF CURB INLET ON EAST SIDE OF DALLAS NORTH TOLLWAY ACCESS ROAD AND 300± SOUTH OF BELT LINE ROAD.
ELEV=627.34


OWNER / DEVELOPER

VOP, LP
2000 MCKINNEY AVENUE
SUITE 1000
DALLAS, TX 75201
CONTACT: JARROD YATES

ENGINEER

 **Kimley-Horn and Associates, Inc.**
5750 GENESIS COURT
FRISCO, TEXAS 75034
PH. (972) 335-3580
CONTACT: TREY BRASWELL, P.E.
FIRM NO. F-928

SURVEYOR

 **Kimley-Horn and Associates, Inc.**
12700 PARK CENTRAL DRIVE
DALLAS, TEXAS 75251
SUITE 1800
PH. (972) 770-1300
CONTACT: DANA BROWN, R.P.L.S.
FIRM NO. F-928

CITY OF ADDISON PROJECT #: 2012-02
CITY OF DALLAS PROJECT #: 311T - 8155
APRIL 2013

RECORD DRAWINGS
(October 2013)

INFORMATION PROVIDED BY:
Bob Moore Construction

STOP!
CALL BEFORE YOU DIG
DIG TESS
1-800-DIG-TESS
(at least 72 hours prior to digging)

