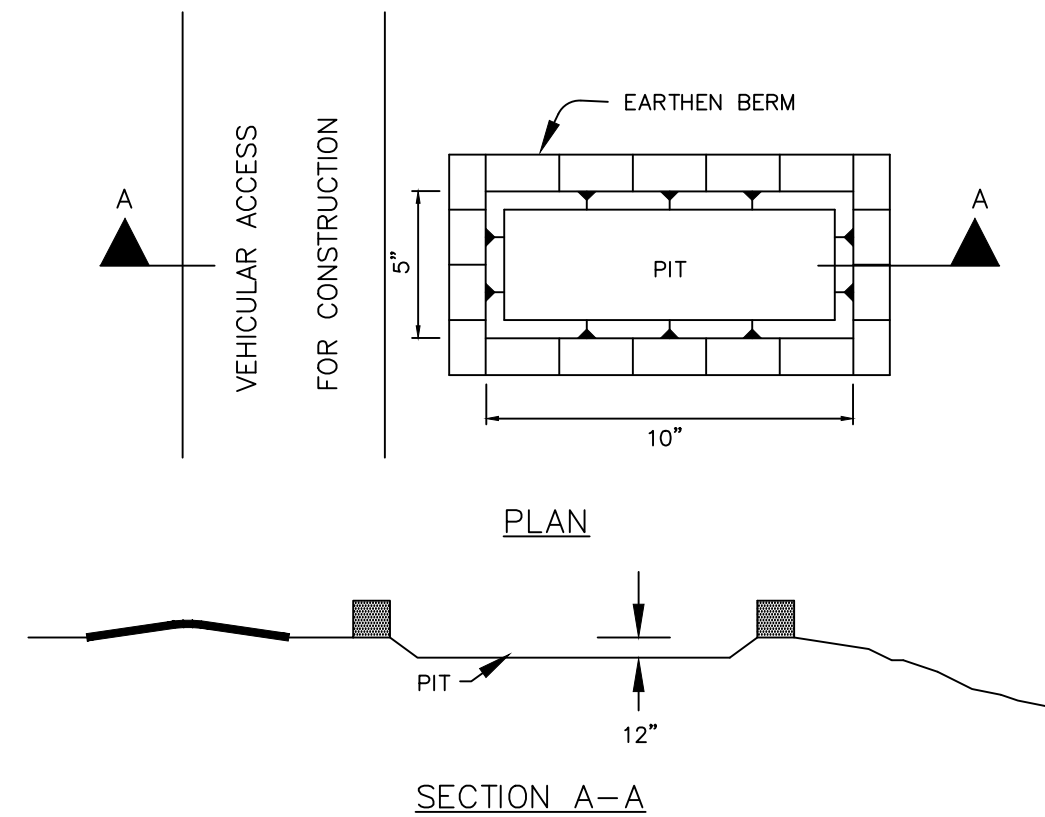


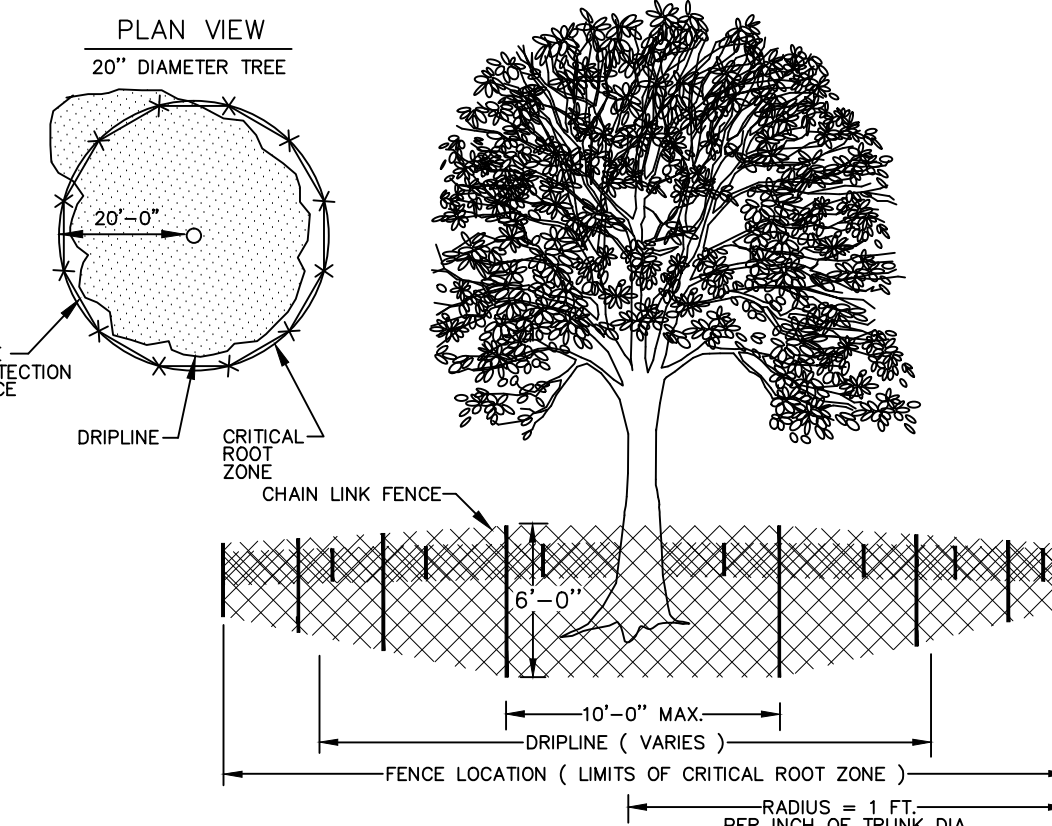
- NOTES:
- WHERE MINIMUM CLEARANCES CAUSE TRAFFIC TO DRIVE IN THE GUTTER, THE CONTRACTOR MAY SUBSTITUTE A 25 mm x 100 mm (1" x 4") BOARD SECURED WITH CONCRETE NAILS 1 m (3') O.C. NAILED INTO THE GUTTER IN LIEU OF SANDBAGS TO HOLD THE FILTER DIKE IN PLACE. UPON REMOVAL, CLEAN ANY DIRT/DEBRIS FROM NAILING LOCATIONS, APPLY CHEMICAL SANDING AGENT AND APPLY NON-SHRINK GROUT FLUSH WITH SURFACE OF GUTTER.
  - A SECTION OF FILTER FABRIC SHALL BE REMOVED AS SHOWN ON THIS DETAIL OR AS DIRECTED BY THE ENGINEER OR DESIGNATED REPRESENTATIVE. FABRIC MUST BE SECURED TO WIRE BACKING WITH CLIPS OR HOE RINGS AT THIS LOCATION.
  - DAILY INSPECTION SHALL BE MADE BY THE CONTRACTOR AND SILT ACCUMULATION MUST BE REMOVED WHEN DEPTH REACHES 50 mm (2").
  - CONTRACTOR SHALL MONITOR THE PERFORMANCE OF INLET PROTECTION DURING EACH RAINFALL EVENT AND IMMEDIATELY REMOVE THE INLET PROTECTIONS IF THE STORM-WATER BEGINS TO OVERTOP THE CURB.
  - INLET PROTECTIONS SHALL BE REMOVED AS SOON AS THE SOURCE OF SEDIMENT IS STABILIZED.

**C5.1 INLET PROTECTION**  
NOT TO SCALE

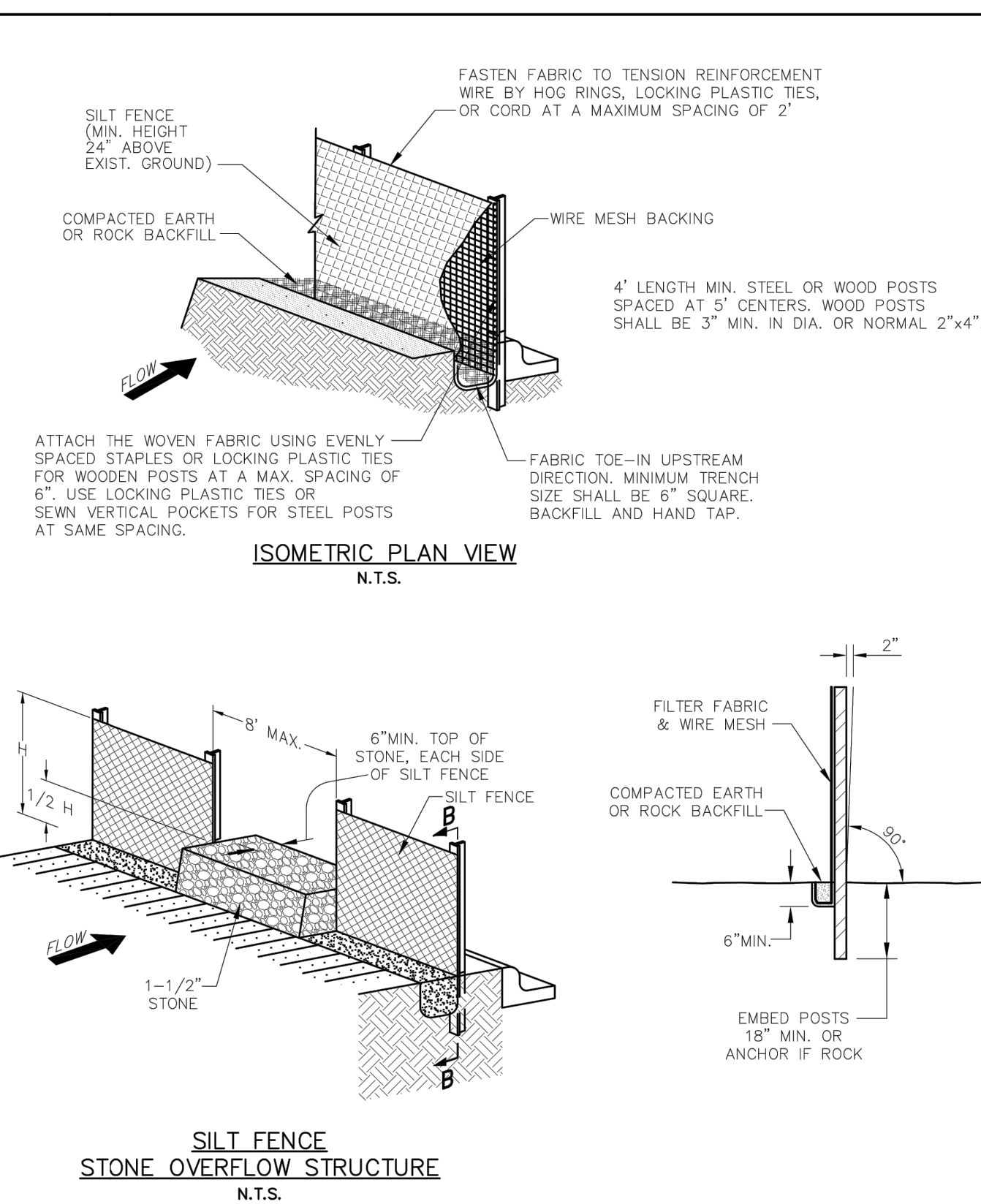


- NOTES:
- DETAIL ILLUSTRATES MINIMUM DIMENSIONS. PIT CAN BE INCREASED IN SIZE DEPENDING ON EXPECTED FREQUENCY OF USE.
  - WASHOUT PIT SHALL BE LOCATED IN AN AREA EASILY ACCESSIBLE TO CONSTRUCTION TRAFFIC.
  - WASHOUT PIT SHALL NOT BE LOCATED IN AREAS SUBJECT TO INUNDATION FROM STORM WATER RUNOFF.

**C5.2 CONCRETE TRUCK WASHOUT PIT**  
NOT TO SCALE

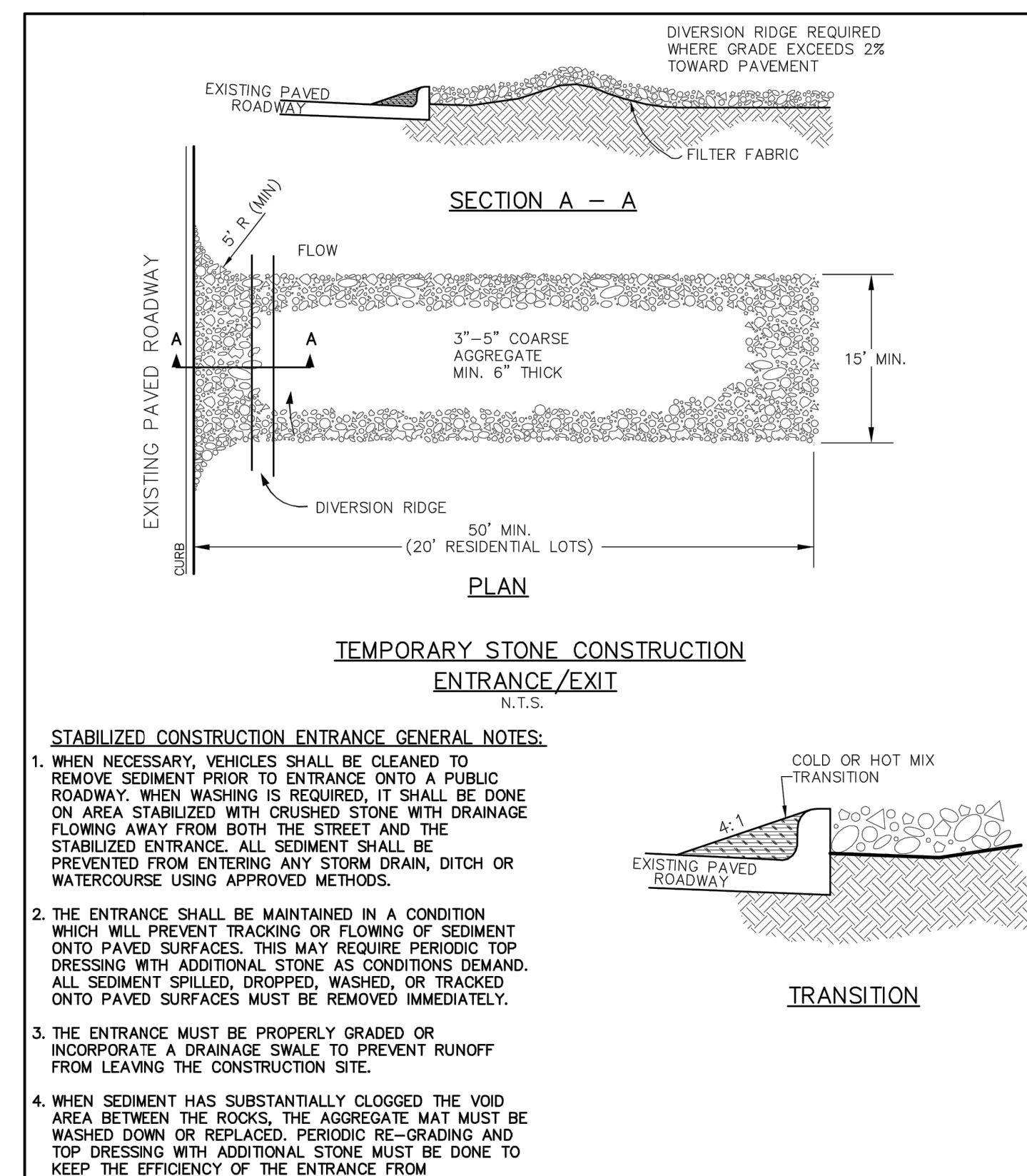


**C5.3 TREE PROTECTION**  
NOT TO SCALE



	SILT FENCE DETAIL	STANDARD CONSTRUCTION DETAILS EROSION CONTROL	
		DATE: AUGUST, 2010	SHEET: 50-E002

**C5.4 SILT FENCE**  
NOT TO SCALE



	TEMPORARY STONE CONSTRUCTION ENTRANCE/EXIT	STANDARD CONSTRUCTION DETAILS EROSION CONTROL	
		DATE: AUGUST, 2010	SHEET: 50-E003

**C5.5 CONSTRUCTION ENTRANCE**  
NOT TO SCALE

- EROSION CONTROL PLAN NOTES**
- ALL OPERATORS AND/OR CONTRACTORS SHALL CONFORM TO THE TERMS AND CONDITIONS OF THE TEXAS COMMISSION ON ENVIRONMENTAL QUALITY (TCEQ), TPDES GENERAL PERMIT NO. TXR 150000 ISSUED AND DATED MARCH 5, 2003.
  - THE NOTICE OF INTENT (NOI), AS REQUIRED BY THE GENERAL PERMIT, MUST BE PROPERLY DISPLAYED ON SITE AT ALL TIMES BY EACH OPERATOR.
  - ALL RELEASES OF THE REPORTABLE QUANTITIES OF HAZARDOUS SUBSTANCES SHALL BE REPORTED IMMEDIATELY TO THE FACILITY OPERATOR, EPA AND TCEQ.
  - QUALIFIED OPERATOR PERSONNEL MUST INSPECT THE SITE AT LEAST ONCE EVERY 14 DAYS AND WITHIN 24 HOURS OF A STORM EVENT OF 0.5 INCHES OR GREATER. AS AN ALTERNATIVE, AN INSPECTION CAN BE CONDUCTED ONCE EVERY SEVEN (7) CALENDAR DAYS ON A DEFINED DAY. A DECISION ON WHICH METHOD TO USE MUST BE DECIDED BEFORE WORK BEGINS AND MUST BE FOLLOWED THROUGHOUT THE PROJECT.
  - MODIFICATIONS TO THE STORM WATER POLLUTION PREVENTION PLAN SHALL BE IMPLEMENTED AND BE IN-PLACE WITHIN A SEVEN CALENDAR DAY PERIOD.
  - IF ANY CONTRACTOR SEES A VIOLATION BY AN OPERATOR OR ANOTHER CONTRACTOR, THAT OPERATOR OR CONTRACTOR IN VIOLATION SHALL BE NOTIFIED AS WELL AS THE FACILITY OPERATOR.
  - EROSION CONTROL SHALL BE INSTALLED PRIOR TO GRADING.
  - ACCUMULATED SILT DEPOSITS SHALL BE REMOVED FROM SILT FENCES AND HAY BALE DIKES WHEN SILT DEPTH REACHES THREE INCHES OR 25%.
  - THE CONTRACTOR SHALL ADD OR DELETE EROSION PROTECTION AT THE REQUEST AND DIRECTION OF THE OPERATOR OR TOWN.
  - AFTER INSTALLATION OF PAVEMENT, FINAL LOT BENCHMARKING AND GENERAL CLEANUP, THE CONTRACTOR SHALL ESTABLISH GRASS GROUNDCOVER IN ALL STREET PARKWAYS, LOT AND ALL OTHER DISTURBED AREAS. SODDING SHALL BE DONE AS SPECIFIED BY SECTION 202.5 AND SEEDING AS SPECIFIED BY SECTION 202.6 OF THE OCTOBER 2004 OR LATEST EDITION OF NCTCOG STANDARD SPECIFICATION.
  - IT SHALL BE THE CONTRACTOR'S RESPONSIBILITY TO CONTROL AND LIMIT SILT AND SEDIMENT LEAVING THE SITE. SPECIFICALLY, THE CONTRACTOR SHALL PROTECT ALL PUBLIC STREETS, ALLEYS, STREAMS AND STORM DRAINAGE SYSTEMS FROM EROSION DEPOSITS.
  - A DRAINAGE AREA MAP WILL BE INCLUDED WITH THE EROSION CONTROL PLAN.
  - CONSTRUCTION WASTE DISPOSAL CONTAINERS SHALL BE PROVIDED ON THE SITE FOR DISPOSAL OF ALL NON-HAZARDOUS CONSTRUCTION WASTE MATERIALS. THE CONTAINERS SHALL BE HAULED TO LANDFILL BY THE CONTRACTOR.
  - ALL HAZARDOUS MATERIALS SHALL BE HANDLED AND DISPOSED OF BY THE CONTRACTOR IN ACCORDANCE WITH FEDERAL, STATE AND LOCAL REGULATIONS.
- SILT FENCE NOTES**
- POSTS WHICH SUPPORT THE SILT FENCE SHALL BE INSTALLED ON A SLOIGHT ANGLE TOWARD THE ANTICIPATED RUNOFF SOURCE. THE POST MUST BE EMBEDDED A MINIMUM OF 18 INCHES.
  - THE TOE OF THE SILT FENCE SHALL BE TRENCHED IN WITH A SHARP OR MECHANICAL TRENCHER, SO THAT THE DOWNDRIFT OF THE TRENCH IS FLAT AND PERPENDICULAR TO THE LINE OF THE SILT FENCE. THE TRENCH CANNOT BE TRENCHED IN (E.G. PAVEMENT). NIGHT FABRIC FLAG WITH WASHED GRAVEL ON THE UPHILL SIDE TO PREVENT FLOW UNDER FENCE.
  - THE TRENCH MUST BE A MINIMUM OF 6 INCHES DEEP AND 6 INCHES WIDE TO ALLOW FOR THE SILT FENCE FABRIC TO BE Laid IN THE GROUND AND BACKFILLED WITH COMPACTED MATERIAL.
  - SILT FENCE SHALL BE SECURELY FASTENED TO EACH SUPPORT POST OR TO WOVEN WIRE, WHICH IS IN TURN ATTACHED TO THE SUPPORT POST. THERE SHALL BE A 6 INCH DOUBLE OVERLAP, SECURELY FASTENED WHERE ENDS OF FABRIC MEET.
  - INSPECTION SHALL BE MADE EVERY TWO WEEKS OR AFTER EACH RAINFALL. REPAIR OR REPLACEMENT SHALL BE PROMPTLY AS NEEDED.
  - SILT FENCE SHALL BE REMOVED WHEN THE SITE IS COMPLETELY STABILIZED SO AS NOT TO BLOCK OR IMPEDE STORM FLOW OR DRAINAGE.
  - ACCUMULATED SILT SHALL BE REMOVED WHEN IT REACHES A DEPTH OF 3 INCHES. THE SILT SHALL BE DISPOSED OF AT AN APPROVED SITE AND IN SUCH A MANNER AS TO NOT CONTRIBUTE TO ADDITIONAL SILTATION.

	EROSION CONTROL & SILT FENCE NOTES	STANDARD CONSTRUCTION DETAILS EROSION CONTROL	
		DATE: AUGUST, 2010	SHEET: 50-E001

**C5.6 CITY EROSION CONTROL NOTES**  
NOT TO SCALE

**SPECIFICATIONS: STORM WATER POLLUTION PREVENTION PLAN / TPDES**

- FURNISH AND INSTALL TEMPORARY AND PERMANENT STORM WATER POLLUTION PREVENTION CONTROL MEASURES SHOWN IN THE PLANS. CONSTRUCT IMPROVEMENTS IN COMPLIANCE WITH THE INTENT OF SUCH POLLUTION CONTROL MEASURES, TPDES PERMITS, OR OTHER LOCAL WATERWAY DEVELOPMENT PERMITS.
- CONTRACTOR IS RESPONSIBLE FOR ALL POLLUTION PREVENTION MEASURES SHOWN IN THE STORM WATER POLLUTION PREVENTION PLAN (SWPPP).
  - SUBMIT A STORM WATER TPDES GENERAL PERMIT NOTICE OF INTENT (NOI) AT LEAST TWO DAYS PRIOR TO START OF CONSTRUCTION TO THE APPROPRIATE AGENCY SHOWN ON THE SWPPP.
  - POST SIGNED AND COMPLETED NOI POSTING NOTICE OR CONSTRUCTION SITE NOTICE (CSN) AT THE CONSTRUCTION ENTRANCE FOR PUBLIC VIEWING, AND KEEP A COPY OF THE SWPPP AT THE JOB SITE AT ALL TIMES.
  - INSTALL AND MAINTAIN POLLUTION CONTROL MEASURES IN ACCORDANCE WITH MANUFACTURER'S SPECIFICATIONS AND WITH PROJECT SPECIFICATIONS.
  - INSTALL EROSION CONTROL MEASURES AND CONSTRUCTION ENTRANCES AS SHOWN IN THE SWPPP PRIOR TO BEGINNING CONSTRUCTION. POLLUTION CONTROL MEASURES SHALL BE REPAIRED, REESTABLISHED, ADJUSTED OR REINSTALLED WITH EACH SUBSEQUENT PHASE OF CONSTRUCTION IN ACCORDANCE WITH THE SWPPP.
  - CONTRACTOR IS RESPONSIBLE FOR ANY SEDIMENT THAT ESCAPES THE CONSTRUCTION SITE, AND SHALL REMOVE THE ACCUMULATION OF OFF-SITE SEDIMENT PROMPTLY.
  - MAINTAIN SEDIMENT TRAPS OR SEDIMENTATION BASINS.
  - OFF-SITE MATERIAL STORAGE AREAS USED SOLELY BY THE PROJECT ARE CONSIDERED PART OF THE PROJECT.
  - MAINTAIN RECORDS OF PROJECT MILESTONE DATES AND FIELD CHANGES AS REQUIRED BY THE SWPPP.
  - INSPECT POLLUTION CONTROL MEASURES EVERY 14 DAYS AND WITHIN 24 HOURS AFTER A STORM EVENT GREATER THAN 0.5 INCHES OF RAINFALL. AN INSPECTION REPORT SHALL BE RECORDED AS REQUIRED BY THE SWPPP.
  - DEFICIENCIES NOTED DURING THE INSPECTION WILL BE CORRECTED AND DOCUMENTED WITHIN SEVEN CALENDAR DAYS OR BEFORE THE NEXT ANTICIPATED STORM EVENT.
  - PRIOR TO CONSTRUCTION, MAKE CERTAIN THE NOTICE OF INTENT (NOI) OR CONSTRUCTION SITE NOTICE (CSN) HAS BEEN FILED AND POSTED ON SITE FOR PUBLIC VIEWING AND THE TPDES REPORT AND SWPPP ARE AVAILABLE AT THE TRAILER.
  - INSTALL STORM WATER POLLUTION PREVENTION CONTROLS PRIOR TO ANY SITE PREPARATION WORK (CLEARING, GRUBBING, EXCAVATION).
  - THE PLACEMENT OF STORM WATER POLLUTION PREVENTION CONTROLS SHALL BE IN ACCORDANCE WITH THE APPROVED STORM WATER POLLUTION PREVENTION CONTROL PLAN.
  - A PRE-CONSTRUCTION CONFERENCE SHALL BE HELD ON-SITE WITH THE CONTRACTOR AND ENGINEER AFTER INSTALLATION OF THE STORM WATER POLLUTION PREVENTION CONTROLS AND PRIOR TO BEGINNING ANY SITE PREPARATION WORK IF REQUIRED BY THE LOCAL REQUIREMENTS.
  - ANY MAJOR VARIATION IN MATERIALS OR LOCATIONS OF CONTROLS OR FENCES FROM THOSE SHOWN ON THE APPROVED PLANS WILL REQUIRE A REVISION AND MUST BE APPROVED BY THE ENGINEER AS APPROPRIATE. MINOR CHANGES TO BE MADE AS FIELD REVISIONS TO THE STORM WATER POLLUTION PREVENTION CONTROL PLAN MAY BE REQUIRED BY THE ENGINEER DURING THE COURSE OF CONSTRUCTION TO CORRECT CONTROL INADEQUACIES.
  - THE CONTRACTOR IS REQUIRED TO INSPECT THE CONTROLS AND FENCES AT INTERVALS OF AT LEAST ONCE EVERY TWO (2) WEEKS AND IMMEDIATELY AFTER SIGNIFICANT RAINFALL EVENTS TO INSURE THAT THEY ARE FUNCTIONING PROPERLY. THE PERSON(S) RESPONSIBLE FOR MAINTENANCE OF CONTROLS AND FENCES SHALL IMMEDIATELY MAKE ANY NECESSARY REPAIRS TO DAMAGED AREAS. SILT ACCUMULATION AT CONTROLS MUST BE REMOVED WHEN THE DEPTH REACHES SIX (6) INCHES.
  - PRIOR TO FINAL ACCEPTANCE BY THE CITY, HAUL ROADS AND WATERWAY CROSSINGS CONSTRUCTED FOR TEMPORARY CONTRACTOR ACCESS MUST BE REMOVED, ACCUMULATED SEDIMENT REMOVED FROM THE WATERWAY AND THE AREA RESTORED TO THE ORIGINAL GRADE AND REVEGETATED. ALL LAND CLEARING DEBRIS SHALL BE DISPOSED OF PROPERLY.

- WHERE SILT FENCE CANNOT BE PROPERLY INSTALLED USE TRIANGULAR FILTRATION DIKE.
- SOIL DISTURBANCES SHALL BE MINIMIZED BY EXPOSING ONLY THE SMALLEST PRACTICAL AREA OF LAND REQUIRED FOR THE CLEARING AND GRADING ACTIVITY AND FOR THE CONSTRUCTION ACTIVITY. FOR THE SHORTEST PRACTICAL PERIOD OF TIME.
  - STABILIZATION MEASURES WILL BE INITIATED AS SOON AS PRACTICABLE IN PORTIONS OF THE SITE WHERE CONSTRUCTION ACTIVITIES HAVE TEMPORARILY OR PERMANENTLY CEASED, AND EXCEPT AS PROVIDED BELOW, WILL BE INITIATED NO MORE THAN FOURTEEN (14) DAYS AFTER THE CONSTRUCTION ACTIVITY IN THAT PORTION OF THE SITE HAS TEMPORARILY OR PERMANENTLY CEASED.
  - WHERE CONSTRUCTION ACTIVITY ON A PORTION OF THE SITE IS TEMPORARILY CEASED, AND EARTH DISTURBING ACTIVITIES WILL BE RESUMED WITHIN TWENTY-ONE (21) DAYS, TEMPORARY STABILIZATION MEASURES DO NOT HAVE TO BE INITIATED ON THAT PORTION OF SITE.
  - TRAFFIC LEAVING THE CONSTRUCTION SITE WILL EXIT THROUGH A STABILIZED CONSTRUCTION EXIT AS LOCATED ON THE PLANS, WHEN SOILS HAVE COLLECTED ON THE STABILIZED VEHICULAR EXIT TO AN EXTENT WHICH REDUCES ITS INTENDED EFFECTIVENESS, THE SURFACE WILL BE CLEANED AND REESTABLISHED FOR THE INTENDED PURPOSE.
  - MUD/DIRT INADVERTENTLY TRACKED OFF-SITE AND ONTO PUBLIC STREETS SHALL BE REMOVED IMMEDIATELY.
  - PERMANENT EROSION CONTROL: REFER TO LANDSCAPE PLAN FOR PLATING REQUIREMENTS. IF NOT ADDRESSED BY LANDSCAPE PLAN, THE FOLLOWING SHALL APPLY:
    - A MINIMUM OF FOUR INCHES OF TOPSOIL SHALL BE PLACED IN ALL.
    - THE SEEDING FOR PERMANENT EROSION CONTROL SHALL BE APPLIED OVER AREAS DISTURBED BY CONSTRUCTION AS FOLLOWS UNLESS SPECIFIED OTHERWISE BY THE PROJECT'S LANDSCAPE PLAN: DRAINAGE CHANNELS (EXCEPT ROCK) AND BETWEEN THE CURB AND RIGHT-OF-WAY LINE.
 

BROADCAST SEEDING:

      - FROM SEPTEMBER 15 TO MARCH 1, SEEDING SHALL BE WITH A COMBINATION OF 2 POUNDS PER 1000 SF OF UNHULLED BERMUDA AND 7 POUNDS PER 1000 SF OF WINTER RYE WITH A PURITY OF 95% WITH 90% GERMINATION.
      - FROM MARCH 2 TO SEPTEMBER 14, SEEDING SHALL BE WITH HULLED BERMUDA AT A RATE OF 2 POUNDS PER 1000 SF WITH A PURITY OF 95% WITH 85% GERMINATION.
    - FERTILIZER SHALL BE A PELLETTED OR GRANULAR SLOW RELEASE WITH AN ANALYSIS OF 15-15-15 TO BE APPLIED ONCE AT PLANTING AND ONCE DURING THE PERIOD OF ESTABLISHMENT AT A RATE OF 1 POUND PER 1000 SF.
    - MULCH TYPE USED SHALL BE HAY, STRAW OR MULCH APPLIED AT A RATE OF 45 POUNDS PER 1000 SF, WITH SOIL TACKIFIER AT A RATE OF 1.4 POUNDS PER 1000 SF.
  - FERTILIZER SHALL BE A WATER SOLUBLE FERTILIZER WITH AN ANALYSIS OF 15-15-15 AT A RATE 1.5 POUNDS PER 1000 SF.
  - MULCH TYPE USED SHALL BE HAY, STRAW OR MULCH APPLIED AT A RATE OF 45 POUNDS PER 1000 SF, WITH SOIL TACKIFIER AT A RATE OF 1.4 POUNDS PER 1000 SF.
  - THE PLANTED AREA SHALL BE IRRIGATED OR SPRINKLED IN A MANNER THAT WILL NOT ERODE THE TOPSOIL, BUT WILL SUFFICIENTLY SOAK THE SOIL TO A DEPTH OF SIX INCHES. THE IRRIGATION SHALL OCCUR AT TWO WEEK INTERVALS DURING THE FIRST TWO MONTHS RAINFALL OCCURRENCES OF 1/2 INCH OR MORE SHALL POSTPONE THE WATERING SCHEDULE FOR ONE WEEK. (COORDINATE WITH IRRIGATION PLAN)
  - RESTORATION SHALL BE ACCEPTABLE WHEN THE GRASS HAS GROWN AT LEAST 1 1/2 INCHES HIGH WITH 95% COVERAGE, PROVIDED NO BARE SPOTS LARGER THAN 16 SQUARE FEET EXIST.
  - SEEDING SHALL APPLY TO ALL AREAS WITHIN DISTURBED PROJECT AREA NOT COVERED BY PAVEMENT, BUILDING PAD OR PROJECT LANDSCAPING PLANS.
  - TWO SEEDINGS SHOULD OCCUR DURING PROJECT. FIRST SHOULD OCCUR WITHIN 14 DAYS AFTER PONDS ARE GRADED AND SECOND BY FINAL PUNCH LIST.
- THE EPA GENERAL PERMIT REQUIRES THAT A TEMPORARY OR PERMANENT SEDIMENT BASIN BE INSTALLED IN ANY DRAINAGE LOCATION WHERE MORE THAN 10 ACRES IN THE UPSTREAM DRAINAGE ARE DISTURBED AT ONE TIME. THE SEDIMENT BASIN MUST PROVIDE AT LEAST 3,600 CUBIC FEET OF STORAGE FOR EVERY ACRE IF LAND, WHICH IT DRAINS.

**PLAN OF RECORD**

THIS RECORD DRAWING IS A COMPILATION OF A COPY OF THE SEALED ENGINEERING DRAWING FOR THIS PROJECT; MODIFIED BY ADDENDA, CHANGE ORDERS, AND INFORMATION FURNISHED BY THE CONTRACTOR. THE INFORMATION SHOWN ON THE RECORD DRAWINGS THAT WAS PROVIDED BY THE CONTRACTOR OR OTHERS NOT ASSOCIATED WITH THE DESIGN ENGINEER CANNOT BE VERIFIED FOR ACCURACY OR COMPLETENESS. THE ORIGINAL SEALED DRAWINGS ARE ON FILE AT THE OFFICES OF BURY-SAN, INC. DATE: APRIL 28, 2014.

**C5.7 SPECIFICATIONS**  
SCALE: N.T.S.

APPROVAL	
REVISION	
NO.	
DATE	

**BURY**  
8922 Isom Road, Suite 100  
Dallas, TX 75243  
Tel: (214) 625-0400 Fax: (214) 625-0529  
TPDES Registration Number F-1048  
Copyright © 2014

**Pollo Tropical**

**STORM WATER POLLUTION PREVENTION PLAN DETAILS**  
**POLLO TROPICAL**  
5830 BELT LINE ROAD  
TOWN OF ADDISON, DALLAS COUNTY, TEXAS

PLOTTING SCALE: 1"= 1'
DATE ISSUED: APRIL 2014
FILE: G:\03504\50058\SWPPP
DRAWN BY: BIL
DESIGNED BY: CC
REVIEWED BY: CC
PROJECT NO.: R0103504-05B