

METER TOP

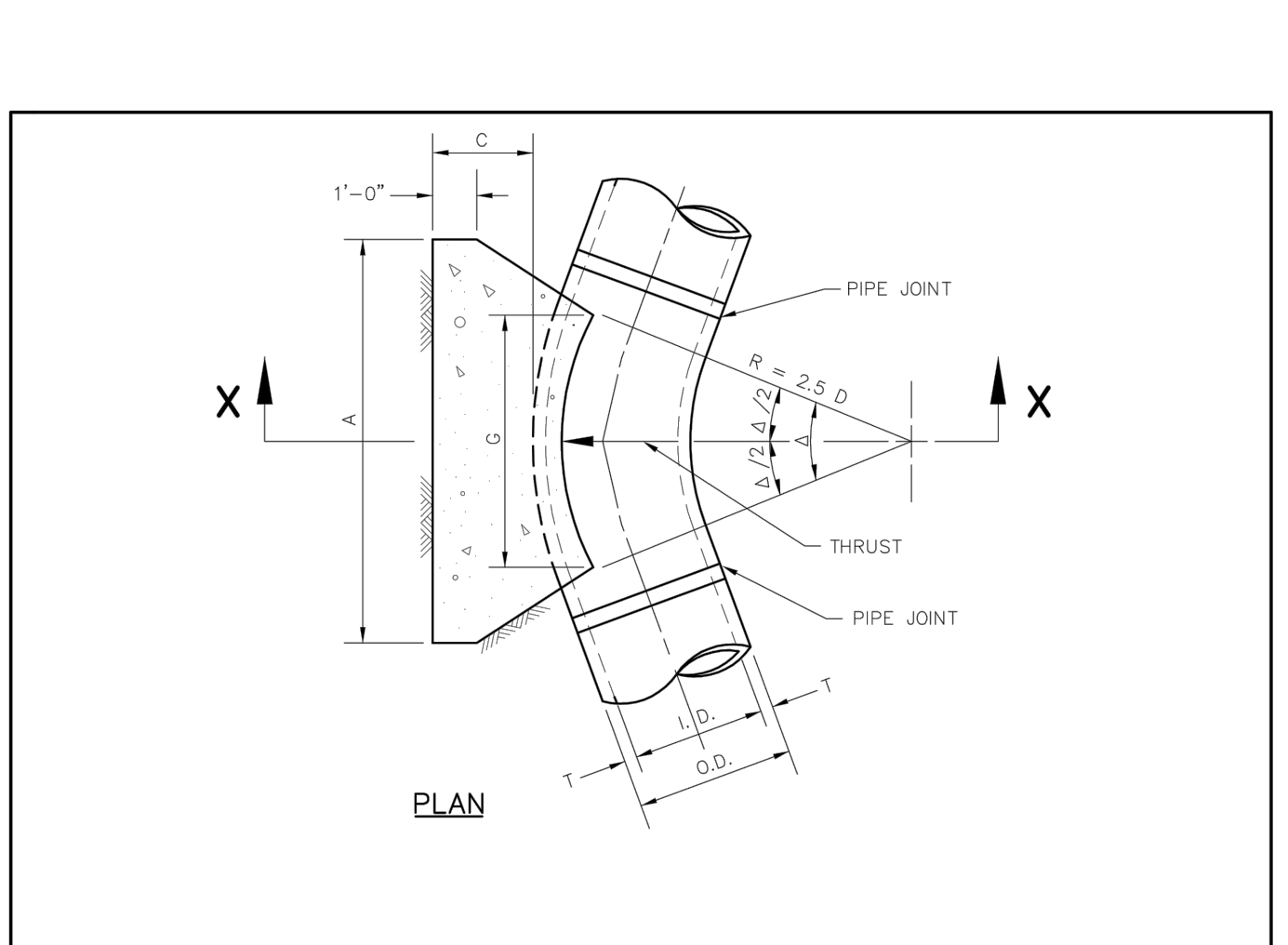
GENERAL INSTALLATION NOTES:

- WATER METER SHALL BE PLACED IN CENTER OF LOT WITH THE SANITARY SEWER SERVICE TO BE LOCATED 10' DOWNSTREAM.
- METER AND BOX SHALL BE SET BY THE CONTRACTOR TO ADDISON STANDARDS IN ALL CASES.
- THE METER BOX SHALL BE SET WITHIN THE R.O.W. OR A DEDICATED UTILITY EASEMENT. IN ALL CASES, THE METER BOX SHALL BE PROTECTED FROM VEHICULAR TRAFFIC.
- WATER SERVICES SHALL NOT BE CONNECTED TO DEAD END LINES OR FIRE HYDRANT LEADS.
- ALL MATERIALS SHALL CONFORM TO THE TOWN OF ADDISON WATER SYSTEM REQUIREMENTS.

Type "K" Copper Service Pipe	Double Strap Bronze Service Saddle with C.C. Threads	Galvanized Meter Box With Iron Ring & Cover			
		Min. Dia. Covers & Rings	Min. Ht.	Min. Can Weight	Min. Total Weight
3/4 inch	3/4 inch	18 inches	12 inches	18 inches	13 lbs.
1 inch	1 inch	24 inches	20 inches	18 inches	17 lbs.
1 1/2 inch	1 1/2 inch	28 inches	20 inches	20 lbs.	127 lbs.
2 inch	2 inch	28 inches	20 inches	18 inches	20 lbs.

TABLES OF DIMENSIONS AND QUANTITIES

I.D. (IN.)	EARTH				ROCK			
	G (FT.)	THRUST (TONS)	A (FT.)	B (FT.)	G (FT.)	THRUST (TONS)	A (FT.)	B (FT.)
4,6,8	0.4	1.0	1.0	1.5	0.1	1.0	1.0	0.1
10,12	0.5	1.5	1.5	2.0	0.1	1.5	1.5	0.1
16,18	0.6	1.5	1.5	1.6	0.1	1.5	1.5	0.1
20	0.7	1.5	1.5	1.8	0.1	1.5	1.5	0.1
24	0.9	1.5	1.5	2.1	0.1	1.5	1.5	0.1
30	2.9	1.5	1.9	2.6	0.1	1.5	1.9	2.6
36	4.5	1.5	2.3	3.3	0.1	1.5	2.3	3.3
42	5.0	1.8	2.6	3.8	0.1	1.8	2.6	3.8
48	5.5	2.0	3.0	4.3	0.1	2.0	3.0	4.3
54	6.0	2.3	3.4	4.8	0.1	2.3	3.4	4.8
60	6.5	2.5	3.8	5.3	0.1	2.5	3.8	5.3
66	6.8	2.8	4.1	5.7	0.1	2.8	4.1	5.7
72	7.5	3.0	4.5	6.3	0.1	3.0	4.5	6.3
78	7.5	3.3	4.9	6.7	0.1	3.3	4.9	6.7
84	8.0	3.5	5.3	7.2	0.1	3.5	5.3	7.2
90	8.5	3.8	5.6	7.7	0.1	3.8	5.6	7.7
96	9.0	4.0	6.0	8.2	0.1	4.0	6.0	8.2



TABLES OF DIMENSIONS AND QUANTITIES

I.D. (IN.)	EARTH				ROCK			
	G (FT.)	THRUST (TONS)	A (FT.)	B (FT.)	G (FT.)	THRUST (TONS)	A (FT.)	B (FT.)
4,6,8	0.4	1.0	1.0	1.5	0.1	1.0	1.0	0.1
10,12	0.6	2.2	1.5	1.5	0.1	1.0	1.5	0.1
16,18	0.8	5.0	2.0	2.5	0.3	1.5	2.0	0.2
20	0.9	6.2	2.0	3.5	0.4	1.5	3.0	0.3
24	1.1	8.9	3.0	3.5	0.5	1.5	3.0	0.3
30	1.4	10.4	3.0	3.5	0.6	2.0	3.5	0.4
36	1.7	15.0	3.5	4.5	0.9	2.0	4.0	0.5
42	1.9	20.4	4.5	5.0	1.2	2.5	5.0	0.8
48	2.2	26.6	4.5	6.0	2.0	2.5	6.0	1.1
54	2.5	33.7	6.0	6.0	3.0	3.0	6.0	1.4
60	2.7	41.6	6.0	7.0	3.8	3.0	7.0	1.8
66	3.0	50.3	6.5	8.0	5.1	3.5	8.0	2.7
72	3.3	59.9	7.5	8.0	6.3	4.0	8.0	3.3
78	3.6	70.2	8.0	9.0	8.1	4.0	9.0	3.9
84	3.8	81.5	8.5	10.0	10.3	4.5	10.0	5.3
90	4.1	93.5	9.5	10.0	12.2	5.0	10.0	6.0
96	4.4	106.4	10.0	11.0	15.0	5.0	11.0	7.4

TABLES OF DIMENSIONS AND QUANTITIES

I.D. (IN.)	EARTH				ROCK			
	G (FT.)	THRUST (TONS)	A (FT.)	B (FT.)	G (FT.)	THRUST (TONS)	A (FT.)	B (FT.)
4,6,8	0.4	1.0	1.0	1.5	0.1	1.0	1.0	0.1
10,12	0.5	1.5	1.5	2.0	0.1	1.5	1.5	0.1
16,18	0.6	1.5	1.5	1.6	0.1	1.5	1.5	0.1
20	0.7	1.5	1.5	1.8	0.1	1.5	1.5	0.1
24	0.9	1.5	1.5	2.1	0.1	1.5	1.5	0.1
30	2.9	1.5	1.9	2.6	0.1	1.5	1.9	2.6
36	4.5	1.5	2.3	3.3	0.1	1.5	2.3	3.3
42	5.0	1.8	2.6	3.8	0.1	1.8	2.6	3.8
48	5.5	2.0	3.0	4.3	0.1	2.0	3.0	4.3
54	6.0	2.3	3.4	4.8	0.1	2.3	3.4	4.8
60	6.5	2.5	3.8	5.3	0.1	2.5	3.8	5.3
66	6.8	2.8	4.1	5.7	0.1	2.8	4.1	5.7
72	7.5	3.0	4.5	6.3	0.1	3.0	4.5	6.3
78	7.5	3.3	4.9	6.7	0.1	3.3	4.9	6.7
84	8.0	3.5	5.3	7.2	0.1	3.5	5.3	7.2
90	8.5	3.8	5.6	7.7	0.1	3.8	5.6	7.7
96	9.0	4.0	6.0	8.2	0.1	4.0	6.0	8.2

TABLES OF DIMENSIONS AND QUANTITIES

I.D. (IN.)	EARTH				ROCK			
	G (FT.)	THRUST (TONS)	A (FT.)	B (FT.)	G (FT.)	THRUST (TONS)	A (FT.)	B (FT.)
4,6,8	0.4	1.0	1.0	1.5	0.1	1.0	1.0	0.1
10,12	0.6	2.2	1.5	1.5	0.1	1.0	1.5	0.1
16,18	0.8	5.0	2.0	2.5	0.3	1.5	2.0	0.2
20	0.9	6.2	2.0	3.5	0.4	1.5	3.0	0.3
24	1.1	8.9	3.0	3.5	0.5	1.5	3.0	0.3
30	1.4	10.4	3.0	3.5	0.6	2.0	3.5	0.4
36	1.7	15.0	3.5	4.5	0.9	2.0	4.0	0.5
42	1.9	20.4	4.5	5.0	1.2	2.5	5.0	0.8
48	2.2	26.6	4.5	6.0	2.0	2.5	6.0	1.1
54	2.5	33.7	6.0	6.0	3.0	3.0	6.0	1.4
60	2.7	41.6	6.0	7.0	3.8	3.0	7.0	1.8
66	3.0	50.3	6.5	8.0	5.1	3.5	8.0	2.7
72	3.3	59.9	7.5	8.0	6.3	4.0	8.0	3.3
78	3.6	70.2	8.0	9.0	8.1	4.0	9.0	3.9
84	3.8	81.5	8.5	10.0	10.3	4.5	10.0	5.3
90	4.1	93.5	9.5	10.0	12.2	5.0	10.0	6.0
96	4.4	106.4	10.0	11.0	15.0	5.0	11.0	7.4

TABLES OF DIMENSIONS AND QUANTITIES

I.D. (IN.)	EARTH				ROCK			
	G (FT.)	THRUST (TONS)	A (FT.)	B (FT.)	G (FT.)	THRUST (TONS)	A (FT.)	B (FT.)
4,6,8	1.0	2.6	2.0	1.5	0.2	1.0	1.5	0.1
10,12	1.5	5.9	2.5	2.5	0.3	2.0	1.5	0.2
16,18	2.2	13.2	3.5	4.0	0.8	2.5	3.0	0.4
20	2.4	16.3	4.5	4.0	1.0	3.0	3.0	0.5
24	2.9	23.4	6.0	4.0	1.4	3.5	0.7	2.4
30	3.6	27.5	6.5	5.0	1.9	3.5	4.0	0.9
36	4.4	39.5	7.0	6.0	3.4	4.5	4.5	1.6
42	5.1	53.8	8.0	7.0	5.1	5.5	2.5	4.2
48	5.8	70.3	9.0	8.0	7.4	6.0	3.7	4.8
54	6.5	89.0	10.0	9.0	10.3	7.0	6.5	5.4
60	7.3	110.0	11.0	10.0	13.9	7.5	7.3	6.0
66	8.0	132.9	12.5	11.0	18.9	8.5	8.0	6.6
72	8.7	158.2	13.5	12.0	24.0	9.0	9.0	7.2
78	9.4	185.6	14.5	13.0	30.0	10.0	9.5	7.8
84	10.1	215.3	15.5	14.0	37.1	10.5	10.5	8.4
90	10.9	247.1	16.5	15.0	45.0	11.5	11.0	9.0
96	11.6	281.2	18.0	16.0	55.5	12.5	11.5	9.6

TABLES OF DIMENSIONS AND QUANTITIES

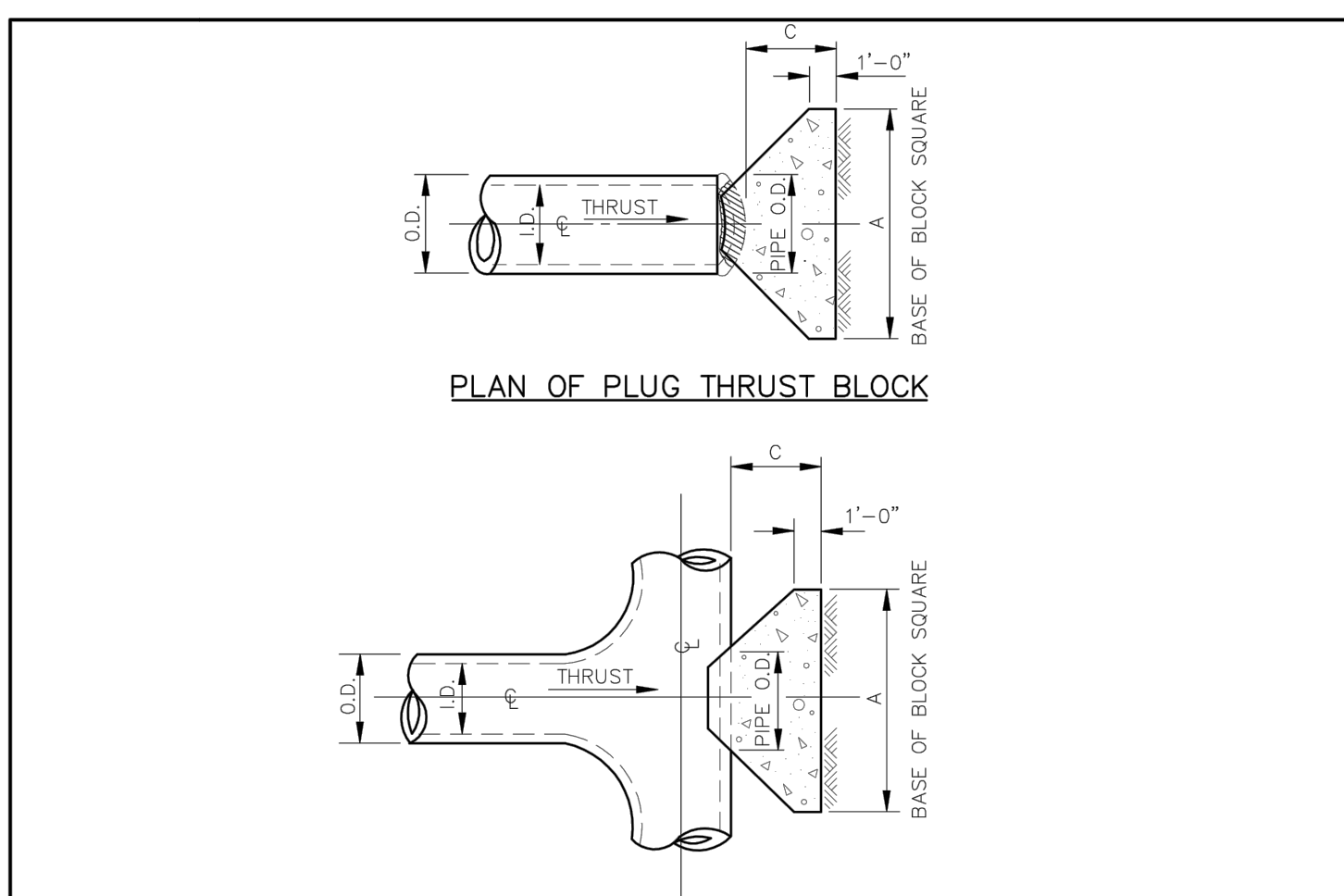
I.D. (IN.)	EARTH				ROCK			
	G (FT.)	THRUST (TONS)	A (FT.)	B (FT.)	G (FT.)	THRUST (TONS)	A (FT.)	B (FT.)
4,6,8	2.1	5.6	3.0	2.0	0.3	2.0	1.5	0.2
10,12	3.1	12.6	5.5	2.5	0.8	3.5	2.0	0.4
16,18	4.7	28.3	7.5	4.0	1.9	5.5	3.0	0.9
20	5.2	34.9	9.0	4.0	2.3	5.5	3.5	1.2
24	6.2	50.3	11.5	4.5	3.5	6.5	4.0	1.6
30	7.8	58.9	12.0	5.0	4.8	7.5	4.0	2.2
36	9.4	84.9	14.5	6.0	8.2	9.5	4.5	3.8
42	10.9	115.5	17.0	7.0	12.8	11.0	5.5	4.2
48	12.5	150.9	19.0	8.0	18.4	13.0	6.0	4.8
54	14.0	191.0	21.5	9.0	26.0	15.0	6.5	5.4
60	15.6	235.8	24.0	10.0	35.6	16.0	7.5	6.0
66	17.1	285.3	26.0	11.0	46.0	18.0	8.0	6.6
72	18.7	339.5	28.5	12.0	57.8	19.0	9.0	7.2
78	20.2	398.5	31.0	13.0	75.2	21.0	9.5	7.8
84	21.8	462.1	33.5	14.0	94.7	22.0	10.5	8.4
90	23.3	530.5	35.5	15.0	114.4	24.0	11.0	9.0
96	24.9	603.6	38.0	16.0	138.9	25.5	12.0	9.6

C91 WATER CONNECTION DETAIL
NOT TO SCALE

C92 THRUST BLOCKING DETAIL
NOT TO SCALE

C93 THRUST BLOCKING DETAIL
NOT TO SCALE

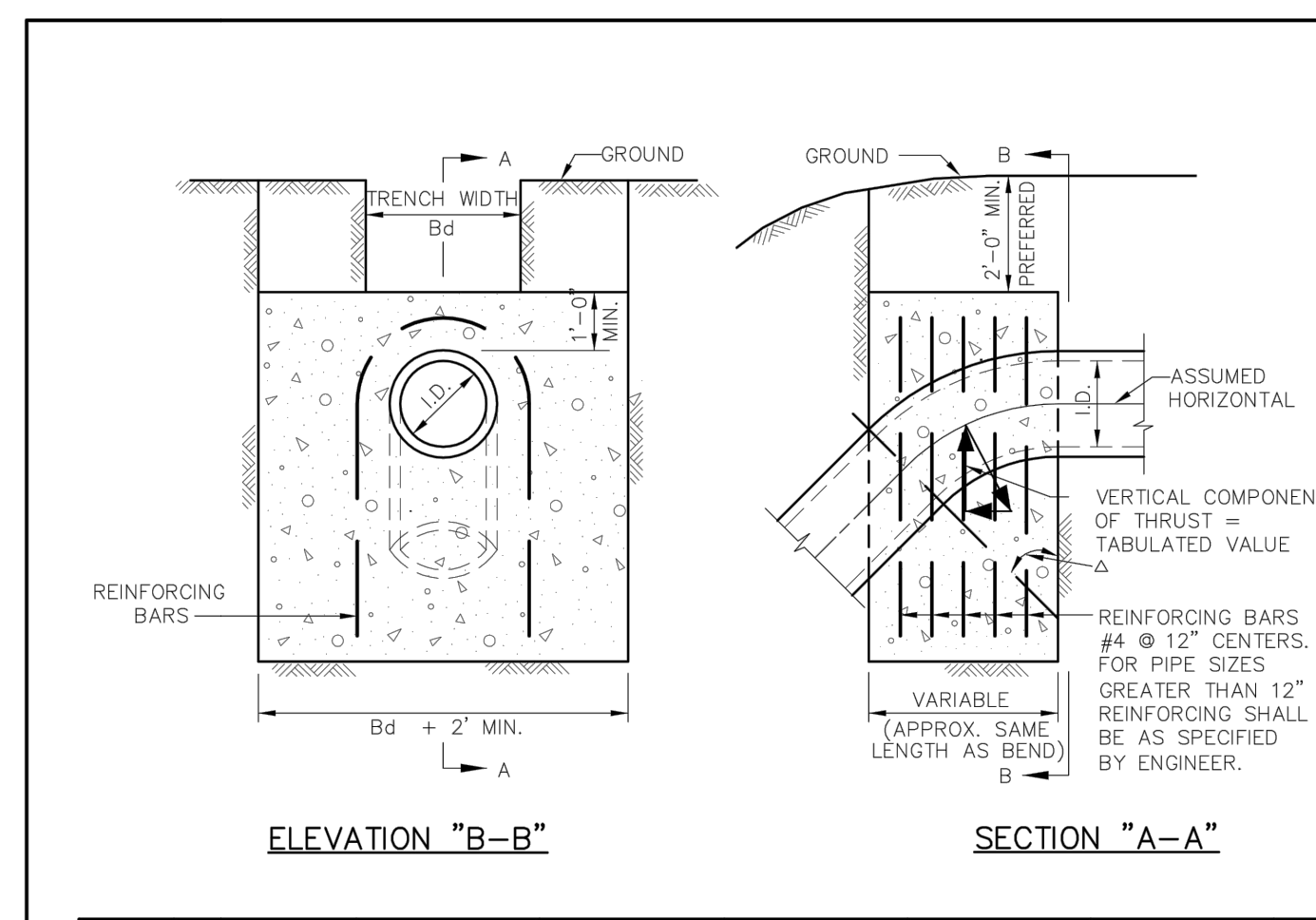
C94 THRUST BLOCKING DETAIL
NOT TO SCALE



TABLES OF DIMENSIONS AND QUANTITIES

I.D. (IN.)	EARTH				ROCK			
	THRUST (TONS)	C (FT.)	A (FT.)	B (FT.)	THRUST (TONS)	C (FT.)	A (FT.)	B (FT.)
4,6,8	5.1	1.5	2.5	0.3	2.0	0.2		
10,12	11.3	1.5	3.5	0.6	2.5	0.3		
16,18	25.5	2.0	5.5	1.6	4.0	0.9		
20	31.5	2.0	6.0	1.9	4.0	0.9		
24	45.2	2.5	7.0	3.1	5.0	1.7		
30	53.0	3.0	7.5	4.1	5.5	2.4		
36	76.3	4.0	9.0	7.3	6.5	4.2		
42	104.0	4.5	10.5	11.0	7.5	6.2		
48	136.0	5.0	12.0	15.6	8.5	8.7		

C95 THRUST BLOCKING DETAIL
NOT TO SCALE



VERTICAL THRUST BLOCK

I.D. (IN.)	11.25'				22.50'				30'				45'				67.50'				90'			
	THRUST (TONS)	VOL. (C.Y.)	THRUST (TONS)	VOL. (C.Y.)	THRUST (TONS)	VOL. (C.Y.)	THRUST (TONS)	VOL. (C.Y.)	THRUST (TONS)	VOL. (C.Y.)	THRUST (TONS)	VOL. (C.Y.)	THRUST (TONS)	VOL. (C.Y.)	THRUST (TONS)	VOL. (C.Y.)	THRUST (TONS)	VOL. (C.Y.)	THRUST (TONS)	VOL. (C.Y.)	THRUST (TONS)	VOL. (C.Y.)		
4,6,8	1.0	0.5	2.0	1.0	2.5	1.3	3.6	1.8	4.6	2.3	5.0	2.5	4,6,8	1.0	0.5	2.0	1.0	2.5	1.3	3.6	1.8	4.6		
10,12	2.2	1.1	4.3	2.2	5.7	2.8	8.0	4.0	10.5	5.2	11.3	5.7	10,12	2.2	1.1	4.3	2.2	5.7	2.8	8.0	4.0	10.5		
16,18	5.0	2.5	9.7	4.9	12.7	6.4	18.0	9.0	23.5	11.8	25.5	12.7	16,18	5.0	2.5	9.7	4.9	12.7	6.4	18.0	9.0	23.5		
20	6.1	3.1	12.0	6.0	15.7	7.9	22.2	11.1	29.2	14.5	31.4	15.7	20	6.1										