

owners  
**CAWLEY PARTNERS**  
17330 Preston Road, Suite 250B  
Dallas, TX 75252  
972.759.7700

mep engineer  
**PURDY MCGUIRE**  
17300 Dallas Parkway, Suite 3000  
Dallas, TX 75248  
972.239.5357

structural engineer  
**L.A. FUESS PARTNERS, INC.**  
3333 Lee Parkway, Suite 300  
Dallas, TX 75219  
214.871.7010

civil engineer  
**WALTER P MOORE**  
1845 Woodall Rodgers Fwy, Suite  
D888, Dallas, TX 75201  
214.620.6200

landscape architect  
**BELLE FIRMA**  
4245 North Central Expy, Suite 501  
Dallas, TX 75219  
214.865.7192

project  
**CAWLEY TOLLWAY CENTER**  
14300 Dallas Parkway  
Addison, TX 75254

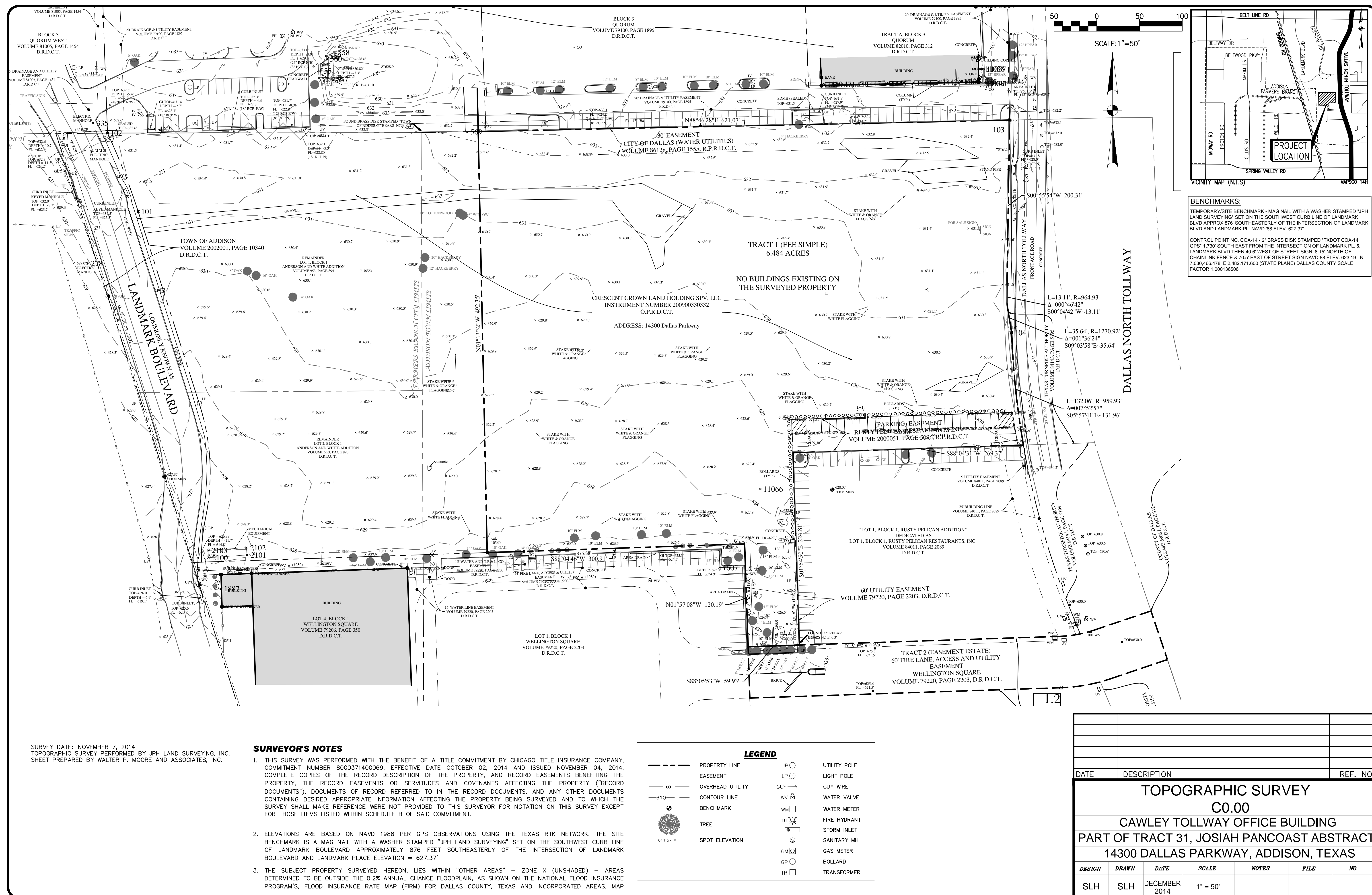
The drawings and written material herein constitute original work of the architect, and as intellectual property and instruments of service, are subject to copyright and may not be reproduced, distributed, published or used in any way without the express written consent of the architect.

original issue  
**BUILDING PERMIT** 12.18.2014  
revisions

title  
**TOPOGRAPHIC SURVEY**

project number 14067.100  
date 12.18.2014  
sheet

**CO.00**



P:\COA\2014\14010-00\COA\Sheet\14010-00\_SV.dwg

2014-01-01

plotted: 12/18/2014 5:47:00 PM