

owners  
**CRAWLEY PARTNERS**  
 16400 North Dallas Parkway, Suite 150  
 Dallas, TX 75248  
 972.759.7700

mep engineer  
**PURDY MCGUIRE**  
 17300 Dallas Parkway, Suite 3000  
 Dallas, TX 75248  
 972.239.5357

structural engineer  
**L.A. FUESS PARTNERS, INC.**  
 3333 Lee Parkway, Suite 300  
 Dallas, TX 75219  
 214.871.7010

civil engineer  
**WALTER P MOORE**  
 1845 Woodall Rodgers Fwy, Suite  
 0808, TX 75201  
 214.740.6200

landscape architect  
**BELLE FIRMA**  
 4245 North Central Expy, Suite 501  
 Dallas, TX 75205  
 214.865.7192

project  
**CRAWLEY TOLLWAY CENTER**  
 14675 Dallas Parkway  
 Addison, TX 75254

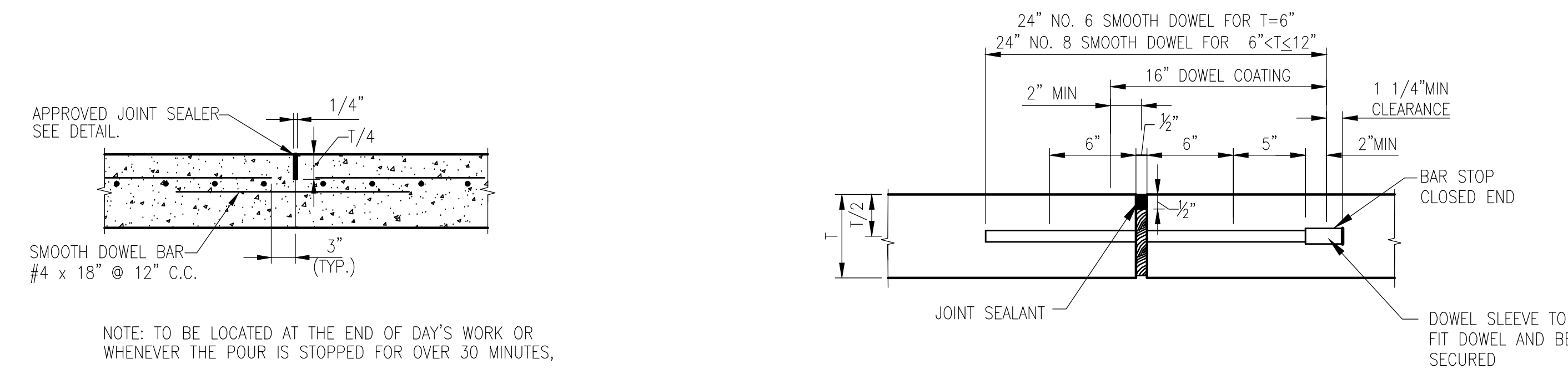
The drawings and written material herein constitute original work of the architect, and as intellectual property and instruments of service, are subject to copyright and may not be reproduced, distributed, published or used in any way without the express written consent of the architect.

<b>BUILDING PERMIT</b>	<b>12.18.2014</b>
revisions	
ADDENDUM #1	01.27.2015
WCPR #1	04.08.2015

04-08-15		WCPR #1		
01-27-15		ADDENDUM #1		
DATE	DESCRIPTION		REF. NO.	
<b>PRIVATE CIVIL DETAILS</b>				
<b>C9.01</b>				
<b>CRAWLEY TOLLWAY OFFICE BUILDING</b>				
<b>PART OF TRACT 31, JOSIAH PANCOAST ABSTRACT</b>				
<b>14675 DALLAS PARKWAY, ADDISON, TEXAS</b>				
DESIGN	DRAWN	DATE	SCALE	NOTES FILE NO.
SLH	SLH	APRIL 2015		14-11

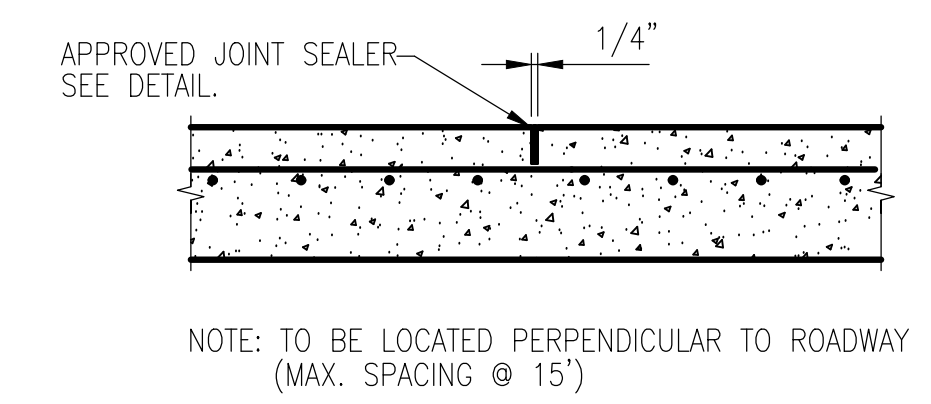
Walter P. Moore and Associates, Inc.  
 TBPE Firm Registration No. 1856

**WALTER P MOORE**  
 WALTER P. MOORE AND ASSOCIATES, INC.  
 1845 WOODALL RODGERS FREEWAY, SUITE 1650  
 DALLAS, TEXAS 75201-2290  
 TBPE FIRM REGISTRATION NO. 1856  
 PHONE: 214.740.6200 FAX: 214.740.6300

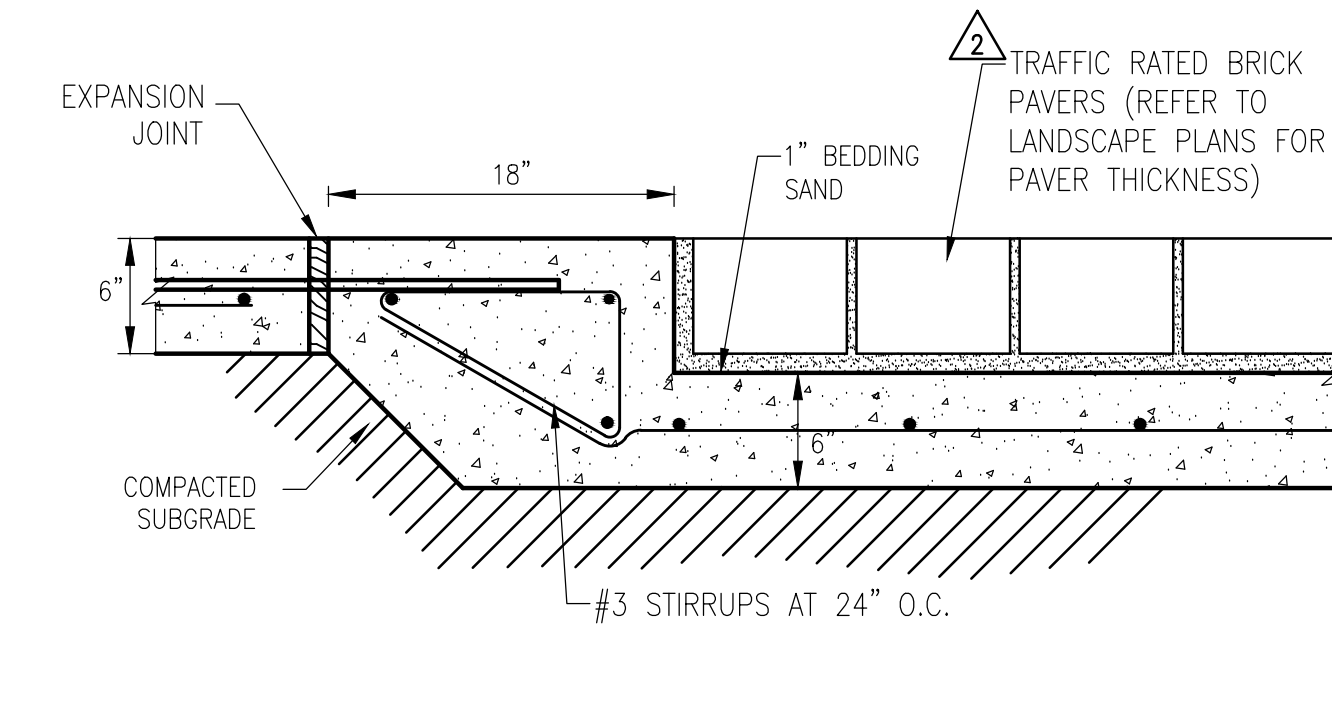


**CONCRETE CONSTRUCTION JOINT**  
 NOT TO SCALE

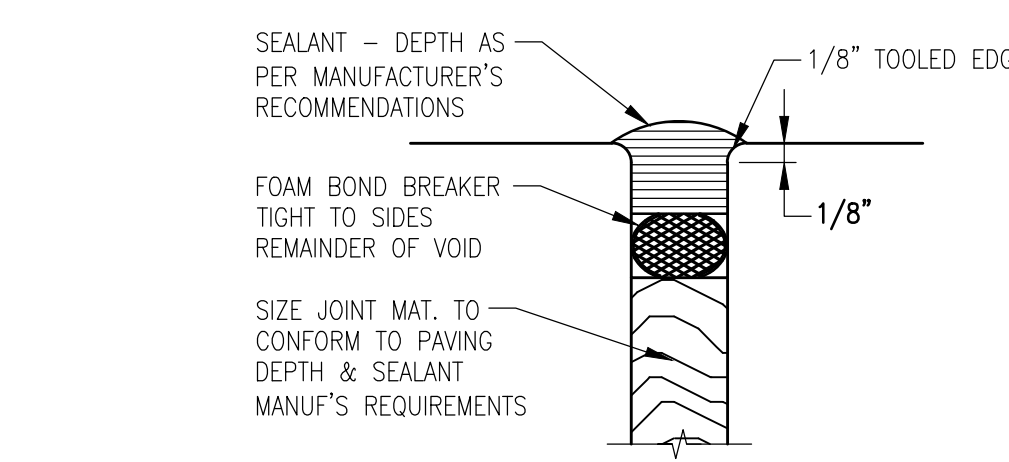
**CONCRETE EXPANSION JOINT**  
 NOT TO SCALE



**PAVEMENT CONTROL JOINT**  
 NOT TO SCALE



**PAVEMENT AT CONCRETE PAVERS**  
 NOT TO SCALE



**PRIVATE PAVING SEALANT JOINT**  
 NOT TO SCALE

MODEL #	CATCH BASIN	JUNCTION BOX	W1	W2	H1	H2	T1	KO	GRATE SIZE	WEIGHT (BS)
CB12	JB12	15"	10"	21"	18"	2"	10"	12"	12"x12"	180
CB14	JB14	20"	14"	28"	24"	4"	12"	14"x14"	119"	600
CB18	JB18	24"	16"	34"	30"	4"	15"	18"x18"	119"	1,000
CB20	JB20	28"	18"	34"	30"	4"	17"	20"x20"	119"	1,335
CB24	JB24	32"	22"	41"	36"	5"	22"	24"x24"	12"	2,245
CB27	JB27	35"	25"	42"	36"	6"	24"	27"x27"	12"	2,875
CB30	JB30	42"	30"	42"	36"	6"	30"	30"x30"	12"	3,875
CB36	JB36	48"	36"	42"	36"	6"	32"	36"x36"	12"	4,585

**SPECIFICATIONS**  
 CONCRETE: Class I concrete with design strength of 4500 PSI at 28 days. Unit is of monolithic construction at floor and first slope of wall with sectional riser to required depth.  
 REINFORCEMENT: Grade 60 reinforced. Steel rebar conforming to ASTM A615 on required centers or equal.  
 C.I. CASTINGS: Cast iron frames and grates are manufactured of grey cast iron conforming to ASTM A48-76 Class 35.

**PARK ENVIRONMENTAL** 888-611-PARK  
 "Expect the Best!"  
 CATCH-BASIN MODEL CB - 12" THRU 36"  
 JUNCTION BOX MODEL JB - 12" THRU 36"  
 SCALE: NONE DWS NO. REV. DATE: 4-2012 CBJB36 A

**AREA DRAIN**  
 NOT TO SCALE

**NYLOPLAST 15" DRAIN BASIN: 2815AG \_\_ X**

(1, 2) INTEGRATED DUCTILE IRON FRAME & GRATE TO MATCH BASIN O.D.  
 (3) VARIABLE INVERT HEIGHTS AVAILABLE (ACCORDING TO PLAN/STAKE OFF)  
 (4) VARIOUS TYPES OF INLET & OUTLET ADAPTERS AVAILABLE:  
 4" - 15" FOR CORRUGATED HOPE (ABS N-10 HANCOR RIVAL WALL, ADOXMANOR SINGLE WALL N-12 HP, PVC SEWER (EX. SDR 35), PVC DWV (EX. SCH 40), PVC CR90/C95, CORRUGATED & RIBBED PVC  
 (5) ADAPTER ANGLES VARIABLE 0° - 30° ACCORDING TO PLANS  
 (6) VARIABLE SUMP DEPTH ACCORDING TO PLANS (8" MIN. BASED ON MANUFACTURING REQ.)

1 - GRATES/SLID COVER SHALL BE DUCTILE IRON PER ASTM A536 GRADE 10-50-05, WITH THE EXCEPTION OF THE BRIDGE GRATE.  
 2 - FRAMES SHALL BE DUCTILE IRON PER ASTM A536 GRADE 10-50-05. RISERS ARE NECESSARY FOR BASIN COVER BY DUE TO SHIPPING RESTRICTIONS. SEE DRAWING NO. 7001-10-06.  
 3 - DRAIN BASIN TO BE CUSTOM MANUFACTURED ACCORDING TO PLAN DETAILS.  
 4 - DRAINAGE CONNECTION FOR JOINT TIGHTNESS SHALL CONFORM TO ASTM D3212 FOR CORRUGATED HOPE (ABS N-10 HANCOR RIVAL WALL) N-12 HP & PVC SEWER.  
 5 - ADAPTERS CAN BE ADJUSTED ON ANY ANGLE 0° TO 30°, TO DETERMINE MINIMUM ANGLE BETWEEN ADAPTERS SEE DRAWING NO. 7001-10-02.

THE BACKFILL MATERIAL SHALL BE CRUSHED STONE OR OTHER GRANULAR MATERIAL MEETING THE REQUIREMENTS OF CLASS 3 MATERIAL AS DEFINED IN ASTM D2221. BEDDING & BACKFILL FOR SURFACE DRAINAGE INLETS SHALL BE PLACED & COMPACTED UNIFORMLY IN ACCORDANCE WITH ASTM D2221.

TRAFFIC LOADS: CONCRETE SLAB DIMENSIONS ARE FOR GUIDELINE PURPOSES ONLY. ACTUAL CONCRETE SLAB MUST BE DESIGNED TAKING INTO CONSIDERATION LOCAL SOIL CONDITIONS, TRAFFIC LOADING, & OTHER APPLICABLE DESIGN FACTORS. SEE DRAWING NO. 7001-110-11 FOR NON TRAFFIC INSTALLATION.

MINIMUM PIPE BURIAL DEPTH PER PIPE MANUFACTURER RECOMMENDATION (MIN. MANUFACTURING REQ. SAME AS MIN. SUMP)

18" MIN WIDTH GUIDELINE  
 8" MIN THICKNESS GUIDELINE

WATER TIGHT JOINT (CORRUGATED HOPE SHOWN)

3138 VERONA AVE  
 RICHARDSON, TX 75081  
 PHN (770) 932-2443  
 FAX (770) 932-4869  
 www.nyloplast-us.com

**Nyloplast**

THIS PRINT DISCLOSES SUBJECT MATTER IN WHICH NYLOPLAST HAS PROPRIETARY RIGHTS. THE RECEIPT OR POSSESSION OF THIS PRINT DOES NOT CONFER, TRANSFER OR LICENSE THE USE OF THE DESIGN OR TECHNICAL INFORMATION SHOWN HEREIN. REPRODUCTION OF THIS PRINT OR ANY INFORMATION CONTAINED HEREIN, OR MANUFACTURE OF ANY ARTICLE HEREFROM FOR THE DISCLOSURE TO OTHERS IS FORBIDDEN, EXCEPT BY SPECIFIC WRITTEN PERMISSION FROM NYLOPLAST. ©2011 NYLOPLAST

GRATE OPTIONS	LOAD RATING	PART #	DRAWING #
PEDESTRIAN	MEETS 1203	TS66C02	7001-10-0207
STANDARD	MEETS 1203	TS66C05	7001-10-0208
SOLID COVER	MEETS 1203	TS66C06	7001-10-0209
PEDESTRIAN BRIDGE	N/A	TS66C09	7001-10-0210
DRIVE	N/A	TS66C10	7001-10-0211
DROP IN GRATE	LIGHT DUTY	15010	7001-10-0212

DRAWN BY: EBC DATE: 3-24-06  
 REVISIONS: EBC PROJECT NO. NAME: 7001-10-199  
 DATE: 3-18-10 SCALE: 1/20 SHEET: 1 OF 1  
 DWG SIZE: A SCALE: 1/20 SHEET: 1 OF 1  
 DWS NO.: 7001-10-199 REV: C

**LANDSCAPE DRAIN**  
 NOT TO SCALE