

ADDISON, TEXAS

LINDBERGH DRIVE WATERLINE REPLACEMENT

(FROM MIDWAY RD. TO APPROXIMATELY 1,350 L.F. EAST)

R. SCOTT WHEELER
Mayor

GLYNDA TURNER
Mayor Pro-Tem

DIANE MALLORY
Councilman

BOB BARRETT
Councilman

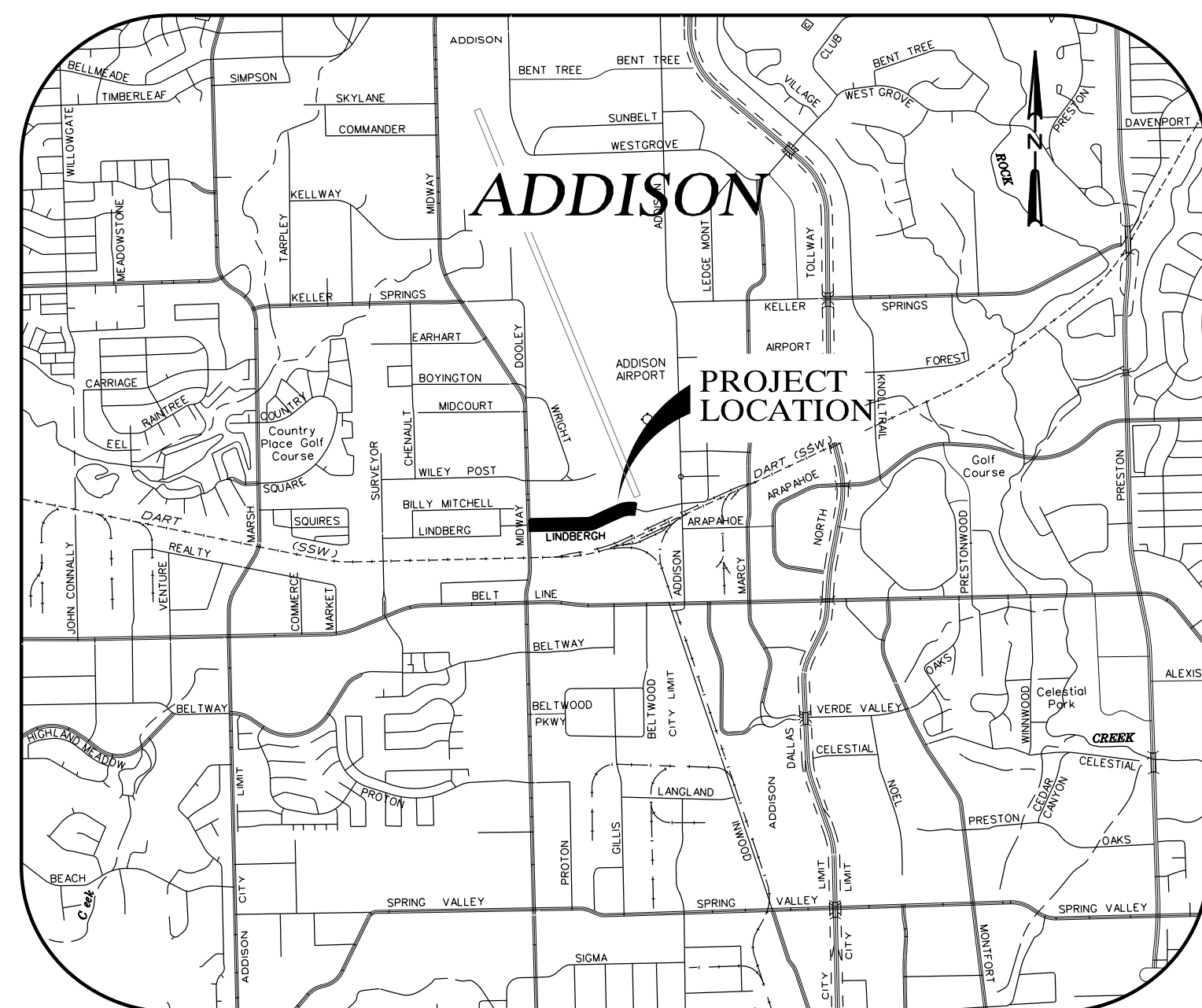
FRANK R. KLEIN
Councilman

FREDRICK M. SILVER
Councilman

RON WHITEHEAD
City Manager

CATHY WAYS
Deputy Mayor Pro-Tem

MIKE MURPHY
Director of Public Works



PROJECT LOCATION

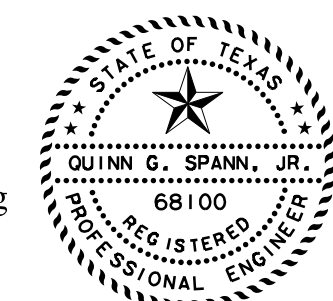
DECEMBER 2001



GUTIERREZ, SMOUSE, WILMUT & ASSOC., INC.
11117 SHADY TRAIL
DALLAS, TEXAS 75229
(972) 620-1255
DALLAS - FT. WORTH - HOUSTON - MIDLAND

SHEET 1	COVER SHEET
SHEET 2	GENERAL NOTES & MISCELLANEOUS DETAILS
SHEET 3	MISCELLANEOUS DETAILS
SHEET 4	TOWN OF ADDISON STD. DETAIL
SHEET 5	WATER PLAN, STA 1+00 TO STA 8+50
SHEET 6	WATER PLAN, STA 8+50 TO STA 15+22

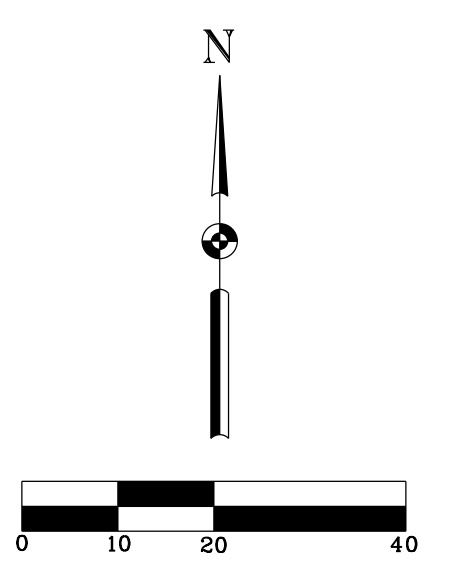
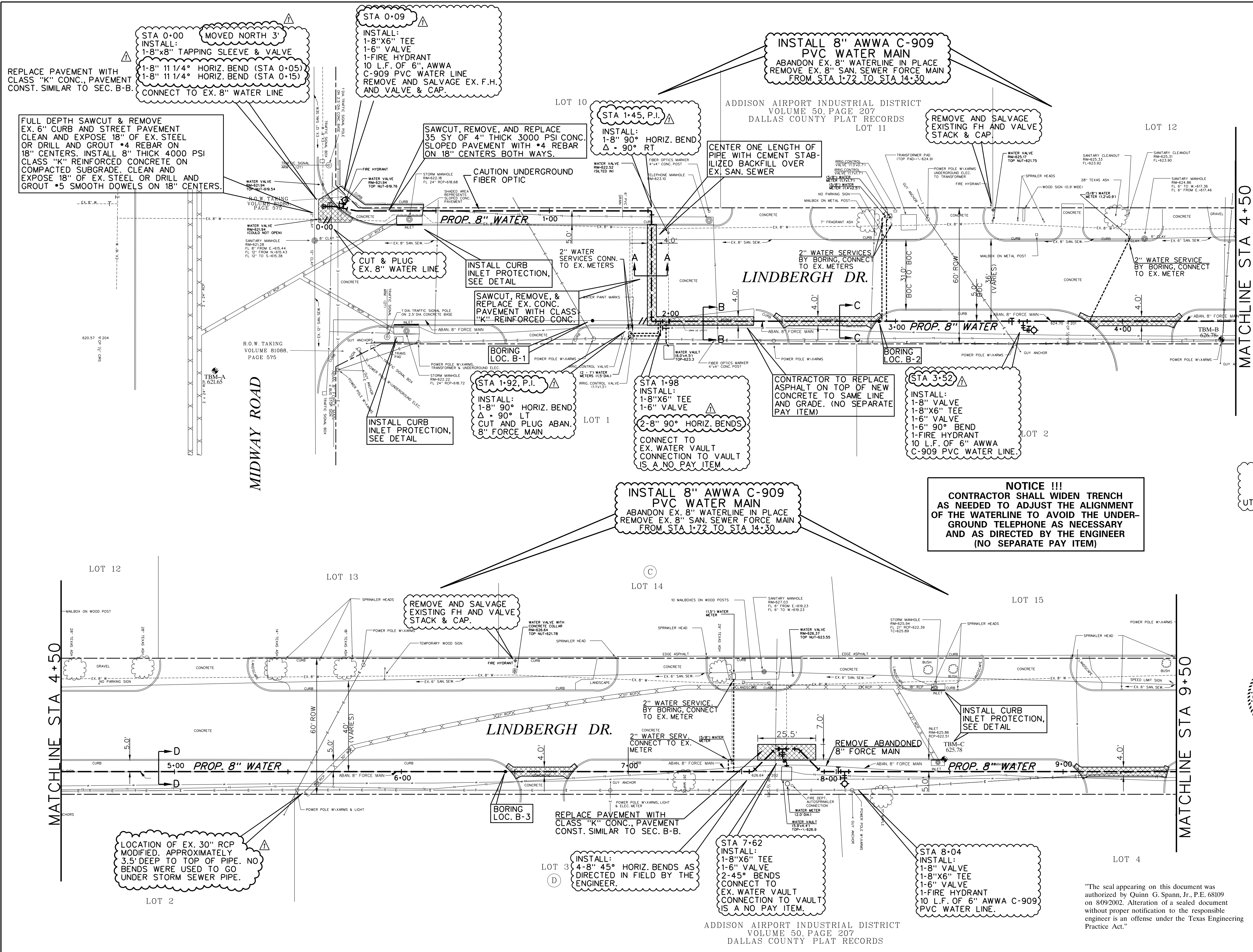
"The seal appearing on this document was authorized by Quinn G. Spann, Jr., P.E. 68109 on 8/09/2002. Alteration of a sealed document without proper notification to the responsible engineer is an offense under the Texas Engineering Practice Act."



SHEET 4 OF 6 IS NOT INCLUDED IN ELECTRONIC FILES. THIS SHEET IS NOT IN ELECTRONIC FORMAT.

RECORD DRAWING
The improvements shown on this drawing were prepared from periodic observations made by the Engineer, periodic observations made by the Project Representative, information provided by serial and/or on the ground surveys, information provided by the Owner and/or information provided by the General Contractor. To the best of our knowledge, the information provided herein represents the improvements as constructed.
DATE: 8/09/2002

INDEX OF SHEETS



- LEGEND**
- E - OVERHEAD ELECTRIC
 - EA - EDGE ASPHALT
 - FO - FIBER OPTICS
 - G - GROUND
 - GB - GRADE BREAK
 - GU - GUTTER
 - T - OVERHEAD TELEPHONE
 - TC - TOP OF CURB
 - UE - UNDERGROUND ELECTRIC
 - UG - UNDERGROUND GAS
 - UT - UNDERGROUND TELEPHONE
 - US - UNDERGROUND SANITARY SEWER
 - UW - UNDERGROUND WATER
 - XARMS - CROSSARMS
 - - - - - PROPOSED WATER MAIN
 - ▨ - PAVEMENT REPLACEMENT
 - ▩ - PAVEMENT REPLACEMENT WITH CLASS "K" CONCRETE

CAUTION !!
EXISTING GAS SERVICES ARE PRESENT, LOCATION NOT KNOWN

NOTICE !!
THE CONTRACTOR SHALL PRESERVE AND PROTECT EXISTING DRIVEWAYS AT ALL TIMES DURING CONSTRUCTION.

NOTICE !!
THE CONTRACTOR SHALL MAINTAIN WATER SERVICE AT ALL TIMES DURING CONSTRUCTION.

NOTICE !!!
CONTRACTOR SHALL WIDEN TRENCH AS NEEDED TO ADJUST THE ALIGNMENT OF THE WATERLINE TO AVOID THE UNDERGROUND TELEPHONE AS NECESSARY AND AS DIRECTED BY THE ENGINEER (NO SEPARATE PAY ITEM)

NOTICE !!
THE CONTRACTOR SHALL TAKE THE NECESSARY PRECAUTIONS TO PROTECT ALL OVERHEAD UTILITIES FROM DAMAGE. REPAIR OF DAMAGED UTILITIES WILL AT THE CONTRACTOR'S OWN EXPENSE.

BENCHMARKS:

BM#12 = SQUARE CUT ON HEADWALL NORTH OF RAILROAD, EAST SIDE OF MIDWAY (SOURCE: DATUM, TOWN OF ADDISON BENCHMARKS). ELEV. = 617.77

BM#15 = SQUARE CUT ON INLET NE CORNER MIDWAY & WILEY POST. (SOURCE: DATUM, TOWN OF ADDISON BENCHMARKS). ELEV. = 631.48

TBM-A = SQUARE CUT ON TOP OF CURB ON MEDIAN NOSE SOUTH SIDE OF INTERSECTION OF LINDBERGH AND MIDWAY. ELEV. = 621.65

TBM-B = RAILROAD SPIKE IN POWER POLE ON SOUTH SIDE OF LINDBERGH APPROXIMATELY 44' EAST OF CENTERLINE MIDWAY. ELEV. = 626.78

TBM-C = SQUARE CUT AT NORTHEAST CORNER OF CURB INLET ON SOUTH SIDE OF LINDBERGH ACROSS FROM #4311 LINDBERGH (MIDWAY PRESS, INC.). ELEV. = 625.78

RECORD DRAWING

The improvements shown on this drawing were prepared from periodic observations made by the Engineer, periodic observations made by the Project Representative, information provided by aerial and/or on the ground surveys, information provided by the Owner and/or information provided by the General Contractor. To the best of our knowledge, the information provided herein represents the improvements as constructed.

DATE: 8/09/2002

REVISION NO.	DESCRIPTION	BY	DATE
1	Misc. Construction Revisions	OGS	8/09/2002

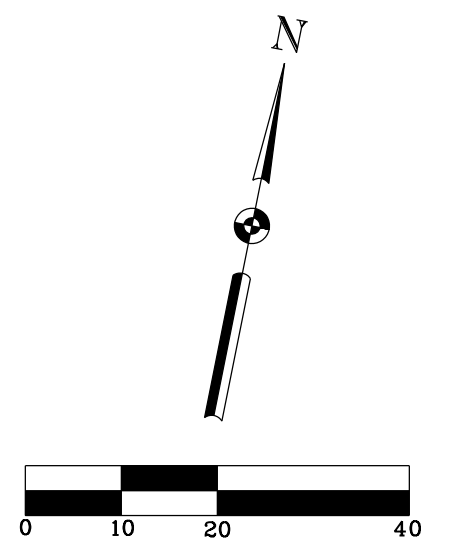
TOWN OF ADDISON, TEXAS
ENGINEERING DEPARTMENT

DESIGN: GSW		SCALE: H: 1" = 20'
DRAWN: GSW		SHEET
APPROVED: OGS		5 OF 6
DATE: DEC. 2001		

"The seal appearing on this document was authorized by Quinn G. Spann, Jr., P.E. 68109 on 8/09/2002. Alteration of a sealed document without proper notification to the responsible engineer is an offense under the Texas Engineering Practice Act."

Plt. Driver: DPW, dt
 Date: December 14, 2001 \$TIMES
 Project: Town of Addison "Lindbergh Dr. Waterline Replacement"

- LEGEND
- E - OVERHEAD ELECTRIC
 - EA - EDGE ASPHALT
 - FO - FIBER OPTICS
 - G - GROUND
 - GB - GRADE BREAK
 - GU - GUTTER
 - T - OVERHEAD TELEPHONE
 - TC - TOP OF CURB
 - UE - UNDERGROUND ELECTRIC
 - UG - UNDERGROUND GAS
 - UT - UNDERGROUND TELEPHONE
 - US - UNDERGROUND SAN. SEWER
 - UW - UNDERGROUND WATER
 - XARMS - CROSSARMS
 - - - PROPOSED WATER MAIN
 - ▨ PAVEMENT REPLACEMENT
 - ▨ PAVEMENT REPLACEMENT WITH CLASS "K" CONCRETE



INSTALL 8" AWWA C-909 PVC WATER MAIN
 ABANDON EX. 8" WATERLINE IN PLACE
 REMOVE EX. 8" SAN. SEWER FORCE MAIN
 FROM STA 1+72 TO STA 14+30

CONTRACTOR TO TAKE ALL NECESSARY PRECAUTIONS TO KEEP SERVICE LINE OUT OF TREE DRIPLINE

REMOVE AND SALVAGE EXISTING FH AND VALVE STACK & CAP.

CUT & PLUG EX. 8" WATER LINE

STA 15+36
 CONNECT TO EX. 8" WATER
 INSTALL:
 1-8" X 8" TAPPING SLEEVE AND VALVE.

STA 15+19, P.I.
 INSTALL:
 1-8" 45° HORIZ. BEND
 Δ = 45° LT

CAUTION !!!
 THE CONTINUATION OF THE 6" SAN. SEWER IS NOT KNOWN BEYOND THIS POINT

CAUTION !!!
 EXACT LOCATION OF SAN. SEWER SERVICE CONNECTION NOT KNOWN

CONTRACTOR TO LOCATE FIBER OPTIC PRIOR TO SERVICE BEING BORED.

CUT & PLUG ABANDONED 8" FORCE MAIN

- BENCHMARKS:
- BM#12 = SQUARE CUT ON HEADWALL NORTH OF RAILROAD, EAST SIDE OF MIDWAY. (SOURCE DATUM, TOWN OF ADDISON BENCHMARKS). ELEV. = 617.77
 - BM#15 = SQUARE CUT ON INLET NE CORNER MIDWAY & WILEY POST. (SOURCE DATUM, TOWN OF ADDISON BENCHMARKS). ELEV. = 631.48
 - TBM-A = SQUARE CUT ON TOP OF CURB ON MEDIAN NOSE SOUTH SIDE OF INTERSECTION OF LINDBERGH AND MIDWAY. ELEV. = 621.65
 - TBM-B = RAILROAD SPIKE IN POWER POLE ON SOUTH SIDE OF LINDBERGH APPROXIMATELY 444' EAST OF CENTERLINE MIDWAY. ELEV. = 626.78
 - TBM-C = SQUARE CUT AT NORTHEAST CORNER OF CURB INLET ON SOUTH SIDE OF LINDBERGH ACROSS FROM #431 LINDBERGH (MIDWAY PRESS, INC.). ELEV. = 625.78

CURVE #2 DATA
 PC STA 12+51.5
 PT STA 14+29.6
 R = 309.0'
 Δ = 33.03°
 L = 178.1'
 T = 91.6'

STA 14+29.6 P.I.
 INSTALL:
 1-8" 90° HORIZ. BEND
 Δ = 90° LT

STA 12+66
 INSTALL:
 1-8" VALVE
 1-8" X 6" TEE
 1-6" VALVE
 1-FIRE HYDRANT
 10 L.F. OF 6" AWWA C-909 PVC WATERLINE

REMOVE EX. VAULT AND VAULT CONTENTS. (NO SEPARATE PAY ITEM FOR REMOVAL). PAYMENT FOR REMOVAL SHALL BE INCLUDED IN UNIT BID PRICE FOR NEW VAULT CONSTRUCTION.

STA 9+69.7 & 9+70.7
 INSTALL:
 2-45° HORIZ. BENDS
 CUT AND PLUG ABANDONED 8" FORCE MAIN

STA 10+40
 INSTALL:
 1-8" X 8" TEE
 1-8" VALVE
 CONSTRUCT NEW 8" FIRE VAULT PER STD DETAIL SHEET. CONNECT TO EX. 8" FIRELINE.

CONTRACTOR IS RESPONSIBLE FOR WORKING WITH UTILITY COMPANIES TO HAVE CONFLICTING UTILITIES ADJUSTED FOR NEW FIRE VAULT CONSTRUCTION. (NO SEPARATE PAY ITEM)

ADDISON AIRPORT INDUSTRIAL DISTRICT
 VOLUME 50, PAGE 207
 DALLAS COUNTY PLAT RECORDS

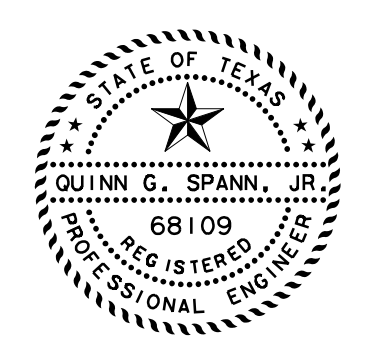
NOTICE !!!
 CONTRACTOR SHALL WIDEN TRENCH AS NEEDED TO ADJUST THE ALIGNMENT OF THE WATERLINE TO AVOID THE UNDERGROUND TELEPHONE AS NECESSARY AND AS DIRECTED BY THE ENGINEER (NO SEPARATE PAY ITEM)

CAUTION !!
 EXISTING GAS SERVICES ARE PRESENT, LOCATION NOT KNOWN

NOTICE !!
 THE CONTRACTOR SHALL PRESERVE AND PROTECT EXISTING DRIVEWAYS AT ALL TIMES DURING CONSTRUCTION.

NOTICE !!
 THE CONTRACTOR SHALL MAINTAIN WATER SERVICE AT ALL TIMES DURING CONSTRUCTION.

NOTICE !!
 THE CONTRACTOR SHALL TAKE THE NECESSARY PRECAUTIONS TO PROTECT ALL OVERHEAD UTILITIES FROM DAMAGE. REPAIR OF DAMAGED UTILITIES WILL AT THE CONTRACTOR'S OWN EXPENSE.



"The seal appearing on this document was authorized by Quinn G. Spann, Jr., P.E. 68109 on 8/09/2002. Alteration of a sealed document without proper notification to the responsible engineer is an offense under the Texas Engineering Practice Act."

RECORD DRAWING
 The improvements shown on this drawing were prepared from periodic observations made by the Engineer, periodic observations made by the Project Representative, information provided by aerial and/or on the ground surveys, information provided by the Owner and/or information provided by the General Contractor. To the best of our knowledge, the information provided herein represents the improvements as constructed.
 DATE: 8/09/2002

REVISION NO.	DESCRIPTION	BY	DATE
TOWN OF ADDISON, TEXAS ENGINEERING DEPARTMENT			
DESIGN:	GSW		
DRAWN:	GSW		
APPROVED:	QGS		
DATE:	DEC. 2001		
SCALE: H: 1" = 20'		SHEET	
		6 OF 6	

Plt Driver: DPW.plt
 Date: December 14, 2001 8:51 AM
 Project: Town of Addison "Lindbergh Dr. Waterline Replacement"