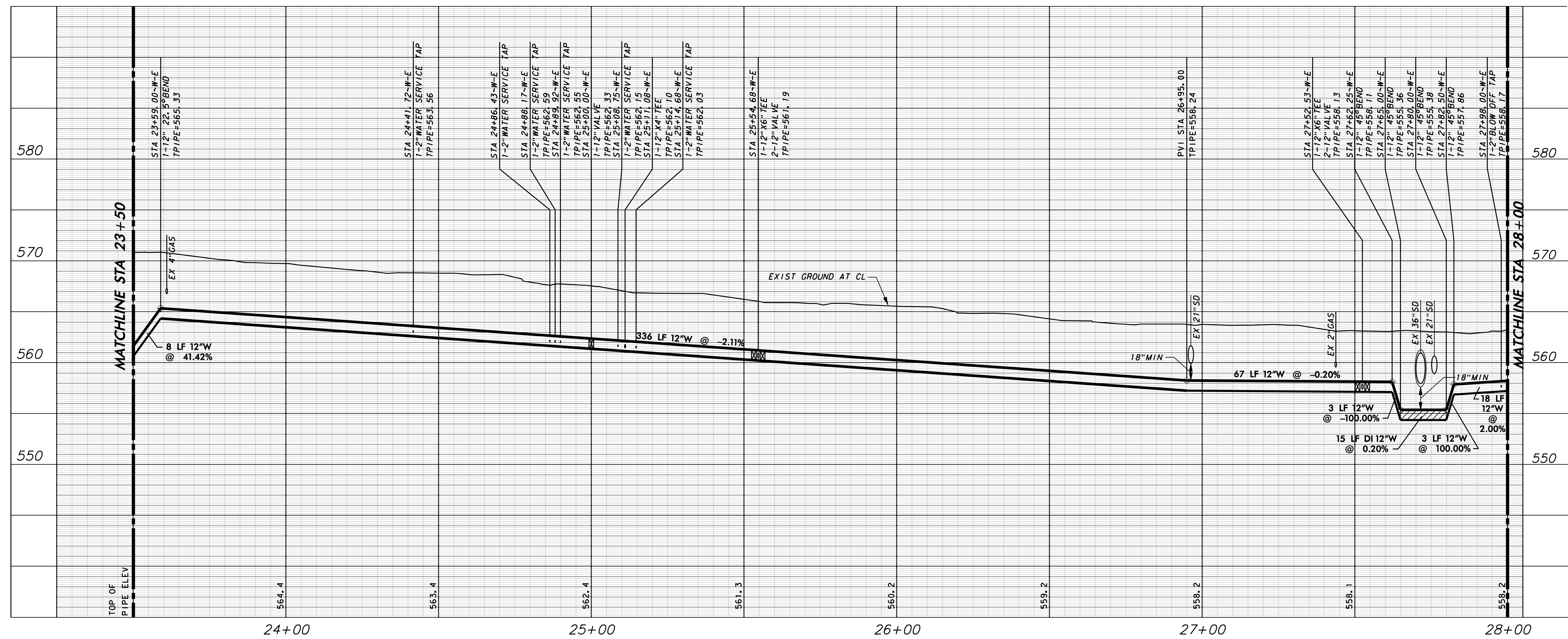
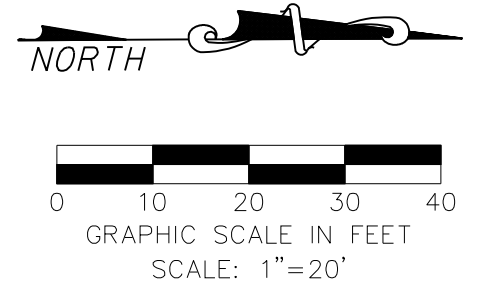


LEGEND

REMOVE & DISPOSE OF EXISTING PAVEMENT



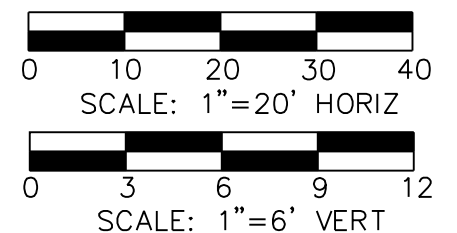
WARNING

CONTRACTOR IS TO CONTACT TEXAS ONE-CALL SYSTEM (1-800-245-4545) OR OTHER UTILITY LOCATING SERVICES AT LEAST 48 HOURS PRIOR TO CONSTRUCTION ACTIVITIES. ICON CONSULTING ENGINEERS, INC. IS NOT RESPONSIBLE FOR KNOWING ALL EXISTING UTILITIES IN THE PROJECT AREA NOR FOR DEPICTING THE EXACT LOCATIONS OF UTILITIES ON THESE DRAWINGS.

BM #1 REF. ELEVATION = 573.00
TOWN OF ADDISON MONUMENT NO. 1 BEING A DISK SET IN CONCRETE ON THE NORTH SIDE OF SPRING VALLEY ROAD, APPROX. 147 FEET EAST OF THE CENTERLINE OF MARSH LANE.

BM #2 REF. ELEVATION = 559.47
SQUARE CUT IN TOP OF CURB, SOUTH MEDIAN END NOSE, MARSH LANE 1127' NORTH OF VITRUVIAN WAY.

PROFILE SCALE:



NO.	REVISION	BY	DATE

icon Consulting Engineers, Inc. 2840 W. Southlake Blvd., Suite 110
Civil Engineers - Designers - Planners Southlake, TX 76092 (817) 552-6210
Engineering Firm Registration Number F-9007

WATER, SS & PAVING IMPROVEMENTS
VITRUVIAN PARK PUBLIC INFRASTRUCTURE BLOCK 500 A
TOWN OF ADDISON, TEXAS
WATER PLAN & PROFILE
LINE E - STA 23+50 TO 28+00

DESIGN	DRAWN	DATE	SCALE	NOTES	Sheet No.
ICE	ICE	JAN 22, 2020	AS NOTED		10

VITRUVIAN PARK BLOCK 500 A PUBLIC INFRASTRUCTURE - PROJECT NO. 5029-05