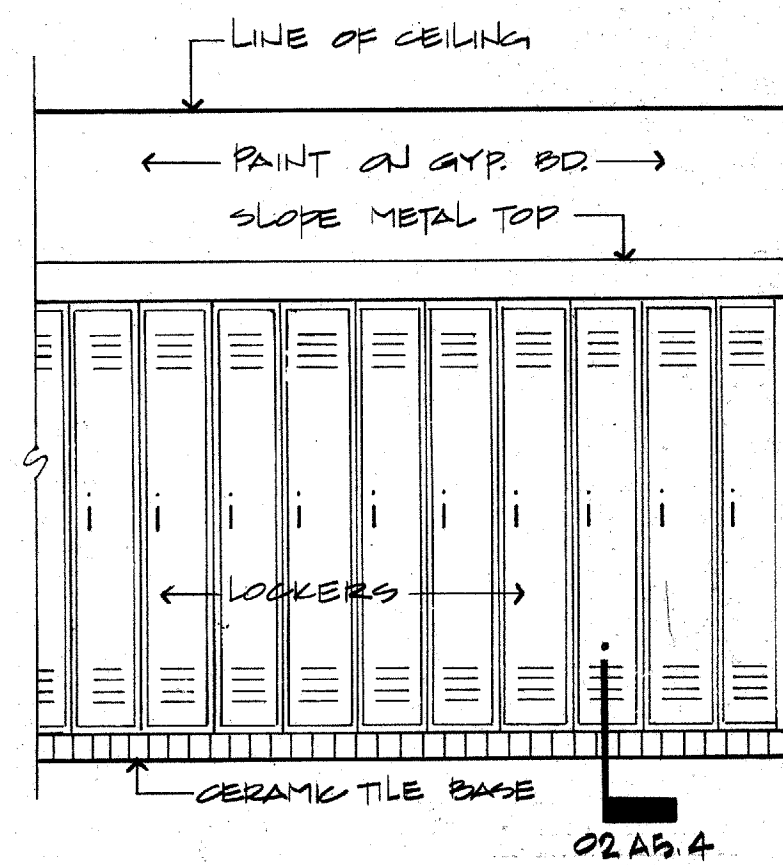
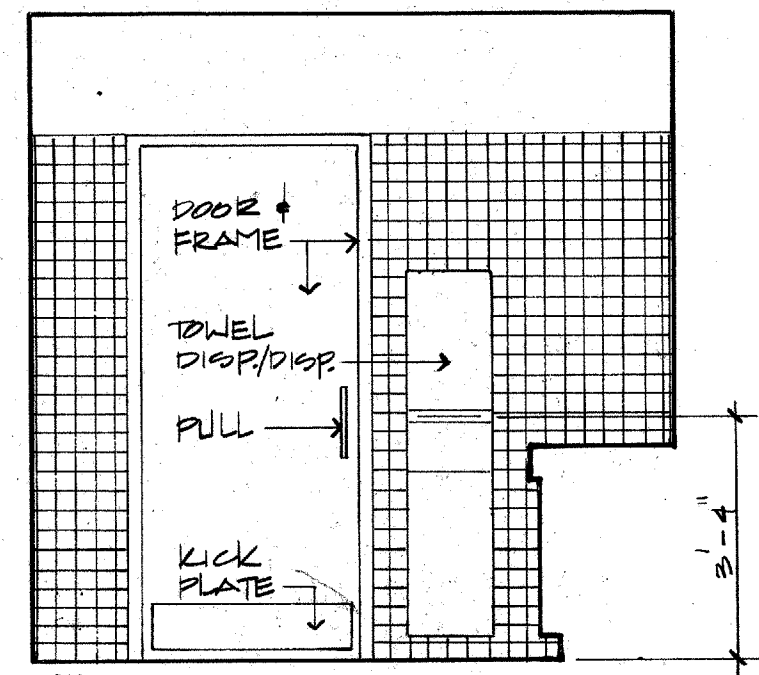


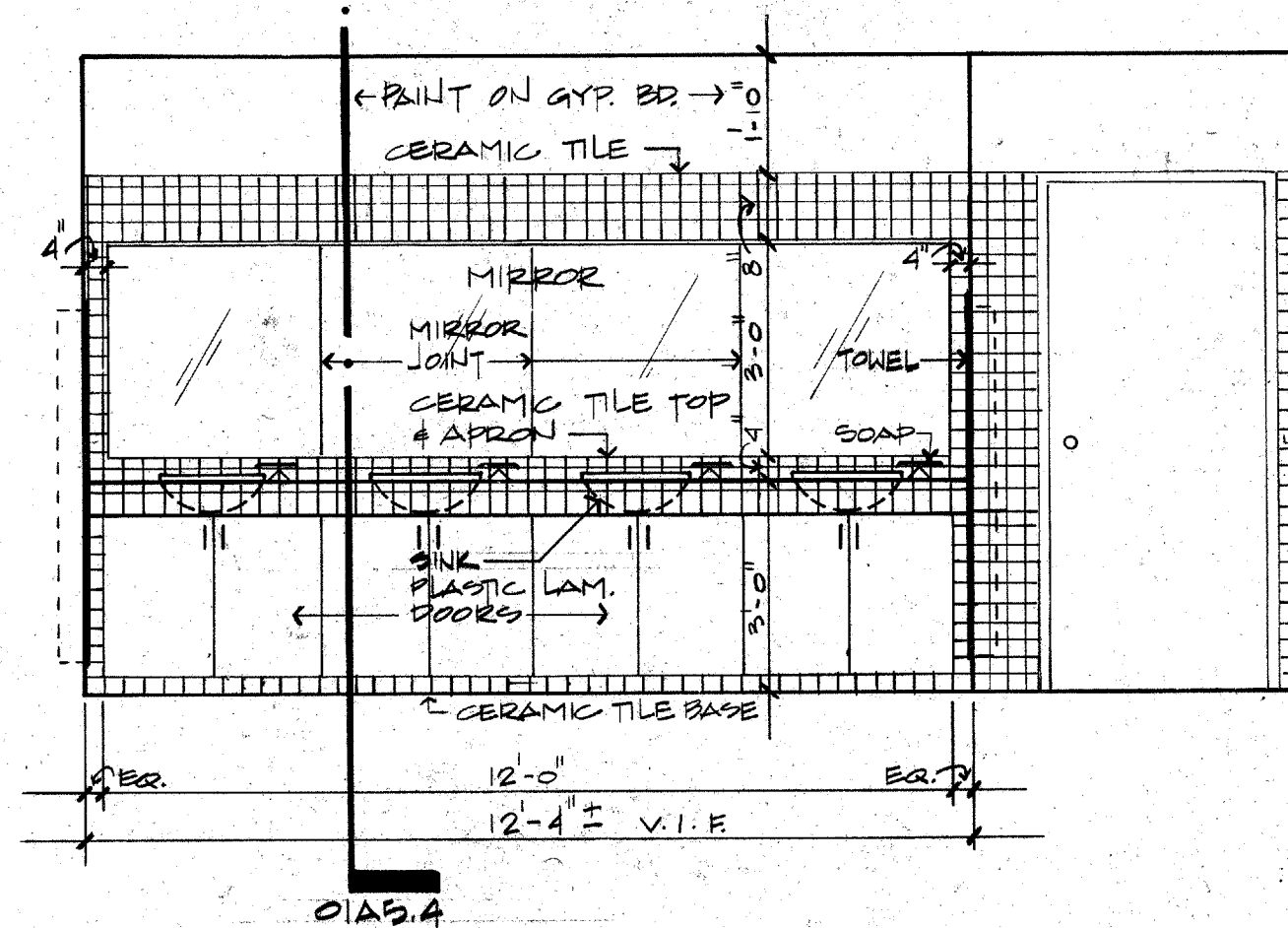
A B C D E F G H I J K L M N O P Q R S T U V W X Y Z AA BB CC DD EE EF GG HH II JJ KK LL MM NN OO PP QQ RR SS TT UU VV WW XX YY ZZ



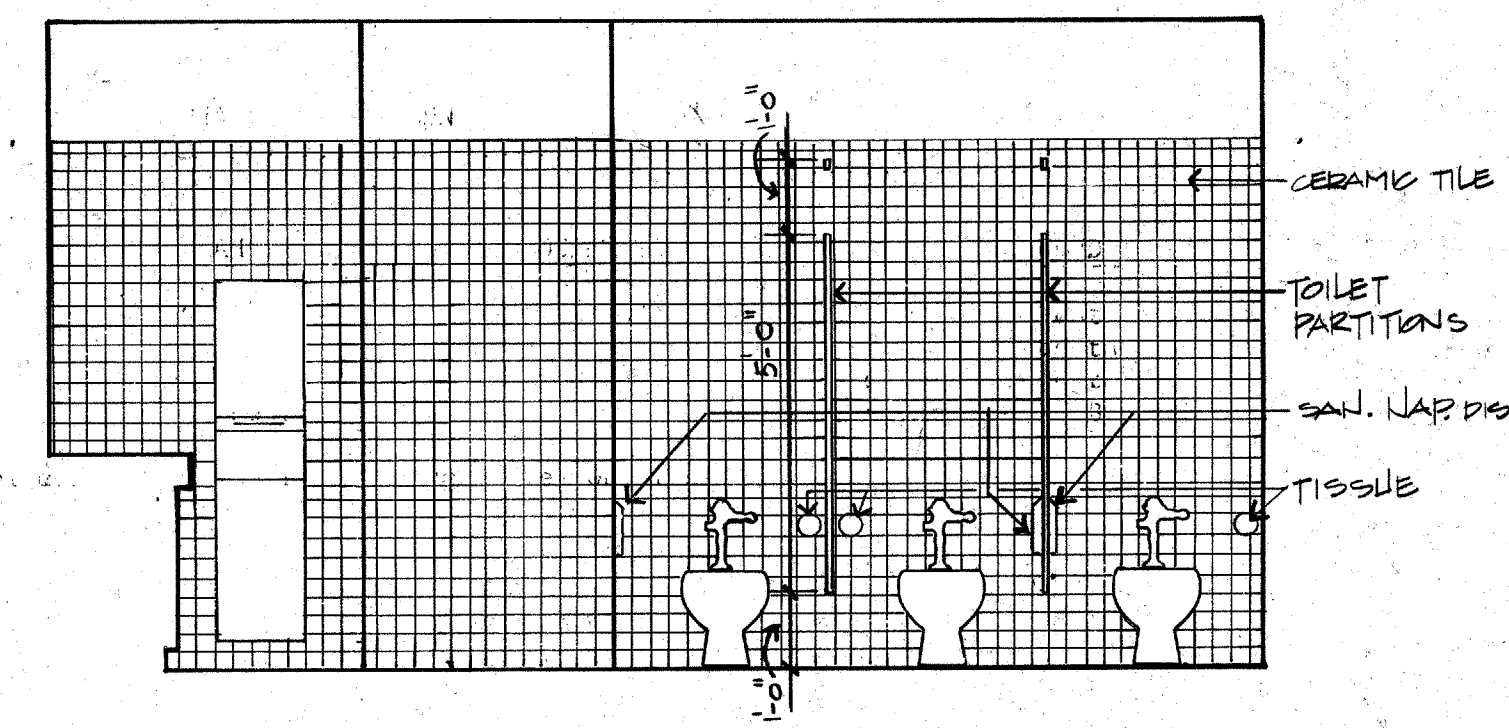
14 RM. 147 (TYP.)
A 5.4 3/8" = 1'-0"



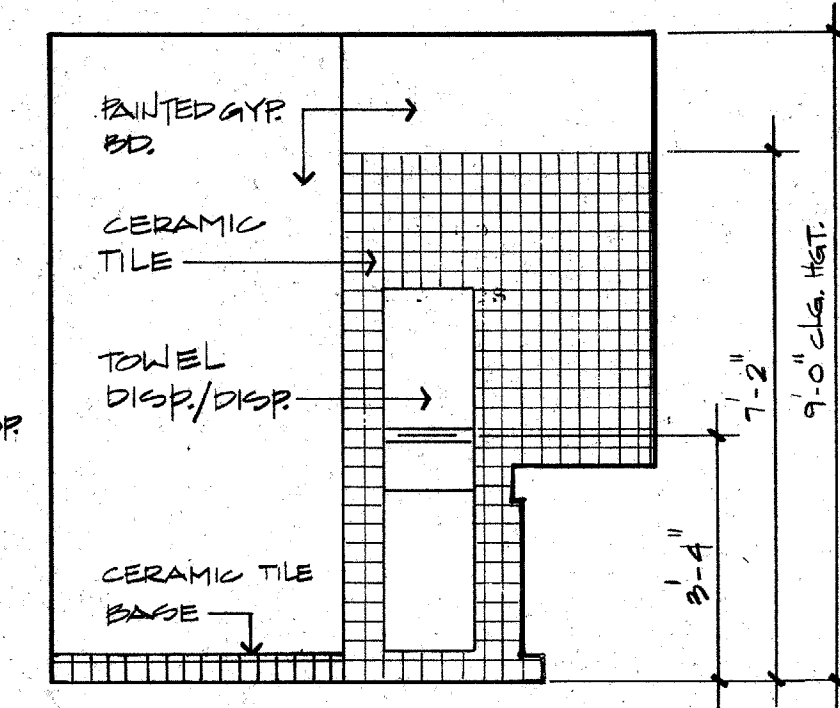
11 RM. 149
A 5.4 3/8" = 1'-0"



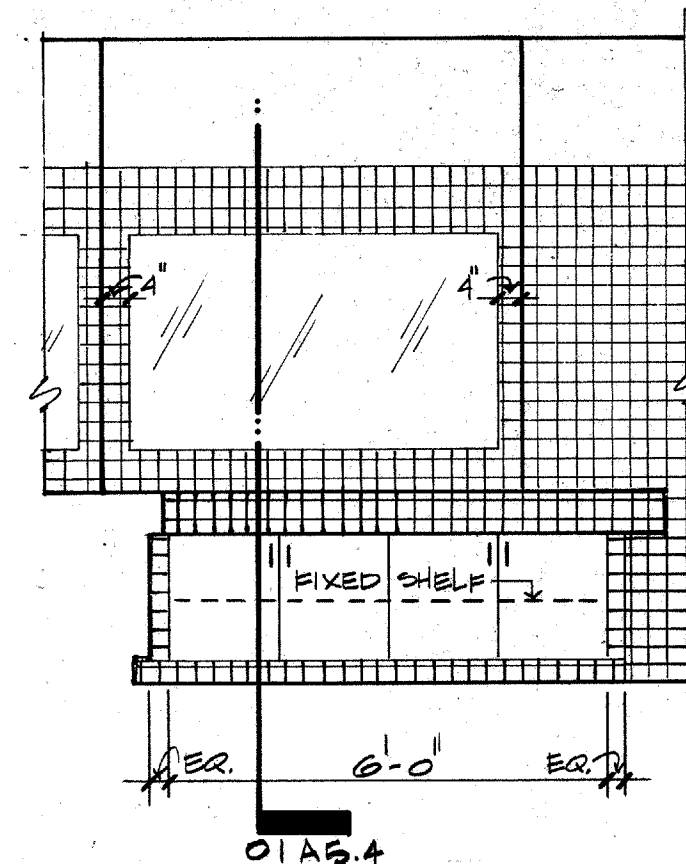
09 RM. 149
A 5.4 3/8" = 1'-0"



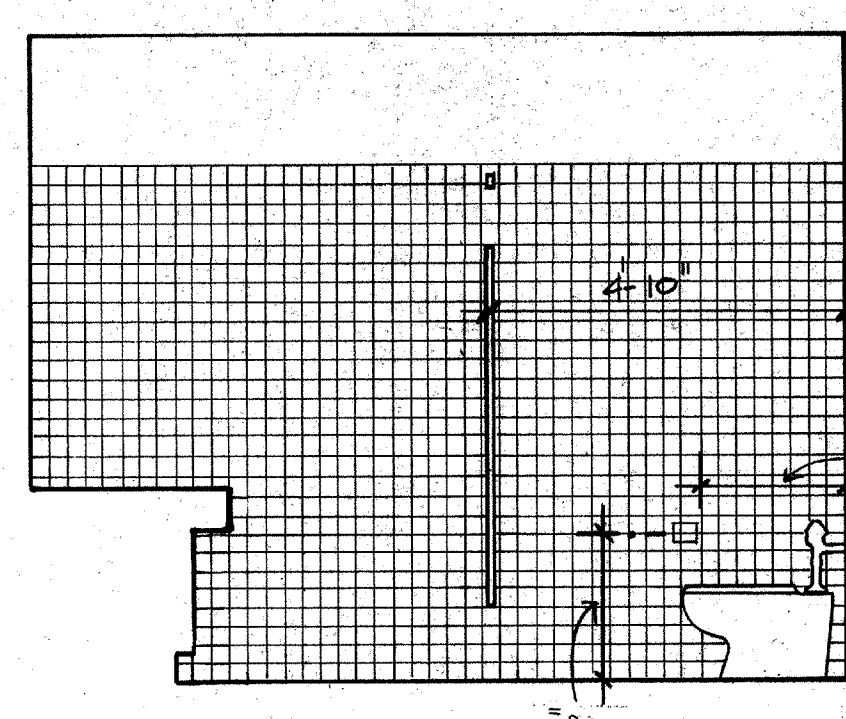
06 149 (150 SIM.)
A 5.4 3/8" = 1'-0"



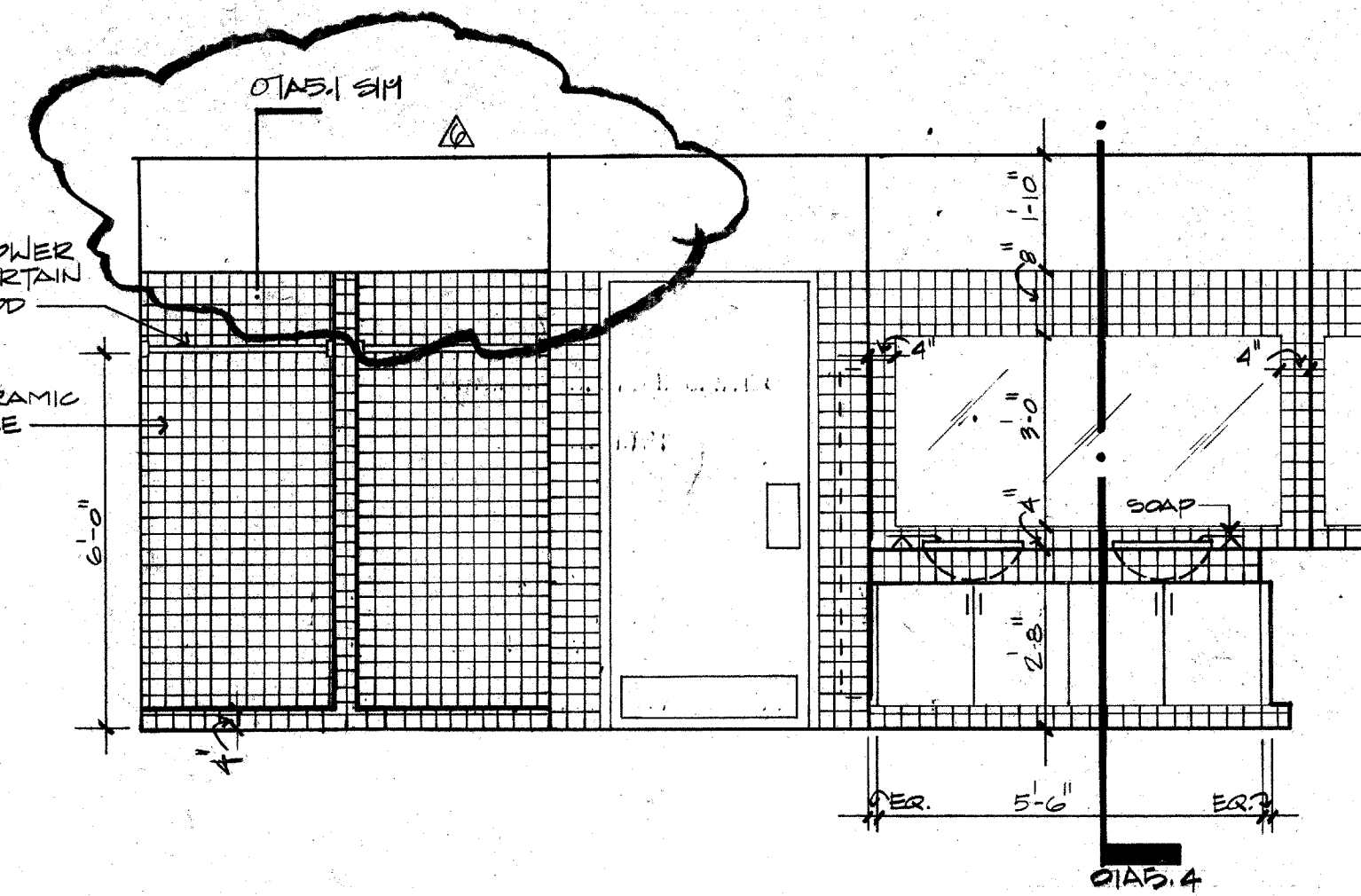
03 RM. 148
A 5.4 3/8" = 1'-0"



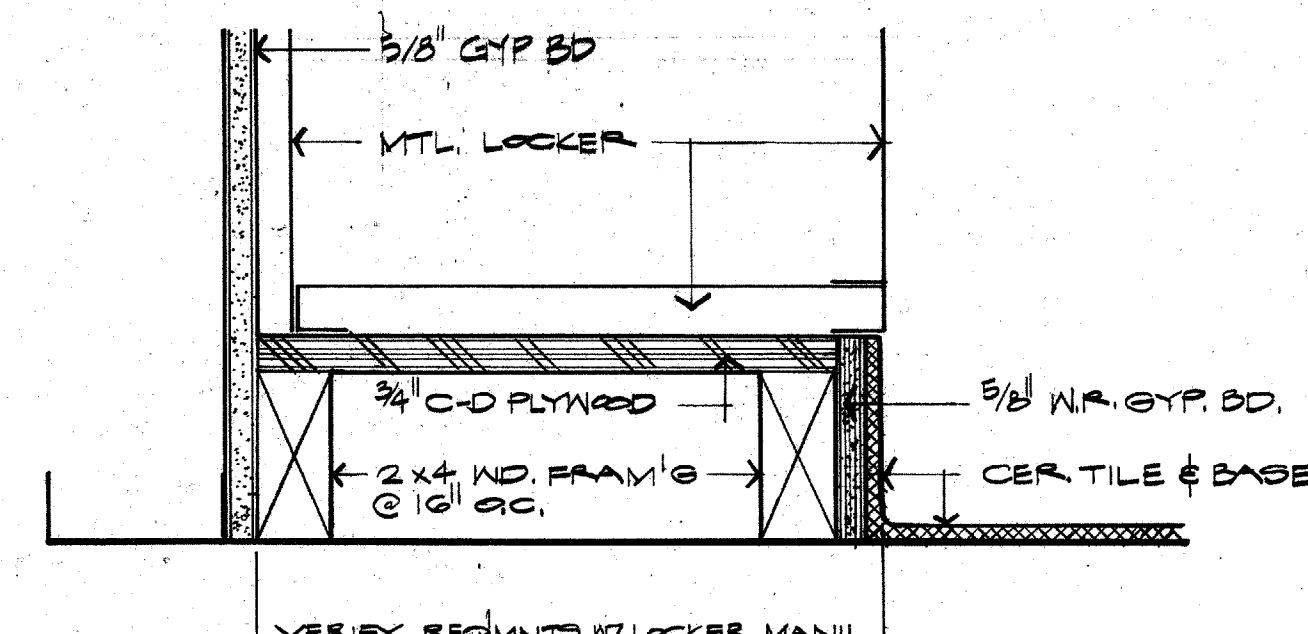
10 RM. 150
A 5.4 3/8" = 1'-0"



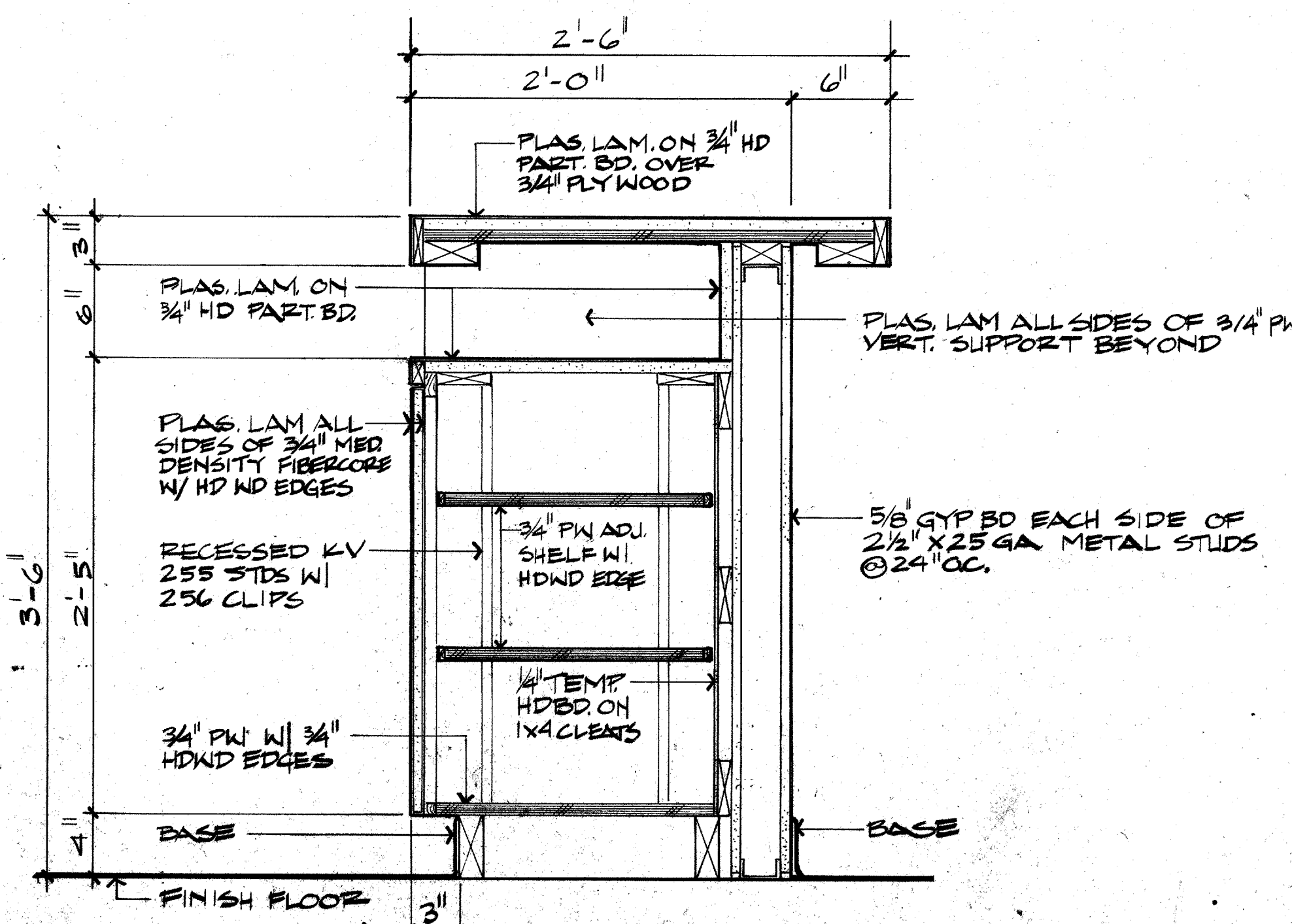
08 RM. 150
A 5.4 3/8" = 1'-0"



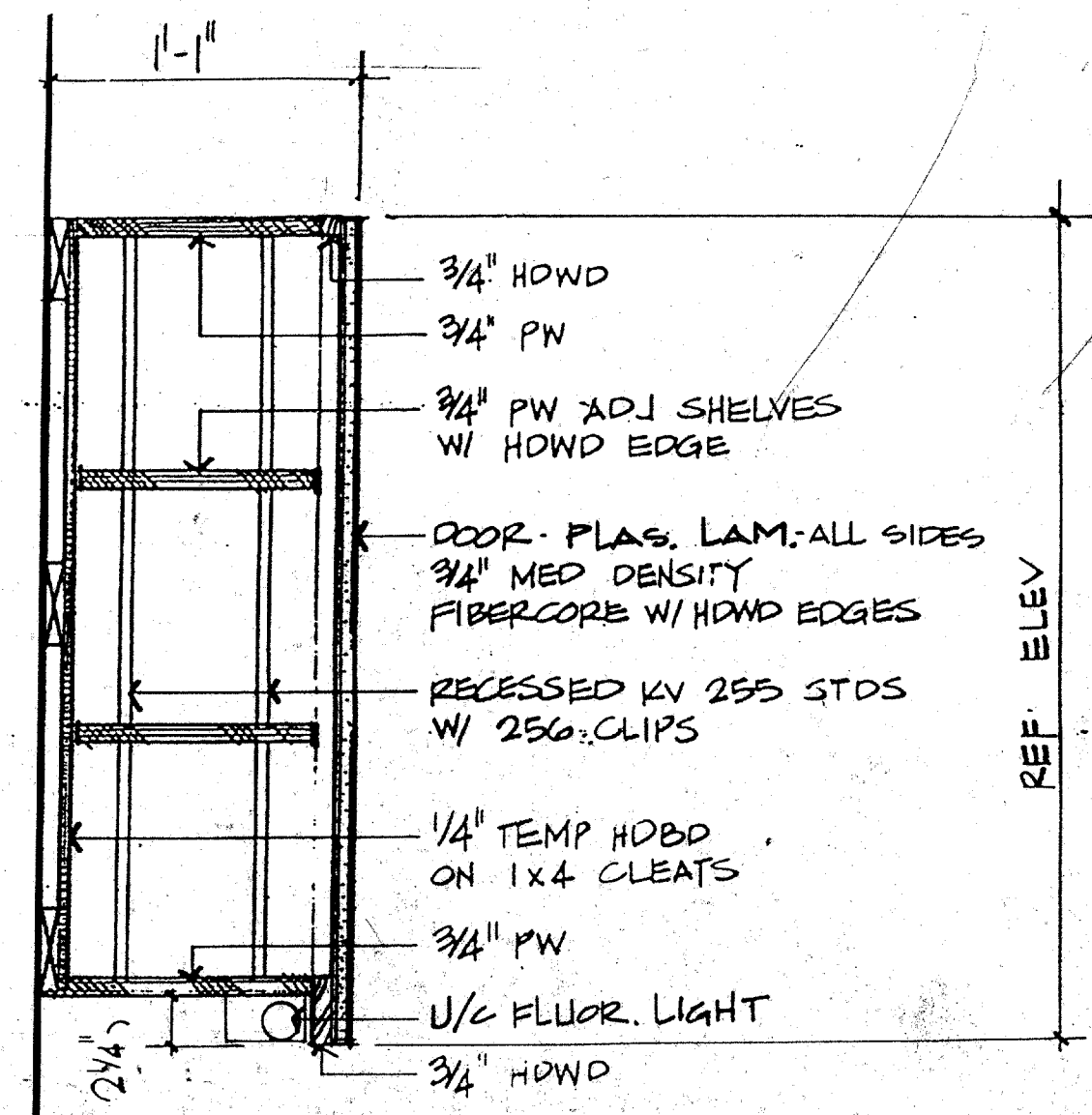
05 RM. 150
A 5.4 3/8" = 1'-0"



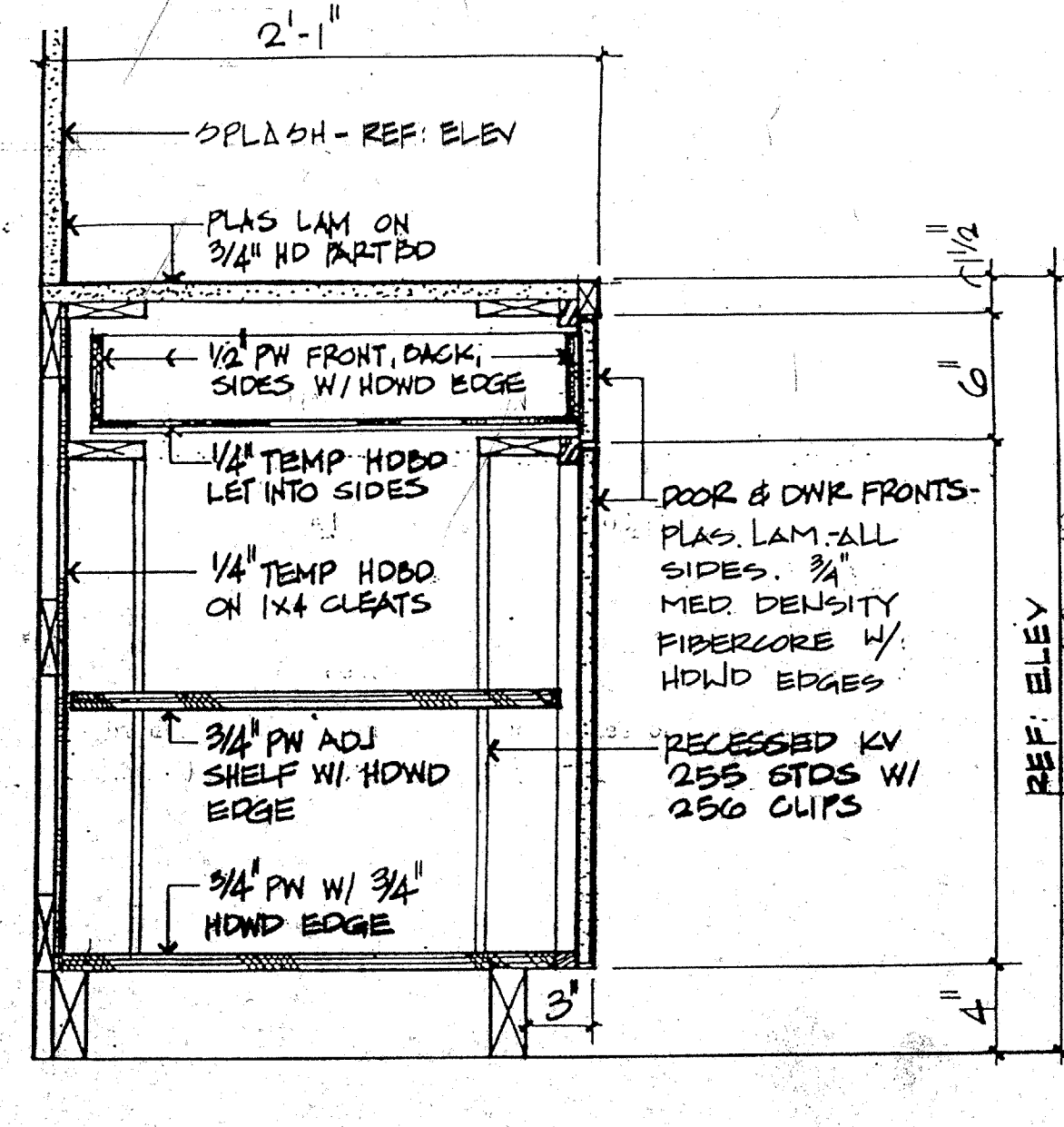
02 BASE DETAIL
A 5.4 3/8" = 1'-0"



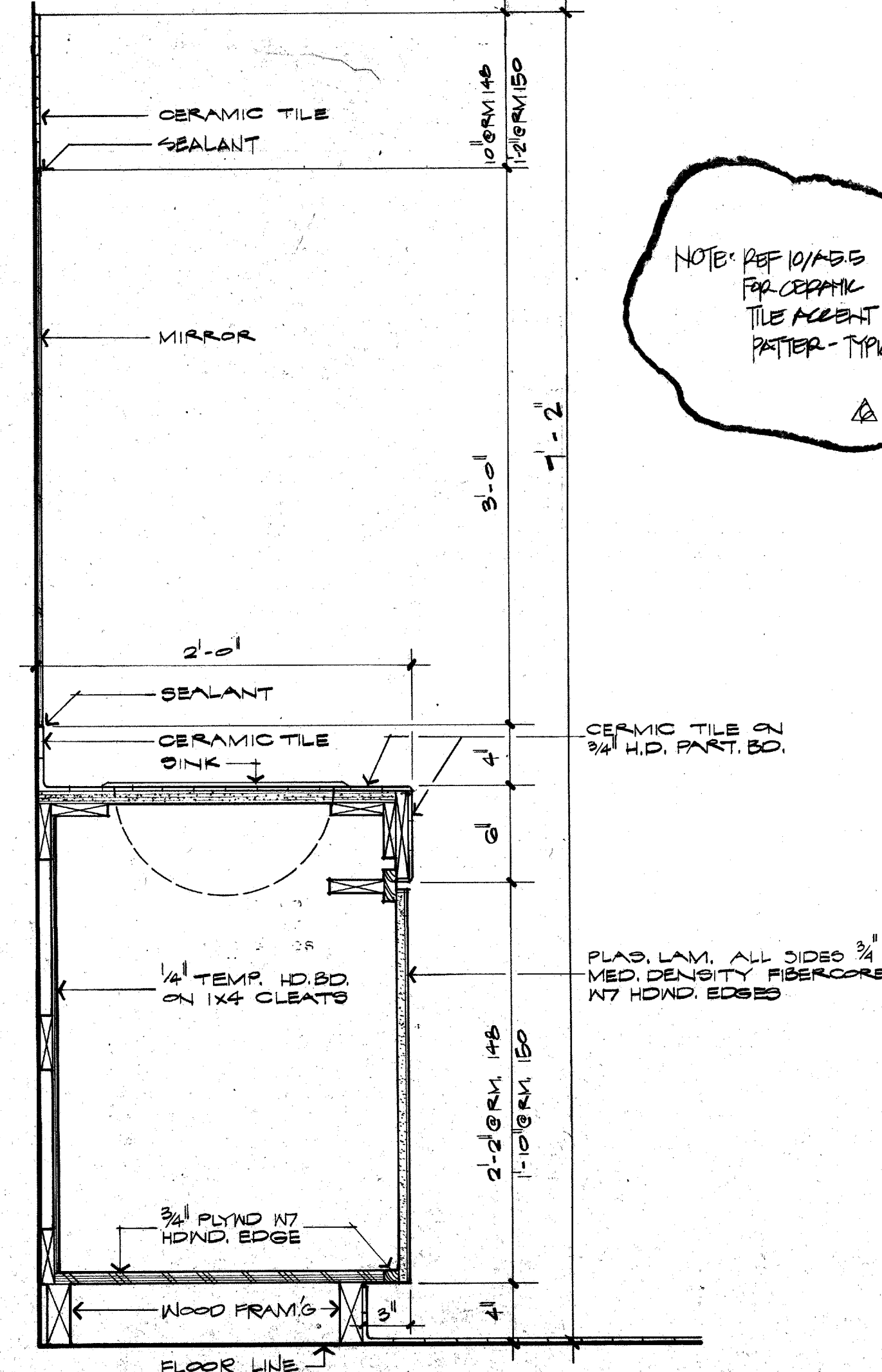
12 SECTION
A 5.4 1 1/2" = 1'-0"



07 SECTION
A 5.4 1 1/2" = 1'-0"



04 SECTION
A 5.4 1 1/2" = 1'-0"



01 CABINET SECTION
A 5.4 1 1/2" = 1'-0"

NOTE: REF TO ASS FOR CERAMIC TILE ACCENT PATTERN - TYPICAL

EDITION ARCHITECTS, INC.
ARCHITECTURE PLANNING ENGINEERING INTERIOR DESIGN
AMERICAN BANK TOWER
SUITE 300
DALLAS, TEXAS 75201
512 / 469-8308

TOWN OF ADDISON

ADDITION TO PUBLIC WORKS SERVICE CENTER
Westgrove Road
Addison Texas

DATE: 5-16-86
11 JUNE 86
24 JULY 1986 - BID
REV 47 10.02.86

SHEET NO. PROPERTY OF LANDSCAPE DEVELOPMENT TOWN OF ADDISON
104
OF SHEETS
JOB NO: 851-137