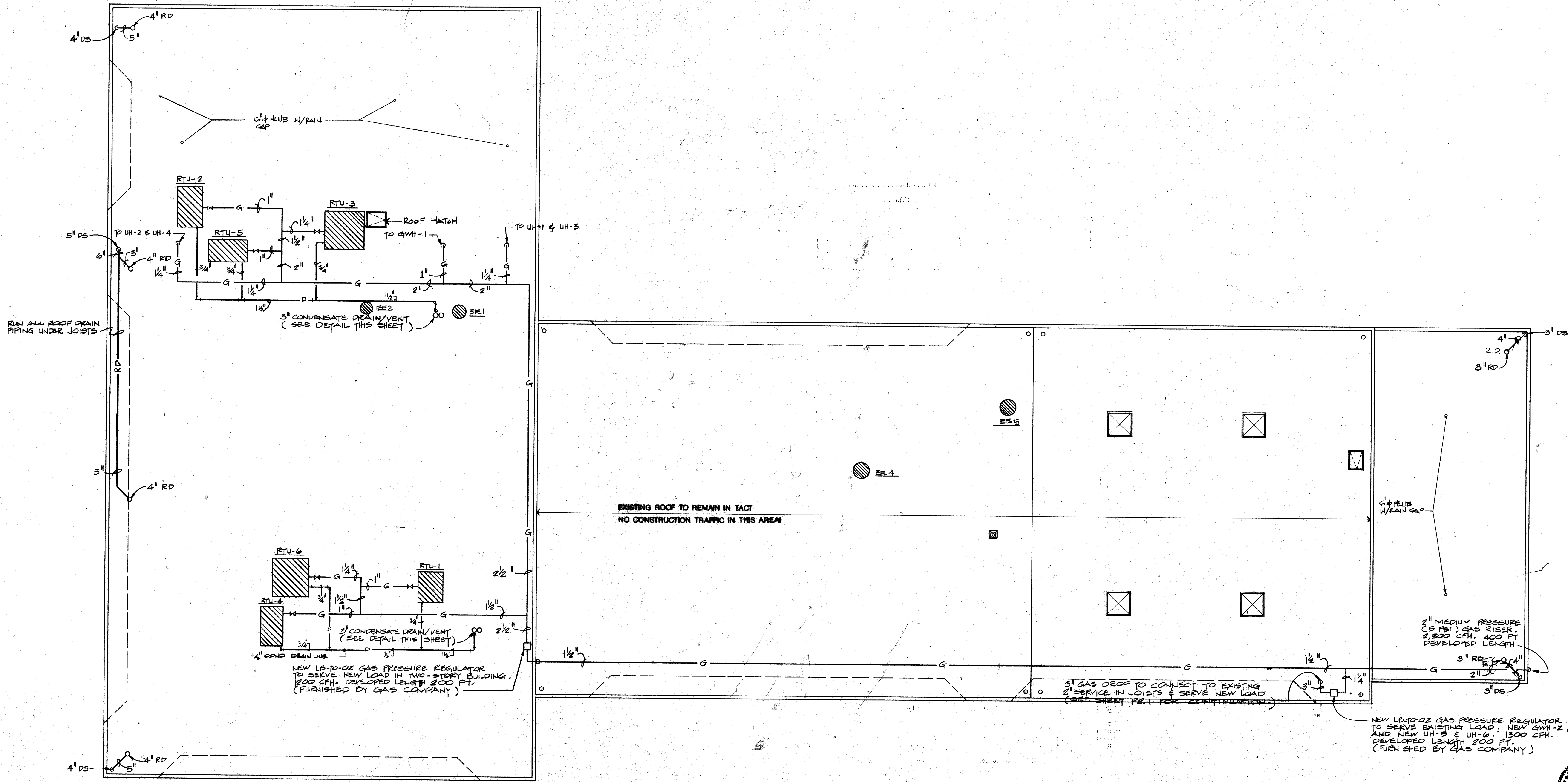


**CONDENSATE DRAIN DETAIL**

02  
M2.3

NTS



**01 ROOF PLAN - MECHANICAL/PLUMBING**

M2.3

**INTERFIELD ENGINEERING CO.**  
CONSULTING ENGINEERS  
5401 N. CENTRAL EXPWY.  
SUITE 340  
DALLAS, TEXAS 75205  
(214) 828-8854



DATE:  
11 JUNE 86  
24 JULY 1988 - BID  
Rev'd 10.07.86

SHEET NO. OF TOWN DIV. PROJECT  
**M2.3**  
OF SHEETS  
JOB NO: 851-137

**ADDITION TO  
PUBLIC WORKS SERVICE CENTER**  
Westgrove Road  
Addison Texas

TOWN OF  
**ADDITION**

**EDI ARCHITECTS, INC.**  
ARCHITECTURE PLANNING ENGINEERING INTERIOR DESIGN  
8435 W. WINDMILL LANE  
SUITE 100  
DALLAS, TEXAS 75201  
AUSTIN, TEXAS 78701  
512 / 469-1845  
512 / 750-1845

