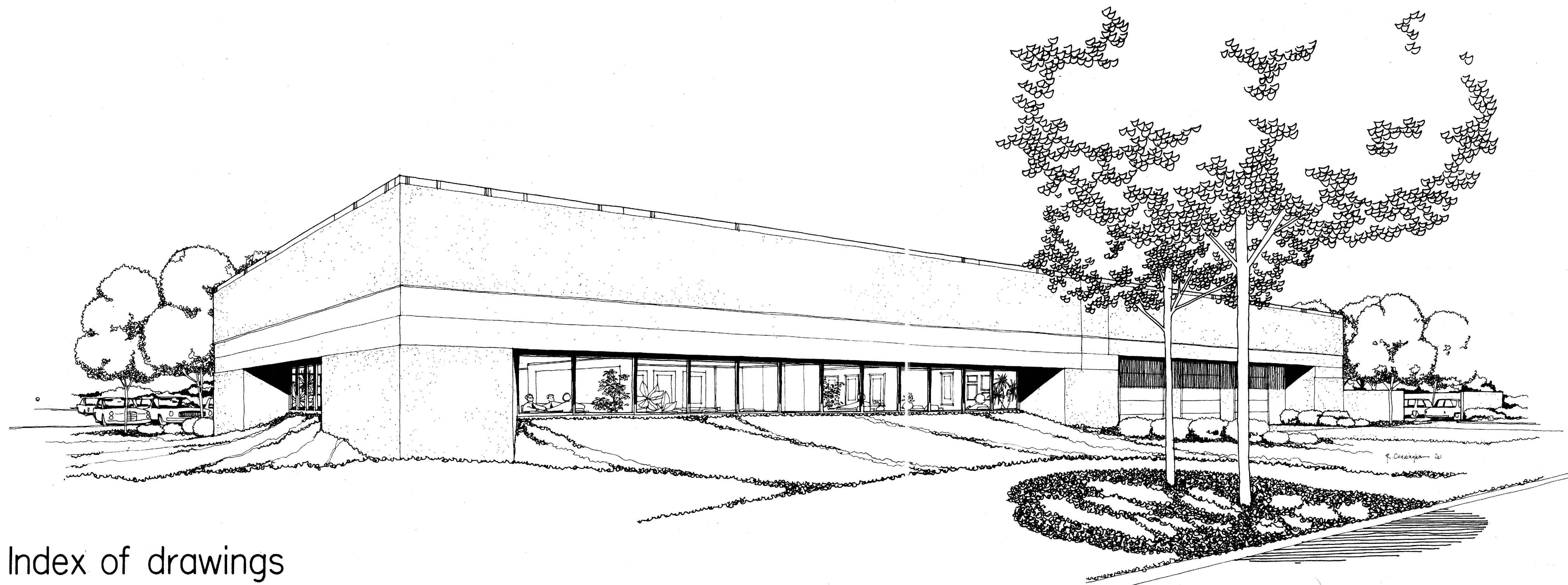


City of Addison PUBLIC WORKS SERVICE CENTER



Index of drawings

Architectural

- 1 Site plan
- 2 Grading plan
- 3 Site details
- 4 Floor plan / Door schedule
- 5 Elevations
- 6 Wall sections
- 7 Building details
- 8 Interior details
- 9 Roof plan
- 10 Ceiling plan / Finish schedule

Structural

- S-1 Foundation plan
- S-2 Framing plan
- S-3 Foundation details
- S-4 Framing details

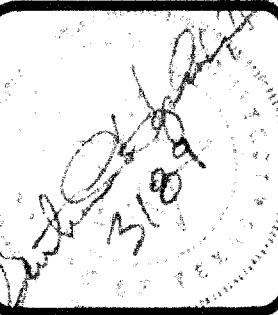
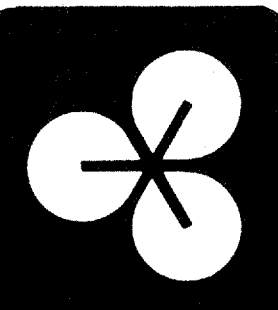
Mechanical / Electrical

- ME-1 Mechanical / Electrical site plan
- M-2 Mechanical floor plan
- E-2 Electrical floor plan

ARCHITECTS: EDI / Cape Hopkins Clement, Inc.
Two Northpark East 120
Dallas, Texas 75231

STRUCTURAL ENGINEERS: Jerry Kassaw Consulting Engineers
South S.E. Loop 323
Tyler, Texas 75701

MECHANICAL ENGINEERS: Diversified Designers & Consultants, Inc.
5430 Red Field
Dallas, Texas 75235



EDI CAPE HOPKINS CLEMENT, INC.
PLANNING · ARCHITECTURE · INTERIOR DESIGN
TWO NORTHPARK EAST, 120 · DALLAS · 75231 · 214 / 750-1945
AMERICAN INSTITUTE OF ARCHITECTS · AMER. SOC. CONSULTING PLANNERS

City of Addison
PUBLIC WORKS SERVICE CENTER
Dooley Road
Addison Texas

ISSUE DATE	REVISIONS
JUNE 2, 1980	

